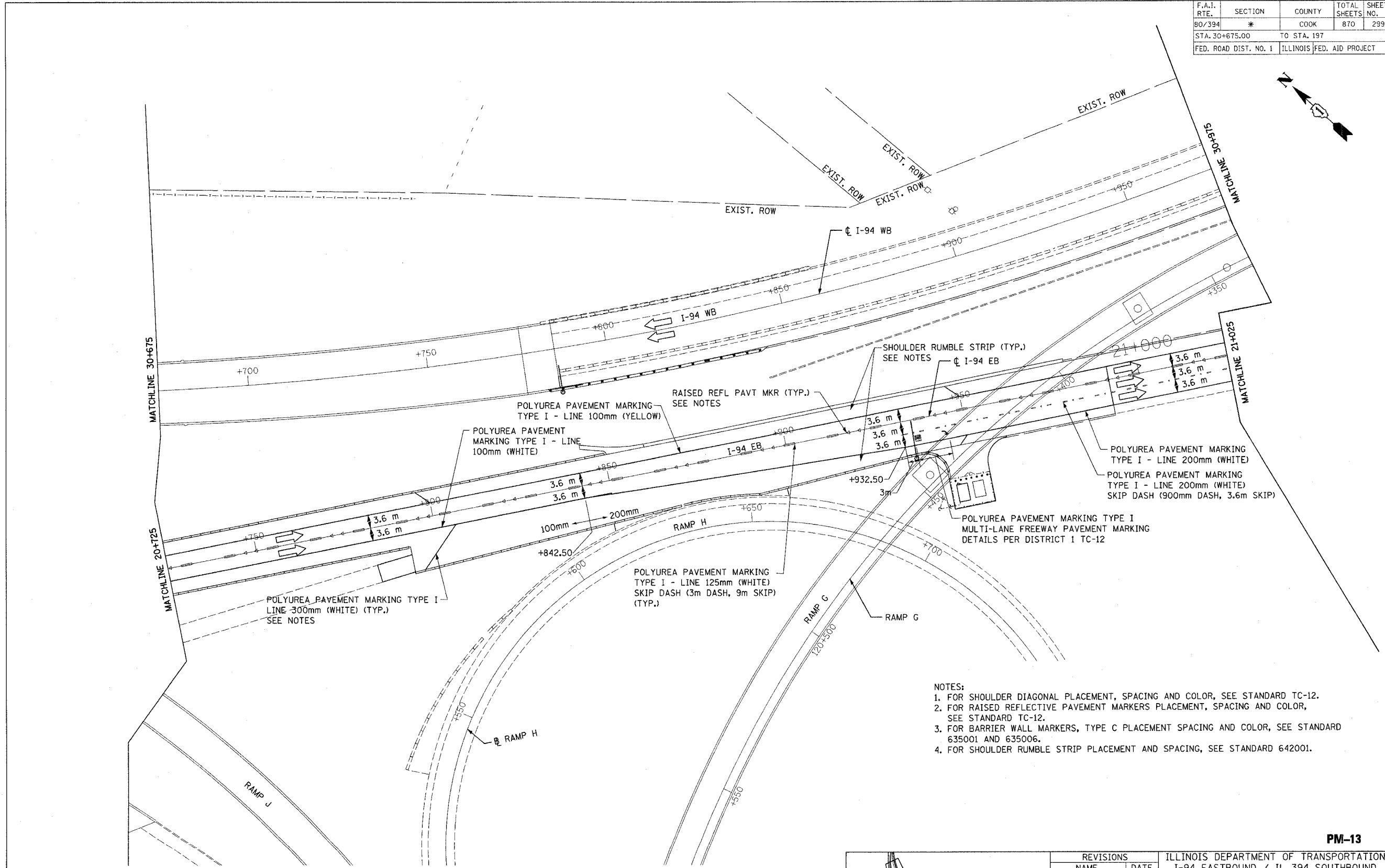
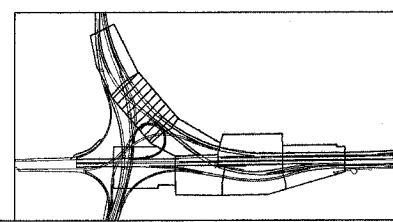


* (0203.1 & 0312-708W) R-3		CONTRACT #62108	
F.A.I. RTE.	SECTION	COUNTY	TOTAL SHEETS
80/394	*	COOK	870
STA. 30+675.00		TO STA. 197	
FED. ROAD DIST. NO. 1		ILLINOIS FED. AID PROJECT	



- NOTES:
1. FOR SHOULDER DIAGONAL PLACEMENT, SPACING AND COLOR, SEE STANDARD TC-12.
 2. FOR RAISED REFLECTIVE PAVEMENT MARKERS PLACEMENT, SPACING AND COLOR, SEE STANDARD TC-12.
 3. FOR BARRIER WALL MARKERS, TYPE C PLACEMENT SPACING AND COLOR, SEE STANDARD 635001 AND 635006.
 4. FOR SHOULDER RUMBLE STRIP PLACEMENT AND SPACING, SEE STANDARD 642001.

PM-13



REVISIONS	
NAME	DATE

ILLINOIS DEPARTMENT OF TRANSPORTATION
I-94 EASTBOUND / IL 394 SOUTHBOUND

PAVEMENT MARKING PLAN
IL-94 EB

DATE: JULY 18, 2005

DRAWN BY: CTT
CHECKED BY: RCH

McDonough Associates Inc.
Engineers / Architects