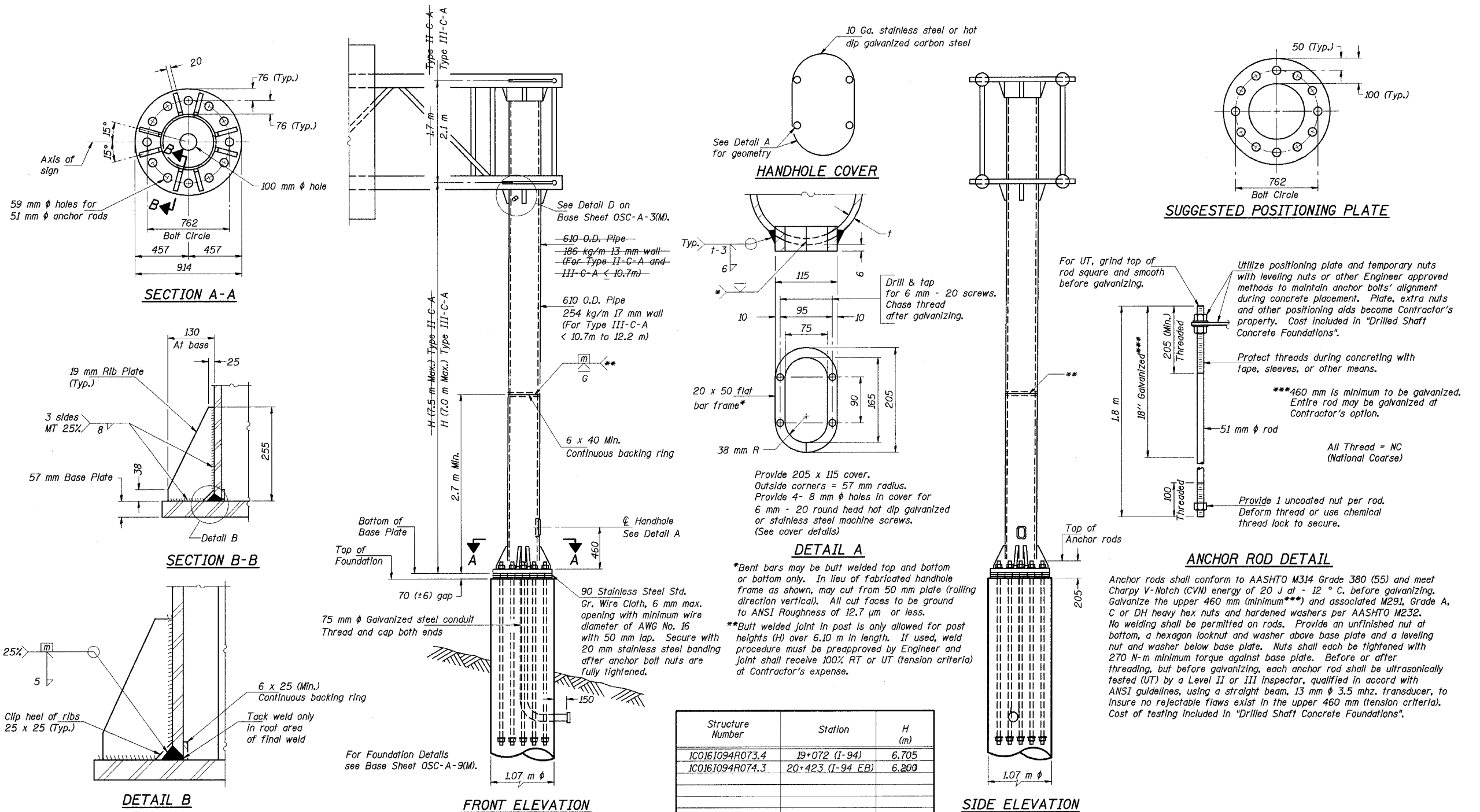


STATE OF ILLINOIS
DEPARTMENT OF TRANSPORTATION

ROUTE NO.	SECTION	COUNTY	TOTAL SHEETS	SHEET NO.
F. A. I. 80/94		COOK	870	330
FED. ROAD DIST. NO. 1		ILLINOIS	FED. AID PROJECT	
(0203.1 & 0312-708) R3		CONTRACT NO. 62108		



Structure Number	Station	H (m)
1C0161094R073.4	19+072 (I-94)	6.705
1C0161094R074.3	20+423 (I-94 EB)	6.200

NUMBER	REVISION	DATE

DESIGNED	PY
CHECKED	DD
DRAWN	LK
CHECKED	DD

OSC-A-5(M) 11/1/2002

J:\Beauchamp
E:\34562\CADD\B1\Signa\Contract\1\cda\190264a.dgn
08-JUL-2005 15:32

ILLINOIS DEPARTMENT OF TRANSPORTATION
I-80/94/US 6 (KINGERY EXPRESSWAY)

CANTILEVER SIGN STRUCTURES
TYPE II-C-A & III-C-A
TRUSS SUPPORT POST

DATE: JUL 18, 2005
SCALE ---

HNTB