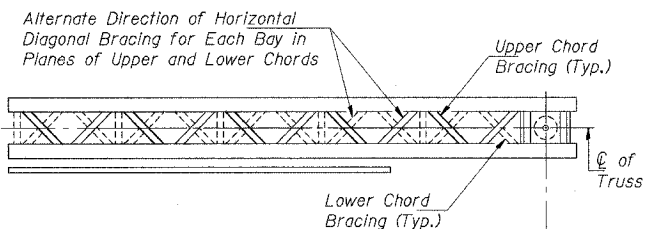
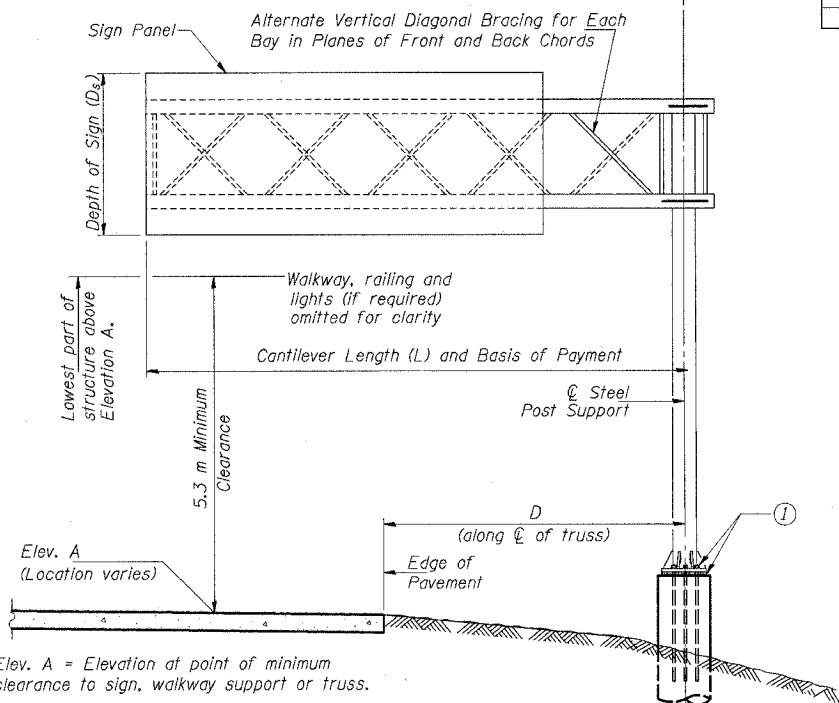


F.A.I. RTE.	SECTION	COUNTY	TOTAL SHEETS	SHEET NO.
80/94		COOK	870	335
STA.		TO STA.		
FED. ROAD DIST. NO. 1		ILLINOIS FED. AID PROJECT		
(0203.1 & 0312-708W)		R-3 CONTRACT # 62108		



**TYPICAL PLAN**  
(Walkway not shown)

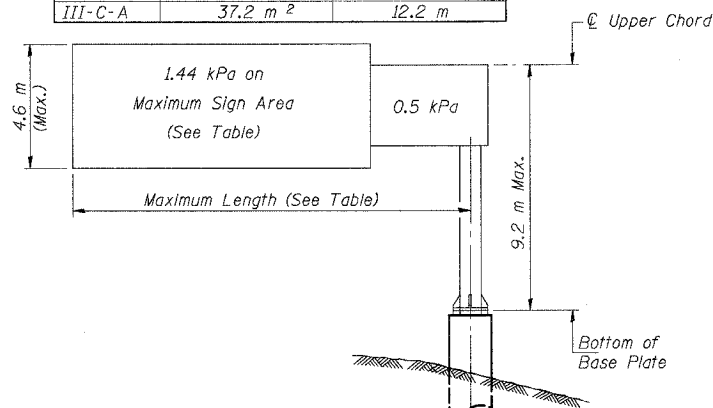


**TYPICAL ELEVATION**  
Looking in Direction of Traffic

Sign support structures may be subject to damaging vibrations and oscillations when sign panels are not in place during erection or maintenance of the structure. To avoid these vibrations and oscillations, consideration should be given to attaching temporary blank sign panels to the structure.

Structure Number	Station	Design Truss Type	Cantilever Length (L)	Elev. A	Dim. D	D <sub>s</sub>	Total Sign Area
IC0161094L074.2	30+786	II-C-A	8.044	189.107	4.334	2.380	7.664
IC0161094R074.3	20+935	II-C-A	8.260	185.829	3.900	3.990	20.429

Truss Type	Maximum Sign Area	Maximum Length
I-C-A	15.8 m <sup>2</sup>	7.6 m
II-C-A	31.6 m <sup>2</sup>	9.2 m
III-C-A	37.2 m <sup>2</sup>	12.2 m



**DESIGN WIND LOADING DIAGRAM**

Parameters shown are basis for I.D.O.T. Standards. Installations not within dimensional limits shown require special analysis for all components.

① After adjustments to level truss and insure adequate vertical clearance, all top and leveling nuts shall be tightened against the base plate with a minimum torque of 270 N·m. Stainless steel mesh shall then be placed around the perimeter of the base plate. Secure to base plate with stainless steel banding.

Note: Trusses shall be shipped individually with adequate provision to prevent detrimental motion during transport. This may require ropes between horizontals and diagonals or energy dissipating (elastic) ties to the vehicle. The contractor is responsible for maintaining the configuration and protection of the trusses.

**GENERAL NOTES**

DESIGN: AASHTO Standard Specifications for Structural Supports for Highway Signs, Luminaires and Traffic Signals. ("AASHTO Specifications")

MEASUREMENTS: All dimensions are in millimeters (mm) except as noted.

CONSTRUCTION: Current (at time of letting) Illinois Department of Transportation Standard Specifications for Road and Bridge Construction, Supplemental Specifications and Special Provisions. ("Standard Specifications")

LOADING: 145 km/h WIND VELOCITY

WIND LOADING: 1.44 kPa normal to Sign Panel Area and truss elements not behind sign Loading Diagram.

WALKWAY LOADING: Dead load plus 2.2 kN concentrated live load.

DESIGN STRESSES:

FIELD UNITS  
f'c = 24 MPa  
fy = 400 MPa (reinforcement)

WELDING: All welds to be continuous unless otherwise shown. All welding to be done in accordance with current AWS D1.1 and D1.2 Structural Welding Codes (Steel and Aluminum) and the Standard Specifications.

MATERIALS: Aluminum Alloys as shown throughout plans. All Structural Steel Pipe shall be ASTM A53 Grade B with a minimum yield of 241 MPa, or A500 Grade B or C with a minimum yield of 319 MPa. If A500 pipe is substituted for A53, then the outside diameter shall be as detailed and wall thickness greater than or equal to A53. All Structural Steel Plates and Shapes shall conform to AASHTO M270M Gr. 250, Gr. 345 or Gr. 345W\*. Stainless steel for shims, sleeves and handhole covers shall be ASTM A240, Type 302 or 304, or another alloy suitable for exterior exposure and acceptable to the Engineer. The steel pipe and stiffening ribs at the base plate for the column shall have a minimum longitudinal Charpy V-Notch (CVN) energy of 20 J. at 4° C. (Zone 2) before galvanizing.

FASTENERS FOR ALUMINUM TRUSSES: All bolts noted as "high strength" (HS) must satisfy the requirements of AASTO M164 (ASTM A325), or approved alternate, and must have matching lock nuts. Threaded studs for splices (if members interfere) must satisfy the requirements of ASTM A449, ASTM A193M, Grade B7, or approved alternate, and must have matching lock nuts. Bolts and lock nuts not required to be high strength must satisfy the requirements of ASTM A307. All bolts and lock nuts must be hot dip galvanized per AASHTO M232. The lock nuts must have nylon or steel inserts. A stainless steel flat washer conforming to ASTM A240, Type 302 or 304, is required under both head and nut or under both nuts where threaded studs are used. High strength bolt installation shall conform to Article 505.04(f) of the IDOT Standard Specifications for Road and Bridge Construction. Rotational capacity ("ROCAP") testing of bolts will not be required.

U-BOLTS AND EYEBOLTS: U-Bolts and Eyebolts must be produced from ASTM A276 Type 304, 304L, 316 or 316L, condition A, cold finished stainless steel, or an equivalent material acceptable to the Engineer. All nuts for U-Bolts and Eyebolts must be lock nuts equivalent to ASTM A307 with nylon or steel inserts, and hot dip galvanized per AASHTO M232. A stainless steel flat washer conforming to ASTM A240, Type 302 or 304, is required under each U-Bolt and Eyebolt lock nut.

STEEL PIPE: DN indicates nominal diameter.

GALVANIZING: All Steel Grating, Plates, Shapes and Pipe shall be Hot Dip Galvanized after fabrication in accordance with AASHTO M111. Painting is not permitted.

ANCHOR RODS: Shall conform to AASHTO M314 Gr. 250 or 380 (36 or 55) with a minimum Charpy V-Notch (CVN) energy of 20 J at 5° C.

CONCRETE SURFACES: All concrete surfaces above an elevation 150 mm below the lowest final ground line at each foundation shall be cleaned and coated with Bridge Seal Sealer in accordance with the Standard Specifications.

REINFORCEMENT BARS: Reinforcement Bars designated (E) shall be epoxy coated in accordance with the Standard Specifications.

\*If M270M Gr. 345W steel is proposed, chemistry for plate to be used shall first be approved by the Engineer as suitable for galvanizing and welding.

NUMBER	REVISION	DATE

**TOTAL BILL OF MATERIAL**

ITEM	UNIT	TOTAL
OVERHEAD SIGN STRUCTURE CANTILEVER TYPE I-C-A	m	
OVERHEAD SIGN STRUCTURE CANTILEVER TYPE II-C-A	m	16.304
OVERHEAD SIGN STRUCTURE CANTILEVER TYPE III-C-A	m	
OVERHEAD SIGN WALKWAY-CANTILEVER TYPE A	m	9.270
DRILLED SHAFT CONCRETE FOUNDATIONS	m <sup>3</sup>	17.50

**CANTILEVER SIGN STRUCTURES  
GENERAL PLAN & ELEVATION  
ALUMINUM TRUSS & STEEL POST**

REVISIONS		ILLINOIS DEPARTMENT OF TRANSPORTATION F.A.I. ROUTE 80/94 (INTERSTATE 80/294) OVERHEAD SIGN STRUCTURES I-94 WB & I-94 EB COOK COUNTY SECTION (0203.1 & 0312.708W) R-3
NAME	DATE	
DESIGNED BY	DRAWN BY	 ENGINEERS / ARCHITECTS
DATE: March 1, 2005	CHECKED BY	