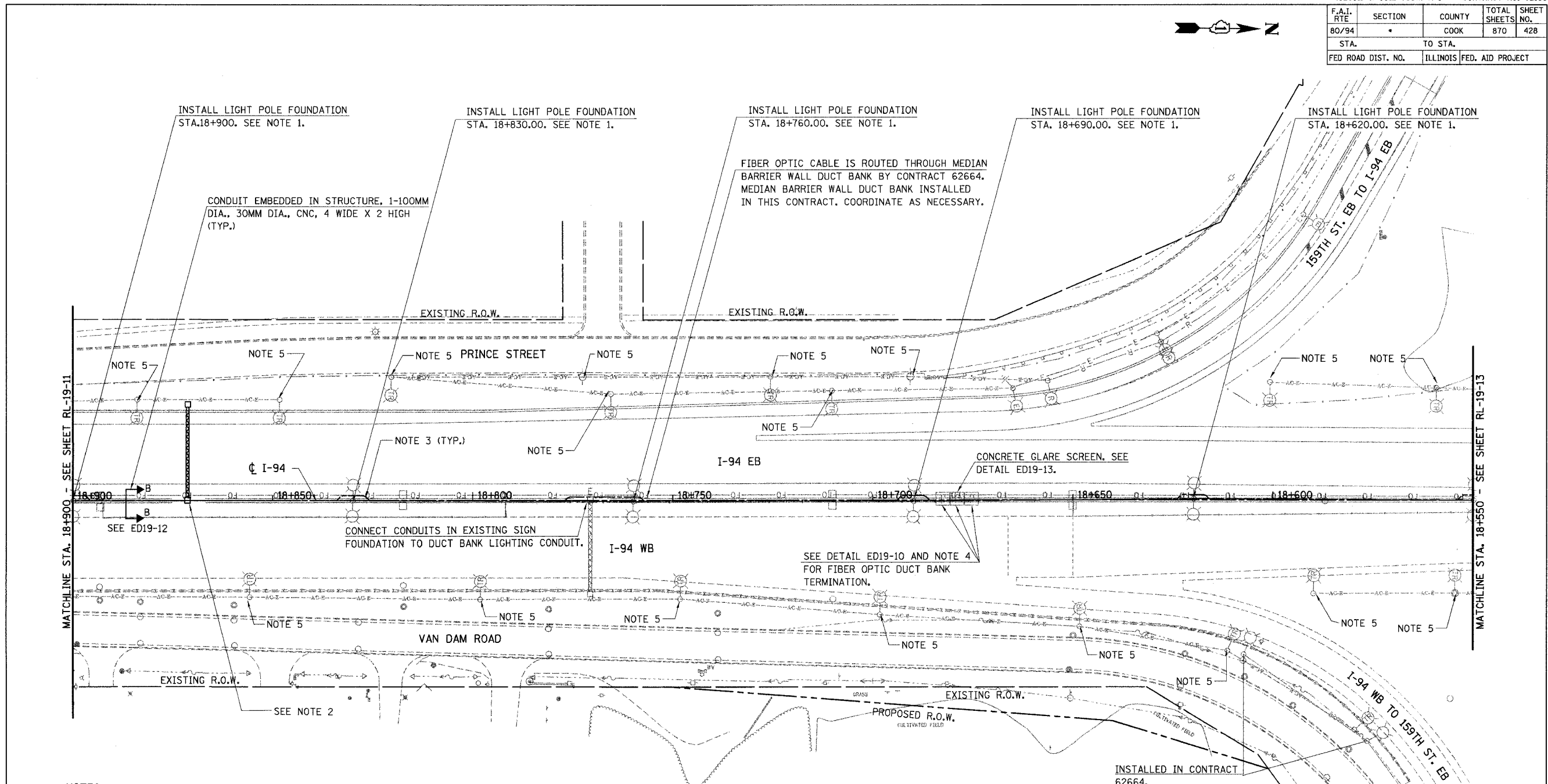
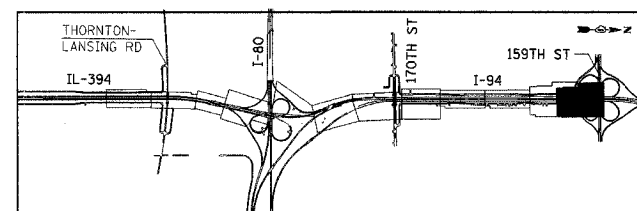


F.A.I. RTE	SECTION	COUNTY	TOTAL SHEETS	SHEET NO.
80/94	*	COOK	870	428
STA.		TO STA.		
FED ROAD DIST. NO.		ILLINOIS FED. AID PROJECT		



NOTES:

1. INSTALL FOUNDATION, CONDUITS, AND ANCHOR BOLTS FOR LIGHT POLE. CONTRACTOR TO COORDINATE THROUGH IDOT WITH CONTRACT 62664 TO OBTAIN ANCHOR BOLTS & ASSURE PROPER INSTALLATION. LIGHT POLE IS INSTALLED IN CONTRACT 62664. CONDUITS INSTALLED IN FOUNDATION SHALL BE 100MM DIA. RGS CONDUIT. SEE ED19-8.
2. SEE OVERHEAD SIGN STRUCTURE DRAWINGS FOR CONDUIT IN FOUNDATION DETAILS. INSTALL 2-100MM DIA. RGC CONDUITS IN FOUNDATION LOCATED IN MEDIAN. ORIENT STUB OUTS NORTH AND SOUTH SO THEY ARE PARALLEL WITH THE MEDIAN. ELECTRIC CABLE FEEDING SIGN AND LUMINAIRES FOR SIGN ARE INSTALLED IN CONTRACT 62664.
3. ROUTE 30MM DIA. CNC DUCT BANK AROUND LIGHT POLE FOUNDATION. THIS WILL BE PAID FOR AS "CONDUIT ENCASED, REINFORCED CONCRETE, 30MM DIA. CNC, 4 WIDE X 2 HIGH". LIGHTING CONDUIT IS ATTACHED TO CONDUIT IN LIGHT POLE FOUNDATION. SEE CONDUIT ROUTING DETAIL ED19-11.
4. INSTALL CONDUITS AND ALL NECESSARY STUB OUTS FOR JUNCTION BOXES LOCATED ON TOP OF MEDIAN BARRIER WALL. THERE ARE NO LATERAL CONDUITS BEING INSTALLED UNDER ROADWAY AT THIS LOCATION. THE 100MM CNC AS SHOWN IN DETAIL ED19-9 DOES NOT NEED TO BE INSTALLED. THE JUNCTION BOXES ARE INSTALLED UNDER CONTRACT 62664. COORDINATE AS NECESSARY.
5. THIS ITEM IS INSTALLED AND REMOVED DURING CONTRACT 62108 WITH CONCURRENT WORK UNDER CONSTRUCTION BY CONTRACT 62664.
6. ALL PVC ENCASED OR EMBEDDED IN CONCRETE WILL BE PVC SCHEDULE 40. (TYP.)



REVISIONS	
NAME	DATE

RL19-12

ILLINOIS DEPARTMENT OF TRANSPORTATION
I-94 EAST BOUND / IL 394 SOUTH BOUND

ROADWAY CONDUIT PLAN
STA. 18+550 TO STA. 18+900

HORIZ SCALE: 1:500
VERT SCALE: 1:500
DATE: JULY 18, 2005

DRAWN BY: SPR
CHECKED BY: BB

HNTB