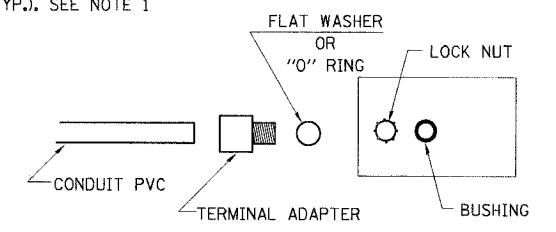
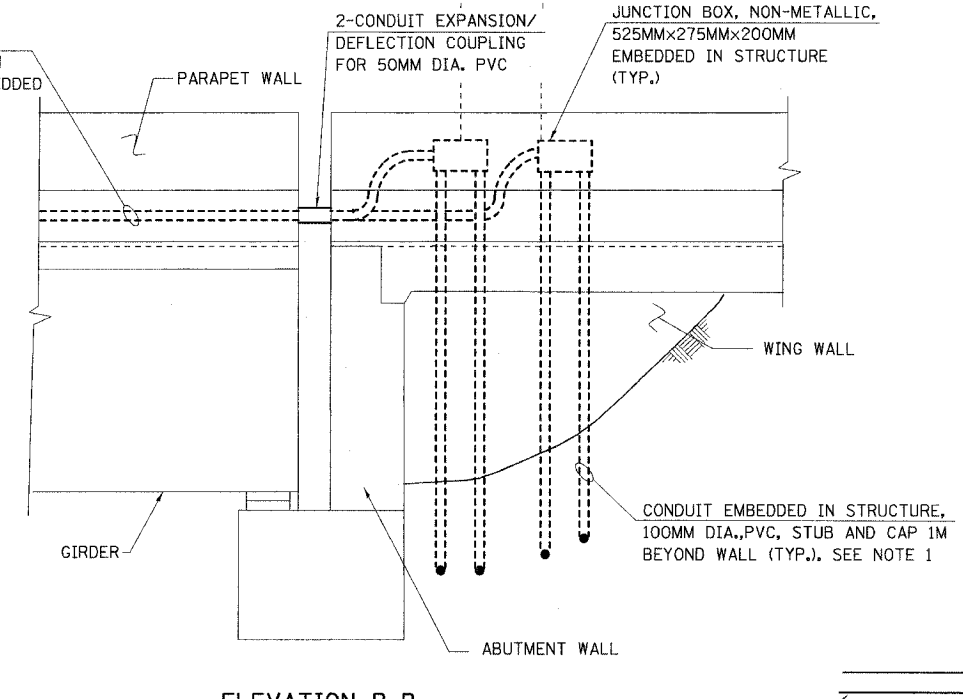
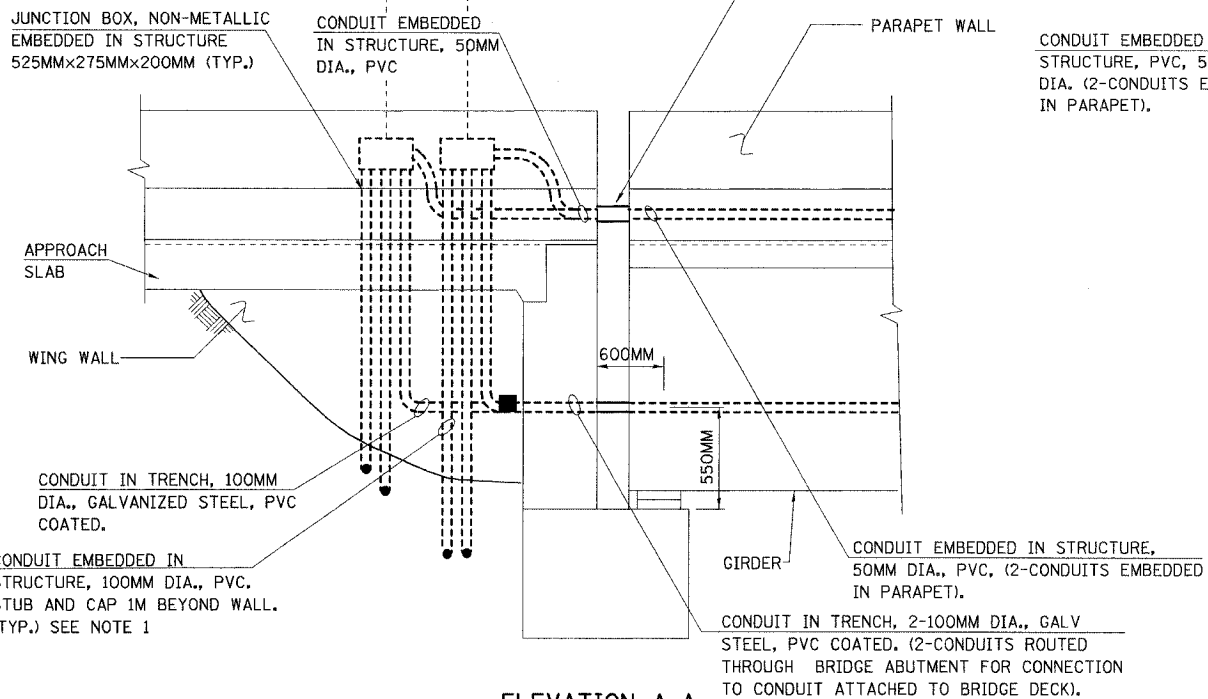
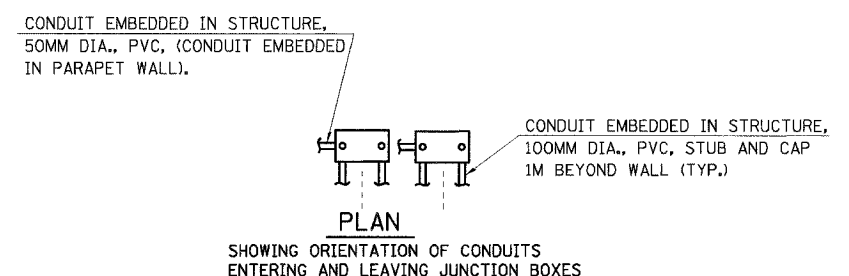
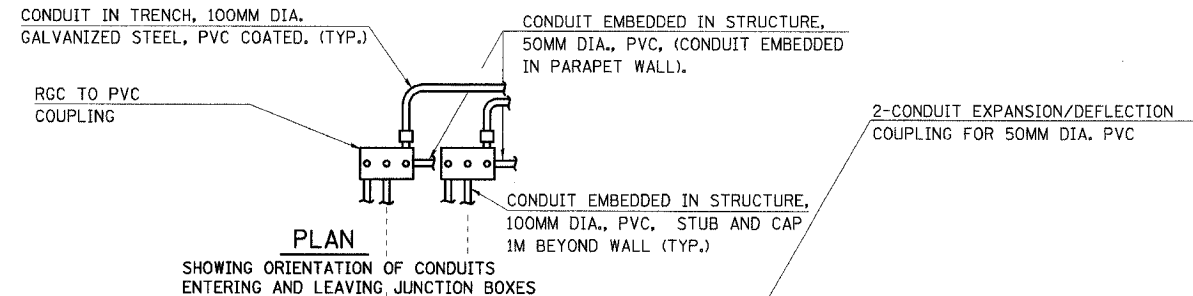


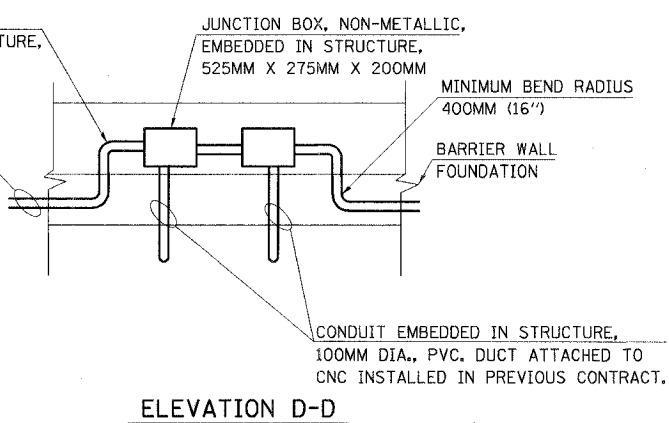
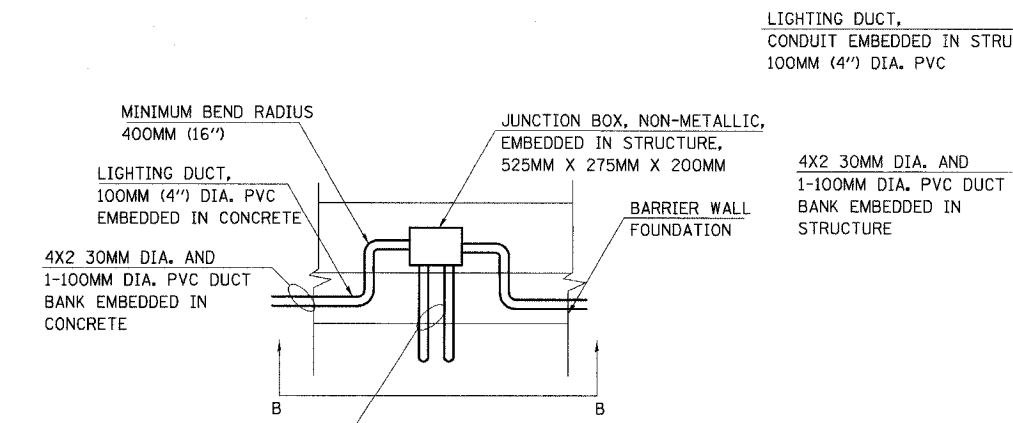
F.A.I. RTE	SECTION	COUNTY	TOTAL SHEETS	SHEET NO.
80/94	*	COOK	870	434
STA.		TO STA.		
FED ROAD DIST. NO.		ILLINOIS FED. AID PROJECT		



**ELEVATION A-A**  
DETAIL A - WINGWALL TO BRIDGE TRANSITION FOR ELECTRICAL CONDUIT

**ELEVATION B-B**  
DETAIL B - PARAPET CONDUIT AND JUNCTION BOXES

TERMINATION TO JB DETAIL.



**ELEVATION C-C**  
DETAIL C - CONDUIT & JUNCTION BOX CONFIGURATION FOR CANTILEVER SIGN JUNCTION BOXES EMBEDDED IN MEDIAN BARRIER WALL

**ELEVATION D-D**  
DETAIL D - CONDUIT AND JUNCTION BOX CONFIGURATION FROM CONTROLLER E TO MEDIAN BARRIER WALL

**NOTES:**

1. ALL STUBBED OUT CONDUIT SHALL BE LOCATED AT A MINIMUM DEPTH OF 1M BELOW FINISHED GRADE.
2. THIS DETAIL SHOWS THE TYPICAL INSTALLATION OF CONDUIT AND JUNCTION BOXES IN WING WALL TRANSITIONING TO CONDUIT THAT IS MOUNTED UNDER BRIDGE DECK OR EMBEDDED IN PARAPET WALL. NUMBER OF CONDUITS MOUNTED UNDER BRIDGE DECK WILL VARY. SEE PLAN VIEWS FOR NUMBER OF CONDUITS MOUNTED UNDER BRIDGE DECK.

REVISIONS	
NAME	DATE

ED19-5

ILLINOIS DEPARTMENT OF TRANSPORTATION  
I-94 EAST BOUND / IL 394 SOUTH BOUND

TYPICAL CONDUIT EMBEDDED IN WINGWALL DETAIL

HORIZ SCALE: NONE  
VERT SCALE: NONE  
DATE: JULY 18, 2005

DRAWN BY: SPR  
CHECKED BY: BB

**HNTB**