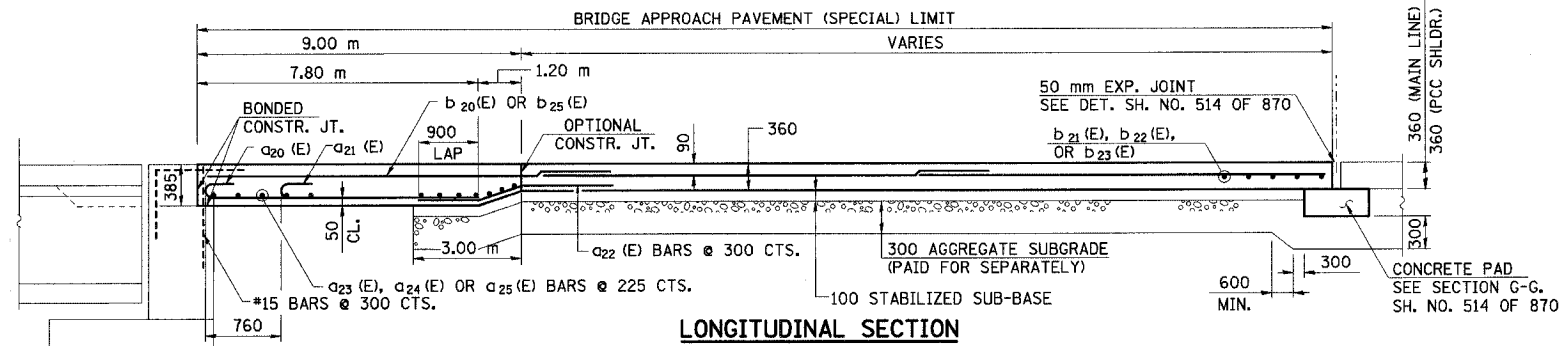
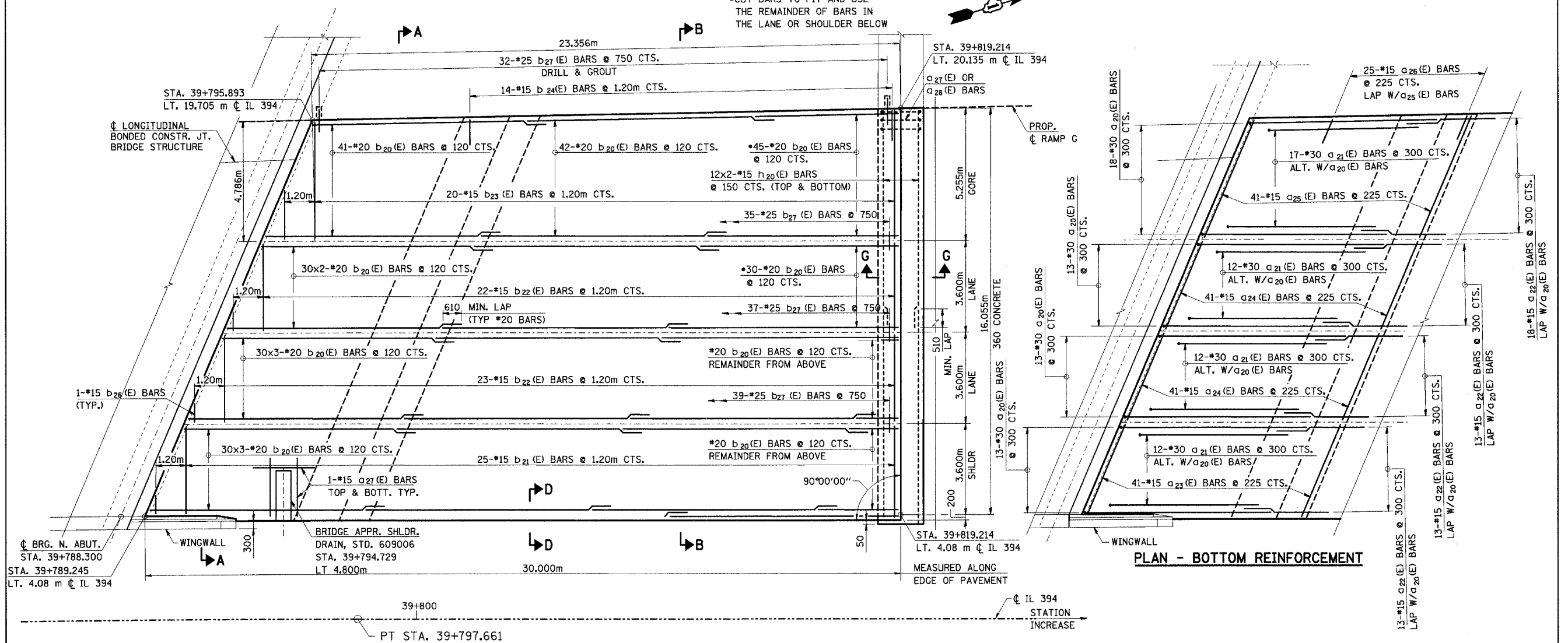


FAL RTE	SECTION	COUNTY	TOTAL SHEETS	SHEET NO.
80/94	•	COOK	870	513
STA.		TO STA.		
FED ROAD DIST. NO.		ILLINOIS FED. AID PROJECT		



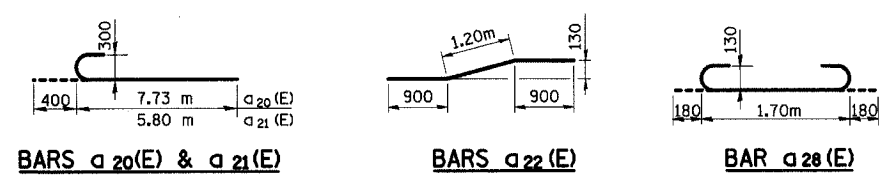
LONGITUDINAL SECTION

• CUT BARS TO FIT AND USE THE REMAINDER OF BARS IN THE LANE OR SHOULDER BELOW



PLAN - TOP REINFORCEMENT

PLAN - BOTTOM REINFORCEMENT



NOTES:

1. WORK THIS SHEET WITH SHEET NO. 514 OF 870.
2. BARS INDICATED THUS "12x2-#15 ETC." INDICATE 12 LINES OF BARS WITH 2 LENGTHS PER LINE.
3. REINFORCEMENT BARS DESIGNATED "(E)" SHALL BE EPOXY COATED.
4. ALL DIMENSIONS ARE IN MILLIMETERS (mm) EXCEPT AS NOTED.

REVISIONS	
NAME	DATE

ILLINOIS DEPARTMENT OF TRANSPORTATION
 I-94 EAST BOUND / IL 394 SOUTH BOUND
BRIDGE APPROACH PAVEMENT (SPECIAL)
SB IL ROUTE 394 OVER
CANADIAN NATIONAL RR
STRUCTURE NO. 016-2798
NORTH APPROACH - 1 OF 2

HORIZ SCALE:
 VERT SCALE:
 DATE: JUL 18, 2005

DRAWN BY: LK
 CHECKED BY: PY

HNTB