

STATE OF ILLINOIS
DEPARTMENT OF TRANSPORTATION

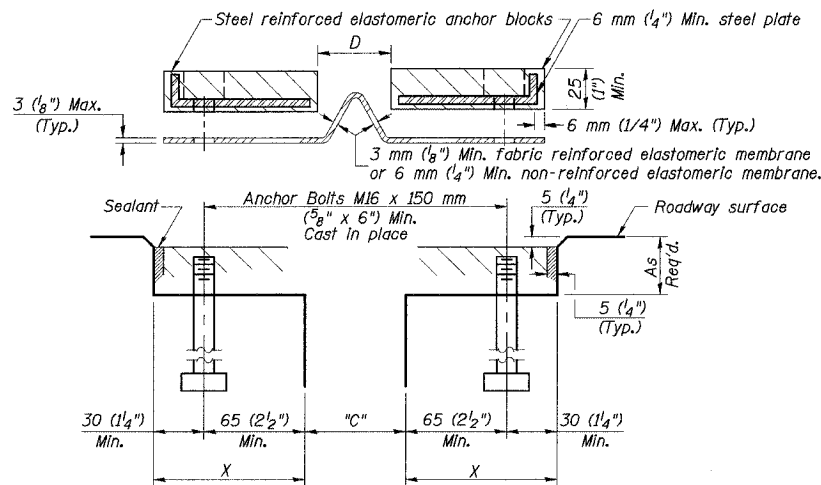
ROUTE NO.	SECTION	COUNTY	TOTAL SHEETS	SHEET NO.	SHEET NO. 34
F. A. I. 80/94	*	COOK	870	548	91 SHEETS
FED. ROAD DIST. NO. 1		ILLINOIS FED. AID PROJECT-			
(0203.1 & 0312-708W) R-3		CONTRACT NO. 62108			

Joint Size	"C" at 10 °C (50 °F)	"D" at 10 °C (50 °F)
100 (4")	75 (3")	65 (2½") Min.

INSTALLATION NOTES

- Install continuous seal in roadway and parapet.
- Install anchor blocks as indicated.

NOTE A: Maximum spacing of anchor bolts shall be 300 (1'-0") centers.



CROSS SECTION

GENERAL NOTES

Continuous Seal Neoprene Expansion Joint shall consist of molded anchor blocks of elastomer and steel, field assembled over continuous lengths of elastomeric membrane.

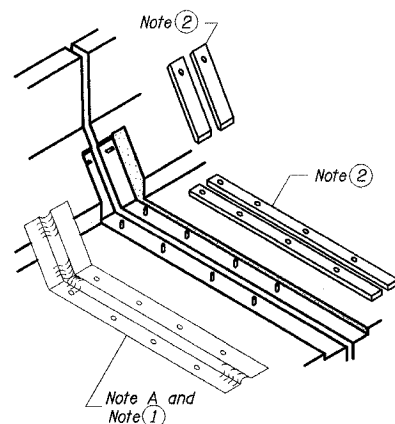
The elastomeric membrane shall be premolded with a single or a double upward convolution that will have a "memory" to return to its molded position upon joint closure.

The convolution length shall be such that the extended length will not be greater than the manufactured length when the joint is fully expanded in its design range and will not protrude above the anchor blocks when the joint is fully compressed.

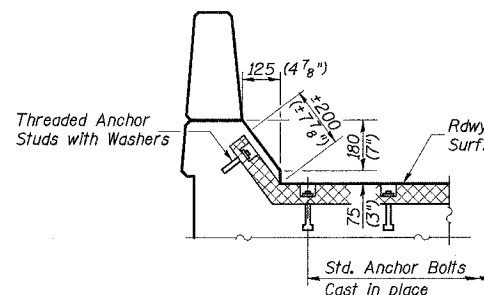
Joint openings shall be adjusted according to Article 503.10(c) of the Standard Specifications when the deck is poured at an ambient temperature other than 10° C (50° F).

The parapet and roadway membrane shall be made continuous by an approved vulcanizing process. Lapping will not be permitted.

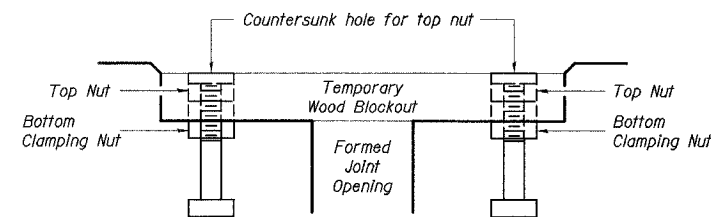
All dimensions are in millimeters (mm) except as noted.



AT PARAPET

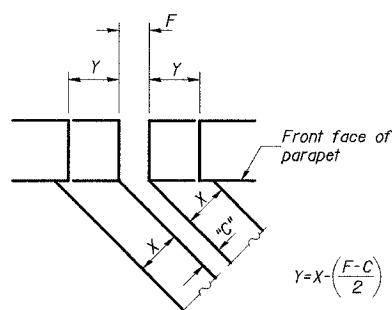


AT PARAPET



Note: Stud needs to be threaded lower to allow for use of clamping nut.

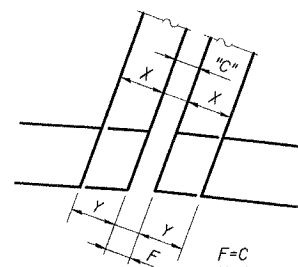
RECOMMENDED BLOCKOUT DETAIL



For dimension "F" see Sheet No. 17, 19, 23, 26, & 29 of 91.

FORMING BLOCKOUT SKETCH

(At all locations except Unit 3 Pier 2 East Parapet)



For dimensions "F" see Sheet No. 26 & 29 of 91.

FORMING BLOCKOUT SKETCH

(At Unit 3 Pier 2 East Parapet)

BILL OF MATERIAL (ISTHA)

ITEM	UNIT	QUANTITY
		Pier 2 (Unit 3)
Bridge Expansion Joint Closure Neoprene Seal and Anchor Blocks 4"	m	10.5

BILL OF MATERIAL (IDOT)

ITEM	UNIT	QUANTITY	
		Pier 2 (Unit 2)	N. Abut.
Neoprene Expansion Joint, 100 mm	m	16.3	20.6

Notes:

- Dimensions in parenthesis are English Units for Neoprene Expansion Joint at Pier 2 Unit 3. Metric Dimensions are for Neoprene Expansion Joint at Pier 2 Unit 2 and N. Abutment.
- Work this Sheet with Sheet No. 17, 19, 23, 26 & 29 of 91.

ILLINOIS DEPARTMENT OF TRANSPORTATION
I-94 EAST BOUND / IL 394 SOUTH BOUND
NEOPRENE EXPANSION JOINT AT PIER 2 & N. ABUTMENT
SB IL ROUTE 394 / RAMP F OVER THORN CREEK
F.A.P. 332 SECTION (0203.1 & 0312-708W) R-3
COOK COUNTY
STA. 440+704.350 STRUCTURE NO. 016-2800/2845
DATE JUL 18, 2005
SCALE ---
HNTB

DESIGNED	JY
CHECKED	TRL
DRAWN	LK
CHECKED	TRL

L:\Kaitis\J\34852\CADD\IB\SN_2800\cadd\CTR_19_2800\cadd\190024a_2800.dgn 18-AUG-2005 12:43