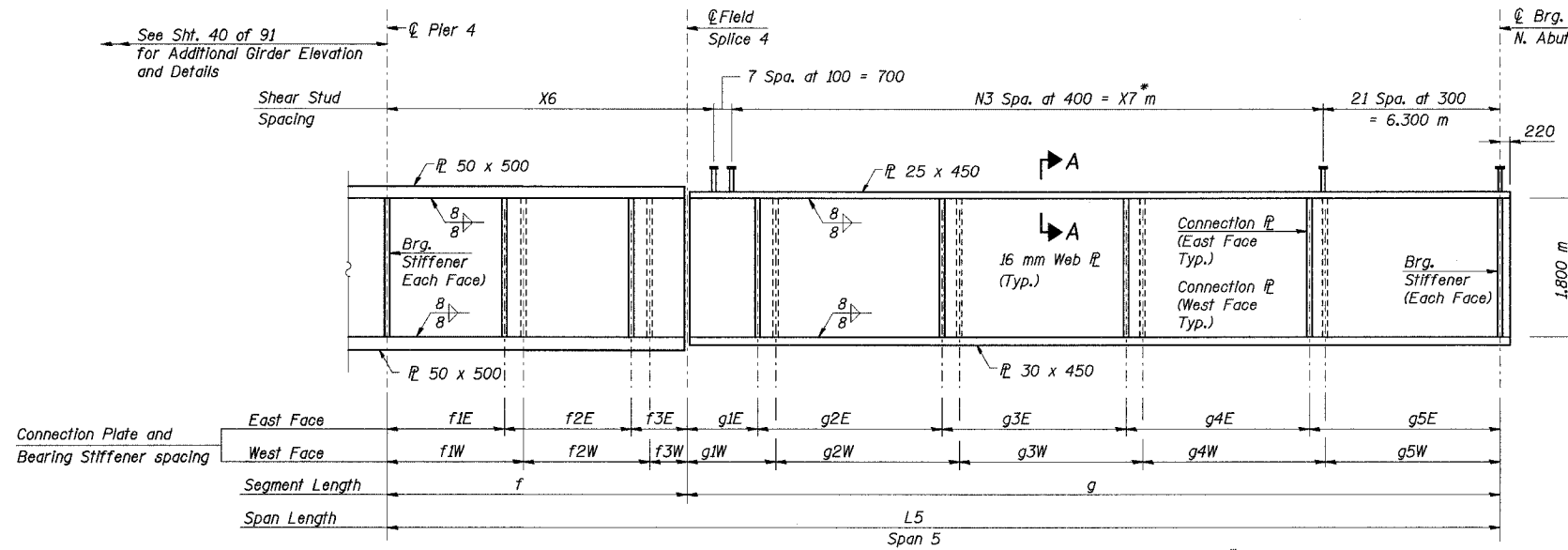


STATE OF ILLINOIS  
DEPARTMENT OF TRANSPORTATION

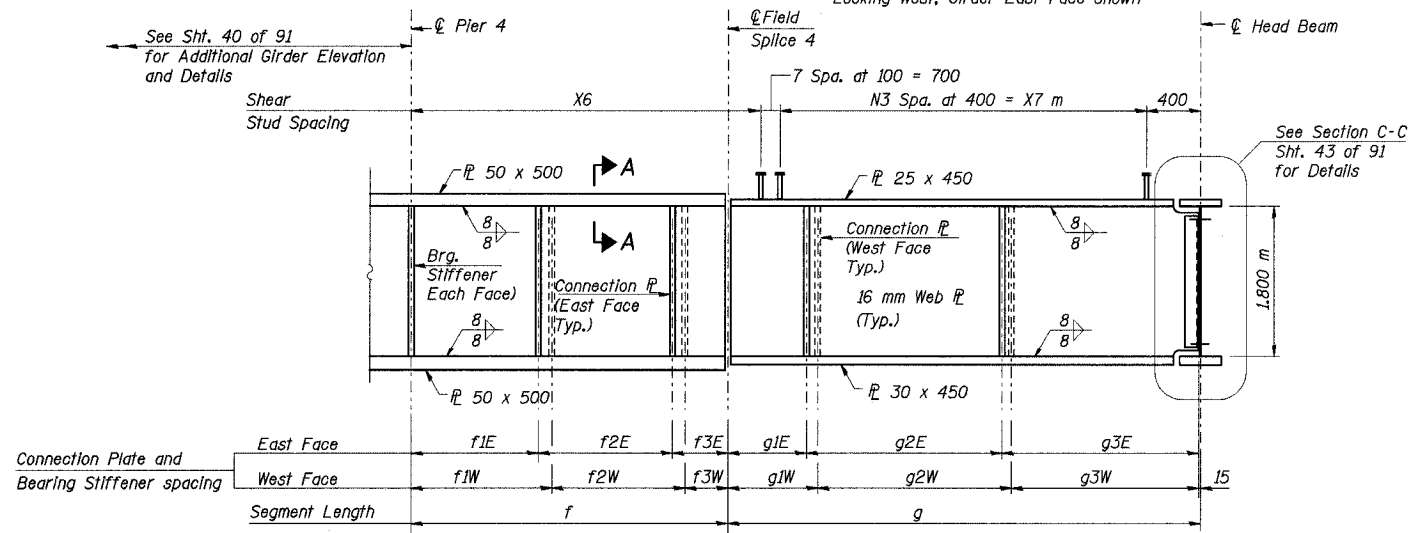
ROUTE NO.	SECTION	COUNTY	TOTAL SHEETS	SHEET NO.	SHEET NO. 42 91 SHEETS
F. A. I. 80/94	*	COOK	870	556	
FED. ROAD DIST. NO. 1		ILLINOIS FED. AID PROJECT-			
02033.1 & 0312-708W R-3		CONTRACT NO. 62108			



**ELEVATION - GIRDERS 1 THRU 12 EXCEPT 3, 5 & 9**

(All Plates AASHTO M270M Grade 345, N.T.R.)  
Looking West, Girder East Face shown

\* Adjust shear connector spacing to miss top connection  $\bar{r}$  to head beams at Girder 4 & Girder 6.



**ELEVATION - GIRDER 5**

(All Plates AASHTO M270M Grade 345, N.T.R.)  
Looking West, Girder East Face shown

**GIRDER CONNECTION PLATE & BEARING STIFFENER SPACING (Meters)**

Girder No.	Girder East Side								Girder West Side							
	f1E	f2E	f3E	g1E	g2E	g3E	g4E	g5E	f1W	f2W	f3W	g1W	g2W	g3W	g4W	g5W
1	4.526	4.820	2.061	2.752	7.022	7.009	6.997	7.206	-	-	-	-	-	-	-	-
2	4.600	4.820	1.991	2.820	7.018	7.004	6.991	7.167	5.112	4.803	1.496	3.301	6.999	6.986	6.973	6.741
3	-	-	-	-	-	-	-	-	-	-	-	-	-	-	-	-
4	4.556	4.837	2.010	2.811	7.028	6.812	7.093	7.155	5.039	4.800	1.564	3.229	6.989	6.972	6.957	6.752
5	4.599	4.857	2.010	2.844	7.069	7.173	-	-	5.090	4.821	1.555	3.250	7.006	6.830	-	-
6	4.552	4.880	2.110	2.764	7.112	7.100	7.088	7.294	5.120	4.845	1.577	3.265	7.055	7.223	6.971	6.844
7	4.519	4.887	2.168	2.713	7.124	7.113	7.102	7.419	5.211	4.869	1.494	3.369	7.097	7.085	7.074	6.846
8	4.612	4.886	2.077	2.801	7.117	7.103	7.089	7.365	5.257	4.876	1.442	3.430	7.109	7.098	7.087	6.751
9	-	-	-	-	-	-	-	-	-	-	-	-	-	-	-	-
10	4.518	4.886	2.158	2.717	7.109	7.090	7.072	7.341	5.163	4.871	1.528	3.335	7.094	7.078	7.063	6.759
11	4.517	4.888	2.164	2.715	7.114	7.095	7.077	7.350	5.257	4.867	1.445	3.413	7.083	7.064	7.046	6.745
12	-	-	-	-	-	-	-	-	5.263	4.870	1.442	3.419	7.088	7.069	7.052	6.745

DESIGNED	JY
CHECKED	MEA
DRAWN	LK
CHECKED	MEA

**SHEAR CONNECTOR NUMBERS**

Girder No.	N3
1	57
2	57
3	-
4	53
5	27
6	51
7	57
8	58
9	-
10	58
11	58
12	58

**SHEAR CONNECTOR LOCATIONS (Meters)**

Girder No.	X6	X7
1	12.593	22.800
2	12.611	22.800
3	-	-
4	14.102	21.200
5	16.667	10.800
6	15.500	20.400
7	13.245	22.800
8	12.850	23.200
9	-	-
10	12.691	23.200
11	12.720	23.200
12	12.748	23.200

**Notes:**

- All dimensions are in millimeters (mm) except as noted.
- See Sht. No. 43 of 91 for Section A-A.
- See Sht. No. 35 of 91 for Dimensions  $f$ ,  $g$  and  $L5$ .
- Work this sheet with Sheet Nos. 41, 45 - 48 of 91.
- N.T.R. denotes notch toughness requirements are applicable.

ILLINOIS DEPARTMENT OF TRANSPORTATION  
I-94 EAST BOUND / IL 394 SOUTH BOUND  
**GIRDER ELEVATION AND DETAILS**  
SPAN 5  
SB IL ROUTE 394 OVER THORN CREEK  
F.A.P. 332 SECTION (02033.1 & 0312-708W) R-3  
COOK COUNTY  
STA. 440+704.350 STRUCTURE NO. 016-2800  
DATE JUL 18, 2005  
SCALE ---

**HNTB**

I:\Projects\02033.1\0312-708W\016-2800\Drawings\016-2800.dgn  
 08-JUL-2005 13:48