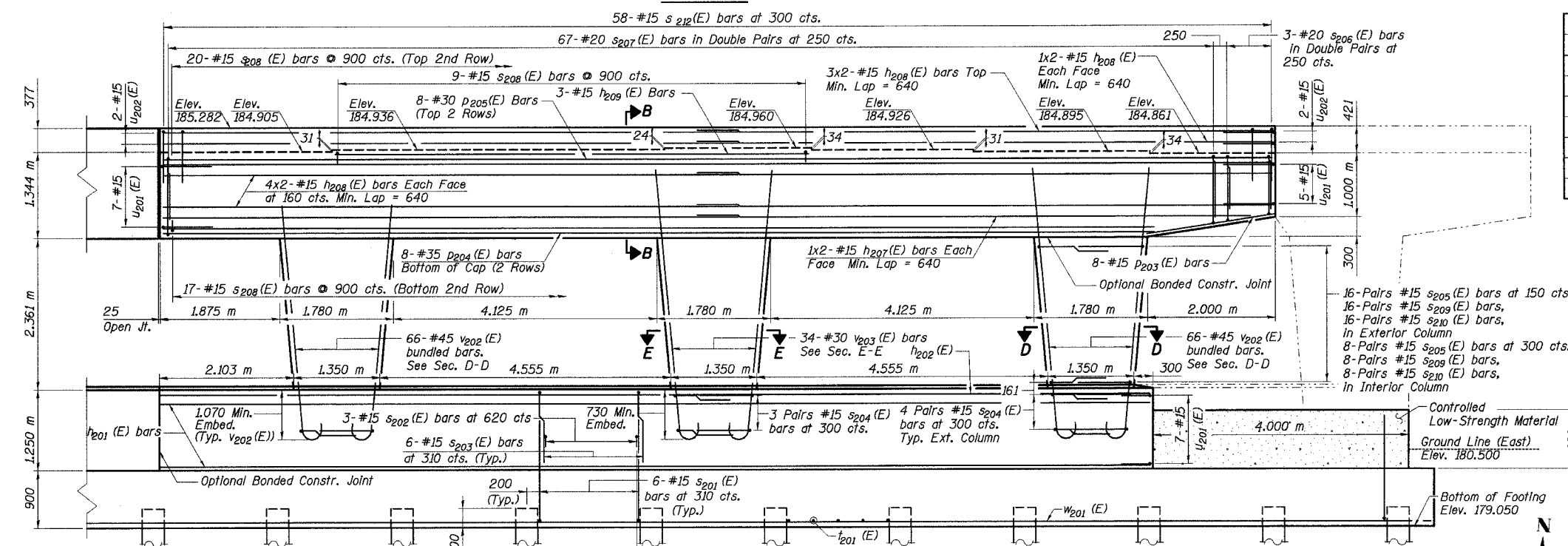
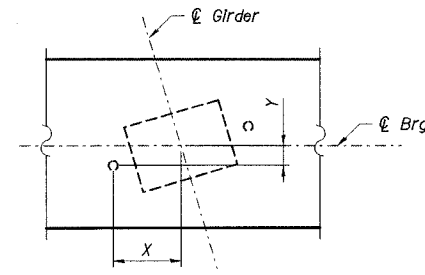
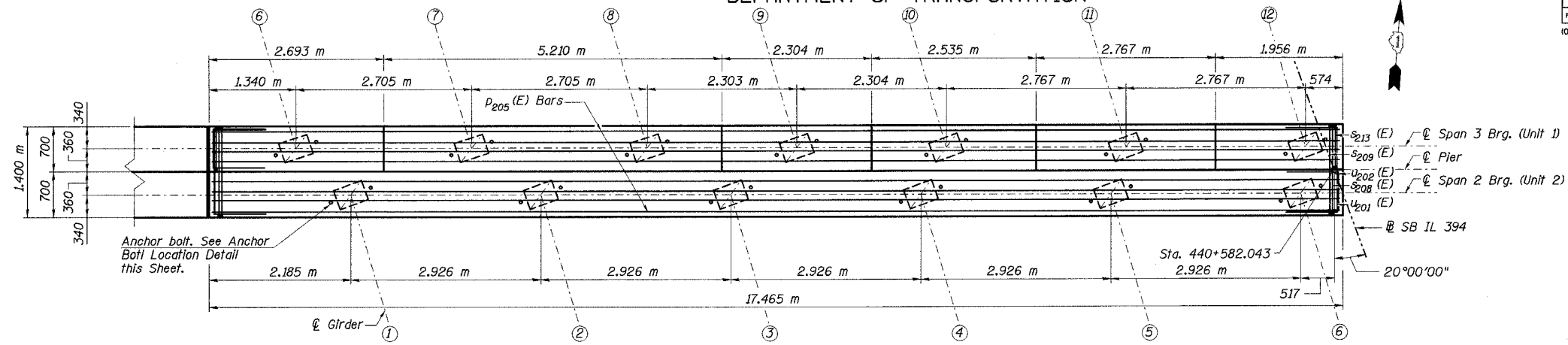
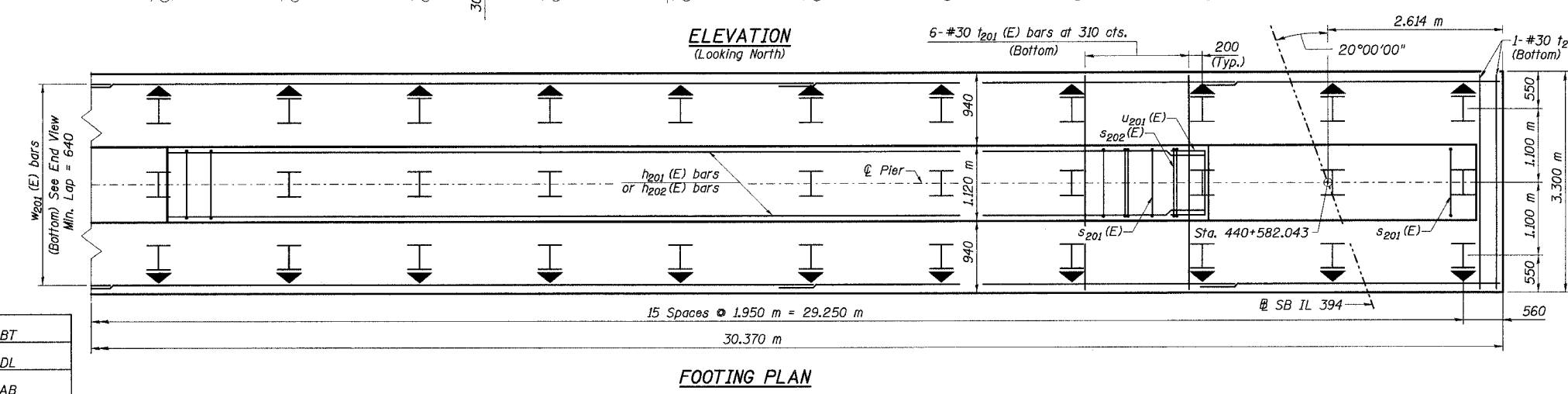


STATE OF ILLINOIS  
DEPARTMENT OF TRANSPORTATION

ROUTE NO.	SECTION	COUNTY	TOTAL SHEETS	SHEET NO.	SHEET NO. 73
F. A. I. 80/94	-	COOK	870	587	91 SHEETS
FED. ROAD DIST. NO. 1		ILLINOIS	FED. AID PROJECT-		
02033.1 & 0312-708W R-3		CONTRACT NO. 62108			



Gir.	Span 2 Brg.		Span 3 Brg.	
	X	Y	X	Y
1	307	112	6	311 102
2	307	112	7	311 102
3	307	112	8	311 102
4	307	112	9	309 107
5	307	112	10	307 112
6	307	112	11	307 112
-	-	-	12	307 112



- Notes:
1. Work this sheet with No. 73, & 74 of 91.
  2. Space reinforcement in cap to miss anchor bolts.
  3. Four steps monolithically with cap.
  4. All dimensions are in millimeters (mm) except as noted.
  5. Reinforcement Bars designated (E) shall be epoxy coated.
  6. For Bill of Materials and bar bending diagrams, See Sheet No. 74 of 91 Sheets.
  7. Bars Indicated thus "11x3-#15 cts." Indicates 11 lines of bars with 3 lengths per line.
  8. For bearing orientation, see Sheet No. 59 of 91.
- ↑ Indicates Battered Pier

DESIGNED	DBT
CHECKED	BDL
DRAWN	CAB
CHECKED	DBT

ILLINOIS DEPARTMENT OF TRANSPORTATION  
I-94 EAST BOUND / IL 394 SOUTH BOUND  
**PIER 2 PLAN & ELEVATION (EAST)**  
SB IL ROUTE 394 OVER THORN CREEK  
F.A.P. 332 SECTION (02033.1 & 0312-708W) R-3  
COOK COUNTY  
STA. 440+704.350 STRUCTURE NO. 016-2800  
DATE JUL 18, 2005  
SCALE ---

**HNTB**

L:\s1\145  
 L:\24562\CADD\B\SN\_2800\cadd\CTR\_19\_2800\p01\902224\_e\_2800.dgn  
 22-AUG-2005 09:44