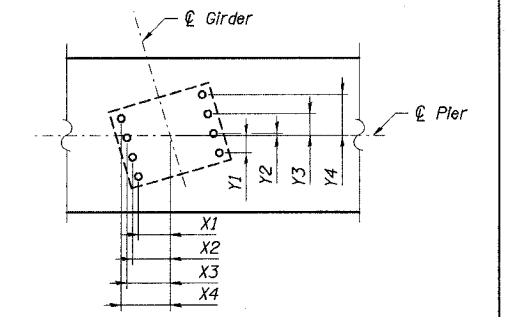
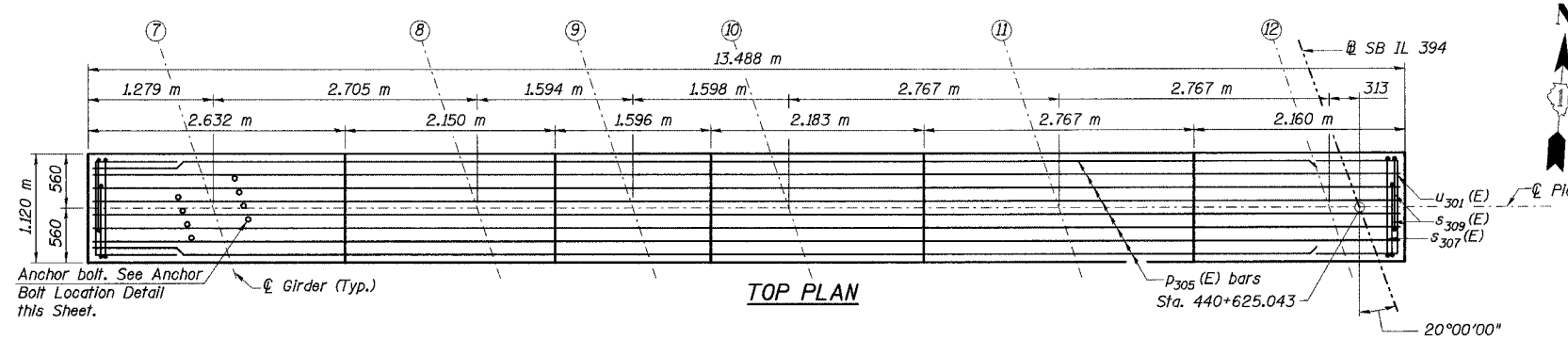


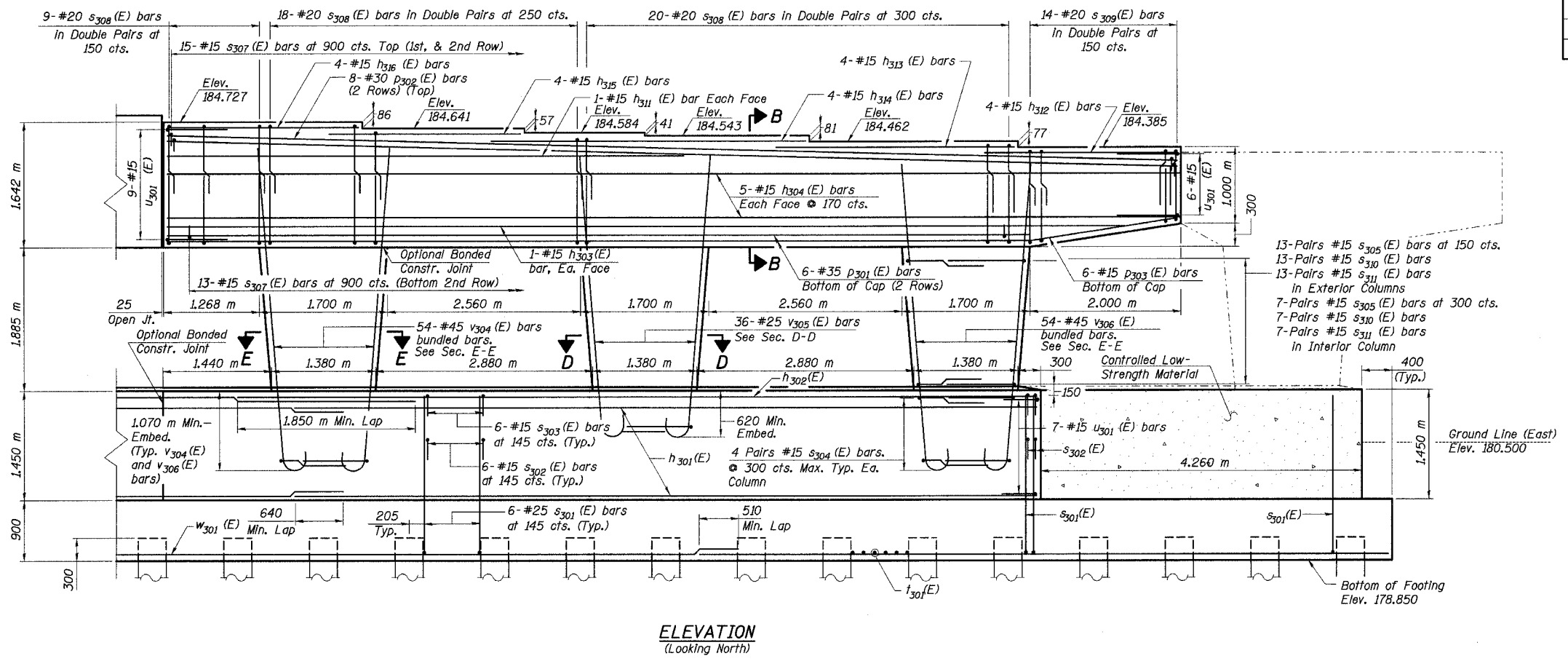
STATE OF ILLINOIS  
DEPARTMENT OF TRANSPORTATION

|                        |         |        |                            |           |              |
|------------------------|---------|--------|----------------------------|-----------|--------------|
| ROUTE NO.              | SECTION | COUNTY | TOTAL SHEETS               | SHEET NO. | SHEET NO. 76 |
| F. A. I. 80/94         | -       | COOK   | 870                        | 590       | 91 SHEETS    |
| FED. ROAD DIST. NO. 1  |         |        | ILLINOIS FED. AID PROJECT- |           |              |
| 0203.1 & 0312-708W R-3 |         |        | CONTRACT NO. 62108         |           |              |



ANCHOR BOLT LOCATION DETAILS

| Gr. | X1  | X2  | X3  | X4  | Y1  | Y2 | Y3  | Y4  |
|-----|-----|-----|-----|-----|-----|----|-----|-----|
| 7   | 221 | 267 | 313 | 358 | 114 | 26 | 166 | 304 |
| 8   | 221 | 267 | 313 | 358 | 114 | 26 | 166 | 304 |
| 9   | 216 | 264 | 312 | 360 | 108 | 31 | 170 | 308 |
| 10  | 211 | 262 | 312 | 362 | 102 | 36 | 174 | 311 |
| 11  | 211 | 262 | 312 | 362 | 102 | 36 | 174 | 311 |
| 12  | 211 | 261 | 311 | 362 | 102 | 36 | 174 | 311 |



- Notes:
1. Work this sheet with No. 75, 77, & 78 of 91.
  2. Space reinforcement in cap to miss anchor bolts.
  3. Four steps monolithically with cap.
  4. All dimensions are in millimeters (mm) except as noted.
  5. Reinforcement Bars designated (E) shall be epoxy coated.
  6. For Bill of Materials and bar bending diagrams, See Sheet No. 78 of 91 Sheets.
  7. Bars indicated thus "11x3-#15 cts." indicates 11 lines of bars with 3 lengths per line.
  8. For bearing orientation, see Sheet No. 59 of 91.

I:\projects\11-24-05\CADD\B\SN-2800\CDD\CTRL\19-2800\cdd\CTRL\19-2800.dgn  
 22-AUG-2005 09:47

|          |     |
|----------|-----|
| DESIGNED | DBT |
| CHECKED  | BDL |
| DRAWN    | CAB |
| CHECKED  | DBT |

ILLINOIS DEPARTMENT OF TRANSPORTATION  
I-94 EAST BOUND / IL 394 SOUTH BOUND  
PIER 3 PLAN & ELEVATION (EAST)

SB IL ROUTE 394 OVER THORN CREEK  
F.A.P. 332 SECTION (02033.1 & 0312-708W) R-3  
COOK COUNTY  
STA. 440+704.350 STRUCTURE NO. 016-2800  
DATE JUL 18, 2005  
SCALE ---

**HNTB**