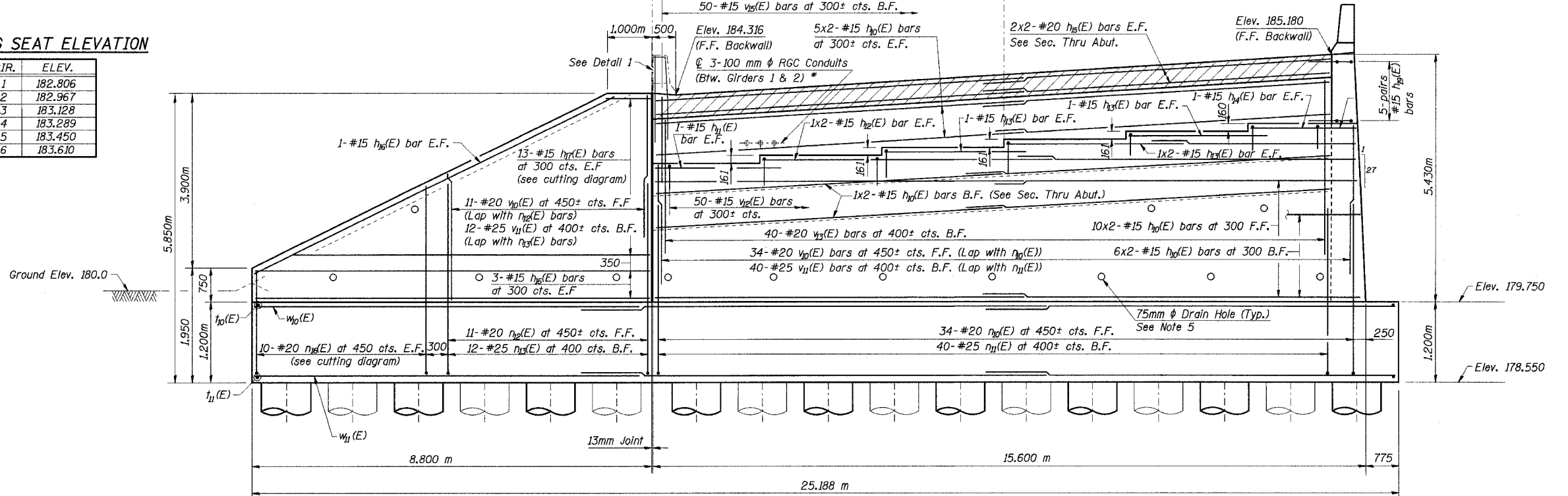


STATE OF ILLINOIS
DEPARTMENT OF TRANSPORTATION

ROUTE NO.	SECTION	COUNTY	TOTAL SHEETS	SHEET NO.	SHEET NO. 35
F. A. I. 80/94	*	COOK	870	645	56 SHEETS
FED. ROAD DIST. NO. 1	ILLINOIS	FED. AID PROJECT-			
0203.1 & 0312-708WR-3		CONTRACT NO. 62108			

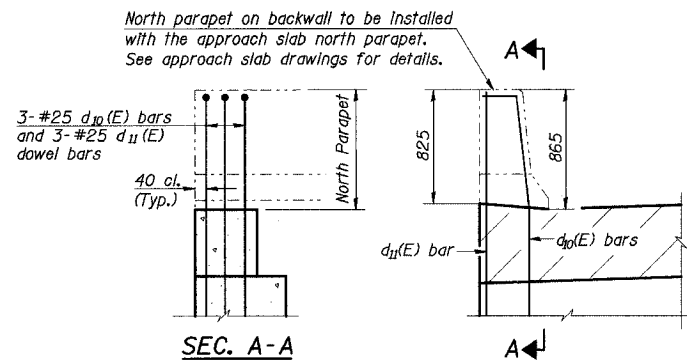
BEARING SEAT ELEVATION

GIR.	ELEV.
1	182.806
2	182.967
3	183.128
4	183.289
5	183.450
6	183.610

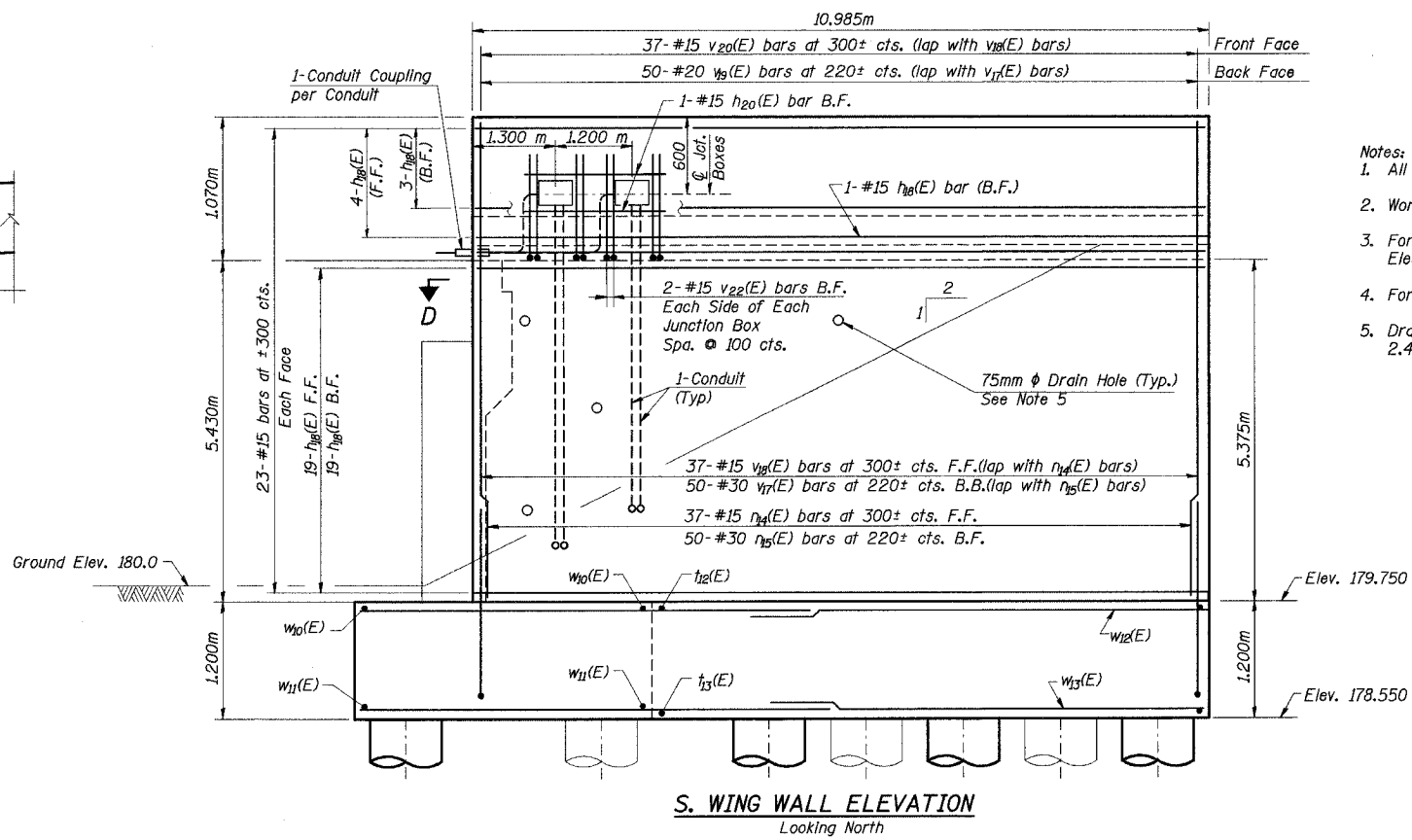


N. WING WALL AND ABUTMENT ELEVATION
Looking East

* General Contractor to coordinate with Electrical Contractor for location of embedded conduits. Paid under electrical work but installed by Bridge Contractor. Installation included for payment under Concrete Structures.



DETAIL 1
North Parapet on Backwall



S. WING WALL ELEVATION
Looking North

- Notes:
- All dimensions are in millimeters unless otherwise noted.
 - Work this sheet with Sheets 34, 36, & 37 of 56.
 - For details of Junction Box and method of payment, see Electrical Drawings.
 - For method of payment of conduit, see Electrical Drawings.
 - Drain holes in Abutment and Wingwalls to be provided at 2.400m cts. horizontally and 1.800m cts. vertically.

DESIGNED	JJK
CHECKED	KGN
DRAWN	LK
CHECKED	KGN

ILLINOIS DEPARTMENT OF TRANSPORTATION
I-94 EAST BOUND / IL 394 SOUTH BOUND
EAST ABUTMENT & WINGWALLS
ELEVATIONS
EB I-94 OVER THORN CREEK
F.A.I. 94 SECTION (0203.1 & 0312-708W) R-3
COOK COUNTY
STA. 20+509.000 STRUCTURE NO. 016-2807
DATE JUL 18, 2005
SCALE ---

HNTB