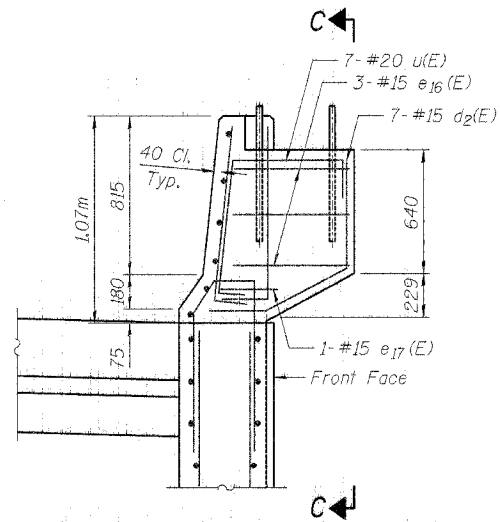
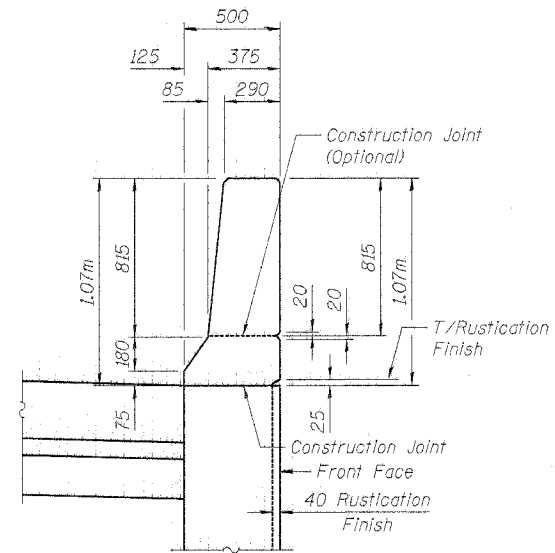


TRAFFIC BARRIER W/PILASTER



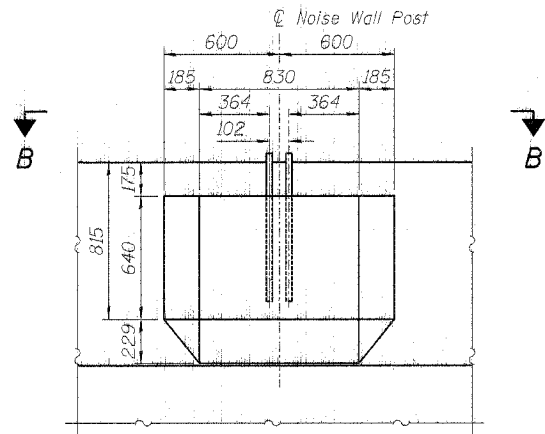
**TRAFFIC BARRIER W/PILASTER
SHOWING REINFORCEMENT**
(46 Thus)



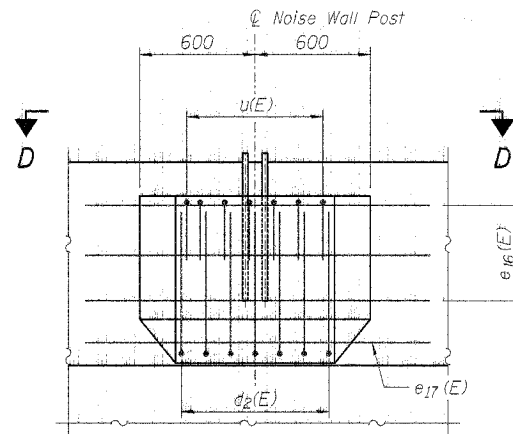
**TRAFFIC BARRIER
TYPICAL SECTION**

NOTES

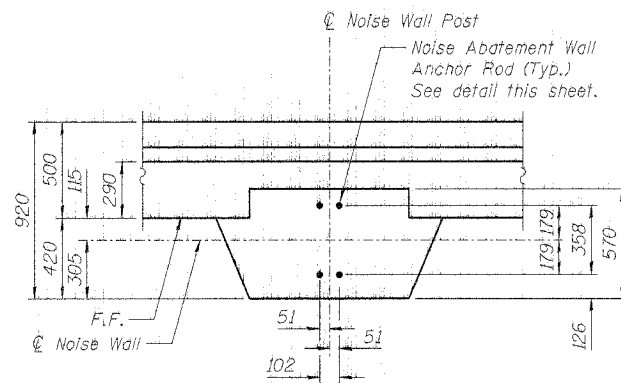
1. All dimensions are in millimeters (mm) except as noted.
2. Reinforcement bars designated (E) shall be epoxy coated.
3. All edges shall have a 20 mm chamfer unless noted otherwise.
4. For Rustication Finish Details, see Sheet No. 2.
5. For Bill of Material and Bar Details, see Sheet No. 7.



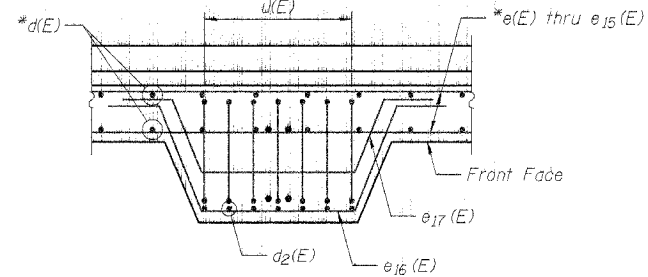
ELEVATION A-A



SECTION C-C

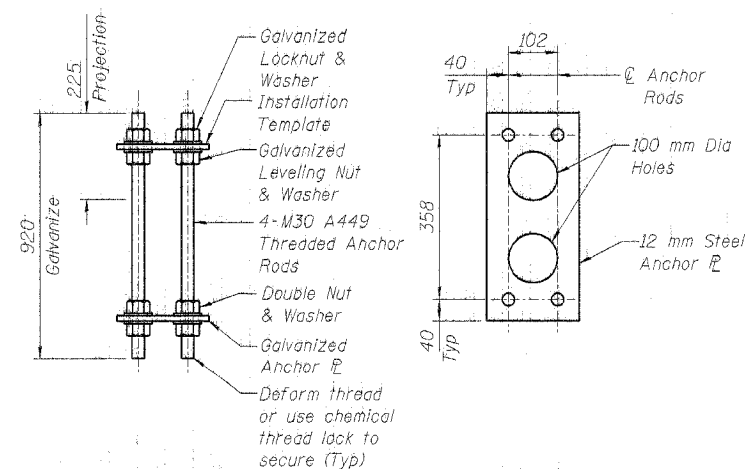


PLAN B-B



SECTION D-D

*Indicates Traffic Barrier Reinforcement Bars



ELEVATION PLAN
NOISE ABATEMENT WALL ANCHOR ROD ASSEMBLY
(46 Req'd)

DESIGNED	LAS
CHECKED	DAZ
DRAWN	SAW
CHECKED	LAS

ILLINOIS DEPARTMENT OF TRANSPORTATION
FAI ROUTE 80 (INTERSTATE 80/94)
INTERSTATE 294 TO US ROUTE 41
PILASTER DETAILS
IL 394 (F.A.I. 94) RETAINING WALL
SECTION (0203.1 & 0312-708W) R-3
COOK COUNTY
STA. 18+876.000 STRUCTURE NO. 016-W866
DATE JULY 18, 2005
SCALE

BRANCO & ZROKA
ENGINEERING, P.C.