

GENERAL NOTES

F.A.I. RTE.	SECTION	COUNTY	TOTAL SHEETS	SHEET NO.
80/94	2626.2-R-2	COOK/LAKE	1207	3
STA.	TO STA.			
FED. ROAD DIST. NO.	ILLINOIS	FED. AID PROJECT		
CONTRACT NO. 62114	INDOT DES. NO. 0100987			

GENERAL NOTES - MISCELLANEOUS

 ALL ELEVATIONS REFER TO 1988 N.A.V.D. DATUM.

THE CONTRACTOR WILL NOT BE ALLOWED TO SET UP A YARD OR FIELD OFFICE ON STATE PROPERTY WITHOUT WRITTEN PERMISSION FROM THE DEPARTMENT.

WHEN ARTIFICIAL LIGHTING IS USED IN NIGHT OPERATIONS, THE CONTRACTOR SHALL ADJUST THE INTENSITY OF ILLUMINATION AND THE ORIENTATION OF THE ARTIFICIAL LIGHTING AS DIRECTED BY THE ENGINEER TO PREVENT AN ADVERSE AFFECT ON THE VISIBILITY OF MOTORING PUBLIC AND ADJOINING RESIDENTIAL AREAS.

THE CONTRACTOR SHALL OBTAIN ANY PERMIT REQUIRED FROM ALL LOCAL JURISDICTIONS PRIOR TO START OF OPERATIONS.

GENERAL NOTES - ROADWAY

THE CONTRACTOR SHALL VERIFY THE DIMENSIONS OF THE CONCRETE BARRIER WALL AND BRIDGE PARAPETS WITH THE ENGINEER PRIOR TO FABRICATING THE BARRIER WALL AND PARAPET FORMS.

PAYMENT FOR REMOVAL OF TEMPORARY CONCRETE BARRIER SHALL BE COORDINATED WITH THE MAINTENANCE OF TRAFFIC PLAN AND SHALL OCCUR AS THE BARRIER IS NO LONGER NEEDED ON THE PROJECT. THE CONTRACTOR AND RESIDENT ENGINEER SHALL INVENTORY AND AGREE TO THE TOTAL LENGTH OF BARRIER FOR PAYMENT UNDER THIS ITEM BEFORE ANY OF THE BARRIER IS MOVED.

UNLESS NOTED OTHERWISE, SAW CUTTING WILL BE REQUIRED AND WILL NOT BE PAID SEPARATELY BUT SHALL BE INCLUDED IN THE PAYMENT FOR THE REMOVAL ITEM.

IT SHALL BE THE CONTRACTOR'S RESPONSIBILITY TO VERIFY ALL DIMENSIONS AND CONDITIONS EXISTING IN THE FIELD PRIOR TO CONSTRUCTION AND ORDERING OF MATERIALS.

ALL CURB AND COMBINATION CURB AND GUTTER REMOVAL IS PAID AS COMBINATION CURB AND GUTTER REMOVAL.

THE BITUMINOUS MATERIAL PRIME COAT QUANTITIES HAVE BEEN DETERMINED USING A RATE OF 0.00043 M-TONS PER SQUARE METER (0.0004 TONS PER SQ. YD.)

POROUS GRANULAR EMBANKMENT, SUBGRADE (PGES) MAY BE USED AT LOCATIONS WHERE UNSUITABLE OR UNSTABLE MATERIAL IS ENCOUNTERED DURING CONSTRUCTION. SOILS WILL BE TESTED BY THE ENGINEER IN ACCORDANCE WITH ARTICLE 301.03 AND THE UNDERCUT GUIDELINES IN THE IDOT SUBGRADE STABILITY MANUAL. THE ACTUAL LIMITS AND DEPTHS OF REMOVAL AND REPLACEMENT WILL BE DETERMINED BY THE ENGINEER. THE ENGINEER WILL DETERMINE IF THE REMOVED MATERIAL IS UNSUITABLE OR UNSTABLE BASED ON THE FOLLOWING CRITERIA. UNSTABLE MATERIAL IS THAT WHICH, WITH ADEQUATE PROCESSING, CAN MEET THE REQUIREMENTS OF EMBANKMENT AS OUTLINED IN THIS CONTRACT. UNSUITABLE MATERIAL DOES NOT MEET THE REQUIREMENTS FOR EMBANKMENT MATERIALS. UNSUITABLE SOILS SHALL BE REMOVED AND DISPOSED OF BY THE CONTRACTOR IN ACCORDANCE WITH SECTION 202 OF THE STANDARD SPECIFICATIONS FOR ROAD AND BRIDGE CONSTRUCTION. UNSTABLE MATERIALS WILL BE MEASURED FOR PAYMENT AS EARTH EXCAVATION AND MAY BE PROCESSED AND USED IN THE EMBANKMENT OR DISPOSED OF, IN ACCORDANCE WITH ARTICLE 202.03.

THE PHASE III CONSULTANT WILL BE RESPONSIBLE FOR THE RE-ESTABLISHMENT OF CONTROL AND TIE POINTS AS SHOWN ON THE ALIGNMENT AND TIES SHEETS. THE CONTRACTOR SHALL COORDINATE THE RE-ESTABLISHMENT OF EXISTING CONTROL AND TIE POINTS DISTURBED BY THE CONSTRUCTION ACTIVITIES WITH THE RESIDENT ENGINEER AND PHASE III CONSULTANT. EXISTING CONTROL AND TIE POINT LOCATIONS THAT ARE CONSIDERED NOT VIABLE UNDER THE FINAL CONDITIONS MAY BE RE-ESTABLISHED AT A MORE FEASIBLE LOCATION, AS APPROVED BY THE RESIDENT ENGINEER. THE PHASE III CONSULTANT SHALL SUBMIT DOCUMENTATION OF ALL RE-ESTABLISHED CONTROL AND TIE POINTS TO THE DEPARTMENT NO LATER THAN ONE (1) MONTH AFTER COMPLETION OF THE CONTRACT.

THE USE OF FLY ASH WILL BE PROHIBITED IN CONCRETE MIXES FOR PAVEMENTS, APPROACH SLABS, AND BRIDGE DECKS PLACED IN INDIANA FROM OCTOBER 15TH THROUGH APRIL 1ST. FLY ASH WILL ALSO BE PROHIBITED IN THE EASTBOUND DECK OF THE LITTLE CAL BRIDGE AT ALL TIMES.

BARRICADES: THE CONTRACTOR SHALL PROVIDE AND INSTALL TWO (2) WEIGHTED SAND BAGS ON EACH UNBALLASTED TYPE I OR TYPE II BARRICADE USED. (ONE [1] WEIGHTED SAND BAG ACROSS EACH UNSTRIPED BOTTOM RAIL OR ACROSS THE STRIPED RAIL AWAY FROM TRAFFIC). THIS WORK WILL NOT BE PAID FOR SEPARATELY, BUT THE COSTS SHALL BE CONSIDERED AS INCLUDED IN THE CONTRACT UNIT PRICES FOR THE CONSTRUCTION ITEMS INVOLVED, AND NO ADDITIONAL COMPENSATION WILL BE ALLOWED.

REMOVAL OF PAVEMENT MARKER REFLECTORS AS REQUIRED FOR TRAFFIC STAGING SHALL BE CONSIDERED INCIDENTAL TO THE COST OF MAINTENANCE OF TRAFFIC.

PRIOR TO THE INSTALLATION OF TOPSOIL, REGARDLESS OF SLOPE, THE SUBGRADE SHALL BE SURFACE ROUGHENED BY A TRACKED VEHICLE NO MORE THAN 7 DAYS PRIOR TO PLACEMENT. THIS WORK SHALL BE INCLUDED IN THE COST OF "TOPSOIL, FURNISH AND PLACE".

PLAN DIMENSIONS RELATIVE TO EXISTING STRUCTURES HAVE BEEN TAKEN FROM EXISTING PLANS AND AS SUCH ARE SUBJECT TO NOMINAL CONSTRUCTION VARIATIONS. THE CONTRACTOR SHALL VERIFY SUCH DIMENSIONS IN THE FIELD AND MAKE NECESSARY ADJUSTMENTS UPON APPROVAL OF THE ENGINEER.

THE CONTRACTOR SHALL VERIFY THE ELEVATIONS SHOWN IN THE PLANS WHERE THE PROPOSED PROFILE MEETS THE EXISTING PAVEMENT EDGE AND PRESENT THE RESULTS TO THE RESIDENT ENGINEER PRIOR TO THE FINAL GRADING. THE INFORMATION SHOWN IN THE PLAN IS DERIVED FROM DIGITAL IMAGERY AND MAY NEED TO BE ADJUSTED TO ENSURE A SMOOTH PROFILE AT THE MATCH LOCATION.

THE PHASES USED IN THE DRAWINGS ARE WITH REFERENCE TO THE OVERALL I-80/94 PROJECT AS FOLLOWS: PHASE I - CONSTRUCTION IN 2004; PHASE II - CONSTRUCTION IN 2005 AND PHASE III - CONSTRUCTION IN 2006.

THE CONTRACTOR SHALL SCHEDULE A PERIOD OF TIME (MINIMUM OF 5 WORKING DAYS) BETWEEN THE PLACEMENT OF THE SUB-BASE GRANULAR MATERIAL AND STABILIZED SUB-BASE 150MM TO ALLOW THE HIGHWAY LIGHTING AND SURVEILLANCE CONTRACTOR TIME TO INSTALL THE VEHICLE DETECTION SYSTEM.

GENERAL NOTES - DRAINAGE

BEFORE FINAL ACCEPTANCE OF THE PROJECT, ALL PROPOSED STORM SEWER LINES SHALL BE CLEANED AS DIRECTED BY THE ENGINEER. THE COST FOR THIS WORK IS CONSIDERED INCLUDED IN THE CONTRACT UNIT PRICE BID FOR STORM SEWERS OF THE TYPE, CLASS AND DIAMETER SPECIFIED.

REMOVAL OF MANHOLES, CATCH BASINS, INLETS, AND DRAINAGE STRUCTURES SHALL BE PAID AT THE CONTRACT UNIT PRICE EACH FOR "REMOVING MANHOLES", "REMOVING CATCH BASINS", "REMOVING INLETS", AND "DRAINAGE STRUCTURE TO BE REMOVED", REGARDLESS OF SHAPE, DEPTH, OR SIZE OF THE STRUCTURE AND SHALL INCLUDE REMOVAL OF ANY ATTACHED SLOTTED DRAIN.

WHERE EXISTING STORM SEWERS THAT ARE TO BE REMOVED AND ARE CONNECTED TO ANOTHER STRUCTURE OR SEWER THAT IS TO REMAIN IN PLACE, THE OPENING SHALL BE PLUGGED WITH SI CONCRETE. THE PLUGS SHALL NOT BE PAID FOR SEPARATELY BUT WILL BE INCLUDED IN THE UNIT BID PRICE FOR "STORM SEWER REMOVAL OF THE DIAMETER SPECIFIED".

PROPOSED STRUCTURES WITHIN THE SUB-GRADE AREA MAY TEMPORARILY BE PLATED (WITHOUT THE FRAME AND GRATE OR FRAME AND LID) TO FACILITATE THE CONSTRUCTION OPERATIONS. PLATES SHALL MEET THE APPROVAL OF THE ENGINEER, THE COST FOR MATERIALS, INSTALLATION, REMOVAL OF THE PLATES, AND SUBSEQUENT CONSTRUCTION OF THE STRUCTURE TO ITS FINISHED HEIGHT SHALL NOT BE PAID FOR SEPARATELY BUT WILL BE INCLUDED IN THE CONTRACT UNIT PRICE FOR THE DRAINAGE STRUCTURE.

REMOVAL OF COMBINED OR SANITARY SEWERS WILL BE PAID AT THE CONTRACT UNIT PRICE PER METER FOR "STORM SEWER REMOVAL", OF THE DIAMETER SPECIFIED.

TEMPORARY STORM SEWER PLUGS INSTALLED AND REMOVED IN THIS CONTRACT FOR STAGING PURPOSES WILL NOT BE PAID FOR SEPARATELY BUT WILL BE INCIDENTAL TO THE COST OF THE PROPOSED STORM SEWER.

BEFORE ORDERING: STORM SEWERS, CATCH BASINS, PIPE CULVERTS, PIPE DRAINS, MANHOLES, AND CULVERTS; THE CONTRACTOR SHALL CONFIRM THE EXACT LENGTH AND QUANTITY REQUIRED FROM FIELD MEASUREMENTS.

DRAINAGE NOTES FOR MWRD COMBINED SEWER NETWORKS

THE MWRD LOCAL SEWER SYSTEMS SECTION FIELD OFFICE MUST BE NOTIFIED AT LEAST TWO (2) WORKING DAYS PRIOR TO THE COMMENCEMENT OF ANY WORK (CALL 708-588-4055).

ALL DOWNSPOUTS AND FOOTING DRAINS SHALL DISCHARGE TO THE STORM SEWER SYSTEM.

ALL SANITARY SEWER PIPE MATERIALS AND JOINTS (AND STORM SEWER PIPE MATERIALS AND JOINTS IN A COMBINED SEWER AREA) SHALL CONFORM TO:

PIPE MATERIAL SPEC.	JOINT SPEC.
VITRIFIED CLAY PIPE	
VCP C-700	C-425
VCP (NO-BEL) C-700	
JOINT	C-425
COLLAR	D-1784

CONCRETE PIPE C-14	C-443
RCP C-76	C-443
ACP C-428	D-1869

ABS SEWER PIPE	
SOLID WALL 6" DIA. SDR 23.5	
ABS D-2751	D-2751

ABS COMPOSITE/TRUSS PIPE	
8"-15" DIA.	
ABS D-2680	D-2680

PVC GRAVITY SEWER PIPE	
6"-15" DIA. SDR 26	
D-3034	D-3212 OR D-2855

18"-27" DIA. F/DY=46	
F-679	D-3212 OR D-2855

CISP A-74	C-564
DIP A-21.51	A-21.11

ALL SANITARY SEWER CONSTRUCTION (AND STORM SEWER CONSTRUCTION IN COMBINED SEWER AREAS), REQUIRES STONE BEDDING WITH STONE 6 MM TO 25 MM IN SIZE, WITH MINIMUM BEDDING THICKNESS EQUAL TO ONE FOURTH THE OUTSIDE DIAMETER OF THE SEWER PIPE, BUT NOT LESS THAN 100 MM NOR MORE THAN 200 MM. MATERIAL SHALL BE CA-11 OR CA-13 AND SHALL BE EXTENDED AT LEAST 300 MM ABOVE THE TOP OF THE PIPE WHEN USING PVC.

"BAND SEAL" OR SIMILAR FLEXIBLE-TYPE COUPLINGS SHALL BE USED IN THE CONNECTION OF SEWER PIPES OF DISSIMILAR MATERIALS.

WHEN CONNECTING TO AN EXISTING SEWER MAIN BY MEANS OTHER THAN AN EXISTING WYE, TEE, OR AN EXISTING MANHOLE, ONE OF THE FOLLOWING METHODS SHALL BE USED:

1. CIRCULAR SAW-CUT OF SEWER MAIN BY PROPER TOOLS ("SEWER-TAP" MACHINE OR SIMILAR) AND PROPER INSTALLATION OF HUBWYE SADDLE OR HUB-TEE SADDLE.

2. REMOVE AN ENTIRE SECTION OF PIPE (BREAKING ONLY THE TOP OF ONE BELL) AND REPLACE WITH A WYE OR TEE BRANCH SECTION.

3. WITH PIPE CUTTER, NEATLY AND ACCURATELY CUT OUT DESIRED LENGTH OF PIPE FOR INSERTION OF PROPER FITTING, USING "BAND SEAL" OR SIMILAR COUPLINGS TO HOLD IT FIRMLY IN PLACE.

WHENEVER A SANITARY/COMBINED SEWER CROSSES UNDER A WATERMAIN, THE MINIMUM VERTICAL DISTANCE FROM THE TOP OF THE SEWER TO THE BOTTOM OF THE WATERMAIN SHALL BE 460 MM. FURTHERMORE, A MINIMUM HORIZONTAL DISTANCE OF 3.1 METERS BETWEEN SANITARY/COMBINED SEWERS AND WATERMAINS SHALL BE MAINTAINED UNLESS: THE SEWER IS LAID IN A SEPARATE TRENCH, KEEPING A MINIMUM 460 MM VERTICAL SEPARATION; OR THE SEWER IS LAID IN THE SAME TRENCH WITH THE WATERMAIN LOCATED AT THE OPPOSITE SIDE ON A BENCH OF UNDISTURBED EARTH, KEEPING A MINIMUM 460 MM VERTICAL SEPARATION. IF EITHER THE VERTICAL OR HORIZONTAL DISTANCES DESCRIBED ABOVE CANNOT BE MAINTAINED, OR THE SEWER CROSSES ABOVE THE WATERMAIN, THE SEWER SHALL BE CONSTRUCTED TO WATERMAIN STANDARDS.

ALL EXISTING SEPTIC SYSTEMS SHALL BE ABANDONED. ABANDONED TANKS SHALL BE FILLED WITH GRANULAR MATERIAL OR REMOVED.

ALL SANITARY MANHOLES, (AND STORM MANHOLES IN COMBINED SEWER AREAS), SHALL HAVE A MINIMUM INSIDE DIAMETER OF 1.2 METERS, AND SHALL BE CAST IN PLACE OR PRE-CAST REINFORCED CONCRETE.

GENERAL NOTES - EROSION CONTROL

THE CONTRACTOR SHALL COORDINATE THE WORK TO ALLOW THE EXIST GROUND COVER TO REMAIN IN AREAS WITHIN THE CONTRACT LIMITS NOT PROPOSED FOR CONSTRUCTION.

GENERAL NOTES - UTILITIES

BEFORE STARTING ANY EXCAVATION, THE CONTRACTOR SHALL CALL "J.U.L.I.E." AT (800) 892-0123 FOR FIELD LOCATIONS OF BURIED ELECTRIC, TELEPHONE AND GAS FACILITIES IN ILLINOIS AND CALL "I.U.P.P.S." AT (800) 382-5544 IN INDIANA (48-HOUR NOTIFICATION IS REQUIRED).

BEFORE STARTING ANY EXCAVATION, THE CONTRACTOR SHALL CALL TROY BOYD AT THE BORMAN TRAFFIC MANAGEMENT CENTER AT (219)939-3650.

THE CONTRACTOR SHALL INVITE ALL INDIANA UTILITIES TO THE PRE-CONSTRUCTION MEETING. CONTACT INFORMATION IS PROVIDED ON INDEX OF SHEETS AND HIGHWAY STANDARDS SHEET.

COMMITMENTS

THE EMERGENCY ACCESS TO INTERSTATE 80/94 WILL BE MAINTAINED AT ALL TIMES. ACCESS GATES OR OTHER INGRESS CONTROL WILL ALSO BE MAINTAINED DURING CONSTRUCTION. THERE ARE TWO EXISTING EMERGENCY ACCESS GATES TO INTERSTATE 80/94.

THE CONSTRUCTION OF ROADSIDE DRAINAGE SWALES MUST NOT INTERCEPT GROUNDWATER LEVEL. ROADSIDE SWALES ARE CONSTRUCTED WITHIN THE INTERCHANGE AREAS ARE TO ACCEPT ROADWAY DRAINAGE ONLY. THE TOPSOIL IN THE PERMANENT CONSTRUCTION ZONES WILL BE SEGREGATED FOR POTENTIAL RE-USE WITHIN THE TEMPORARY WORK AREAS AFTER CONSTRUCTION IS COMPLETE.

GENERAL NOTES - MISCELLANEOUS (CON'T.)
 WHEREVER IN THESE PLANS REFERENCE IS MADE TO "FENCE CHAIN LINK 1220 MM (IN)", IT SHALL MEAN "CHAIN LINK FENCE 1220 MM (IN)".
 WHEREVER IN THESE PLANS REFERENCE IS MADE TO "FENCE GATE CHAIN LINK 1220 X 3.7 MM (IN)" IT SHALL MEAN "CHAIN LINK GATE 1220 X 3.7 MM (IN)".

REVISIONS	
NAME	DATE
REV. JBS	11-14-05

ILLINOIS DEPARTMENT OF TRANSPORTATION
 I-80/94/US 6
 KINGERY-BORMAN EXPRESSWAY
 BURNHAM ROAD TO US 41

GENERAL NOTES

SCALE DATE 07/05 DRAWN BY ACE/CAD CHECKED BY TAE



Rev.

SUMMARY OF QUANTITIES

F.A.I. RTE.	SECTION	COUNTY	TOTAL SHEETS	SHEET NO.
80/94	2626.2-R-2	COOK/LAKE	1207	6
STA.		TO STA.		
FED. ROAD DIST. NO.		ILLINOIS	FED. AID PROJECT	
CONTRACT NO. 62114		INDOT DES. NO. 0100987		

CODE NO.	ITEM	UNIT	URBAN TOTAL QUANTITY	ROADWAY	LIGHTING-	SURVEIL-	SIGNING	ROADWAY	LIGHTING	SURVEIL-	SIGNING	VILLAGE			
				ILLINOIS	ILLINOIS	LANCE ILLINOIS	ILLINOIS	ILLINOIS	ILLINOIS	ILLINOIS	ILLINOIS	ILLINOIS	ILLINOIS	ILLINOIS	ILLINOIS
				CONSTRUCTION TYPE CODE											
				J000-2A	Y030-1E	Y032-1F	Y002-1C	J000-2A	Y030-1E	Y032-1F	Y002-1C	Y060			
M4230200	PORTLAND CEMENT CONCRETE DRIVEWAY PAVEMENT, 200MM	SQ M	1019	1019	0	0	0	0	0	0	0	0			
M4243000	PORTLAND CEMENT CONCRETE SIDEWALK, SPECIAL	SQ M	3.82	3.82	0	0	0	0	0	0	0	0			
M4401000	BITUMINOUS SURFACE REMOVAL (VARIABLE DEPTH)	SQ M	485	485	0	0	0	0	0	0	0	0			
M4402000	PAVEMENT REMOVAL	SQ M	83633	36900	0	0	0	46508	0	0	0	225			
M4402010	DRIVEWAY PAVEMENT REMOVAL	SQ M	37	37	0	0	0	0	0	0	0	0			
M4402040	COMBINATION CURB AND GUTTER REMOVAL	METER	1036.7	9.5	0	0	0	967.2	0	0	0	60			
M4402050	SIDEWALK REMOVAL	SQ M	252	18	0	0	0	234	0	0	0	0			
M4402060	APPROACH SLAB REMOVAL	SQ M	2321	0	0	0	0	2321	0	0	0	0			
M4402280	CONCRETE BARRIER REMOVAL	METER	1405	733	0	0	0	672	0	0	0	0			
M4402530	PAVED SHOULDER REMOVAL	SQ M	19434	6412	0	0	0	13022	0	0	0	0			
M4402540	PAVEMENT BREAKING	SQ M	8416	8416	0	0	0	0	0	0	0	0			
M4428420	CLASS D PATCHES, TYPE IV, 200MM	SQ M	99	38	0	0	0	61	0	0	0	0			
M4428450	CLASS D PATCHES, TYPE IV, 350MM	SQ M	415	82	0	0	0	333	0	0	0	0			
M4830360	PORTLAND CEMENT CONCRETE SHOULDERS - 360MM	SQ M	15836	15836	0	0	0	0	0	0	0	0			
M5010240	CONCRETE REMOVAL	CU M	429.7	0	0	0	0	429.7	0	0	0	0			
M5020100	STRUCTURE EXCAVATION	CU M	536	536	0	0	0	0	0	0	0	0			
M542C212	REINFORCED CONCRETE PIPE TEE, 300MM PIPE WITH 300MM RISER	EACH	1	1	0	0	0	0	0	0	0	0			
M542C228	REINFORCED CONCRETE PIPE TEE, 600MM PIPE WITH 300MM RISER	EACH	1	1	0	0	0	0	0	0	0	0			
M542C236	REINFORCED CONCRETE PIPE TEE, 750MM PIPE WITH 300MM RISER	EACH	2	2	0	0	0	0	0	0	0	0			
M542C252	REINFORCED CONCRETE PIPE TEE, 1200MM PIPE WITH 300MM RISER	EACH	6	6	0	0	0	0	0	0	0	0			
M542C348	REINFORCED CONCRETE PIPE TEE, 1200MM PIPE WITH 375MM RISER	EACH	1	1	0	0	0	0	0	0	0	0			
M5502840	STORM SEWERS, TYPE 1, REINFORCED CONCRETE CULVERT, STORM DRAIN, AND SEWER PIPE, CLASS IV 300MM	METER	554.8	487.2	0	0	0	67.6	0	0	0	0			
M5502850	STORM SEWERS, TYPE 1, REINFORCED CONCRETE CULVERT, STORM DRAIN, AND SEWER PIPE, CLASS IV 375MM	METER	28.4	28.4	0	0	0	0	0	0	0	0			
M5502860	STORM SEWERS, TYPE 1, REINFORCED CONCRETE CULVERT, STORM DRAIN, AND SEWER PIPE, CLASS IV 450MM	METER	199.1	199.1	0	0	0	0	0	0	0	0			
M5502880	STORM SEWERS, TYPE 1, REINFORCED CONCRETE CULVERT, STORM DRAIN, AND SEWER PIPE, CLASS IV 600MM	METER	279.8	279.8	0	0	0	0	0	0	0	0			
M5502900	STORM SEWERS, TYPE 1, REINFORCED CONCRETE CULVERT, STORM DRAIN, AND SEWER PIPE, CLASS III 750MM	METER	638.5	638.5	0	0	0	0	0	0	0	0			
M5502920	STORM SEWERS, TYPE 1, REINFORCED CONCRETE CULVERT, STORM DRAIN, AND SEWER PIPE, CLASS III 900MM	METER	149.4	149.4	0	0	0	0	0	0	0	0			
M5502990	STORM SEWERS, TYPE 1, REINFORCED CONCRETE CULVERT, STORM DRAIN, AND SEWER PIPE, CLASS I 1950MM	METER	88.2	88.2	0	0	0	0	0	0	0	0			
M5503050	STORM SEWERS, TYPE 2, REINFORCED CONCRETE CULVERT, STORM DRAIN, AND SEWER PIPE, CLASS III, 300MM	METER	62.9	62.9	0	0	0	0	0	0	0	0			
M5503060	STORM SEWERS, TYPE 2, REINFORCED CONCRETE CULVERT, STORM DRAIN, AND SEWER PIPE, CLASS III, 375MM	METER	77.4	77.4	0	0	0	0	0	0	0	0			
M5503111	STORM SEWERS, TYPE 2, REINFORCED CONCRETE CULVERT, STORM DRAIN, AND SEWER PIPE, CLASS III, 750MM	METER	122.8	122.8	0	0	0	0	0	0	0	0			
M5503150	STORM SEWERS, TYPE 2, REINFORCED CONCRETE CULVERT, STORM DRAIN, AND SEWER PIPE, CLASS III, 1200MM	METER	340	340	0	0	0	0	0	0	0	0			
M5503190	STORM SEWERS, TYPE 2, REINFORCED CONCRETE CULVERT, STORM DRAIN, AND SEWER PIPE, CLASS II, 1800MM	METER	117.2	117.2	0	0	0	0	0	0	0	0			

- SPECIALTY ITEMS
- • 100% STATE
- • • 100% INDIANA
- • • • 100% VILLAGE OF LANSING

REVISIONS	
NAME	DATE

ILLINOIS DEPARTMENT OF TRANSPORTATION
I-80/94/US 6
KINGERY-BORMAN EXPRESSWAY
BURNHAM ROAD TO US 41

SUMMARY OF QUANTITIES

SCALE: _____ DATE: 07/05

DRAWN BY: ACE/CAD
CHECKED BY: TAE

AMERICAN
CONSULTING ENGINEERS

Rev. 12-5-05

SUMMARY OF QUANTITIES

F.A.I. RTE.	SECTION	COUNTY	TOTAL SHEETS	SHEET NO.
80/94	2626.2-R-2	COOK/LAKE	1207	7
STA.	TO STA.			
FED. ROAD DIST. NO.	ILLINOIS	FED. AID PROJECT		
CONTRACT NO. 62114	INDOT DES. NO. 0100987			

CODE NO.	ITEM	UNIT	URBAN TOTAL QUANTITY	CONSTRUCTION TYPE CODE								VILLAGE OF LANSING *****	LANSING Y007 *****	
				ROADWAY ILLINOIS ..	LIGHTING- ILLINOIS ..	SURVEIL- LANCE ILLINOIS ..	SIGNING ILLINOIS ..	ROADWAY INDIANA	LIGHTING INDIANA	SURVEIL- LANCE INDIANA	SIGNING INDIANA			Y060
M5503200	STORM SEWERS, TYPE 2, REINFORCED CONCRETE CULVERT, STORM DRAIN, AND SEWER PIPE, CLASS II, 1950MM	METER	203.4	203.4	0	0	0	0	0	0	0	0	0	
M5504800	STORM SEWERS TO BE CLEANED	METER	944	0	0	0	0	944	0	0	0	0	0	
M5505570	STORM SEWERS, RUBBER GASKET, CLASS A, TYPE 1 600MM	METER	12	0	0	0	0	0	0	0	0	0	12	
M5510015	STORM SEWER REMOVAL 200MM	METER	63.9	63.9	0	0	0	0	0	0	0	0	0	
M5510025	STORM SEWER REMOVAL 300MM	METER	2387.2	1078.4	0	0	0	1281.8	0	0	0	0	27	
M5510035	STORM SEWER REMOVAL 375MM	METER	462.5	136.5	0	0	0	326	0	0	0	0	0	
M5510045	STORM SEWER REMOVAL 450MM	METER	222.3	0	0	0	0	222.3	0	0	0	0	0	
M5510060	STORM SEWER REMOVAL 600MM	METER	159.6	58.7	0	0	0	88.9	0	0	0	0	0	12
M5510070	STORM SEWER REMOVAL 750MM	METER	37.4	0	0	0	0	37.4	0	0	0	0	0	
M5510100	STORM SEWER REMOVAL 1350MM	METER	56	56	0	0	0	0	0	0	0	0	0	
* M5611210	TAPPING VALVES AND SLEEVES 150MM	EACH	1	0	0	0	0	0	0	0	0	0	1	
M6010110	PIPE DRAINS 150MM	METER	33.1	0	0	0	0	33.1	0	0	0	0	0	
M6010610	PIPE UNDERDRAINS 150MM	METER	4204.5	4204.5	0	0	0	0	0	0	0	0	0	
M6021410	MANHOLES, TYPE A, 1.2M DIAMETER, TYPE 1 FRAME, CLOSED LID	EACH	5	5	0	0	0	0	0	0	0	0	0	
M6021610	MANHOLES, TYPE A, 1.5M DIAMETER, TYPE 1 FRAME, CLOSED LID	EACH	3	3	0	0	0	0	0	0	0	0	0	
M6021810	MANHOLES, TYPE A, 1.8M DIAMETER, TYPE 1 FRAME, CLOSED LID	EACH	3	3	0	0	0	0	0	0	0	0	0	
* M6024410	VALVE VAULTS, TYPE A, 1.5M DIAMETER, TYPE 1 FRAME, CLOSED LID	EACH	1	0	0	0	0	0	0	0	0	0	1	
M6060500	COMBINATION CONCRETE CURB AND GUTTER, TYPE B-15.30	METER	60	0	0	0	0	0	0	0	0	0	60	
M6061500	COMBINATION CONCRETE CURB AND GUTTER, TYPE B-22.45	METER	13	13	0	0	0	0	0	0	0	0	0	
M6063610	CONCRETE MEDIAN SURFACE, 100MM (SPECIAL)	SQ M	125	125	0	0	0	0	0	0	0	0	0	
M6320030	GUARDRAIL REMOVAL	METER	1227.9	340	0	0	0	887.9	0	0	0	0	0	
M6370175	CONCRETE BARRIER, SINGLE FACE, 1065 MM HEIGHT	METER	125.8	125.8	0	0	0	0	0	0	0	0	0	
M6370275	CONCRETE BARRIER, DOUBLE FACE, 1065 MM HEIGHT	METER	1053.2	1053.2	0	0	0	0	0	0	0	0	0	
M6370805	CONCRETE BARRIER TRANSITION	METER	35.2	35.2	0	0	0	0	0	0	0	0	0	
M6371050	BARRIER BASE	METER	1327	1327	0	0	0	0	0	0	0	0	0	
* M6380600	MODULAR GLARE SCREEN SYSTEM	METER	4881	1686	0	0	0	3195	0	0	0	0	0	
M6420015	SHOULDER RUMBLE STRIP	METER	4552	4552	0	0	0	0	0	0	0	0	0	
* M6690100	BACKFILL PLUGS	CU M	7	7	0	0	0	0	0	0	0	0	0	
M6690400	SPECIAL WASTE GROUND WATER DISPOSAL	LITER	11088	11088	0	0	0	0	0	0	0	0	0	
M7030240	TEMPORARY PAVEMENT MARKING - LINE 150MM	METER	2175	2175	0	0	0	0	0	0	0	0	0	
M7030520	PAVEMENT MARKING TAPE, TYPE III 100MM	METER	17100.6	5396.6	0	0	0	11704	0	0	0	0	0	
M7030530	PAVEMENT MARKING TAPE, TYPE III 125MM	METER	3359.1	1347.6	0	0	0	2011.5	0	0	0	0	0	
M7030550	PAVEMENT MARKING TAPE, TYPE III 200MM	METER	328.3	0	0	0	0	328.3	0	0	0	0	0	

- SPECIALTY ITEMS
- • 100% STATE
- • • 100% INDIANA
- • • • 100% VILLAGE OF LANSING

REVISIONS	
NAME	DATE

ILLINOIS DEPARTMENT OF TRANSPORTATION
I-80/94/US 6
KINGERY-BORMAN EXPRESSWAY
BURNHAM ROAD TO US 41
SUMMARY OF QUANTITIES

SCALE DATE 07/05 DRAWN BY ACE/CAD CHECKED BY TAE



Rev. 12-5-05

SUMMARY OF QUANTITIES

F.A.I. RTE.	SECTION	COUNTY	TOTAL SHEETS	SHEET NO.
80/94	2626.2-R-2	COOK/LAKE	1207	8
STA.		TO STA.		
FED. ROAD DIST. NO.		ILLINOIS	FED. AID PROJECT	
CONTRACT NO. 62114		INDOT DES. NO. 0100987		

CODE NO.	ITEM	UNIT	URBAN TOTAL QUANTITY	ROADWAY	LIGHTING-	SURVEIL-	SIGNING	ROADWAY	LIGHTING	SURVEIL-	SIGNING	VILLAGE						
				ILLINOIS	ILLINOIS	LANCE ILLINOIS	ILLINOIS	ILLINOIS	ILLINOIS	ILLINOIS	ILLINOIS	ILLINOIS	ILLINOIS	ILLINOIS	ILLINOIS	ILLINOIS	ILLINOIS	ILLINOIS
				CONSTRUCTION TYPE CODE														
				J000-2A	Y030-1E	Y032-1F	Y002-1C	J000-2A	Y030-1E	Y032-1F	Y002-1C	Y000						
* M7030560	PAVEMENT MARKING TAPE, TYPE III 300MM	METER	49	0	0	0	0	49	0	0	0	0						
* M7031000	WORK ZONE PAVEMENT MARKING REMOVAL	SQ M	2210	708	0	0	0	1502	0	0	0	0						
M7040100	TEMPORARY CONCRETE BARRIER	METER	2264	1385	0	0	0	879	0	0	0	0						
M7040210	RELOCATE TEMPORARY CONCRETE BARRIER (SPECIAL)	METER	8617.4	3561.6	0	0	0	5055.8	0	0	0	0						
* M7200100	SIGN PANEL - TYPE 1	SQ M	23	0	0	0	23	0	0	0	0	0						
* M7200200	SIGN PANEL - TYPE 2	SQ M	4	0	0	0	4	0	0	0	0	0						
* M7200300	SIGN PANEL - TYPE 3	SQ M	154	0	0	0	154	0	0	0	0	0						
* M7230100	INSTALL EXISTING SIGN PANEL	SQ M	9	0	0	0	9	0	0	0	0	0						
* M7240330	REMOVE SIGN PANEL - TYPE 3	SQ M	3	0	0	0	3	0	0	0	0	0						
* M7270100	STRUCTURAL STEEL SIGN SUPPORT - BREAKAWAY	KG	540	0	0	0	540	0	0	0	0	0						
* M7330020	OVERHEAD SIGN STRUCTURE - SPAN, TYPE II-A (1.37M X 1.60M)	METER	90.7	0	0	0	90.7	0	0	0	0	0						
* M7330030	OVERHEAD SIGN STRUCTURE - SPAN, TYPE III-A (1.53M X 2.14M)	METER	27	0	0	0	27	0	0	0	0	0						
* M7330500	OVERHEAD SIGN STRUCTURE WALKWAY	METER	66.6	0	0	0	66.6	0	0	0	0	0						
* M7340100	CONCRETE FOUNDATIONS	CU M	2.9	0	0	0	2.9	0	0	0	0	0						
* M7340200	DRILLED SHAFT CONCRETE FOUNDATIONS	CU M	56.4	0	0	0	56.4	0	0	0	0	0						
* M7800605	EPOXY PAVEMENT MARKING - LINE 100MM	METER	8795.1	2707.1	0	0	0	6088	0	0	0	0						
* M7800610	EPOXY PAVEMENT MARKING - LINE 125MM	METER	2099.4	812.6	0	0	0	1286.8	0	0	0	0						
* M7800620	EPOXY PAVEMENT MARKING - LINE 200MM	METER	1245	0	0	0	0	1245	0	0	0	0						
* M7800625	EPOXY PAVEMENT MARKING - LINE 300MM	METER	272	0	0	0	0	272	0	0	0	0						
* M7802010	POLYUREA PAVEMENT MARKING TYPE I - LINE 100MM	METER	4552.4	4552.4	0	0	0	0	0	0	0	0						
* M7802030	POLYUREA PAVEMENT MARKING TYPE I - LINE 300MM	METER	173.4	173.4	0	0	0	0	0	0	0	0						
M7830100	PAVEMENT MARKING REMOVAL	SQ M	911	169	0	0	0	742	0	0	0	0						
* M8100260	CONDUIT IN TRENCH, 50MM DIA., PVC	METER	1029	0	0	0	0	0	1029	0	0	0						
* M8100300	CONDUIT IN TRENCH, 100MM DIA., PVC	METER	2974	0	0	126	0	0	104	2744	0	0						
* M8120120	CONDUIT EMBEDDED IN STRUCTURE, 50 MM DIA. GALVANIZED STEEL	METER	58	0	0	8	0	0	50	0	0	0						
* M8120130	CONDUIT EMBEDDED IN STRUCTURE, 65 MM DIA. GALVANIZED STEEL	METER	96	0	0	96	0	0	0	0	0	0						
* M8120230	CONDUIT EMBEDDED IN STRUCTURE, 50 MM DIA. PVC	METER	492	0	0	0	0	0	492	0	0	0						
* M8120270	CONDUIT EMBEDDED IN STRUCTURE, 100 MM DIA. PVC	METER	50	0	0	42	0	0	0	8	0	0						
* M8130203	JUNCTION BOX, STAINLESS STEEL, ATTACHED TO STRUCTURE, 300MM X 610MM X 200MM	EACH	4	0	0	0	0	0	0	4	0	0						
* M8131400	JUNCTION BOX, NON-METALLIC, EMBEDDED IN STRUCTURE, 525MM X 275MM X 200MM	EACH	19	0	0	0	0	0	19	0	0	0						
* M8150200	TRENCH AND BACKFILL FOR ELECTRICAL WORK	METER	2673	0	0	582	0	0	719	1372	0	0						
* MX030063	STORM SEWER (WATER MAIN REQUIREMENTS) 300MM	METER	27	0	0	0	0	0	0	0	0	27						
* MX030110	REMOVE AND PLUG ABANDONED WATER MAIN	METER	235.2	0	0	0	0	0	0	0	0	235.2						

- SPECIALTY ITEMS
- • 100% STATE
- • • 100% INDIANA
- • • • 100% VILLAGE OF LANSING

00 3F1Y-3C

Rev. 12-5-05

REVISIONS	
NAME	DATE

ILLINOIS DEPARTMENT OF TRANSPORTATION
I-80/94/US 6
KINGERY-BORMAN EXPRESSWAY
BURNHAM ROAD TO US 41
SUMMARY OF QUANTITIES

SCALE: _____ DRAWN BY: ACE/CAD
DATE: 07/05 CHECKED BY: TAE

AMERICAN
CONSULTING ENGINEERS

SUMMARY OF QUANTITIES

F.A.I. RTE.	SECTION	COUNTY	TOTAL SHEETS	SHEET NO.
80/94	2626.2-R-2	COOK/LAKE	1207	9
STA.		TO STA.		
FED. ROAD DIST. NO.		ILLINOIS	FED. AID PROJECT	
CONTRACT NO. 62114		INDOT DES. NO. 0100987		

CODE NO.	ITEM	UNIT	URBAN TOTAL QUANTITY	ROADWAY	LIGHTING-	SURVEIL-	SIGNING	ROADWAY	LIGHTING	SURVEIL-	SIGNING	VILLAGE		
				ILLINOIS	ILLINOIS	LANCE ILLINOIS	ILLINOIS	INDIANA	INDIANA	LANCE INDIANA	INDIANA	OF LANSING		
				CONSTRUCTION TYPE CODE										
				J000-2A	Y030-1E	Y032-1F	Y002-1C	J000-2A	Y030-1E	Y032-1F	Y002-1C	Y060		
MX030144	CATCH BASINS, 1.2M BY 0.9M SPECIAL, TYPE 20 FRAME AND GRATE	EACH	45	45	0	0	0	0	0	0	0	0		
MX030170	CATCH BASINS, 1.2M BY 1.5M SPECIAL, TYPE 22 FRAME AND GRATE	EACH	6	6	0	0	0	0	0	0	0	0		
MX030236	REMOVE STEEL SHEET PILING	SQ M	2161	2161	0	0	0	0	0	0	0	0		
MX030504	TEMPORARY PAVEMENT (INTERSTATE)	SQ M	6264	3204	0	0	0	3060	0	0	0	0		
MX030505	STORM SEWERS TO BE GROUTED	CU M	1296.1	1296.1	0	0	0	0	0	0	0	0		
* MX032159	CONDUIT ENCASED, REINFORCED CONCRETE, 100MM DIA. PVC, 1 WIDE X 1 HIGH	METER	329	0	168	161	0	0	0	0	0	0		
* MX032160	CONDUIT ENCASED, REINFORCED CONCRETE, 100MM DIA. PVC, 2 WIDE X 1 HIGH	METER	118	0	0	118	0	0	0	0	0	0		
MX032178	TEMPORARY INFORMATION SIGNING	SQ M	193	17	0	0	0	76	0	0	0	0		
MX033183	SOIL STABILIZERS	KG	580885	115748	0	0	0	465137	0	0	0	0		
MX033290	SEDIMENT CONTROL, SILT FENCE	METER	2669.7	190.4	0	0	0	2479.3	0	0	0	0		
MX033291	SEDIMENT CONTROL, SILT FENCE MAINTENANCE	METER	1334.9	95.2	0	0	0	1239.7	0	0	0	0		
MX033292	SEDIMENT CONTROL, STABILIZED CONSTRUCTION ENTRANCE	SQ M	322	0	0	0	0	322	0	0	0	0		
MX033303	SEDIMENT CONTROL, STABILIZED CONSTRUCTION ENTRANCE MAINTENANCE	SQ M	812	78	0	0	0	734	0	0	0	0		
* MX033401	CONDUIT IN TRENCH, 50MM DIA., RIGID GALVANIZED STEEL	METER	10	0	0	10	0	0	0	0	0	0		
* MX033487	BLIND FLANGE CAP, 150MM DIA.	EACH	1	0	0	0	0	0	0	0	0	0	1	
MX355200	BITUMINOUS BASE COURSE SUPERPAVE, 200MM	SQ M	90	90	0	0	0	0	0	0	0	0		
MX406012	BITUMINOUS CONCRETE SURFACE COURSE, SUPERPAVE, MIX "C", N50	M TON	32.1	11.1	0	0	0	0	0	0	0	0	21	
MX406078	POLYMERIZED BITUMINOUS CONCRETE SURFACE COURSE, SUPERPAVE, MIX "F", N105	M TON	52.2	52.2	0	0	0	0	0	0	0	0		
MX406220	BITUMINOUS CONCRETE BINDER COURSE, SUPERPAVE, IL-19.0, N105	M TON	36.1	36.1	0	0	0	0	0	0	0	0		
MX406271	BITUMINOUS CONCRETE BINDER COURSE, SUPERPAVE, IL-19.0, N50 150MM	SQ M	225	0	0	0	0	0	0	0	0	0	225	
MX550175	DUCTILE IRON PIPE, STORM SEWER, 150MM	METER	28	28	0	0	0	0	0	0	0	0		
MX637150	CONCRETE BARRIER, SINGLE FACE, 1065 MM HEIGHT, SPECIAL	METER	113	113	0	0	0	0	0	0	0	0		
MX704200	REMOVE TEMPORARY CONCRETE BARRIER	METER	3881	1433	0	0	0	2448	0	0	0	0		
MX013825	CONTROLLED LOW STRENGTH MATERIAL	CU M	25	0	0	0	0	0	0	0	0	0	25	
MZ022800	FENCE REMOVAL	METER	2346	327	0	0	0	2019	0	0	0	0		
MZ068400	STEEL CASINGS 1050MM	METER	5	0	0	0	0	0	0	0	0	0	5	
X0301229	ACCIDENT INVESTIGATION SITE	CAL MO	4	4	0	0	0	0	0	0	0	0		
X0320333	ROADWAY CLEANING (SPECIAL)	EACH	18	6	0	0	0	12	0	0	0	0		
X0322394	CONCRETE FILLED STEEL POST REMOVAL	EACH	10	10	0	0	0	0	0	0	0	0		
X0322917	PROPOSED STORM SEWER CONNECTION TO EXISTING MANHOLE	EACH	10	5	0	0	0	5	0	0	0	0		
X0323426	SEDIMENT CONTROL, DRAINAGE STRUCTURE INLET FILTER CLEANING	EACH	1316	595	0	0	0	721	0	0	0	0		
X0323817	SEDIMENT CONTROL, SILT CURTAIN	EACH	3	0	0	0	0	3	0	0	0	0		
X0324045	SEDIMENT CONTROL, STABILIZED CONSTRUCTION ENTRANCE REMOVAL	EACH	6	1	0	0	0	5	0	0	0	0		

- SPECIALTY ITEMS
- • 100% STATE
- • • 100% INDIANA
- • • • 100% VILLAGE OF LANSING

REVISIONS	
NAME	DATE

ILLINOIS DEPARTMENT OF TRANSPORTATION
I-80/94/US 6
KINGERY-BORMAN EXPRESSWAY
BURNHAM ROAD TO US 41
SUMMARY OF QUANTITIES

SCALE: _____ DATE: 07/05 DRAWN BY: ACE/CAD CHECKED BY: TAE



REV. 12-5-05

SUMMARY OF QUANTITIES

ALL DIMENSIONS IN METERS EXCEPT PAY ITEMS AND UNLESS NOTED OTHERWISE

F.A.I. RTE.	SECTION	COUNTY	TOTAL SHEETS	SHEET NO.
80/94	2626.2-R-2	COOK/LAKE	1207	10
STA.		TO STA.		
FED. ROAD DIST. NO.		ILLINOIS	FED. AID PROJECT	
CONTRACT NO. 62114		INDOT DES. NO. 0100987		

CODE NO.	ITEM	UNIT	URBAN TOTAL QUANTITY	ROADWAY	LIGHTING-	SURVEIL-	SIGNING	ROADWAY	LIGHTING	SURVEIL-	SIGNING	VILLAGE			
				ILLINOIS	ILLINOIS	LANCE ILLINOIS	ILLINOIS	INDIANA	INDIANA	LANCE INDIANA	INDIANA	OF LANSING			
				CONSTRUCTION TYPE CODE											
				J000-2A	Y030-1E	Y032-1F	Y002-1C	J000-2A	Y030-1E	Y032-1F	Y002-1C	Y060			
X0324698	APPLY DUST SUPPRESSION AGENTS	UNIT	2885	1393	0	0	0	1492	0	0	0	0			
* X0520100	JUNCTION BOX, TYPE J	EACH	1	0	0	1	0	0	0	0	0	0			
X6020166	DRAINAGE STRUCTURES, TYPE 1 SPECIAL WITH TWO TYPE 20 FRAME AND GRATES	EACH	10	10	0	0	0	0	0	0	0	0			
X7011015	TRAFFIC CONTROL AND PROTECTION (EXPRESSWAYS)	L SUM	1	.33	0	0	0	.67	0	0	0	0			
X7013820	TRAFFIC CONTROL SURVEILLANCE, EXPRESSWAYS	CAL DA	240	80	0	0	0	160	0	0	0	0			
X7015000	CHANGEABLE MESSAGE SIGN	CAL MD	16	8	0	0	0	8	0	0	0	0			
XX001443	STEEL PLATES TO BE INSTALLED ON DRAINAGE STRUCTURE	EACH	12	8	0	0	0	4	0	0	0	0			
* XX004760	FIRE HYDRANT WITH AUXILIARY VALVE, VALVE BOX AND TEE	EACH	1	0	0	0	0	0	0	0	0	1			
XX005949	DRAINAGE STRUCTURES TO BE CLEANED	EACH	25	0	0	0	0	25	0	0	0	0			
Z0002600	BAR SPLICERS	EACH	36	36	0	0	0	0	0	0	0	0			
Z0013798	CONSTRUCTION LAYOUT	L SUM	1	.33	0	0	0	.67	0	0	0	0			
Z0018700	DRAINAGE STRUCTURE TO BE REMOVED	EACH	24	24	0	0	0	0	0	0	0	0			
Z0029999	IMPACT ATTENUATOR REMOVAL	EACH	6	2	0	0	0	4	0	0	0	0			
Z0030240	IMPACT ATTENUATORS, TEMPORARY (NON- REDIRECTIVE), TEST LEVEL 2	EACH	8	0	0	0	0	8	0	0	0	0			
Z0030250	IMPACT ATTENUATORS, TEMPORARY (NON- REDIRECTIVE), TEST LEVEL 3	EACH	7	3	0	0	0	4	0	0	0	0			
Z0030260	IMPACT ATTENUATORS, TEMPORARY (FULLY REDIRECTIVE, NARROW), TEST LEVEL 3	EACH	2	2	0	0	0	2	0	0	0	0			
Z0030330	IMPACT ATTENUATORS, RELOCATE (FULLY REDIRECTIVE), TEST LEVEL 3	EACH	1	0	0	0	0	1	0	0	0	0			
Z0030350	IMPACT ATTENUATORS, RELOCATE (NON- REDIRECTIVE), TEST LEVEL 3	EACH	8	5	0	0	0	3	0	0	0	0			
Z0076600	TRAINEEES	—HOUR—	0	0	0	0	0	0	0	0	0	0			
* MX033637	BLIND FLANGE CAP, 600MM DIA	EACH	5	0	0	0	0	0	0	0	0	5			
* MX033668	DUCTILE IRON WATER MAIN RESTRAINED JOINT TYPE, 600MM	METER	35	0	0	0	0	0	0	0	0	35			
* MX033669	DUCTILE IRON WATER MAIN RESTRAINED JOINT TYPE, 150MM	METER	8	0	0	0	0	0	0	0	0	8			
* MX033670	DUCTILE IRON WATER MAIN RESTRAINED JOINT TYPE, 600MM IN STEEL CASING PIPE, 1050MM AUGURED	METER	93	0	0	0	0	0	0	0	0	93			
* M6111740	TAPPING VALVES AND SLEEVES, 600MM	EACH	2	0	0	0	0	0	0	0	0	2			
* MX033672	VALVE VAULTS, TYPE A, 2.1M DIA., TYPE 1 FRAME, CLOSED LID	EACH	2	0	0	0	0	0	0	0	0	2			
* MX033673	ABANDON WATER MAIN IN PLACE, 600MM	L SUM	1	0	0	0	0	0	0	0	0	1			
MX033582	LUG SYSTEM COMPLETE (SPECIAL) 14.4 METER	EACH	1	1	0	0	0	0	0	0	0	0			
MX033583	REINFORCED CONCRETE PIPE TEE, 1950MM PIPE WITH 300MM RISER	EACH	3	3	0	0	0	0	0	0	0	0			
MX033584	REINFORCED CONCRETE PIPE TEE, 1950MM PIPE WITH 450MM RISER	EACH	1	1	0	0	0	0	0	0	0	0			
MX033585	STORM SEWER REMOVAL, 1200MM X 600MM ELLIPTICAL	METER	62	0	0	0	0	0	0	0	0	62			
MX033581	BARRIER SUPPORT STRUCTURE FOR NOISE ABATEMENT WALL	METER	279.6	279.6	0	0	0	0	0	0	0	0			
M6380205	CONCRETE GLARE SCREEN, SPECIAL	METER	22.8	22.8	0	0	0	0	0	0	0	0			

△
△
△
△
△
△

- SPECIALTY ITEMS
- • 100% STATE
- • • 100% INDIANA
- • • • 100% VILLAGE OF LANSING
- △ SFTV-3N

△ Rev. 12-5-05

REVISIONS	
NAME	DATE

ILLINOIS DEPARTMENT OF TRANSPORTATION
I-80/94/US 6
KINGERY-BORMAN EXPRESSWAY
BURNHAM ROAD TO US 41
SUMMARY OF QUANTITIES

SCALE _____ DATE 07/05

DRAWN BY ACE/CAD
CHECKED BY TAE

AMERICAN
CONSULTING ENGINEERS

SUMMARY OF QUANTITIES

ALL DIMENSIONS IN METERS EXCEPT PAY ITEMS AND UNLESS NOTED OTHERWISE

F.A.I. RTE. 80/94	SECTION 2626.2-R-2	COUNTY COOK/LAKE	TOTAL SHEETS 1207	SHEET NO. 13
STA. TO STA.		FED. ROAD DIST. NO. ILLINOIS FED. AID PROJECT		
CONTRACT NO. 62114		INDOT DES. NO. 0100987		

CODE NO.	ITEM	UNIT	URBAN TOTAL QUANTITY	ROADWAY	LIGHTING-	SURVEIL-	SIGNING	ROADWAY	LIGHTING	SURVEIL-	SIGNING	VILLAGE		
				ILLINOIS	ILLINOIS	LANCE ILLINOIS	ILLINOIS	ILLINOIS	ILLINOIS	ILLINOIS	ILLINOIS	ILLINOIS	ILLINOIS	ILLINOIS
				CONSTRUCTION TYPE CODE										
				J000-2A	Y030-1E	Y032-1F	Y002-1C	J000-2A	Y030-1E	Y032-1F	Y002-1C	Y060		
MX033616	INLET TYPE HA. (SPECIAL) WITH SLOTTED DRAIN (INDIANA)	EACH	7	0	0	0	0	7	0	0	0	0		
MX033617	MANHOLE, C2 (INDIANA)	EACH	1	0	0	0	0	1	0	0	0	0		
MX033618	MANHOLE, D2 (INDIANA)	EACH	3	0	0	0	0	3	0	0	0	0		
MX033619	MANHOLE, E4 (INDIANA)	EACH	2	0	0	0	0	2	0	0	0	0		
MX033661	AUTOMATIC DRAINAGE GATE, 600MM (INDIANA)	EACH	1	0	0	0	0	1	0	0	0	0		
MX033662	MANHOLE, C2 WITH SLOTTED DRAIN (INDIANA)	EACH	4	0	0	0	0	4	0	0	0	0		
MX033687	INLET, TYPE HA (MODIFIED) WITH SLOTTED DRAIN (INDIANA)	EACH	6	0	0	0	0	6	0	0	0	0		
MX033689	CASTING, 5, FURNISH AND ADJUST TO GRADE (INDIANA)	EACH	4	0	0	0	0	4	0	0	0	0		
* MX033684	SPAN OVERHEAD SIGN STRUCTURE, BOX TRUSS (INDIANA)	METER	101	0	0	0	0	0	0	0	101	0		
* MX033685	SPAN OVERHEAD SIGN STRUCTURE, BOX TRUSS SPECIAL (INDIANA)	METER	28	0	0	0	0	0	0	0	28	0		
* MX033622	REINFORCING STEEL, SIGN FOUNDATION (INDIANA)	KG	15130	0	0	0	0	0	0	0	15130	0		
* MX033623	SIGN PANEL WITH LEGEND (INDIANA)	SQ M	211	0	0	0	0	0	0	0	211	0		
* MX033624	TUBULAR TRAFFIC SIGN POST (INDIANA)	EACH	12	0	0	0	4	0	0	0	8	0		
* MX033625	CONCRETE SIGN FOUNDATION (INDIANA)	CU M	102.5	0	0	0	0	0	0	0	102.5	0		
* MX033683	SIGN POST, WOOD (INDIANA)	METER	27	0	0	0	0	0	0	0	27	0		
* MX033626	SIGN, SHEET, ENCAPSULATED LENS WITH LEGEND, 2.54MM THICKNESS (INDIANA)	SQ M	29	0	0	0	0	0	0	0	29	0		
* MX033627	SIGN, SHEET, ENCAPSULATED LENS WITH LEGEND, 3.18MM THICKNESS (INDIANA)	SQ M	30	0	0	0	0	0	0	0	30	0		
* MX033663	CONCRETE FOUNDATION WITH GROUNDING, 750MM DIA X 1500MM (INDIANA)	EACH	9	0	0	0	0	0	9	0	0	0		
* MX033628	LINE, EPOXY, SOLID, WHITE, 100 MM (INDIANA)	METER	2915	0	0	0	0	2915	0	0	0	0		
* MX033629	LINE, EPOXY, SOLID, YELLOW, 100 MM (INDIANA)	METER	4133	0	0	0	0	4133	0	0	0	0		
* MX033630	LINE, EPOXY, SOLID, WHITE, 200 MM (INDIANA)	METER	2741	0	0	0	0	2741	0	0	0	0		
* MX033664	LINE, EPOXY, SOLID, WHITE, 600 MM (INDIANA)	METER	336	0	0	0	0	336	0	0	0	0		
* MX033631	LINE, EPOXY, BROKEN, WHITE, 125 MM (INDIANA)	METER	3230	0	0	0	0	3230	0	0	0	0		
* MX033632	PAVEMENT MESSAGE MARKING, EPOXY, WORD ONLY (INDIANA)	SQ M	10.5	0	0	0	0	10.5	0	0	0	0		
* MX033633	PAVEMENT MESSAGE MARKING, EPOXY, TURN ARROW (INDIANA)	SQ M	7.4	0	0	0	0	7.4	0	0	0	0		
* MX033634	SNOWFLOWABLE RAISED PAVEMENT MARKER (INDIANA)	EACH	1162	0	0	0	0	1162	0	0	0	0		
* MX033678	LINE, EPOXY, BROKEN, WHITE, 200 MM (INDIANA)	METER	169	0	0	0	0	169	0	0	0	0		
* MX033665	WIM STATION, 10 LANE SLC (INDIANA)	L SUM	1	0	0	0	0	0	0	1	0	0		
* MX033635	SEWER OUTFALL SEPARATOR SYSTEM (INDIANA)	L SUM	1	0	0	0	0	1	0	0	0	0		
X0325176	CONCRETE FILLED STEEL POST	EACH	14	14	0	0	0	0	0	0	0	0		

- SPECIALTY ITEMS
- • STATE
- • • 100% INDIANA
- • • • 100% VILLAGE OF LANSING

REVISIONS	
NAME	DATE

ILLINOIS DEPARTMENT OF TRANSPORTATION
I-80/94/US 6
KINGERY-BORMAN EXPRESSWAY
BURNHAM ROAD TO US 41

SUMMARY OF QUANTITIES

SCALE: _____ DATE: 07/05

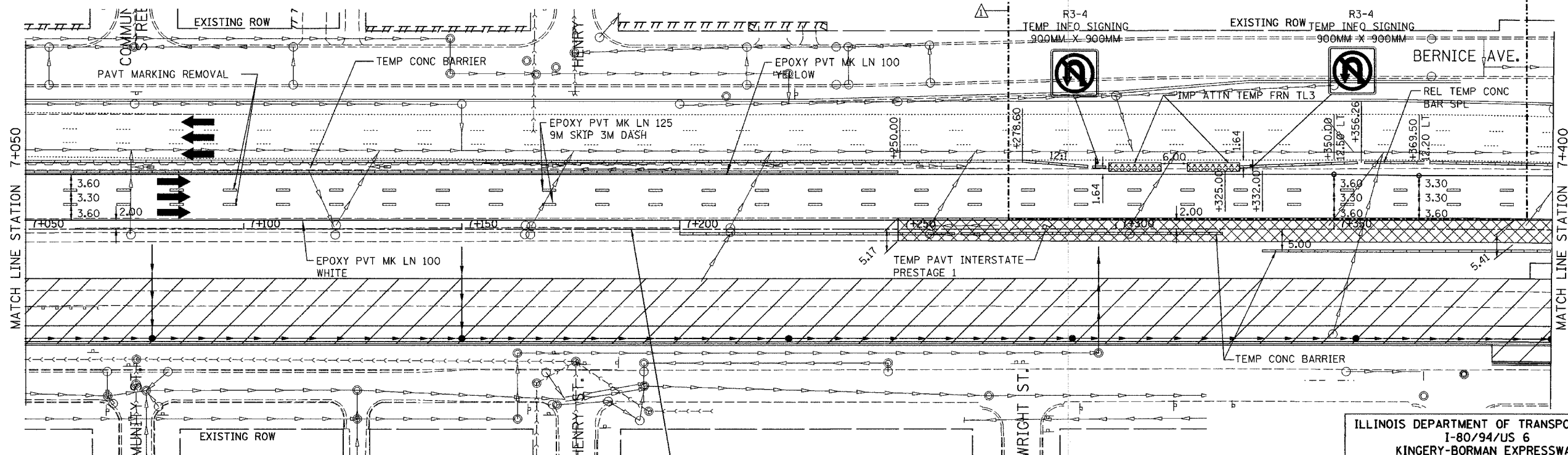
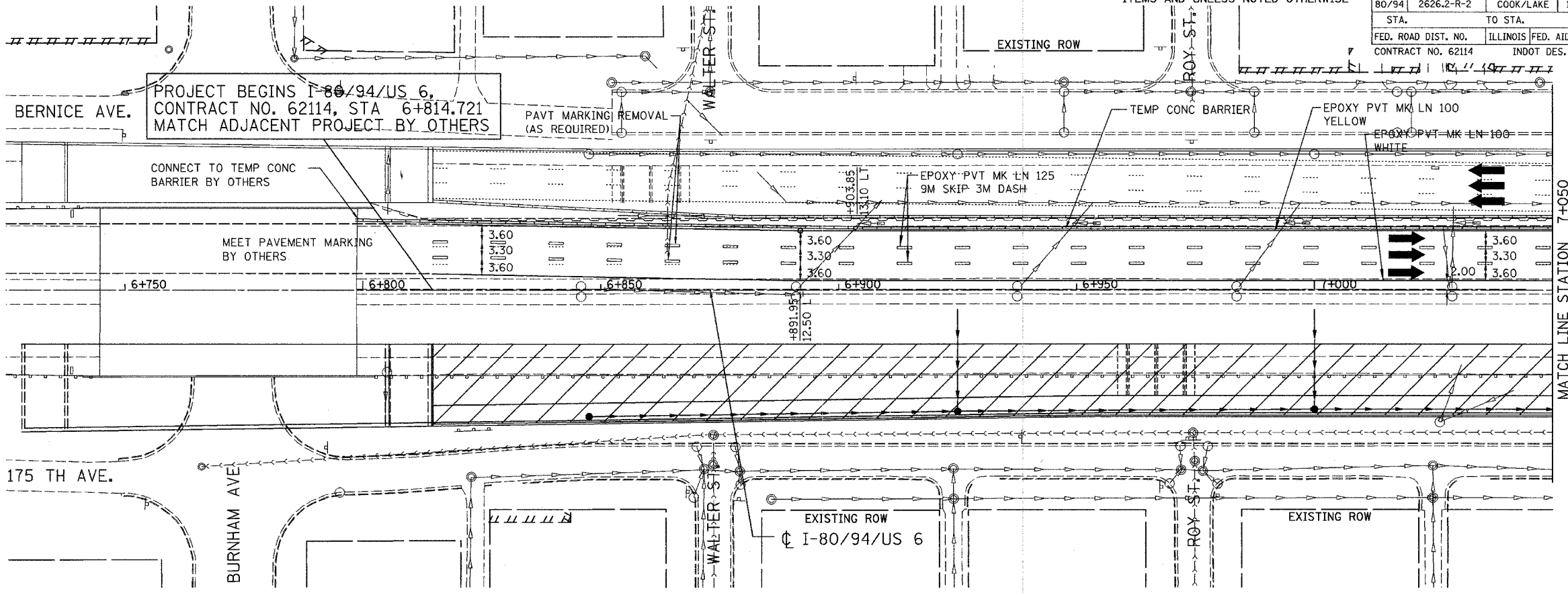
DRAWN BY: ACE/CAD
CHECKED BY: TAE

AMERICAN
CONSULTING ENGINEERS

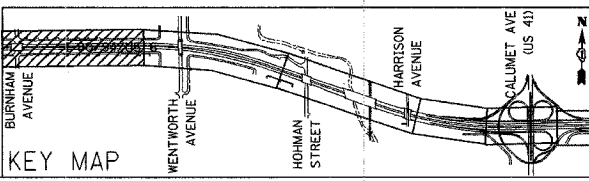
△ Rev. 12-5-05

F.A.I. RTE.	SECTION	COUNTY	TOTAL SHEETS	SHEET NO.
80/94	2626.2-R-2	COOK/LAKE	1207	194
STA.	TO STA.			
FED. ROAD DIST. NO.	ILLINOIS	FED. AID PROJECT		
CONTRACT NO. 62114	INDOT DES. NO. 0100987			

ALL DIMENSIONS IN METERS EXCEPT PAVT ITEMS AND UNLESS NOTED OTHERWISE



- NOTES:
1. SEE MOT TYPICAL SECTIONS FOR LOCATION AND LIMITS OF APPLICATION.
 2. EXTEND PROPOSED S.S. LATERALS AS FAR AS POSSIBLE TO CONNECT IN SUCCEEDING STAGES.
 3. SEE LAYOUT TABLES FOR OFFSETS TO MOT LANE ASSIGNMENTS.



REVISIONS	
NAME	DATE
REV. JBS	11-14-05

ILLINOIS DEPARTMENT OF TRANSPORTATION
I-80/94/US 6
KINGERY-BORMAN EXPRESSWAY
BURNHAM ROAD TO US 41
MAINTENANCE OF TRAFFIC
STAGE 1
STA. 6 + 814.721 TO STA. 7 + 400
SCALE 1:500 DRAWN BY ACE/CAD
DATE 07/05 CHECKED BY TAE

SIGNING SCHEDULE - GROUND MOUNTED SIGNS

ALL DIMENSIONS IN METERS EXCEPT PAY ITEMS AND UNLESS NOTED OTHERWISE

F.A.I. RTE. 80/94	SECTION 2626.2-R-2	COUNTY COOK/LAKE	TOTAL SHEETS 1207	SHEET NO. 362A
STA.		TO STA.		
FED. ROAD DIST. NO.		ILLINOIS FED. AID PROJECT		
CONTRACT NO. 62114		INDOT DES. NO. 0100987		

SIGN NO.	STATION	LT/RT	"AA" (M)	"BB" (M)	WIDTH (M)	DEPTH (M)	EXIST TO REMAIN (Y)	ILLINOIS SIGN PANELS		STEEL SIGN SUPPORT			WOOD SIGN SUPPORT		INDIANA SIGN PANELS			INDIANA STEEL SIGN SUPPORT				NOTES			
								M7200100 INSTALL TYPE 1 (SQ. M)	M7200200 INSTALL TYPE 2 (SQ. M)	P1 (M)	M7280100 PAY LENGTH (M)	TUBULAR TF SIN POST (EACH)	P1 (M)	M7300100 PAY LENGTH (M)	M73700100 REM CONC FDN-GR MT SUPPORT (M)	M73700200 REM CONC FDN-GR MT (M)	S EN LEN LEG 203 (IN) (SQ M)	S EN LEN LEG 254 (IN) (SQ M)	S EN LEN LEG 318 (IN) (SQ M)	P1 (M)	SIGN POST WOOD (IN) (M.)		SIGN POST SQ T1 REINF AN BASE (M.)	SIGN POST SQ T2 REINF AN BASE (M.)	SIGN POST SQ T1 UNREINF AN BASE (M.)
IL80-53NW	6+949	RT			1.05	0.45		0.47																MOUNTED TO NOISE WALL	
IL80-53ANW					1.05	0.45		0.47																	MOUNTED TO BACK OF NOISE WALL
IL80-54NW					1.20	0.30		0.36																	MOUNTED TO NOISE WALL DOOR
IL80-54ANW					1.20	0.30		0.36																	MOUNTED TO NOISE WALL DOOR
IL80-55NW	6+973	LT			1.05	0.45		0.47																	MOUNTED TO NOISE WALL
IL80-55ANW					1.05	0.45		0.47																	MOUNTED TO BACK OF NOISE WALL
IL80-56NW					0.45	0.30		0.14																	MOUNTED TO NOISE WALL DOOR
IL80-56ANW					0.45	0.30		0.14																	MOUNTED TO NOISE WALL DOOR
IL80-57NW	7+074	RT			1.05	0.45		0.47																	MOUNTED TO NOISE WALL
IL80-57ANW					1.05	0.45		0.47																	MOUNTED TO BACK OF NOISE WALL
IL80-58NW					1.20	0.30		0.36																	MOUNTED TO NOISE WALL DOOR
IL80-58ANW					1.20	0.30		0.36																	MOUNTED TO NOISE WALL DOOR
IL80-59NW	7+926	LT			1.05	0.45		0.47																	MOUNTED TO NOISE WALL
IL80-59ANW					1.05	0.45		0.47																	MOUNTED TO BACK OF NOISE WALL
IL80-60NW					0.45	0.30		0.14																	MOUNTED TO NOISE WALL DOOR
IL80-60ANW					0.45	0.30		0.14																	MOUNTED TO NOISE WALL DOOR
TOTALS								22.21	4.32			4.00	0.00	0.00	0.00	0.00	0.00	0.00	0.00	0.00	0.00	0.00	0.00	0.00	

NOTE:
 "AA" = DISTANCE FROM EDGE OF TRAVELED WAY
 "BB" = DISTANCE FROM BOTTOM OF SIGN TO PAVEMENT
 SIGN LOCATION SUBJECT TO MINOR RELOCATION IN FIELD AT TIME OF CONSTRUCTION AS DIRECTED BY THE ENGINEER

ILLINOIS DEPARTMENT OF TRANSPORTATION
 I-80/94/US 6
 KINGERY-BORMAN EXPRESSWAY
 BURNHAM ROAD TO US 41

REVISIONS	
NAME	DATE
NEW SHEET - JBS	11-14-05

SIGNING SCHEDULE

SCALE: _____ DATE: 07/05

DRAWN BY ACE/CAD
 CHECKED BY TAE



SIGNING SCHEDULE - GROUND MOUNTED SIGNS

ALL DIMENSIONS IN METERS EXCEPT PAY ITEMS AND UNLESS NOTED OTHERWISE

F.A.I. RTE. 80/94	SECTION 2626.2-R-2	COUNTY COOK/LAKE	TOTAL SHEETS 1207	SHEET NO. 364
STA. FED. ROAD DIST. NO.		TO STA. ILLINOIS FED. AID PROJECT		
CONTRACT NO. 62114		INDOT DES. NO. 0100987		

SIGN NO.	STATION	LT/RT	"AA" (M) "BB" (M)		WIDTH (M)	DEPTH (M)	EXIST TO REMAIN (Y)	ILLINOIS SIGN PANELS		STEEL SIGN SUPPORT			WOOD SIGN SUPPORT		INDIANA SIGN PANELS			INDIANA STEEL SIGN SUPPORT				NOTES																					
								M7200100 INSTALL TYPE 1 (SQ. M)	M7200200 INSTALL TYPE 2 (SQ. M)	P1 (M)	M7280100 PAY LENGTH (M)	TUBULAR TF SIN POST (EACH)	P1 (M)	M7300100 PAY LENGTH (M)	M73700100 REM CONC FDN-GR MT SUPPORT (M)	M73700200 REM CONC FDN-GR MT SUPPORT (M)	S EN LEN LEG 203 (IN) (SQ M)	S EN LEN LEG 254 (IN) (SQ M)	S EN LEN LEG 318 (IN) (SQ M)	P1 (M)	SIGN POST WOOD (IN) (M.)		SIGN POST SQ T1 REINF AN BASE (M.)	SIGN POST SQ T2 REINF AN BASE (M.)	SIGN POST SQ T1 UNREINF AN BASE (M.)	SIGN POST SQ T2 UNREINF AN BASE (M.)																	
IGDE-01	9+063	RT					N									2	2																					MOUNTED ON FRONTSIDE OF NOISE WALL					
IN80-63NW	9+073	LT			2.00	0.45																	0.9															MOUNTED ON BACKSIDE OF NOISE WALL					
IN80-64NW					2.00	0.45																	0.9																COVER FOR ACCESS HOLE				
IN80-65NW					0.60	0.45																	0.27															MOUNTED ON FRONTSIDE OF NOISE WALL					
IN80-66NW					0.60	0.60																	0.36															MOUNTED ON FRONTSIDE OF NOISE WALL					
IN80-67NW					0.60	0.60																	0.36															MOUNTED ON FRONTSIDE OF NOISE WALL					
IN80-68NW					0.60	0.60																	0.36															MOUNTED ON BACKSIDE OF NOISE WALL					
IN80-69NW					0.60	0.60																	0.36															MOUNTED ON BACKSIDE OF NOISE WALL					
IN80-70TS	9+079	CL			1.50	0.38																	0.563															MOUNTED ON BACKSIDE OF IN80-70TS					
IN80-71TS					1.50	0.38																	0.563																	MOUNTED ON BACKSIDE OF IN80-70TS			
IN80-72WP	9+103	LT	3.48	2.1	1.20	1.20																				5.5	5.5															MOUNTED ON BACKSIDE OF NOISE WALL	
IN80-73WP	9+138	LT	1.80	2.1	1.20	1.20																				5.5	5.5													MOUNTED ON FRONTSIDE OF NOISE WALL			
IN80-74TS	9+240	CL			1.50	0.38																																	MOUNTED ON FRONTSIDE OF NOISE WALL				
IN80-75TS					1.50	0.38																																	MOUNTED ON FRONTSIDE OF NOISE WALL				
IN80-76TS	9+197	RT	22.18	2.1	1.80	1.80																																	MOUNTED ON BACKSIDE OF NOISE WALL				
IN80-77TS	9+401	CL			1.50	0.38																																	MOUNTED ON BACKSIDE OF NOISE WALL				
IN80-78TS					1.50	0.38																																		MOUNTED ON BACKSIDE OF NOISE WALL			
IN80-79TS	9+562	CL			1.50	0.38																																	MOUNTED ON BACKSIDE OF NOISE WALL				
IN80-80TS					1.50	0.38																																		MOUNTED ON BACKSIDE OF NOISE WALL			
IN80-81TS	9+723	CL			1.50	0.38																																	MOUNTED ON BACKSIDE OF NOISE WALL				
IN80-82TS					1.50	0.38																																		MOUNTED ON BACKSIDE OF NOISE WALL			
IN80-83NW	8+782	RT			1.05	0.45																																	MOUNTED ON BACKSIDE OF NOISEWALL				
IN80-84NW					1.05	0.45																																		MOUNTED ON FRONTSIDE OF NOISEWALL			
IN80-85NW					1.05	0.45																																		MOUNTED ON FRONTSIDE OF NOISEWALL			
IN80-86NW					1.05	0.45																																		MOUNTED ON FRONTSIDE OF NOISEWALL			
IN80-87NW					1.20	0.30																																		MOUNTED ON NOISEWALL DOOR			
IN80-88NW					1.20	0.30																																		MOUNTED ON NOISEWALL DOOR			
IN80-89NW	8+727	LT			1.05	0.45																																	MOUNTED ON BACKSIDE OF NOISEWALL				
IN80-90NW					1.05	0.45																																		MOUNTED ON FRONTSIDE OF NOISEWALL			
IN80-91NW					1.05	0.45																																		MOUNTED ON FRONTSIDE OF NOISEWALL			
IN80-92NW					1.05	0.45																																		MOUNTED ON FRONTSIDE OF NOISEWALL			
IN80-93NW					1.20	0.30																																		MOUNTED ON NOISEWALL DOOR			
IN80-94NW					1.20	0.30																																		MOUNTED ON NOISEWALL DOOR			
TOTALS								0.00	0.00			8.00		0.00		2.00	2.00	0.00	28.99	30.18			27.30	0.00	0.00	0.00	0.00																



NOTE:
 "AA" = DISTANCE FROM EDGE OF TRAVELED WAY
 "BB" = DISTANCE FROM BOTTOM OF SIGN TO PAVEMENT

 SIGN LOCATION SUBJECT TO MINOR RELOCATION IN FIELD
 AT TIME OF CONSTRUCTION AS DIRECTED BY THE ENGINEER

ILLINOIS DEPARTMENT OF TRANSPORTATION
 I-80/94/US 6
 KINGERY-BORMAN EXPRESSWAY
 BURNHAM ROAD TO US 41

REVISIONS		
REV.	NAME	DATE
△ REV. -	JBS	11-14-05

SCALE _____ DATE 07/05 _____ DRAWN BY ACE/CAD CHECKED BY TAE

AMERICAN
CONSULTING ENGINEERS

\\s01n0073\11\11\07\2005\02-30-05.PM