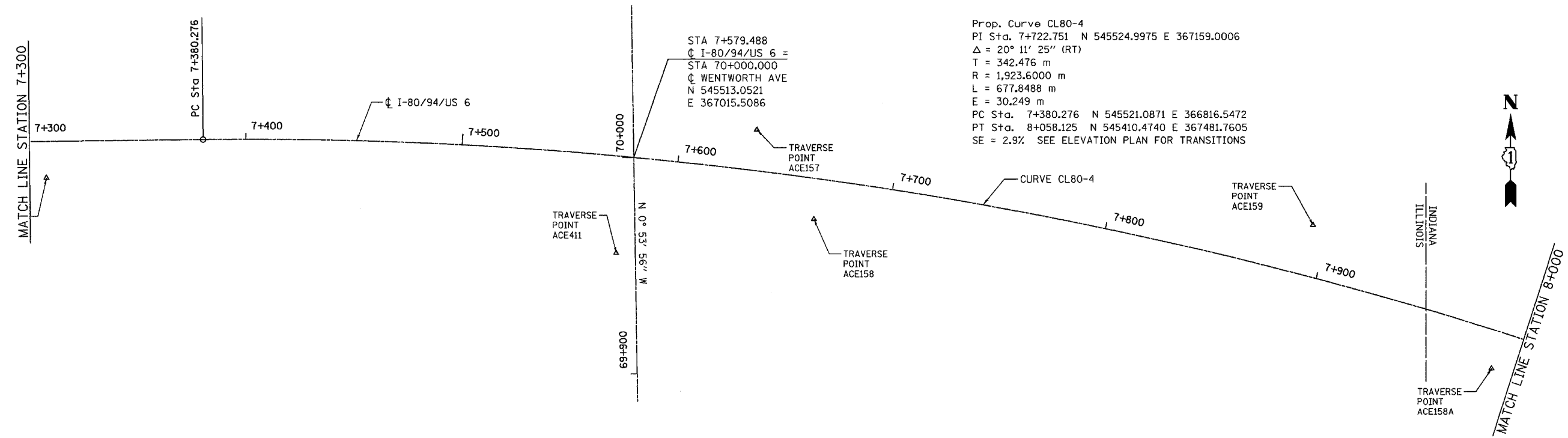
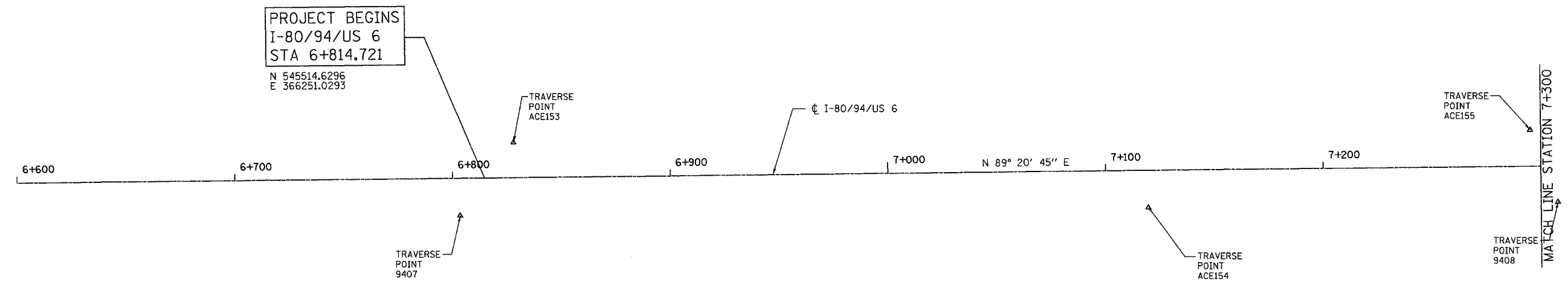


ALL DIMENSIONS IN METERS EXCEPT PAVEMENT ITEMS AND UNLESS NOTED OTHERWISE

F.A.I. RTE.	SECTION	COUNTY	TOTAL SHEETS	SHEET NO.
80/94	2626.2-R-2	COOK/LAKE	1207	44
STA.		TO STA.		
FED. ROAD DIST. NO.		ILLINOIS	FED. AID PROJECT	
CONTRACT NO. 62114		INDOT DES. NO. 0100987		



Prop. Curve CL80-4
 PI Sta. 7+722.751 N 545524.9975 E 367159.0006
 $\Delta = 20^\circ 11' 25''$ (RT)
 T = 342.476 m
 R = 1,923.6000 m
 L = 677.8488 m
 E = 30.249 m
 PC Sta. 7+380.276 N 545521.0871 E 366816.5472
 PT Sta. 8+058.125 N 545410.4740 E 367481.7605
 SE = 2.9% SEE ELEVATION PLAN FOR TRANSITIONS



REVISIONS	
NAME	DATE

ILLINOIS DEPARTMENT OF TRANSPORTATION
 I-80/94/US 6
 KINGERY-BORMAN EXPRESSWAY
 BURNHAM ROAD TO US 41
ALIGNMENT PLAN
 I-80/94/US 6
STA. 6+850 TO STA. 8+000
 SCALE 1:1000 DRAWN BY ACE/CAD
 DATE 07/05 CHECKED BY TAE