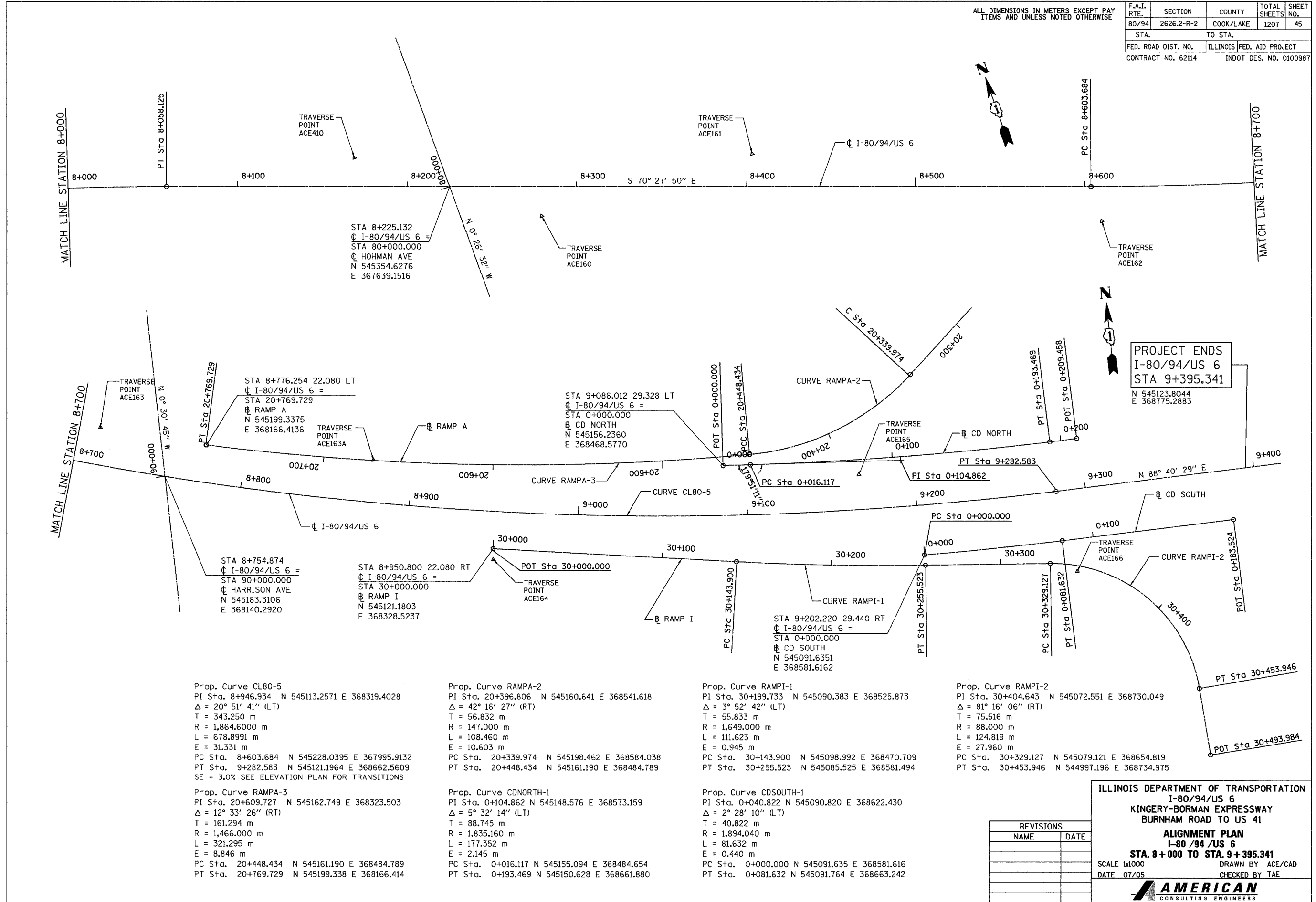


ALL DIMENSIONS IN METERS EXCEPT PAY ITEMS AND UNLESS NOTED OTHERWISE

F.A.I. RTE.	SECTION	COUNTY	TOTAL SHEETS	SHEET NO.
80/94	2626.2-R-2	COOK/LAKE	1207	45
STA.	TO STA.			
FED. ROAD DIST. NO.	ILLINOIS	FED. AID PROJECT		
CONTRACT NO. 62114	INDOT DES. NO. 0100987			



**PROJECT ENDS**  
**I-80/94/US 6**  
**STA 9+395.341**  
 N 545123.8044  
 E 368775.2883

Prop. Curve CL80-5  
 PI Sta. 8+946.934 N 545113.2571 E 368319.4028  
 $\Delta = 20^\circ 51' 41''$  (LT)  
 T = 343.250 m  
 R = 1,864.6000 m  
 L = 678.8991 m  
 E = 31.331 m  
 PC Sta. 8+603.684 N 545228.0395 E 367995.9132  
 PT Sta. 9+282.583 N 545121.1964 E 368662.5609  
 SE = 3.0% SEE ELEVATION PLAN FOR TRANSITIONS

Prop. Curve RAMP A-3  
 PI Sta. 20+609.727 N 545162.749 E 368323.503  
 $\Delta = 12^\circ 33' 26''$  (RT)  
 T = 161.294 m  
 R = 1,466.000 m  
 L = 321.295 m  
 E = 8.846 m  
 PC Sta. 20+448.434 N 545161.190 E 368484.789  
 PT Sta. 20+769.729 N 545199.338 E 368166.414

Prop. Curve RAMP A-2  
 PI Sta. 20+396.806 N 545160.641 E 368541.618  
 $\Delta = 42^\circ 16' 27''$  (RT)  
 T = 56.832 m  
 R = 147.000 m  
 L = 108.460 m  
 E = 10.603 m  
 PC Sta. 20+339.974 N 545198.462 E 368584.038  
 PT Sta. 20+448.434 N 545161.190 E 368484.789

Prop. Curve CDNORTH-1  
 PI Sta. 0+104.862 N 545148.576 E 368573.159  
 $\Delta = 5^\circ 32' 14''$  (LT)  
 T = 88.745 m  
 R = 1,835.160 m  
 L = 177.352 m  
 E = 2.145 m  
 PC Sta. 0+016.117 N 545155.094 E 368484.654  
 PT Sta. 0+193.469 N 545150.628 E 368661.880

Prop. Curve RAMP I-1  
 PI Sta. 30+199.733 N 545090.383 E 368525.873  
 $\Delta = 3^\circ 52' 42''$  (LT)  
 T = 55.832 m  
 R = 1,649.000 m  
 L = 111.623 m  
 E = 0.945 m  
 PC Sta. 30+143.900 N 545098.992 E 368470.709  
 PT Sta. 30+255.523 N 545085.525 E 368581.494

Prop. Curve CDSOUTH-1  
 PI Sta. 0+040.822 N 545090.820 E 368622.430  
 $\Delta = 2^\circ 28' 10''$  (LT)  
 T = 40.822 m  
 R = 1,894.040 m  
 L = 81.632 m  
 E = 0.440 m  
 PC Sta. 0+000.000 N 545091.635 E 368581.616  
 PT Sta. 0+081.632 N 545091.764 E 368663.242

Prop. Curve RAMP I-2  
 PI Sta. 30+404.643 N 545072.551 E 368730.049  
 $\Delta = 81^\circ 16' 06''$  (RT)  
 T = 75.516 m  
 R = 88.000 m  
 L = 124.819 m  
 E = 27.960 m  
 PC Sta. 30+329.127 N 545079.121 E 368654.819  
 PT Sta. 30+453.946 N 544997.196 E 368734.975

REVISIONS	
NAME	DATE

ILLINOIS DEPARTMENT OF TRANSPORTATION  
 I-80/94/US 6  
 KINGERY-BORMAN EXPRESSWAY  
 BURNHAM ROAD TO US 41  
**ALIGNMENT PLAN**  
 I-80 /94 /US 6  
**STA. 8+000 TO STA. 9+395.341**  
 SCALE 1:1000 DRAWN BY ACE/CAD  
 DATE 07/05 CHECKED BY TAE

**AMERICAN**  
 CONSULTING ENGINEERS