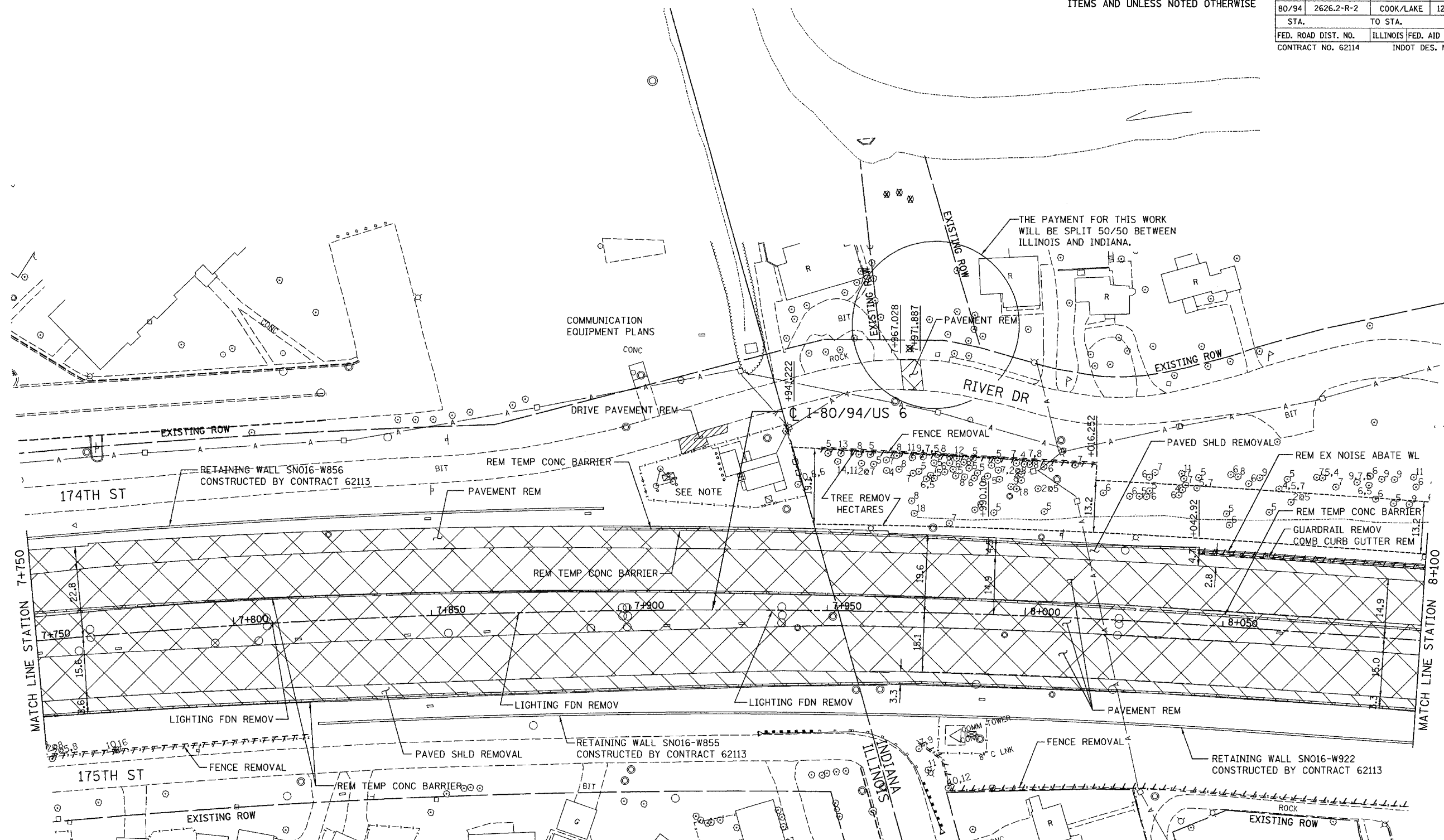


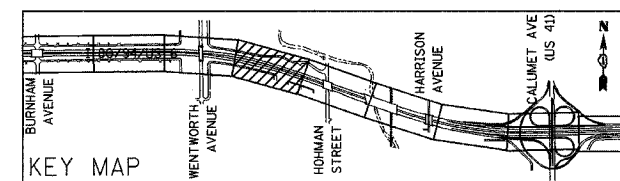
ALL DIMENSIONS IN METERS EXCEPT PAY ITEMS AND UNLESS NOTED OTHERWISE

|                     |                        |                  |              |           |
|---------------------|------------------------|------------------|--------------|-----------|
| F.A.I. RTE.         | SECTION                | COUNTY           | TOTAL SHEETS | SHEET NO. |
| 80/94               | 2626.2-R-2             | COOK/LAKE        | 1207         | 54        |
| STA.                | TO STA.                |                  |              |           |
| FED. ROAD DIST. NO. | ILLINOIS               | FED. AID PROJECT |              |           |
| CONTRACT NO. 62114  | INDOT DES. NO. 0100987 |                  |              |           |



- EXISTING LEGEND:**
- LIGHT POLE REMOVAL (BY CONTRACT 62664)
  - PAVEMENT REMOVAL
  - PAVED SHOULDER REMOVAL
  - APPROACH SLAB REMOVAL

NOTE: SEE ILLINOIS PUMP STATION EXISTING / PROPOSED PLAN FOR REMOVAL INFORMATION



| REVISIONS |      |
|-----------|------|
| NAME      | DATE |
|           |      |
|           |      |
|           |      |

ILLINOIS DEPARTMENT OF TRANSPORTATION  
 I-80/94/US 6  
 KINGERY-BORMAN EXPRESSWAY  
 BURNHAM ROAD TO US 41  
**EXISTING PLAN**  
 STA. 7+750 TO STA. 8+100  
 SCALE 1:500 DRAWN BY ACE/CAJ  
 DATE 07/05 CHECKED BY TAE