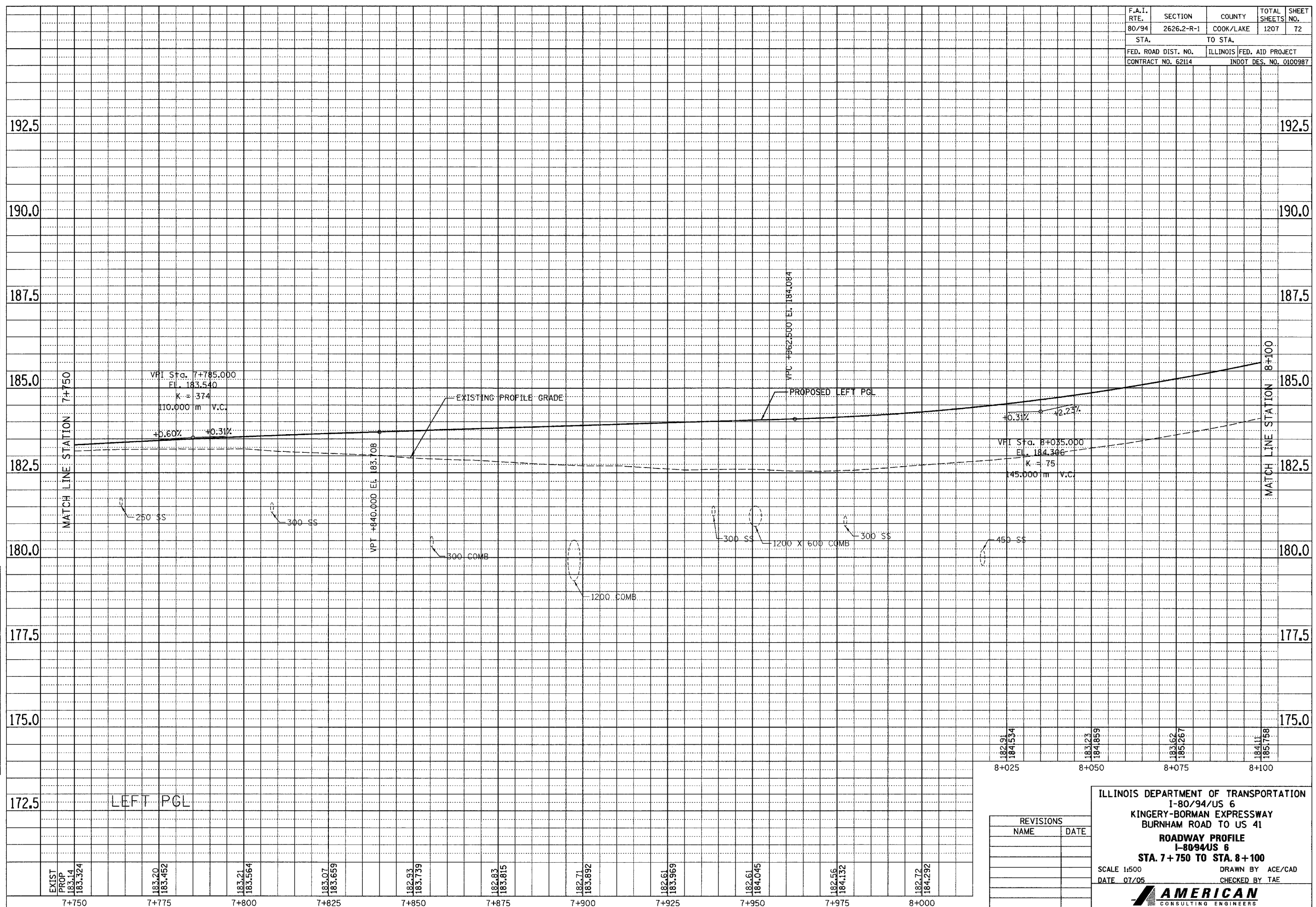


F.A.I. RTE. 80/94	SECTION 2626.2-R-1	COUNTY COOK/LAKE	TOTAL SHEETS 1207	SHEET NO. 72
STA.		TO STA.		
FED. ROAD DIST. NO.		ILLINOIS FED. AID PROJECT		
CONTRACT NO. 62114		INDOT DES. NO. 0100987		

FINAL SURVEY PLOTTED	BY	DATE
NOTE BOOK TEMPLATE NO.		
AREAS CHECKED		

ORIGINAL SURVEY PLOTTED	BY	DATE
NOTE BOOK TEMPLATE NO.		
AREAS CHECKED		



LEFT PGL

EXIST PROP	183.20	183.21	183.07	182.93	182.83	182.71	182.61	182.56	182.72	
183.14	183.452	183.564	183.659	183.739	183.815	183.892	183.969	184.045	184.292	
7+750	7+775	7+800	7+825	7+850	7+875	7+900	7+925	7+950	7+975	8+000

182.91	184.1534	183.23	184.859	183.62	185.267	184.11	185.758
8+025	8+050	8+075	8+100				

REVISIONS	
NAME	DATE

ILLINOIS DEPARTMENT OF TRANSPORTATION  
 I-80/94/US 6  
 KINGERY-BORMAN EXPRESSWAY  
 BURNHAM ROAD TO US 41  
**ROADWAY PROFILE**  
 I-80/94/US 6  
**STA. 7+750 TO STA. 8+100**  
 SCALE 1:500  
 DATE 07/05  
 DRAWN BY ACE/CAD  
 CHECKED BY TAE  
**AMERICAN**  
 CONSULTING ENGINEERS