
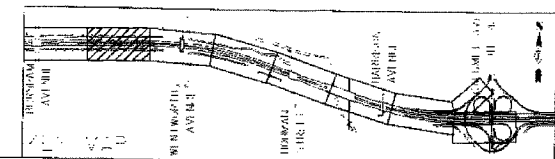
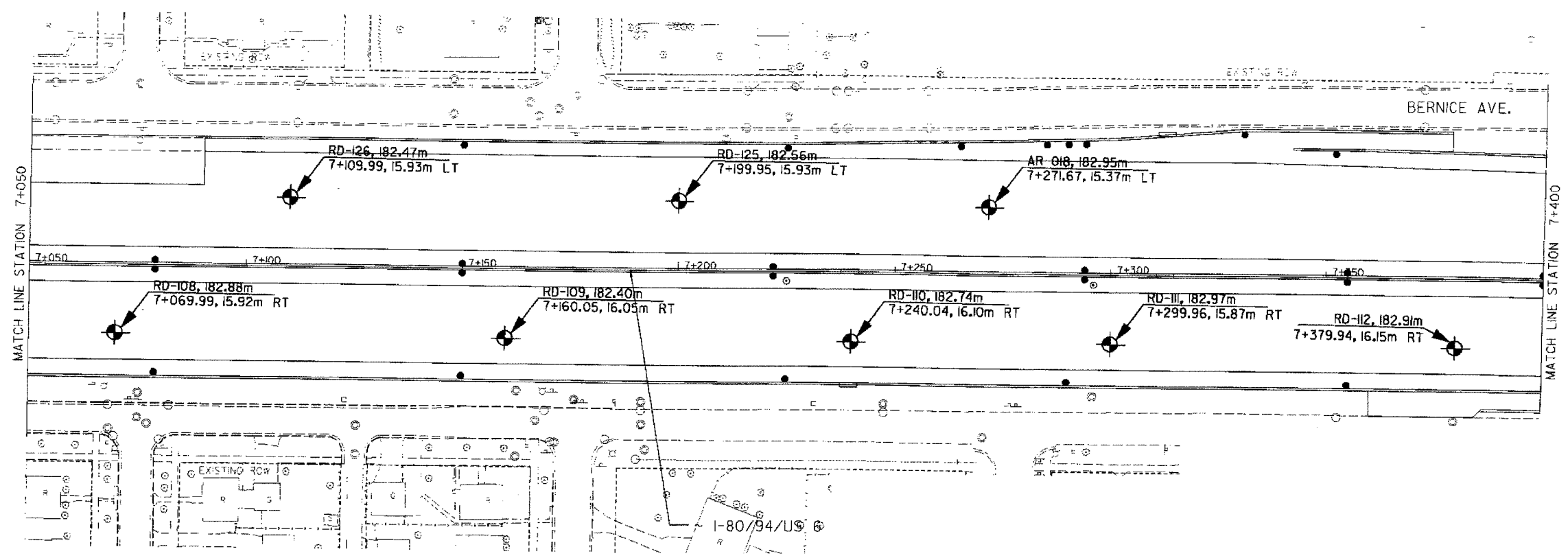


F.A.I. 80/94 (KINGERY EXPRESSWAY) BORING LOCATION		ILLINOIS DEPARTMENT OF TRANSPORTATION, COOK COUNTY	
HORIZ SCALE: 1/4" = 10'	VERT SCALE: 1" = 10'	DRAWN BY: M.S.	CHECKED BY: J.L.
 Wang Engineering, Inc. Geo-Environmental Engineers 145 Main Street Lombard, IL 60148 630-953-9928		ALL DIMENSIONS IN METERS EXCEPT PAY ITEMS AND UNLESS NOTED OTHERWISE	
BASED ON DRAWINGS PREPARED BY AMERICAN CONSULTING ENGINEERS 255-08-04			



REVISIONS	
NAME	DATE

ILLINOIS DEPARTMENT OF TRANSPORTATION  
 I-80/94/US 6  
 KINGERY-BORMAN EXPRESSWAY  
 BURNHAM ROAD TO US 41

STA. 7+050 TO STA. 7+400  
 SCALE  
 DATE 08/04  
 DRAWN BY ACE/CAD  
 CHECKED BY