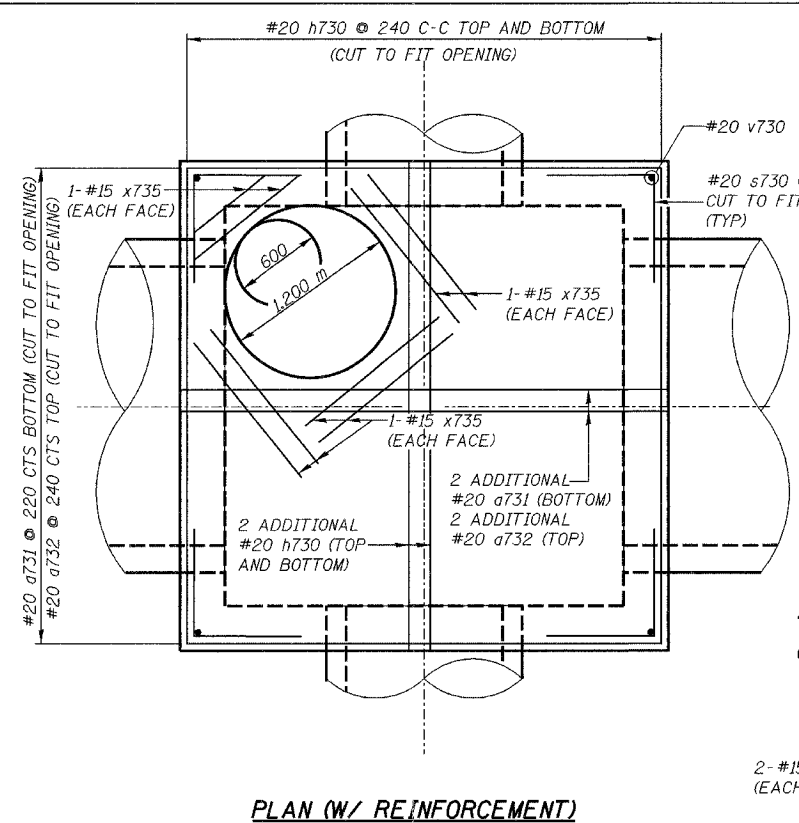
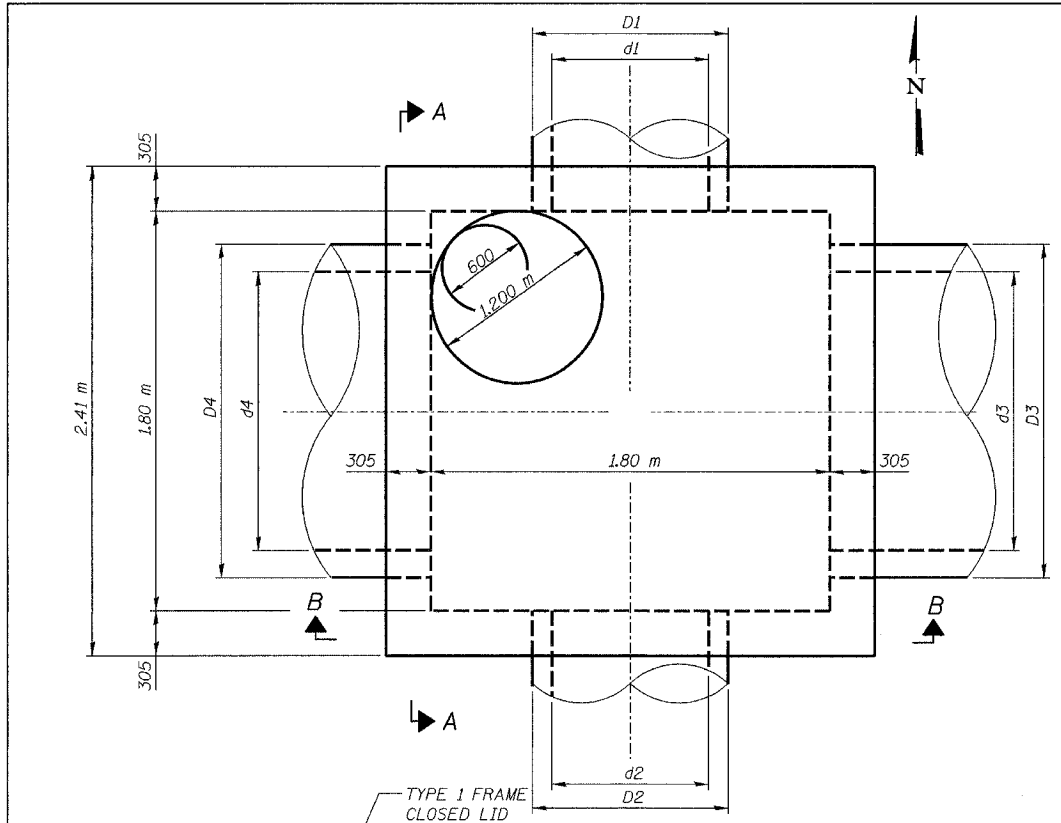
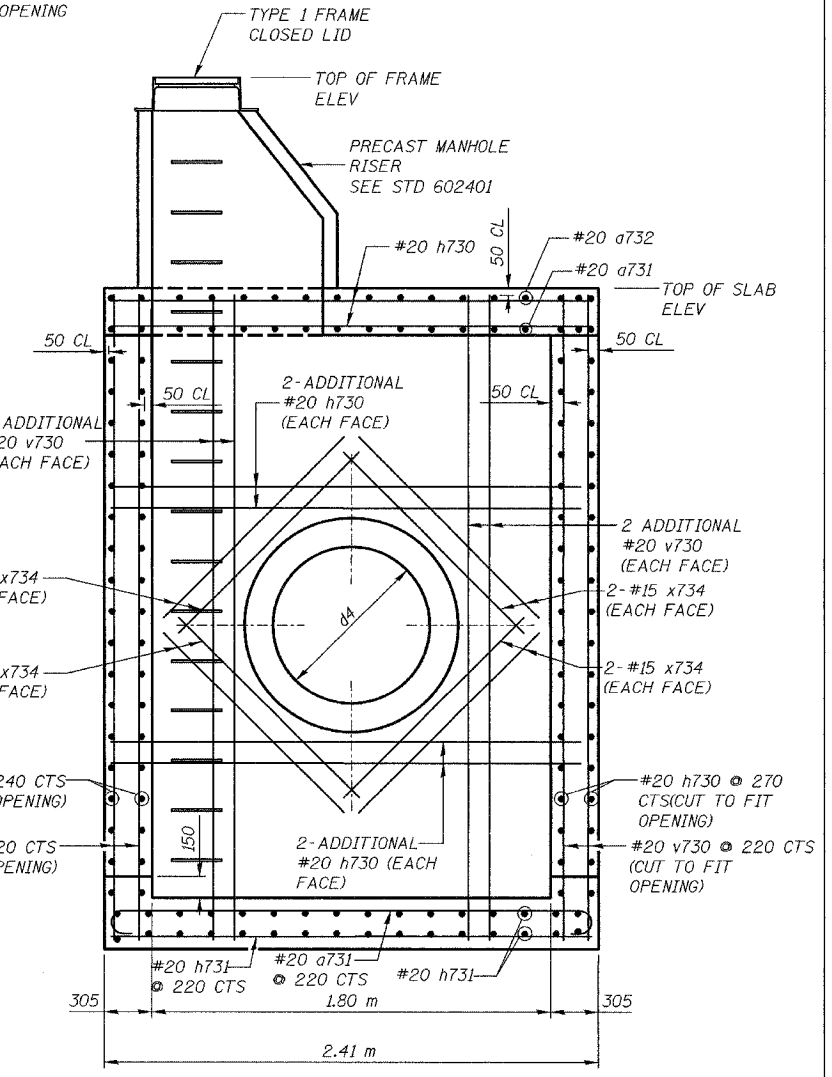


F.A.I. RTE. 80/94	SECTION 2626.2-R-2	COUNTY COOK/LAKE	TOTAL SHEETS 1207	SHEET NO. 288
STA. FED. ROAD DIST. NO.		TO STA. ILLINOIS FED. AID PROJECT		
CONTRACT NO. 62114		INDOT DES. NO. 0100987		

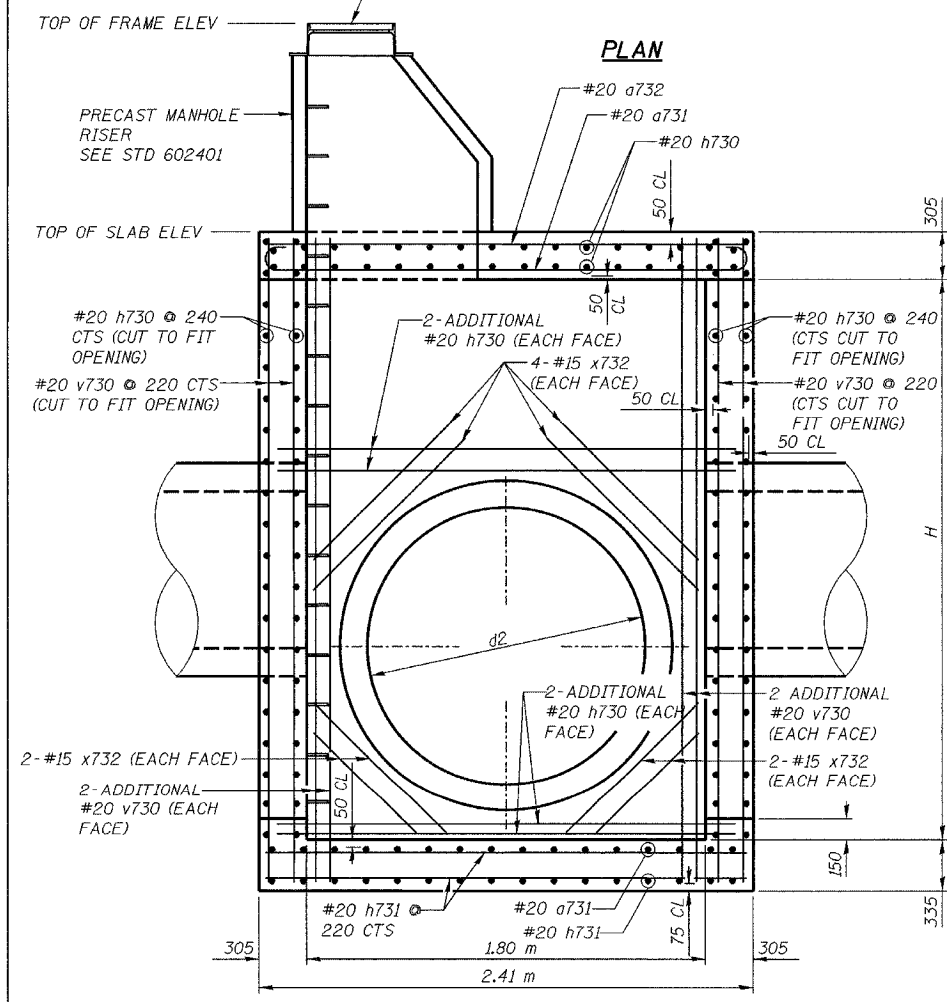
ALL DIMENSIONS IN MILLIMETERS EXCEPT  
PAY ITEMS AND UNLESS NOTED OTHERWISE



**PLAN (W/ REINFORCEMENT)**



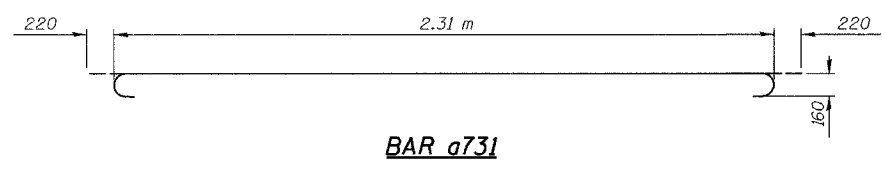
**SECTION A-A**



**SECTION B-B**

**BAR LIST**

BAR	SIZE	STR NO	A25	STR NO	A38	Shape
		NO.	LENGTH(m)	NO.	LENGTH(m)	
a731	#20	26	2.75	26	2.75	—
a732	#20	14	2.31	14	2.31	—
h730	#20	124	2.31	100	2.31	—
h731	#20	36	2.26	36	2.26	—
s730	#20	40	1.50	32	1.50	┌
v730	#20	128	2.03	128	1.52	—
x731	#15	16	0.60	16	0.60	—
x732	#15	16	1.13	N/A	N/A	—
x733	#15	16	1.65	16	1.65	—
x734	#15	16	1.13	16	1.65	—
x735	#15	16	1.40	16	1.40	—



**BAR a731**

**STRUCTURE DETAILS AND DIMENSIONS**

STR. NO.	LOCATION	PIPE 1 (N)		PIPE 2 (S)		PIPE 3 (E)		PIPE 4 (W)		T/FRAME. ELEV	T/SLAB ELEV	HEIGHT "H"				
		d1	INVERT	d2	INVERT	d3	INVERT	d4	INVERT							
A25	7+296.00, 2.35 m RT	300	181.570	402	750	179.950	928	1200	179.950	1454	750	179.955	928	183.698	182.278	2.15
A38	7+455.00, 2.28 m RT	300	180.604	402	-	-	-	1200	179.759	1454	1200	179.759	1454	183.218	181.577	1.64

FURNISH AND INSTALL CAST  
IRON STEPS, STD 602701

**DESIGN STRESSES**

CONCRETE  $f'_c = 24 \text{ MPa}$   
REINFORCEMENT  $f_y = 400 \text{ MPa}$

**REVISIONS**

NAME	DATE

ILLINOIS DEPARTMENT OF TRANSPORTATION  
I-80/94/US 6  
KINGERY-BORMAN EXPRESSWAY  
BURNHAM ROAD TO US 41

**JUNCTION CHAMBER NO. 4**

SCALE NTS  
DATE 07/05

DRAWN BY ACE/CAD  
CHECKED BY TAE

