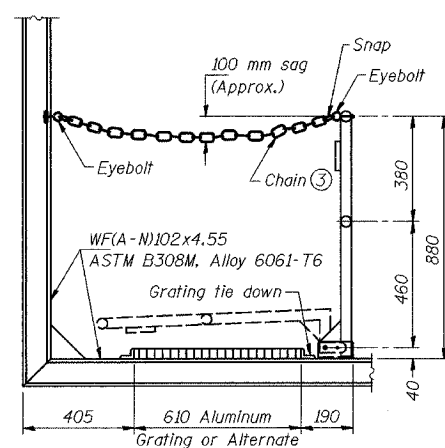


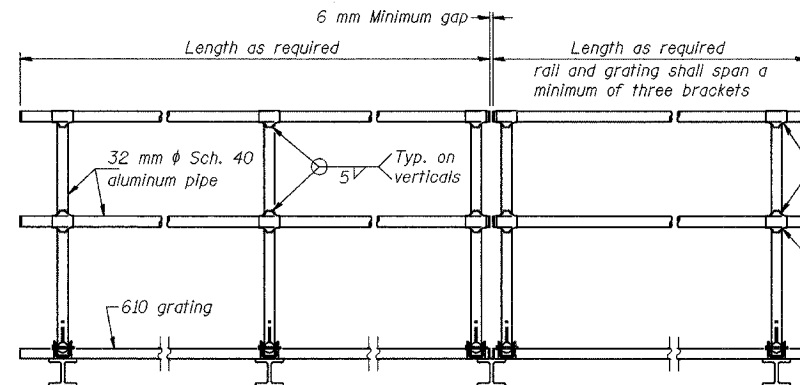
ALL DIMENSIONS IN MILLIMETERS EXCEPT  
PAY ITEMS AND UNLESS NOTED OTHERWISE

F.A.I. RTE.	SECTION	COUNTY	TOTAL SHEETS	SHEET NO.
80/94	2626.2-R-2	COOK/LAKE	1207	382
STA.		TO STA.		
FED. ROAD DIST. NO.	ILLINOIS FED. AID PROJECT			
CONTRACT NO. 62114	INDOT DES. NO. 0100987			



**SIDE ELEVATION**

(Showing safety chain w/o sign)

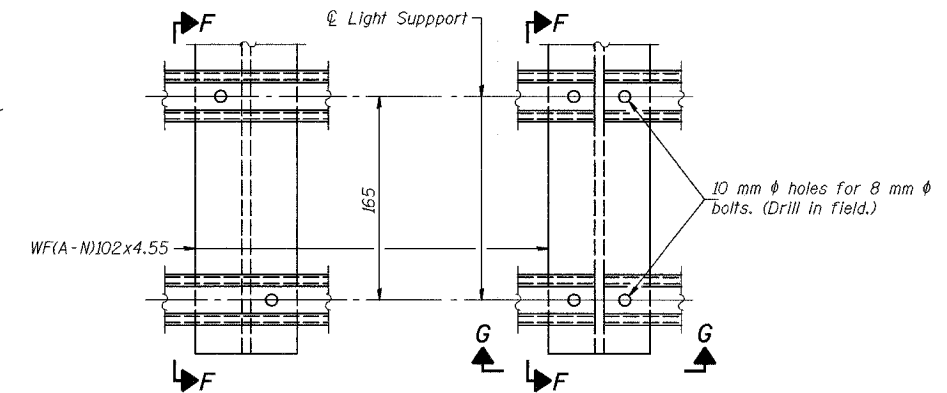


**FRONT ELEVATION**

**HANDRAIL DETAILS**

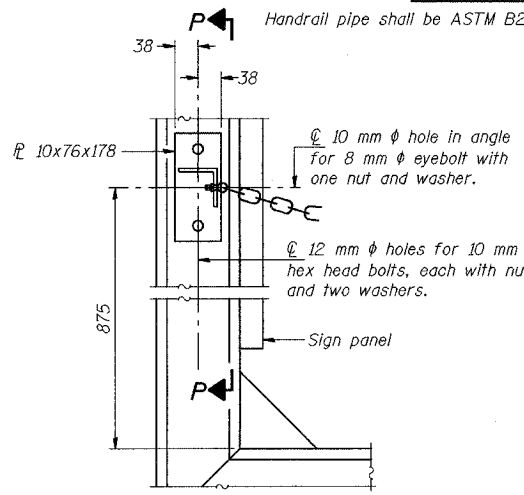
① Install standard force-fit end caps or weld 3 mm end plates with 3 mm c.f.w. and grind smooth. (All rail ends)

② Horizontal handrail member shall be continuous thru fitting. Provide 12 mm  $\phi$  hole in fitting for 10 mm  $\phi$  bolt. Field drill 12 mm  $\phi$  hole in horizontal rail member. Provide locknut and two stainless steel washers for bolt. (Use 8 mm eyebolts in 12 mm  $\phi$  holes on top rail at ends only.)



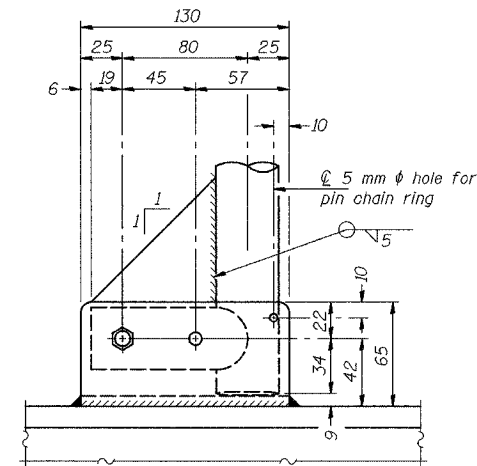
**DETAIL F**

**DETAIL G**



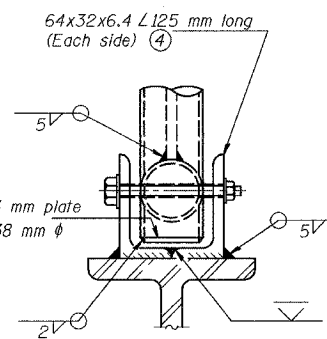
**ALTERNATE SAFETY CHAIN ATTACHMENT**

(With Sign Present)  
Items not shown same as "Side Elevation" of "Handrail Details"



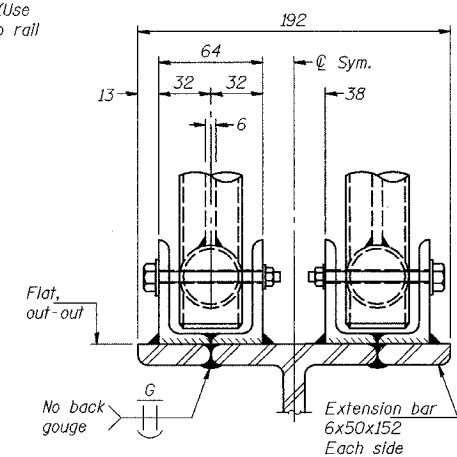
**SIDE ELEVATION**

Drill and ream for 10 mm  $\phi$  stainless steel bolt with hexagon locknut and two stainless steel washers.  
Drill 8 mm  $\phi$  hole for 6 mm ring-grip quick release self-locking stainless steel pin



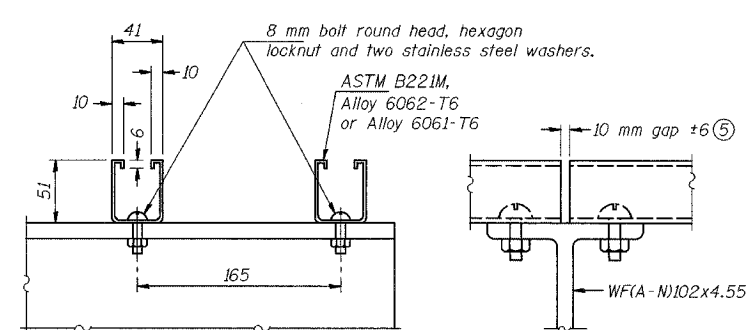
**FRONT ELEVATION**

See "ELEVATION" at right for dimensions.



**ELEVATION AT HANDRAIL JOINT**

Details not shown same as "FRONT ELEVATION"

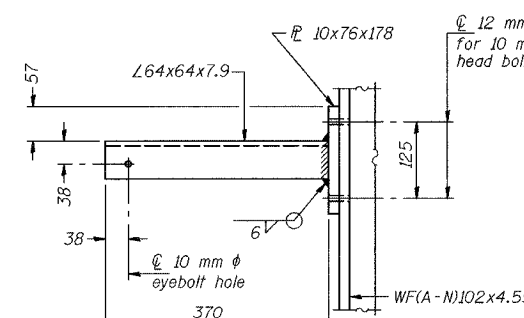


**SECTION F-F**

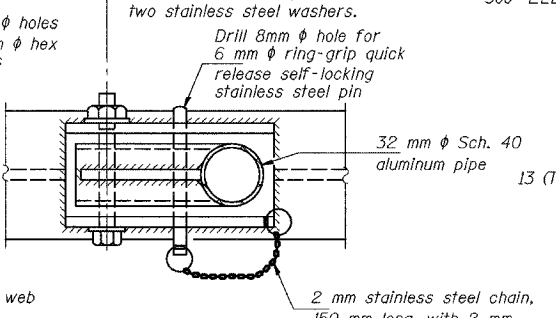
**SECTION G-G**

**LIGHTING FIXTURE MOUNTS (IF REQUIRED)**

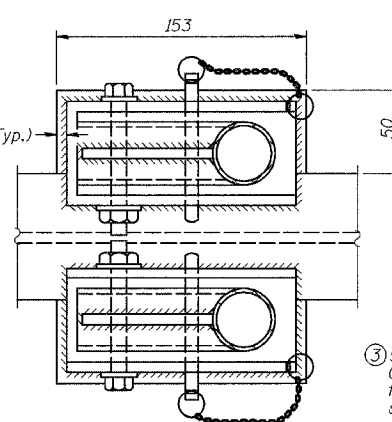
⑤ Field cut ends of light support channels shall be free of burrs or hazardous projections and coated with zinc-rich primer or equivalent.



**SECTION P-P**

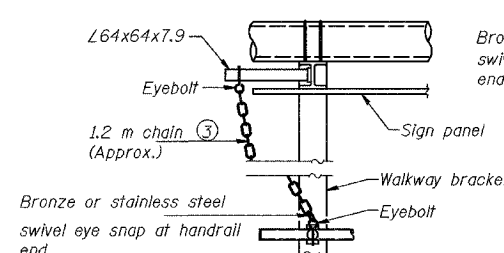


**PLAN  
DETAIL E HANDRAIL HINGE**



**PLAN AT HANDRAIL JOINT**

Details not shown same as "PLAN"

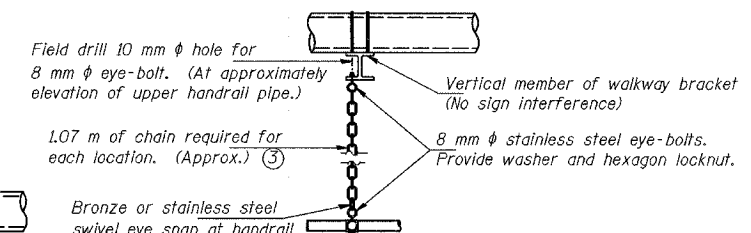


**ALTERNATE SAFETY CHAIN ATTACHMENT**

Details not shown similar to "Safety Chain" Details (Walkway omitted for clarity)

③ 5 mm galvanized steel chain, approximately 40 links per meter. Chain to be hot dip galvanized after manufacture and suitable for prolonged exterior exposure. Alternate materials may be substituted with the Engineer's approval.

④ Extrusions may be used in lieu of the details shown, with approval of the Engineer.



**SAFETY CHAIN**

One required for each end of each walkway.

Note: All eyebolts, bolts, nuts and washers shall be stainless steel. For material, see General Notes.

NUMBER	REVISION	DATE

REVISIONS	
NAME	DATE

ILLINOIS DEPARTMENT OF TRANSPORTATION  
I-80/94/US 6  
KINGERY-BORMAN EXPRESSWAY  
BURNHAM ROAD TO US 41  
**OVERHEAD SIGN STRUCTURES  
ALUMINUM HANDRAIL DETAILS**

SCALE NONE  
DATE 07/05  
DRAWN BY ACE/CAD  
CHECKED BY TAE

