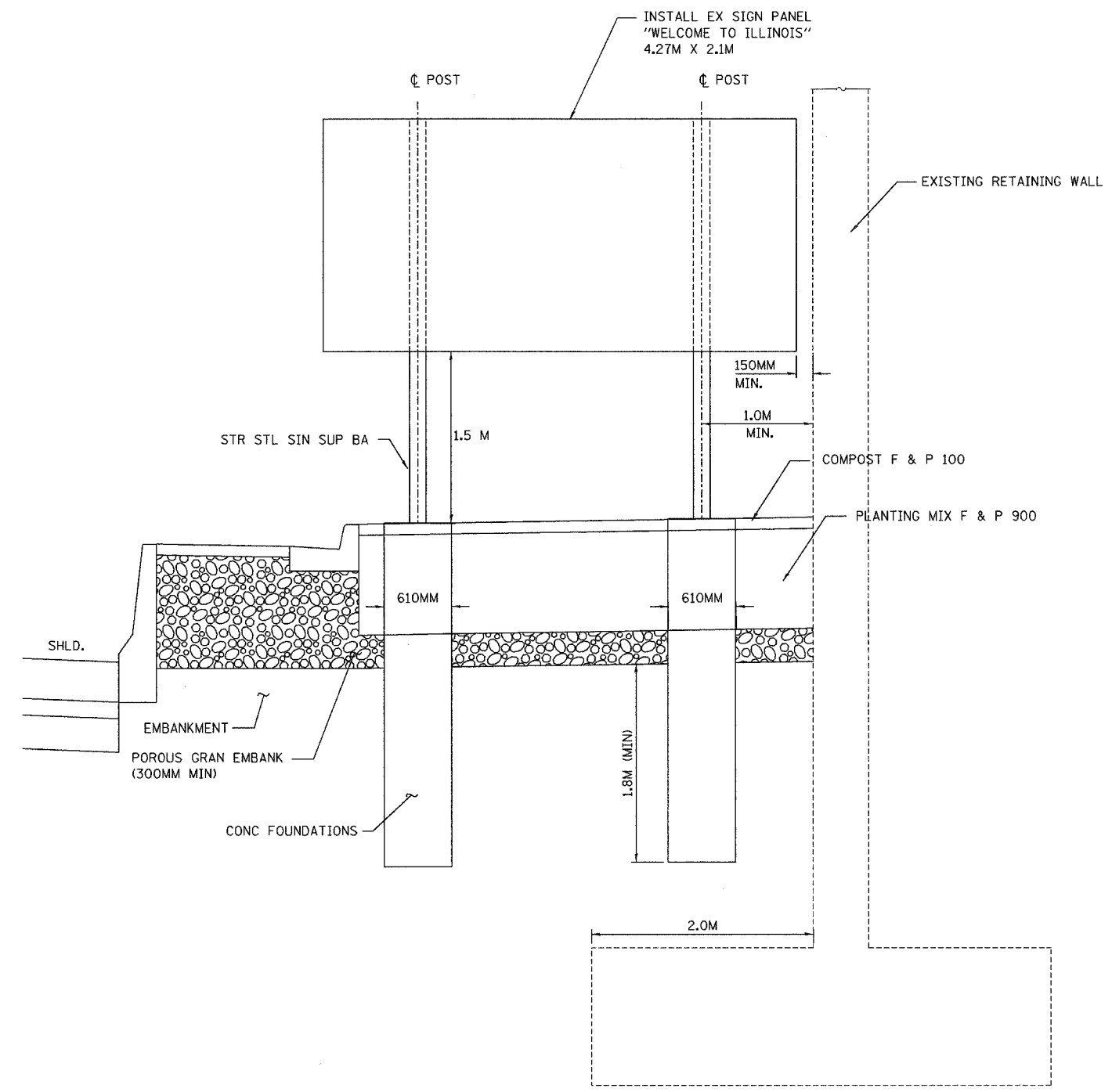


ALL DIMENSIONS IN METERS EXCEPT PAY ITEMS AND UNLESS NOTED OTHERWISE

F.A.I. RTE.	SECTION	COUNTY	TOTAL SHEETS	SHEET NO.
80/94	2626.2-R-2	COOK/LAKE	1207	388
STA.		TO STA.		
FED. ROAD DIST. NO.		ILLINOIS FED. AID PROJECT		
CONTRACT NO. 62114		INDOT DES. NO. 0100987		



**NOTES:**

1. CONTRACTOR TO COORDINATE WITH CONNIE SHANAHAN (847) 705-4501 FOR INSTALLATION OF EXISTING "WELCOME TO ILLINOIS" SIGN.
2. EMBANKMENT MATERIAL BEHIND RETAINING WALL MAY BE GRANULAR EMBANKMENT. THE CONTRACTOR SHALL VERIFY FOUNDATION NEEDS BEFORE INSTALLATION.
3. SEE BREAK-AWAY WIDE FLANGE STEEL SIGN POST DETAILS FOR FOUNDATION AND POST REQUIREMENTS.
4. SEE HIGHWAY STANDARD 720021 FOR SIGN PANEL MOUNTING DETAILS.

REVISIONS	
NAME	DATE

ILLINOIS DEPARTMENT OF TRANSPORTATION  
 I-80/94/US 6  
 KINGERY-BORMAN EXPRESSWAY  
 BURNHAM ROAD TO US 41

**WELCOME TO ILLINOIS  
 BREAKAWAY SIGN POST DETAILS**

SCALE NONE      DRAWN BY ACE/CAD  
 DATE 07/05      CHECKED BY TAE

**AMERICAN**  
 CONSULTING ENGINEERS