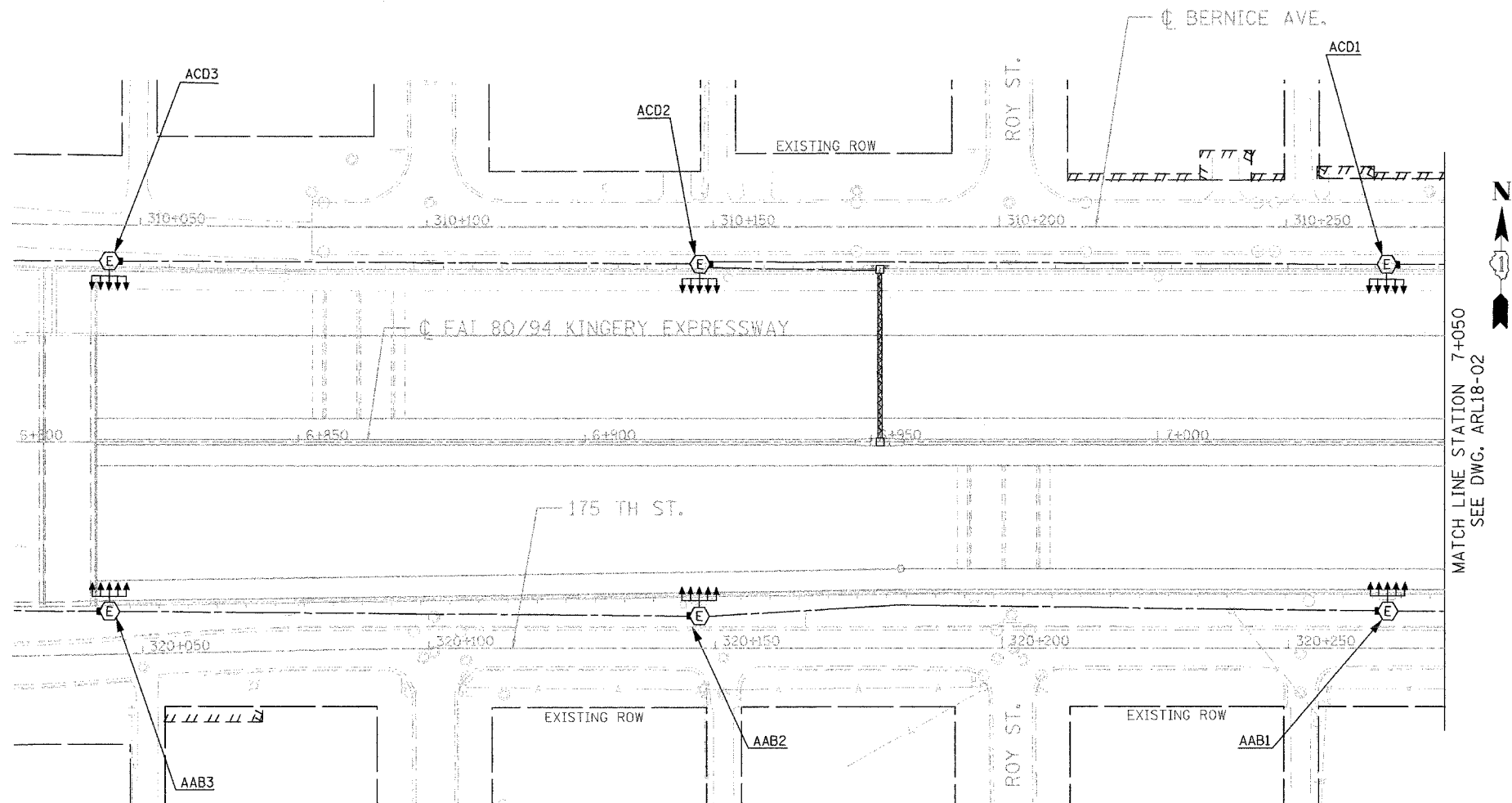
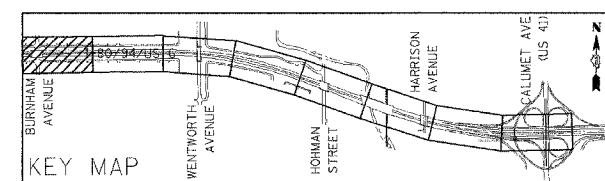


F.A.I. RTE.	SECTION	COUNTY	TOTAL SHEETS	SHEET NO.
80/94	2003-0891	COOK	1207	462
STA.	TO STA.			
FED. ROAD DIST. NO.	ILLINOIS FED. AID PROJECT			
CONTRACT # 62114				



MATCH LINE STATION 7+050  
SEE DWG. ARL18-02

**NOTE:**  
1. ALL LIGHTING WORK SHOWN HERE UNLESS NOTED OTHERWISE IS DONE BY OTHERS AND FOR COORDINATION BETWEEN THE CONTRACTORS.



REVISIONS	
NAME	DATE

**ARL18-01**

**ILLINOIS DEPARTMENT OF TRANSPORTATION**  
**I-80/94/US 6**  
**KINGERY-BORMAN EXPRESSWAY**  
**BURNHAM ROAD TO US 41**  
**PROPOSED ROADWAY LIGHTING**  
**I-80 /94 /US-6**  
**STA. 6 + 800 TO STA. 7 + 050**

SCALE 1:500      DRAWN BY EA0/BC  
DATE 07/18/05      CHECKED BY PKG/BC

**GO**  
GANDHI AND ASSOCIATES, INC.  
ENGINEERS AND PLANNERS  
8001 S. WENTWORTH HIGHWAY  
SUITE 200  
CHICAGO, ILLINOIS 60619 TEL: (773) 714-5190