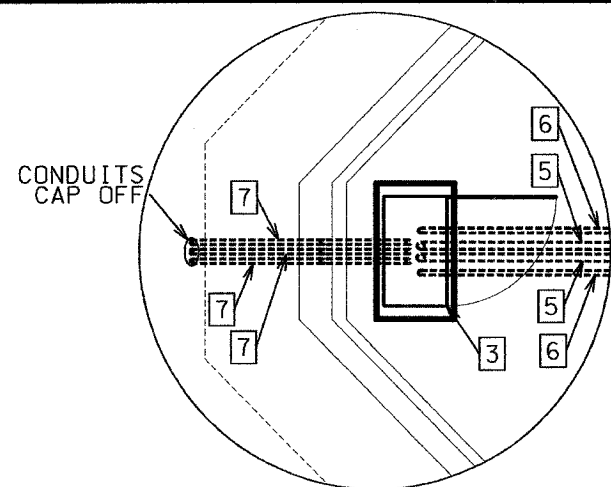
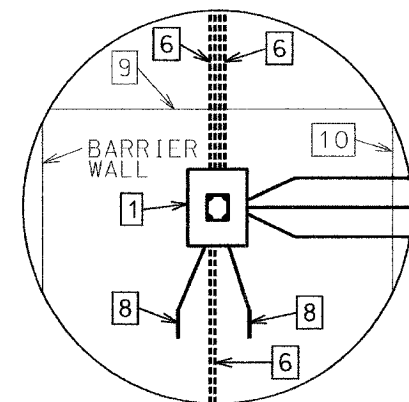


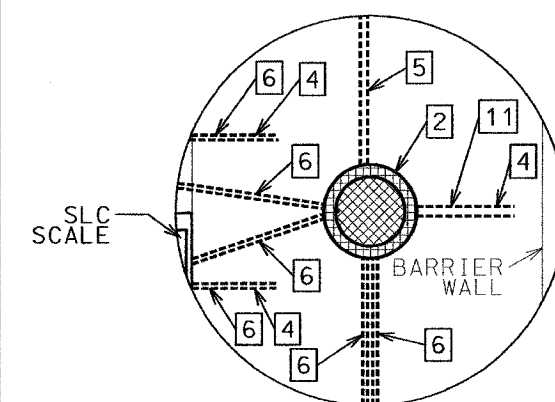
F.A.1. SHEETS	SECTION	COUNTY	TOTAL SHEETS	SHEET NO.
80/94	2626.2-R-1	COOK	1207	494
STA.	TO STA.			
FED. ROAD DIST. NO.	ILLINOIS	FED. AID PROJECT		
CONTRACT NO. 62114				



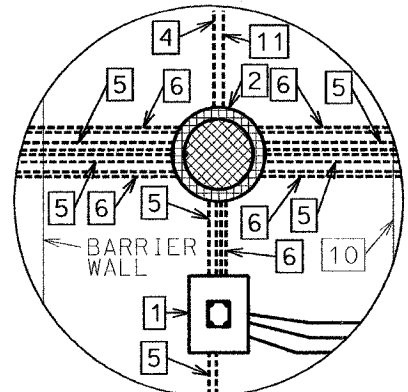
DETAIL WB 01



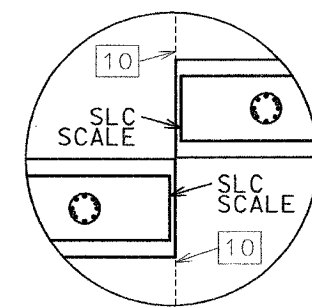
DETAIL WB 04



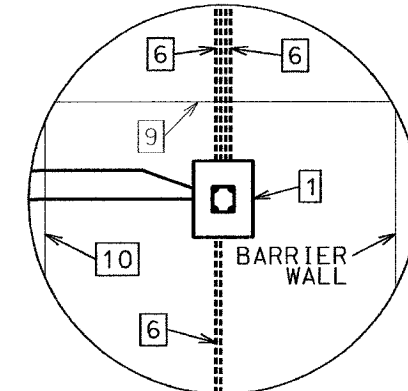
DETAIL WB 07



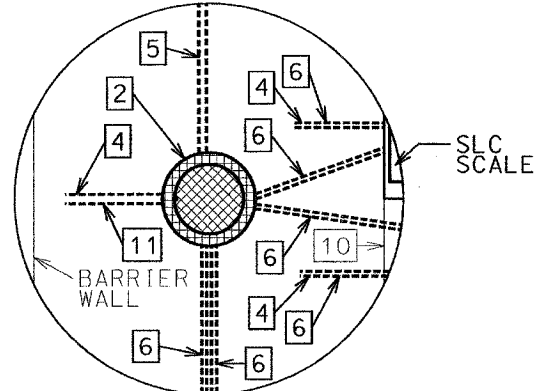
DETAIL WB 02



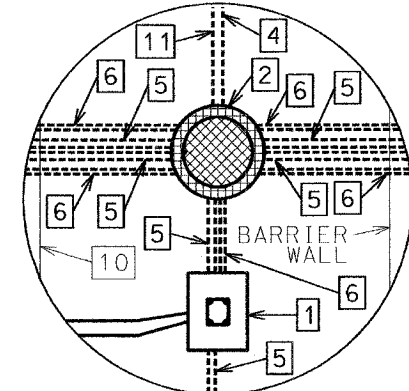
DETAIL WB 05



DETAIL WB 08



DETAIL WB 03



DETAIL WB 06

WB DETAILS

LEGEND

1 DETECTOR HOUSING (SEE DETAIL)	6 50 MM PVC CONDUIT OR 50 MM HIGH DENSITY POLYETHYLENE EHMW PIPE
2 SIGNAL HANDHOLE WITH NEENAH R-1672 SOLID LID & RING ASSY	7 50 MM GALVANIZED STEEL CONDUIT
3 TYPE "B" SIGNAL CONTROLLER CABINET AND FOUNDATION	8 TEMPERATURE SENSOR
4 CONNECT TO NEAREST CATCH BASIN	9 D1 CONTRACTION PAVEMENT JOINT
5 76 MM PVC CONDUIT OR 76 MM HIGH DENSITY POLYETHYLENE EHMW PIPE	10 LONGITUDINAL PAVEMENT JOINT
	11 100 MM PVC CONDUIT OR 100 MM HIGH DENSITY POLYETHYLENE EHMW PIPE

REVISIONS

DATE	DESCRIPTION



RECOMMENDED FOR APPROVAL: *Scott MacArthur* 6-9-05
DESIGN ENGINEER DATE

DESIGNED: DRK	DRAWN: DRK
CHECKED: DRK	CHECKED: DRK

INDIANA DEPARTMENT OF TRANSPORTATION
WB DETAILS

I-80/94/US 6
KINGERY-BORMAN EXPRESSWAY
BURNHAM ROAD TO US 41

HORIZONTAL SCALE Not To Scale	WIM STATION DETAILS
VERTICAL SCALE Not To Scale	