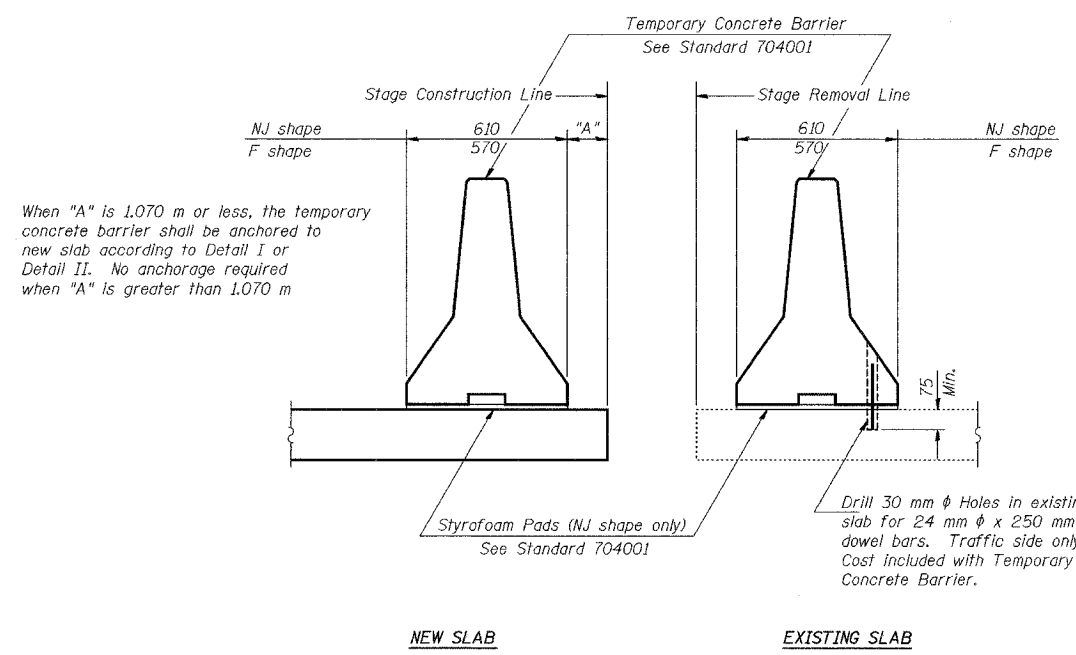
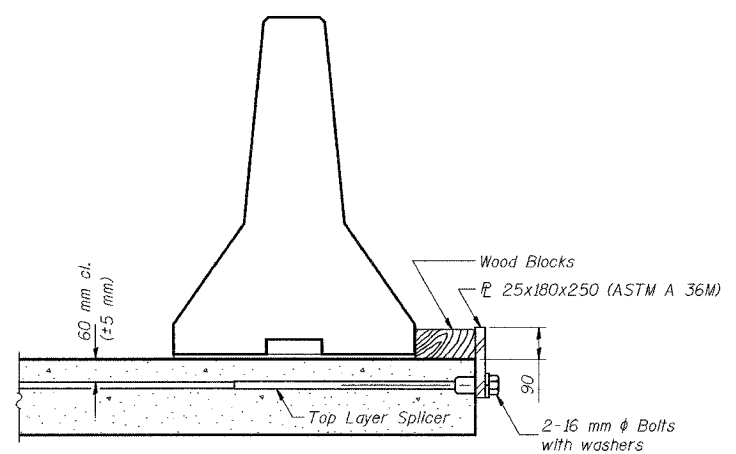


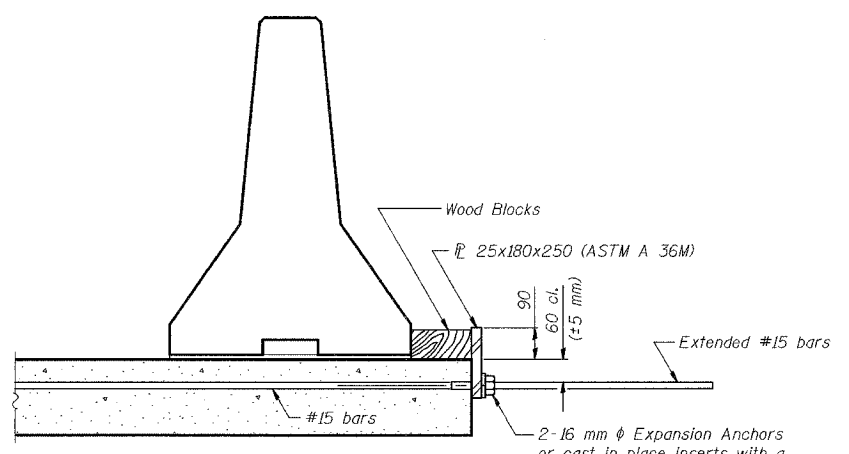
ROUTE NO.	SECTION	COUNTY	SHEETS	SHEET	SHEET NO. S-5 35 SHEETS
F.A.I. 80/94	2626.1B	COOK	1207	549	
ILLINOIS FEDERAL PROJECT: C-10-88-88					CONTRACT No. 62114



**SECTIONS THRU SLAB**



**DETAIL I**  
The 25x180x250 Plate shall not be removed until Stage II Construction forms and reinforcement bars are in place.



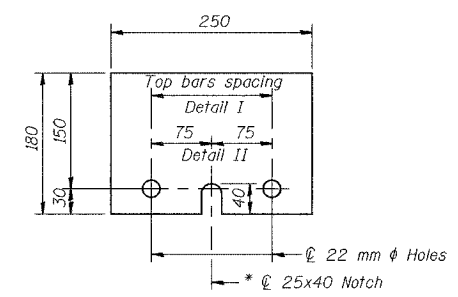
**DETAIL II**  
The 25x180x250 Plate shall not be removed until Stage II Construction forms and all reinforcement bars are in place and the concrete is ready to be placed.

**NOTES**

Detail I - With Bar Splicer or Couplers:  
Connect one (1) 25x180x250 steel  $\bar{L}$  to the top layer of couplers with 2-16 mm  $\phi$  bolts screwed to coupler at approximate  $\bar{C}$  of each 3 m barrier panel.

Detail II - With Extended Reinforcement Bars:  
Connect one (1) 25x180x250 steel  $\bar{L}$  to the concrete slab with 2-16 mm  $\phi$  Expansion Anchors or cast in place inserts spaced between the top layer of reinforcement at approximate  $\bar{C}$  of each barrier panel.

Cost of anchorage included with Temporary Concrete Barrier.  
All dimensions are in millimeters (mm) except as noted.



**$\bar{L}$  25x180x250**  
\* Required only with Detail II

DESIGNED	JDG
CHECKED	JDG
DRAWN	CAK
CHECKED	JDG

R-27 (M)

ILLINOIS DEPARTMENT OF TRANSPORTATION  
F.A.I. ROUTE 80/94 (KINGERY EXPRESSWAY)  
UNDER WENTWORTH AVE  
**TEMPORARY CONCRETE BARRIER**  
FOR STAGE CONSTRUCTION  
SECTION 2626.1B  
COOK COUNTY  
STATION 7+579.488  
STRUCTURE NO. 016-2790  
DATE 07/05

**AMERICAN**  
CONSULTING ENGINEERS

FOR INFORMATION ONLY