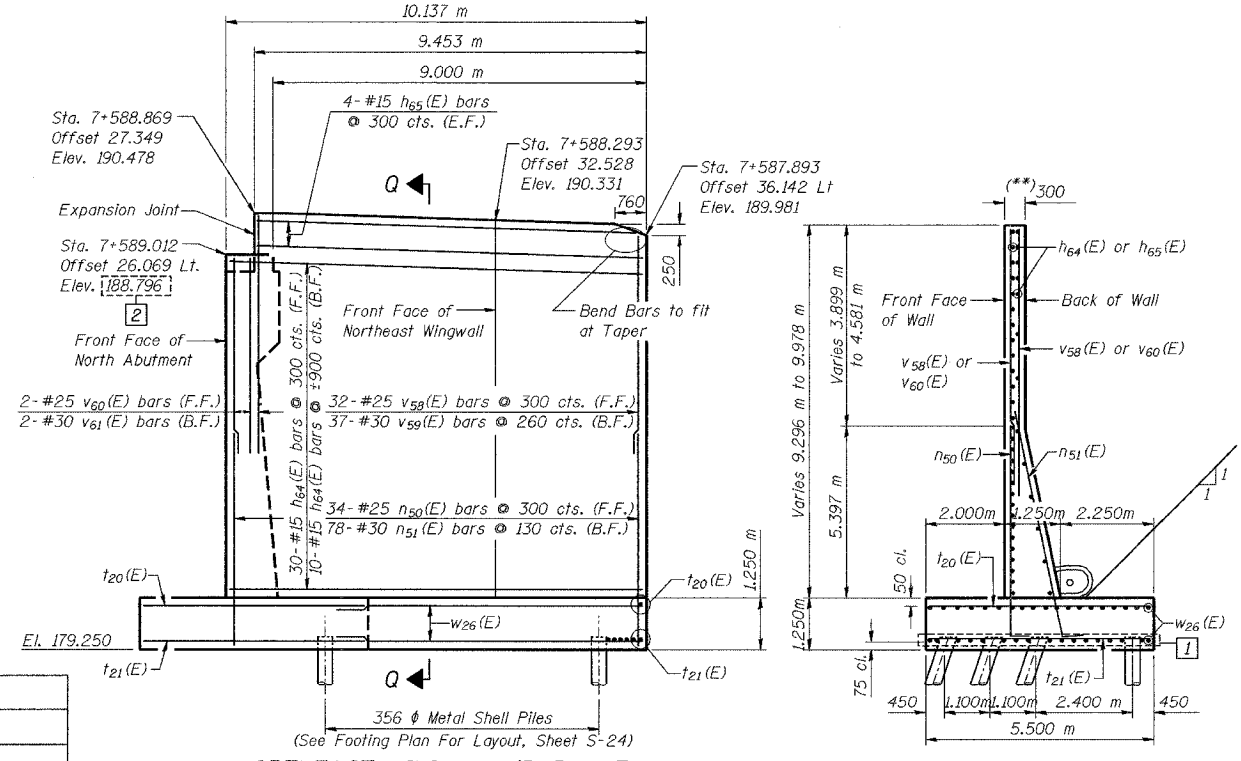


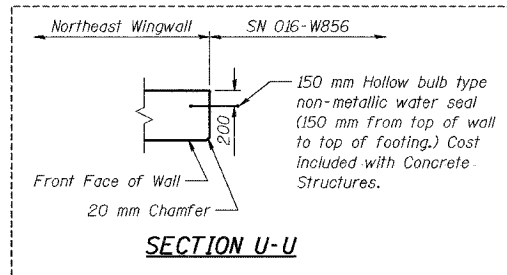
NORTHWEST WINGWALL ELEVATION
(Looking North)

NORTHEAST WINGWALL ELEVATION
(Looking North)



NORTHEAST WINGWALL (PARALLEL TO WENTWORTH AVE.) ELEVATION
(Looking West)

SECTION Q-Q



SECTION U-U

LEGEND
B.F. = Back Face
F.F. = Front Face
E.F. = Each Face

MINIMUM BAR LAPS
#15 bars = 640
#20 bars = 790
#25 bars = 1320
#30 bars = 1850

NOTES:
See Sheet S-22 for Pile Data.
See Sheet S-24 for Footing Plan.
See Sheet S-26 for Expansion Joint Detail, Section I-I and Section J-J.
See Sheet S-27 for Detail K and Detail S.
Stations are referenced to \odot I-80/94. See Sheet S-26 for offset diagram.
The wingwalls are to be constructed on chords between the stations shown.
Reinforcement bars designated (E) shall be epoxy coated.
All edges shall have standard 20 mm chamfers except as noted.
All dimensions are in millimeters (mm) except as noted.
(*) Cut from full length bars. See Sheet S-26 for Field Cutting Diagrams.
(**) Wall thickness includes 40 mm Rustication.

DESIGNED	BHS
CHECKED	GSP
DRAWN	BHS
CHECKED	GSP

2 REVISED 03-29-04 BHS
1 REVISED 09-10-03 KFA

ILLINOIS DEPARTMENT OF TRANSPORTATION
F.A.I. ROUTE 80/94 (KINGERY EXPRESSWAY)
UNDER WENTWORTH AVE
NORTH WINGWALLS
SECTION 2626.1B
COOK COUNTY
STATION 7+579.488
STRUCTURE NO. 016-2790
DATE 07/05
AMERICAN
CONSULTING ENGINEERS

FOR INFORMATION ONLY