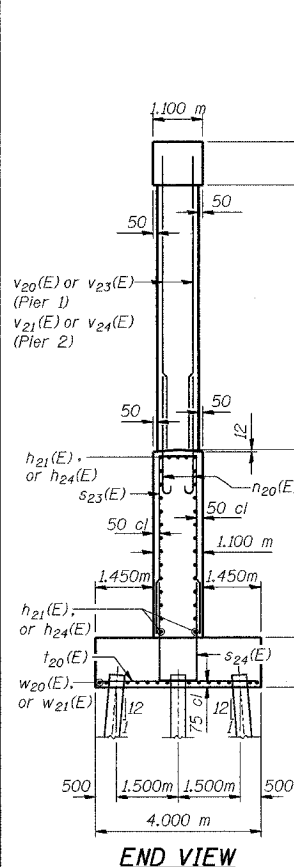


BEARING SEAT ELEVATIONS

Girder	Pier 1	Pier 2
14	189.866	190.119
13	189.921	190.169
12	189.976	190.218
11	190.031	190.266
10	190.086	190.315
9	190.141	190.363
8	190.195	190.412
7	190.249	190.460
6	190.303	190.508
5	190.357	190.556
4	190.411	190.604
3	190.464	190.651
2	190.518	190.698
1	190.571	190.746

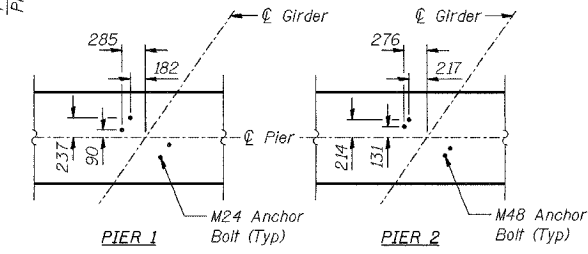
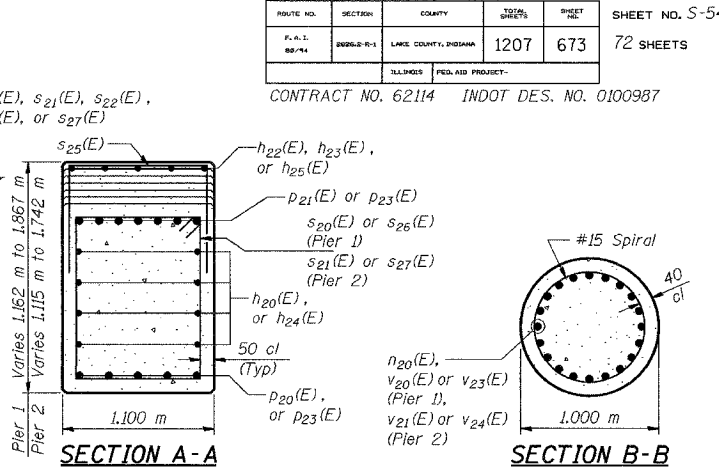
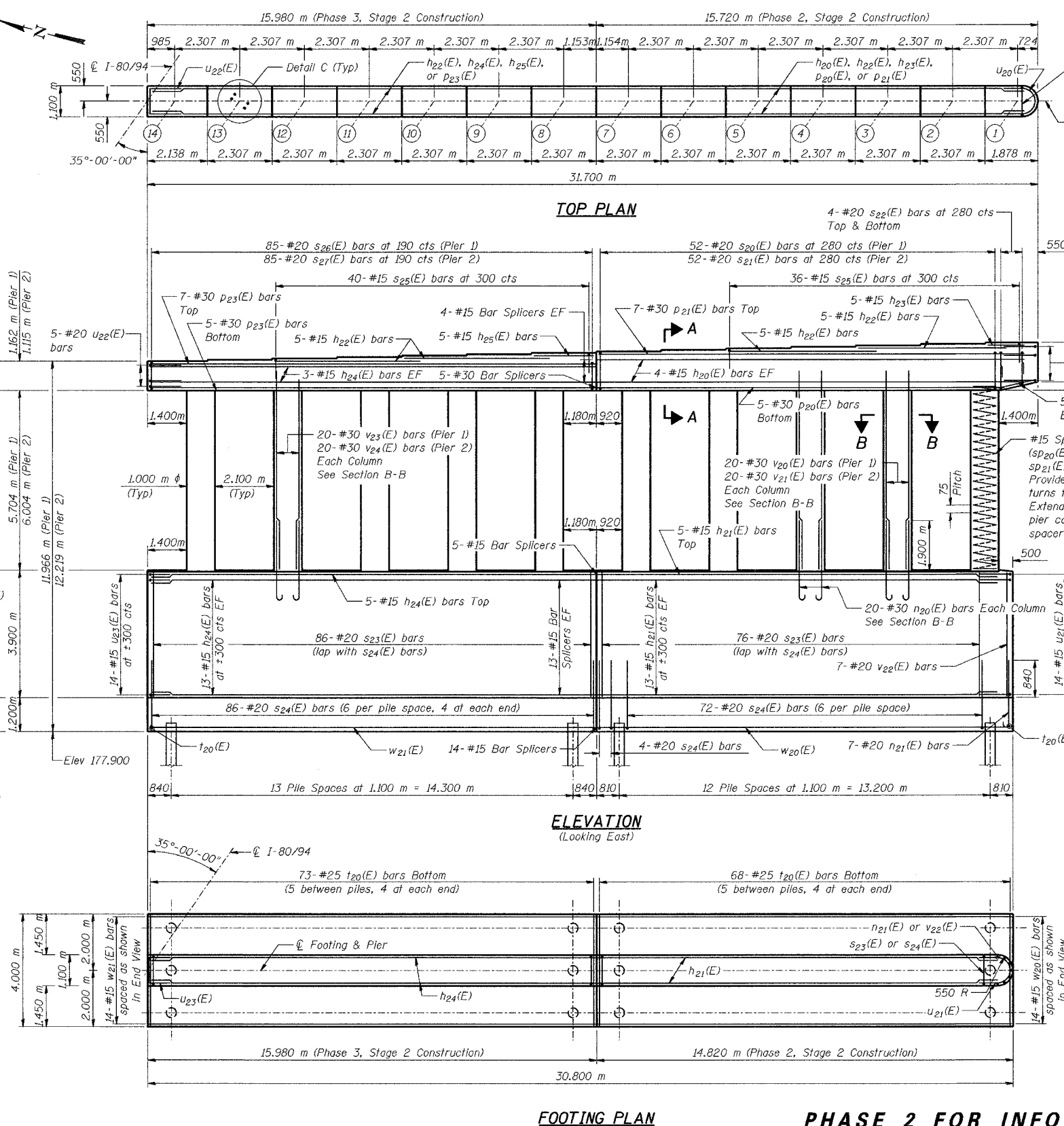


PILE DATA

Type - 356 ϕ Metal Shell
 Capacity - 500 kN
 Est Length - 16.9 m
 No Req'd - 160 Total*
 Test Piles - 1 per Pier

DESIGNED	BHS
CHECKED	KFA
DRAWN	MJB
CHECKED	GSP

* Phase 2, Stage 2: 38 per Pier
 Phase 3, Stage 2: 42 per Pier



DETAIL C ANCHOR BOLT LAYOUT

NOTES:
 See Sheet No S-60 for Bill of Material.
 Space reinforcement in cap to miss anchor bolts.
 Pour steps monolithically with cap.
 Reinforcement bars designated (E) shall be epoxy coated.
 All dimensions are in millimeters (mm) except as noted.

LEGEND
 EF - Each Face

MINIMUM BAR LAPS

#15 bars = 640
#20 bars = 790
#25 bars = 1320
#30 bars = 1850

ILLINOIS DEPARTMENT OF TRANSPORTATION
 F.A.I. ROUTE 80/94 (BORMAN EXPRESSWAY)
 OVER LITTLE CALUMET RIVER & N.I.C.T.D. R.O.W.

PIERS 1 AND 2 - EASTBOUND
SECTION 2626.2-R-1
LAKE COUNTY, INDIANA
STATION 8+470.000
STRUCTURE NO. I-80-1-8460 (EB & WB)
 DATE 07/05 (016-1003 & 016-1004)

AMERICAN
 CONSULTING ENGINEERS

PHASE 2 FOR INFORMATION ONLY

ROUTE NO.	SECTION	COUNTY	SHEET	SHEET NO. S-54
F.A.I.	2626.2-R-1	LAKE COUNTY, INDIANA	1207	673
72 SHEETS				

CONTRACT NO. 62114 INDOT DES. NO. 0100987