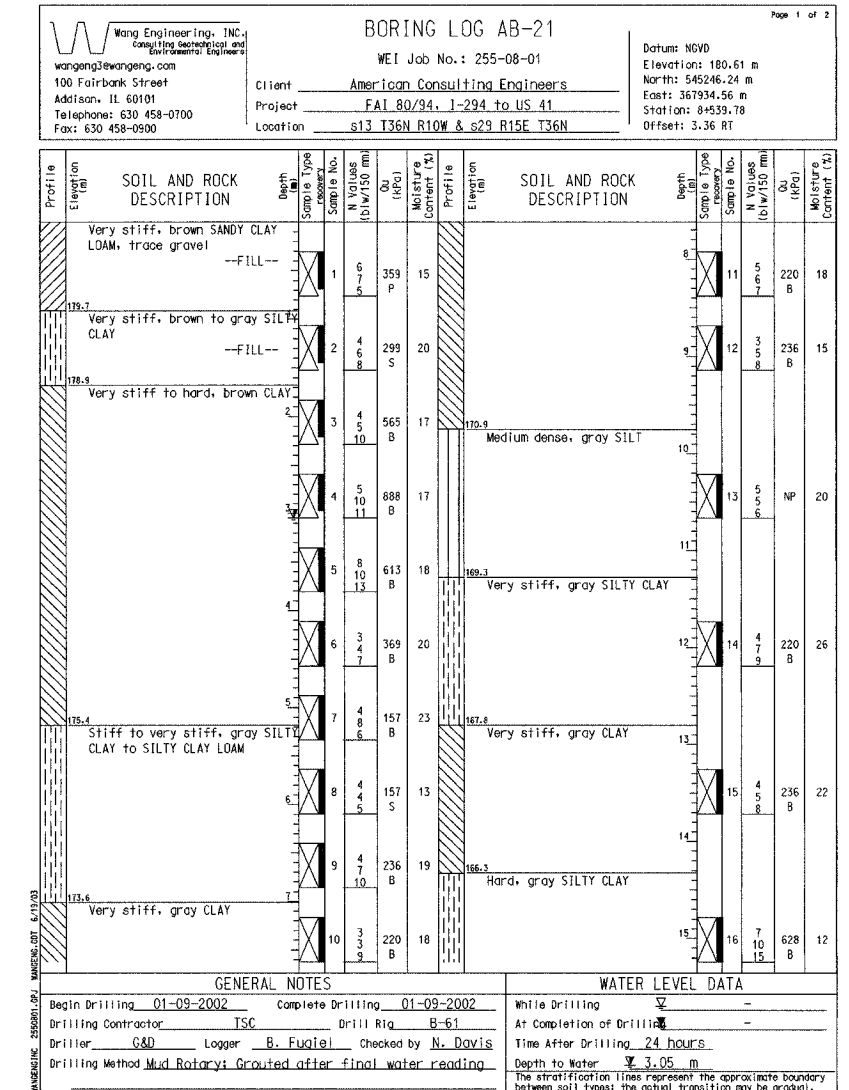
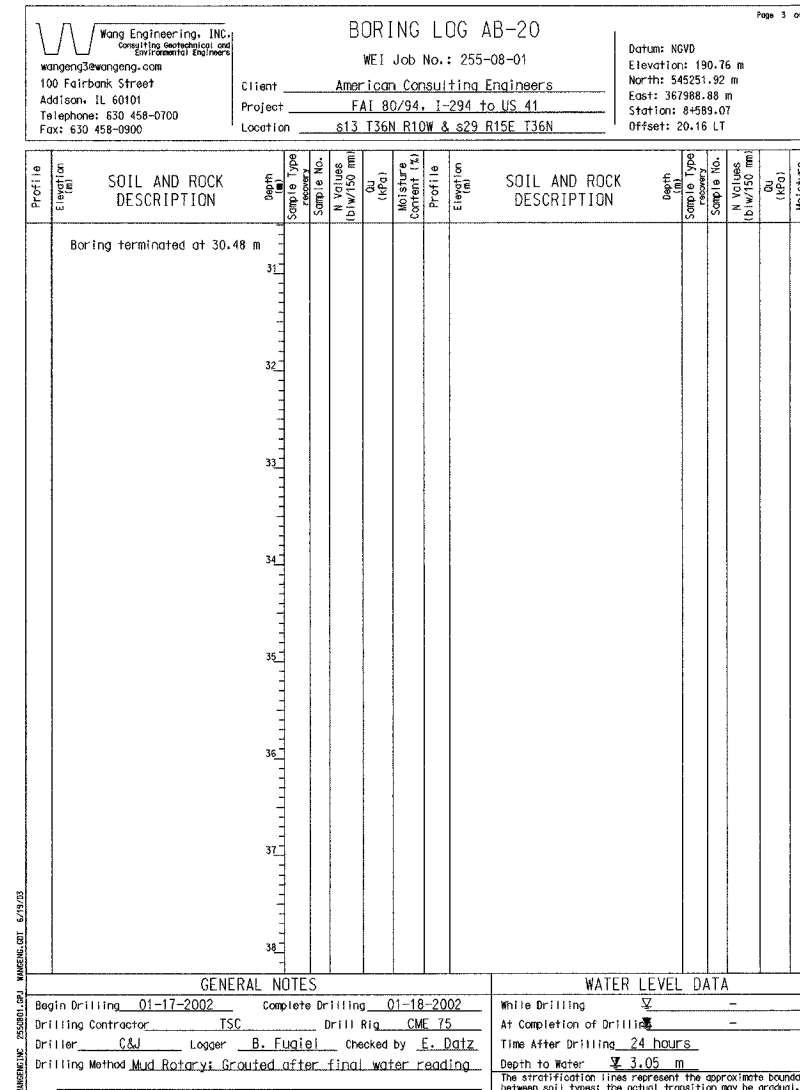
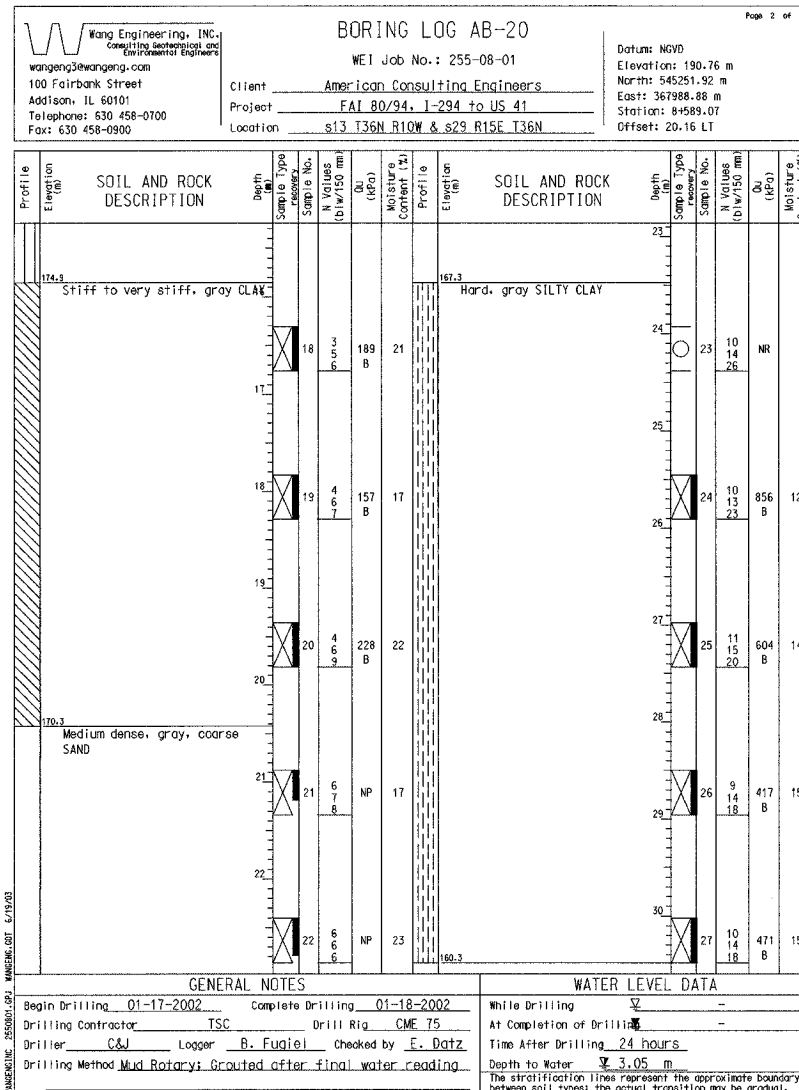


BORING NO. AB-20 (2 OF 3)

BORING NO. AB-20 (3 OF 3)

BORING NO. AB-21 (1 OF 2)



DESIGNED	BHS
CHECKED	KFA
DRAWN	CAKMJB
CHECKED	GSP

ILLINOIS DEPARTMENT OF TRANSPORTATION
F.A.I. ROUTE 80/94 (BORMAN EXPRESSWAY)
OVER LITTLE CALUMET RIVER & N.I.C.T.D. R.O.W.

**BORING LOGS (7 OF 10)
SECTION 2626.2-R-1
LAKE COUNTY, INDIANA
STATION 8+470.000
STRUCTURE NO. I-80-1-8460 (EB & WB)
DATE 07/05 (016-1003 & 016-1004)**

AMERICAN CONSULTING ENGINEERS