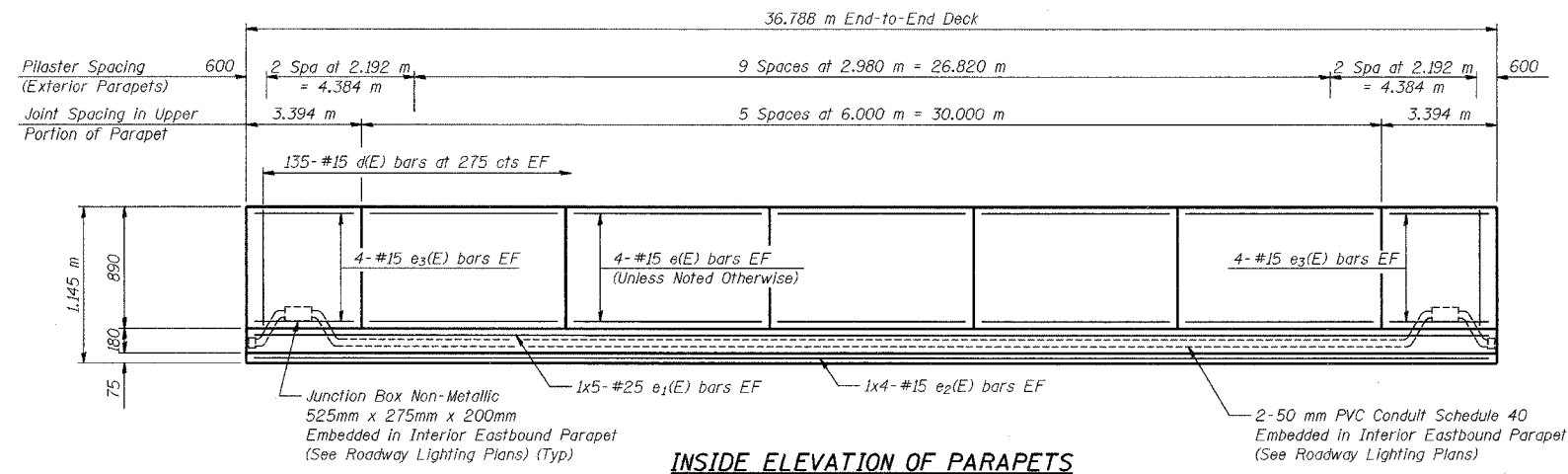
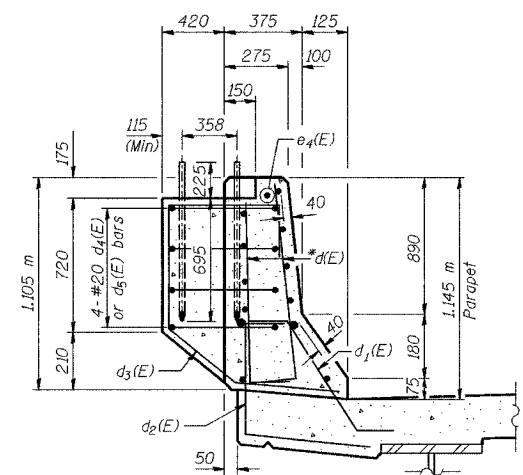


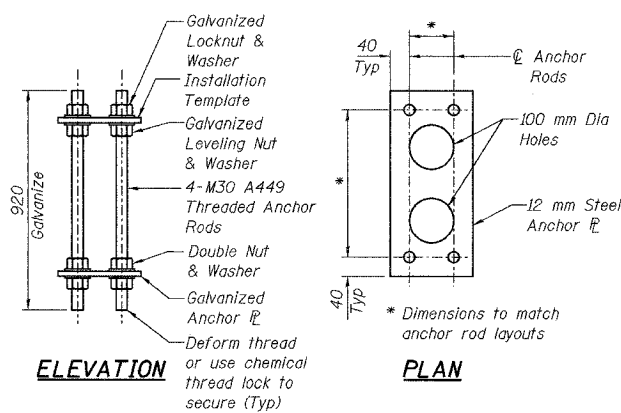
ROUTE NO.	SECTION	COUNTY	SHEET	SHEET	SHEET NO. S-13
F.A.L.	PROJ. NO.	LAKE COUNTY, INDIANA	1207	704	
DRAWN		DESIGNED		CONTRACT NO. 62114 INDOT DES. NO. 0100987	



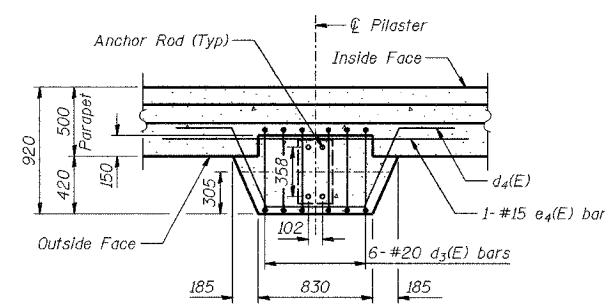
INSIDE ELEVATION OF PARAPETS
(Dimensions measured along inside face of parapet)



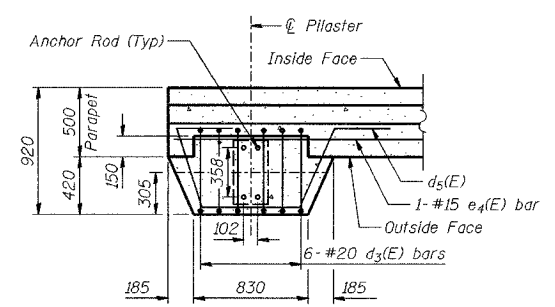
NOISEWALL PILASTER DETAIL
*Cut d(E) bar on Back Face to fit.



NOISE ABATEMENT WALL ANCHOR ROD ASSEMBLY
(28 Req'd)



TYPICAL PILASTER SUPPORT - PLAN VIEW
(Reinforcement in Parapet not shown)
(1 Noise Abatement Wall Anchor Rod Assembly per Pilaster)
(24 Pilasters Req'd)

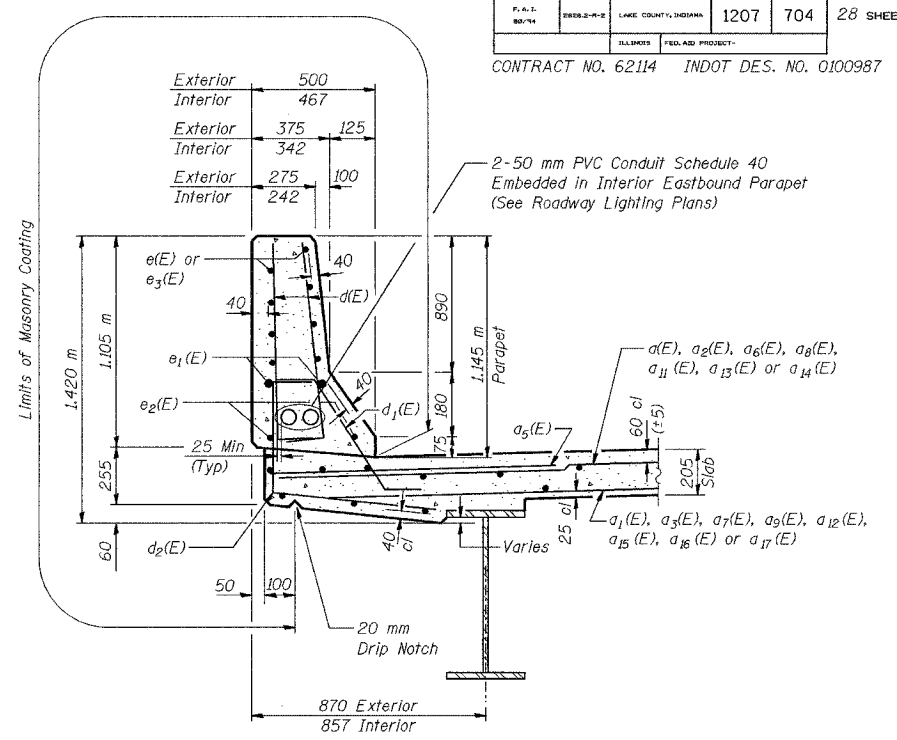


PILASTER SUPPORT AT END OF PARAPET - PLAN VIEW
(Reinforcement in Parapet not shown)
(1 Noise Abatement Wall Anchor Rod Assembly per Pilaster)
(4 Pilasters Req'd)

DESIGNED	BHS
CHECKED	KFA
DRAWN	MJB
CHECKED	GSP

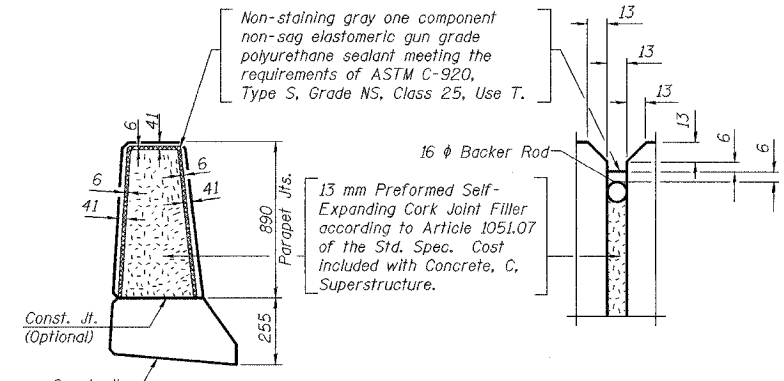
LEGEND
EF - Each Face

MINIMUM BAR LAPS
#15 = 640
#25 = 1,320 m



SECTION THRU PARAPETS

All concrete edges shall have a 20 mm chamfer.



PARAPET JOINT DETAILS

NOTES:
See Sheet No S-14 for Bill of Material.
Reinforcement bars designated (E) shall be epoxy coated.
Bars indicated thus 20 x 3-#15 etc. indicates 20 lines of bars with 3 lengths per line.
All dimensions are in millimeters (mm) except as noted.

ILLINOIS DEPARTMENT OF TRANSPORTATION
F.A.L. ROUTE 80/94 (BORMAN EXPRESSWAY)
OVER HARRISON AVENUE

PARAPET ELEVATIONS
SECTION 2626.2-R-2
LAKE COUNTY, INDIANA
STATION 8+754.874
STRUCTURE NO. I-80-1-8461 (EB & WB)
DATE 09/05 (016-1005 & 016-1006)

AMERICAN
CONSULTING ENGINEERS