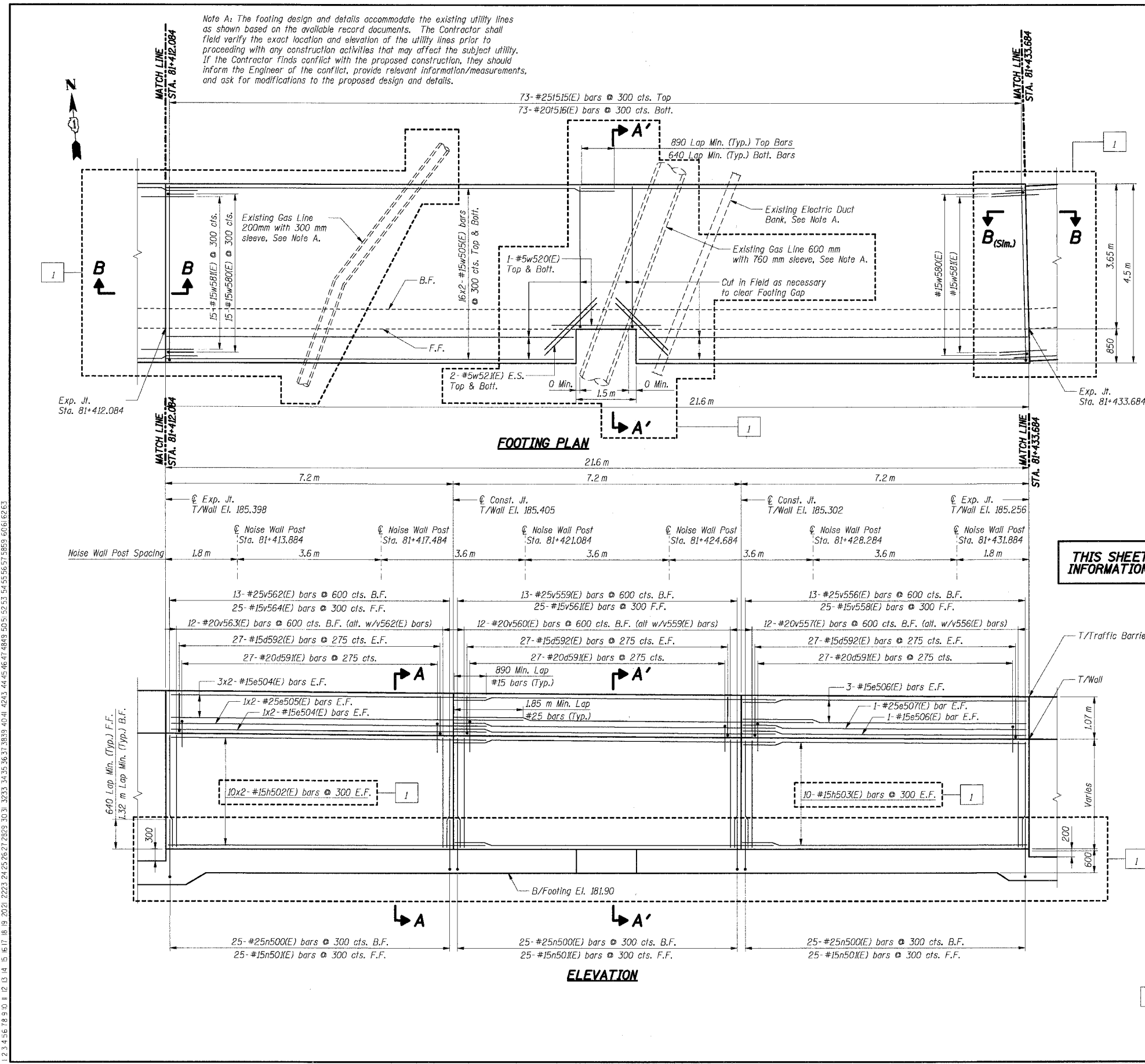


| | | | | |
|---------------------|------------|----------|------------------|-----------|
| F.A.I. RTE. | SECTION | COUNTY | TOTAL SHEETS | SHEET NO. |
| 80/94 | 2626.2-R-2 | COOK | 1207 | 739 |
| STA. | | TO STA. | | |
| FED. ROAD DIST. NO. | | ILLINOIS | FED. AID PROJECT | |
| CONTRACT NO. 62114 | | | | |



BAR LIST

| Bar | No. | Size | Length (m) | Shape |
|---------|-----|------|------------|-------|
| a591(E) | 81 | #20 | 2.59 | U |
| a592(E) | 162 | #15 | 1.22 | U |
| e504(E) | 16 | #15 | 8.05 | U |
| e505(E) | 4 | #25 | 9.05 | U |
| e506(E) | 8 | #15 | 7.15 | U |
| e507(E) | 2 | #25 | 7.15 | U |
| h502(E) | 40 | #15 | 8.05 | U |
| h503(E) | 20 | #15 | 7.15 | U |
| n500(E) | 75 | #25 | 2.30 | U |
| n501(E) | 75 | #15 | 1.50 | U |
| 1515(E) | 73 | #25 | 4.90 | U |
| 1516(E) | 73 | #20 | 4.40 | U |
| v556(E) | 13 | #25 | 2.70 | U |
| v557(E) | 12 | #20 | 2.70 | U |
| v558(E) | 25 | #15 | 2.70 | U |
| v559(E) | 13 | #25 | 2.75 | U |
| v560(E) | 12 | #20 | 2.75 | U |
| v561(E) | 25 | #15 | 2.75 | U |
| v562(E) | 13 | #25 | 2.85 | U |
| v563(E) | 12 | #20 | 2.85 | U |
| v564(E) | 25 | #15 | 2.85 | U |
| w505(E) | 64 | #15 | 11.90 | U |
| w520(E) | 2 | #15 | 2.72 | U |
| w521(E) | 8 | #15 | 1.84 | U |
| w590(E) | 15 | #15 | 1.50 | U |
| w581(E) | 15 | #15 | 2.20 | U |

THIS SHEET FOR INFORMATION ONLY

BILL OF MATERIAL

| Item | Unit | Total |
|----------------------------------|------|-------|
| Concrete Structures | Cu m | 98.0 |
| Reinforcement Bars, Epoxy Coated | kg | 7,300 |

- Notes:**
- All dimensions are in millimeters (mm) except as noted.
 - Reinforcement bars designated (E) shall be epoxy coated.
 - All edges shall have a 20 mm chamfer unless noted otherwise.
 - For section A-A, section A'-A' and section B-B, see Sheet RW835-26.
 - E.S. indicates each side, E.F. indicates each face, B.F. indicates back face, F.F. indicates front face.
 - For Noise Abatement Wall pilaster details see sheet RW835-30.
 - For Traffic Barrier details see Sht. RW835-30.
 - For Rustication Finish & joint details see Sht. RW835-32.
 - For Drainage and Reinforcement details see Sht. RW835-31.
 - Maximum Applied Soil Bearing Pressure, $q_{max} = 100$ kPa.
 - Bars indicated thus 4x2-#15 etc. indicates 4 lines of bars with 2 lengths per line.

SHT. RW835-21 OF 34

| REVISIONS | |
|-----------|--------|
| NAME | DATE |
| PA | 8/3/04 |

ILLINOIS DEPARTMENT OF TRANSPORTATION
 F.A.I. ROUTE 80/94 (KINGERY EXPRESSWAY)
 IL ROUTE 83 RECONSTRUCTION
 RETAINING WALL - STRUCTURE NO. 016-W835
 SECTION 2425 R-3 & 2425-711B
 COOK COUNTY

FOOTING PLAN & WALL ELEVATION 17

DATE: 02/20/2004
 DRAWN BY: DG
 CHECKED BY: SC

TENG
 TENG & ASSOCIATES, INC.
 ENGINEERS/ARCHITECTS/PLANNERS
 CHICAGO, ILLINOIS

7-11-2005, 1633613
 T:\DOCUMENT\831750\STRUCT\CGNR\8352722A.DGN
 1 2 3 4 5 6 7 8 9 10 11 12 13 14 15 16 17 18 19 20 21 22 23 24 25 26 27 28 29 30 31 32 33 34 35 36 37 38 39 40 41 42 43 44 45 46 47 48 49 50 51 52 53 54 55 56 57 58 59 60 61 62 63