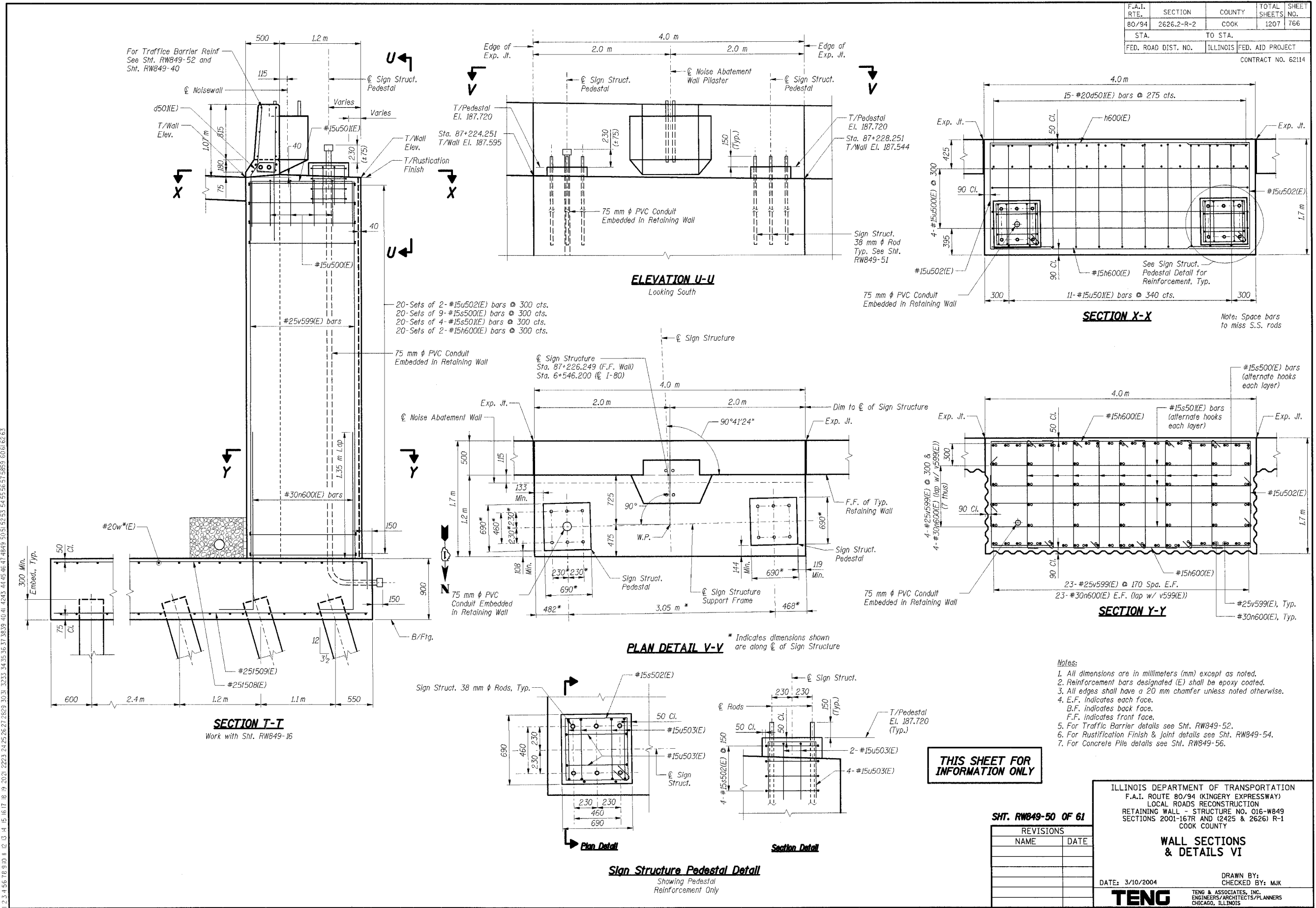


F.A.I. RTE.	SECTION	COUNTY	TOTAL SHEETS	SHEET NO.
80/94	2626.2-R-2	COOK	1207	766
STA.	TO STA.			
FED. ROAD DIST. NO.	ILLINOIS	FED. AID PROJECT		
CONTRACT NO. 62114				



20-Sets of 2-#15u502(E) bars @ 300 cts.
 20-Sets of 9-#15s500(E) bars @ 300 cts.
 20-Sets of 4-#15s501(E) bars @ 300 cts.
 20-Sets of 2-#15h600(E) bars @ 300 cts.

Note: Space bars to miss S.S. rods

- Notes:
- All dimensions are in millimeters (mm) except as noted.
 - Reinforcement bars designated (E) shall be epoxy coated.
 - All edges shall have a 20 mm chamfer unless noted otherwise.
 - E.F. indicates each face.
 - B.F. indicates back face.
 - F.F. indicates front face.
 - For Traffic Barrier details see Sht. RW849-52.
 - For Rustification Finish & joint details see Sht. RW849-54.
 - For Concrete Pile details see Sht. RW849-56.

SHT. RW849-50 OF 61

REVISIONS	
NAME	DATE

ILLINOIS DEPARTMENT OF TRANSPORTATION
 F.A.I. ROUTE 80/94 (KINGERY EXPRESSWAY)
 LOCAL ROADS RECONSTRUCTION
 RETAINING WALL - STRUCTURE NO. 016-WB49
 SECTIONS 2001-167R AND (2425 & 2626) R-1
 COOK COUNTY

WALL SECTIONS & DETAILS VI

DATE: 3/10/2004

DRAWN BY: MJK
 CHECKED BY: MJK

TENG
 TENG & ASSOCIATES, INC.
 ENGINEERS/ARCHITECTS/PLANNERS
 CHICAGO, ILLINOIS

8-12-2005, 15:25:43
 T:\DOCUMENTS\19250\STRUCT\ADON\RS89752A.DGN
 1 2 3 4 5 6 7 8 9 10 11 12 13 14 15 16 17 18 19 20 21 22 23 24 25 26 27 28 29 30 31 32 33 34 35 36 37 38 39 40 41 42 43 44 45 46 47 48 49 50 51 52 53 54 55 56 57 58 59 60 61 62 63
 KUIENSTJAU
 *****ref_list_name*****