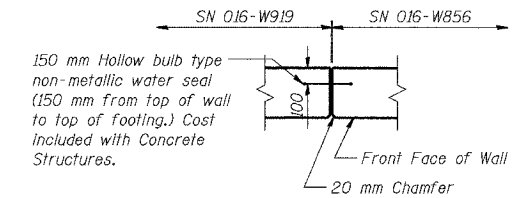
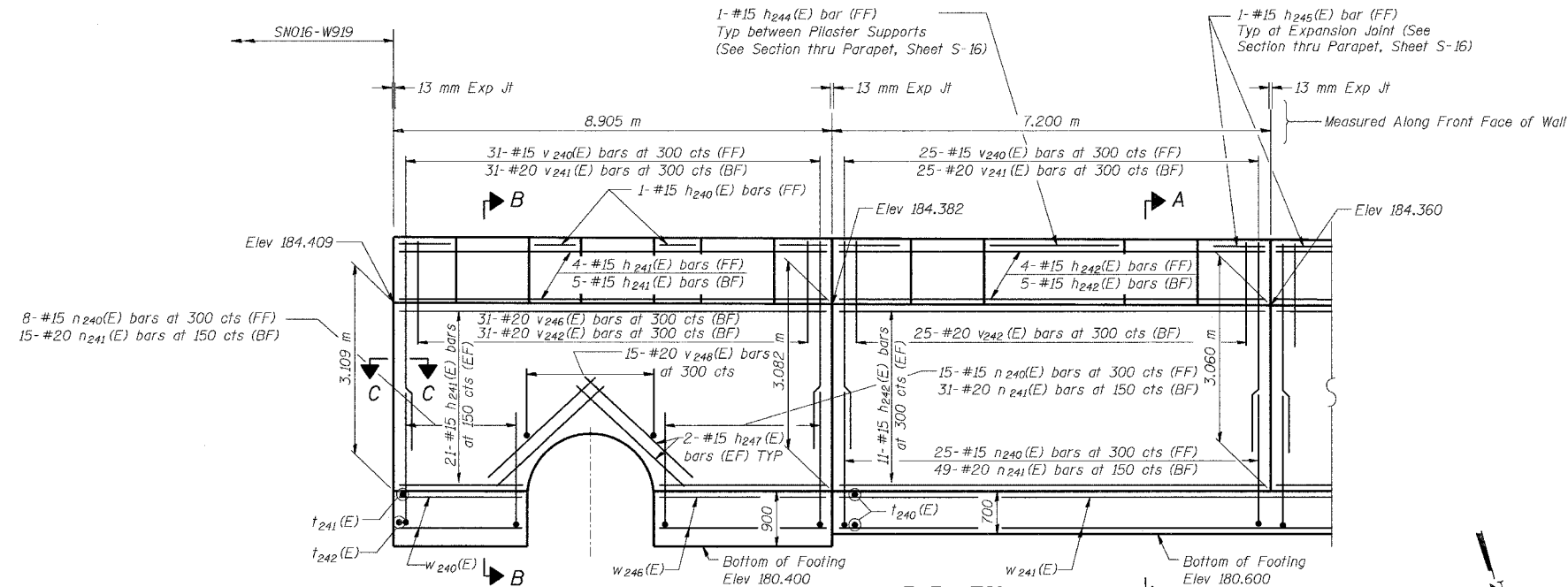
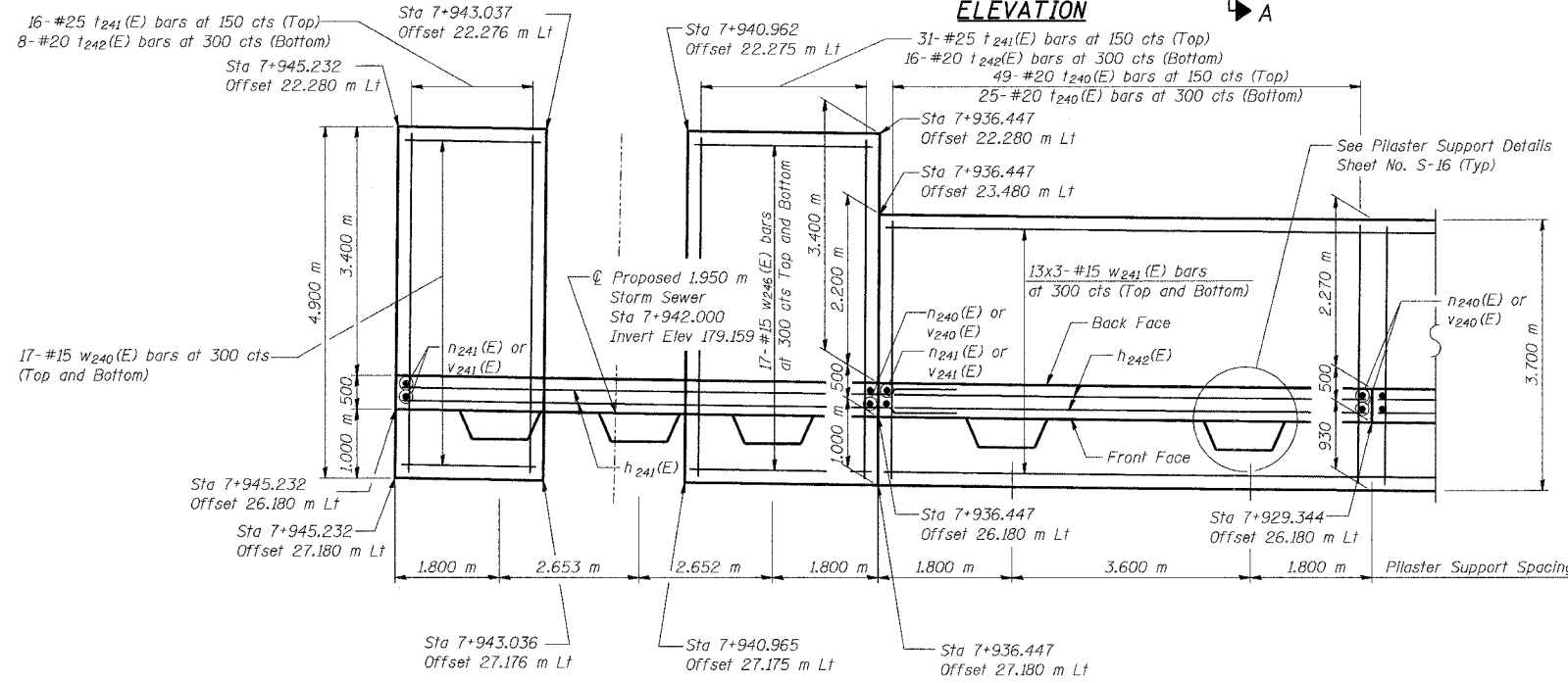


ROUTE NO.	SECTION	COUNTY	SHEET NO.	SHEET
1207	823	COOK	1207	823
SHEET NO. S-3				
20 SHEETS				

CONTRACT NO. 62114 INDOT DES. NO. 0100987



SECTION C-C



FOOTING PLAN

DESIGNED	KFA
CHECKED	BPS
DRAWN	MJB
CHECKED	GSP

NOTES:
 See Sheet S-16 for Section A-A, Section B-B, Expansion Joint Detail, and Bill of Material.
 See Sheet S-17 for Rustication details.
 Stations are referenced to \odot I-80/94.
 Reinforcement bars designated (E) shall be epoxy coated.
 All dimensions are in millimeters (mm) except as noted.
 Bars indicated thus 20 x 3-#15 etc. indicates 20 lines of bars with 3 lengths per line.
 See Electrical Drawings for Junction Box and Conduit Details.

MINIMUM BAR LAPS	LEGEND
#15 bars = 640	BF = Back Face
#20 bars = 790	FF = Front Face
	EF = Each Face

ILLINOIS DEPARTMENT OF TRANSPORTATION
 I-80/94 US 6
 KINGERY-BORMAN EXPRESSWAY
 BURNHAM ROAD TO US 41
PLAN AND ELEVATION (1 OF 13)
SECTION 2626.2-R-1
COOK COUNTY
STATION 7+893.827 TO STATION 7+945.232
STRUCTURE NO. 016-W856
 DATE 09/05
AMERICAN
 CONSULTING ENGINEERS