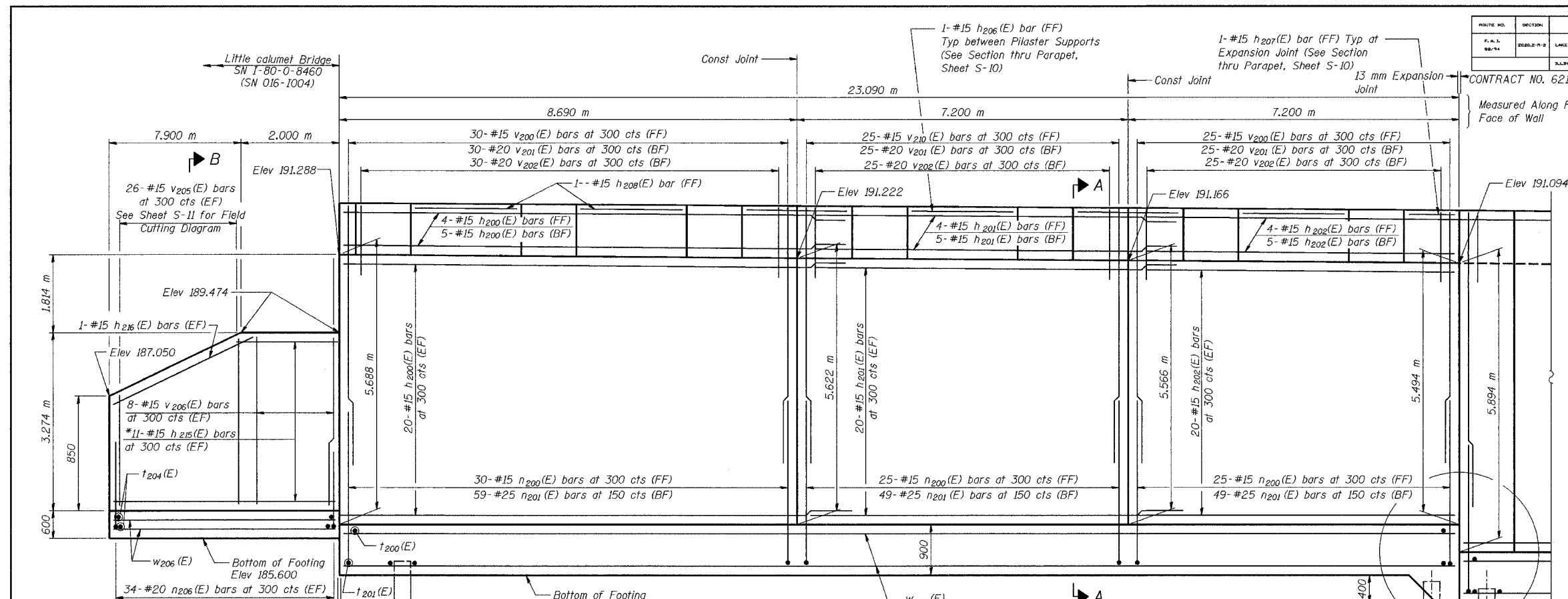
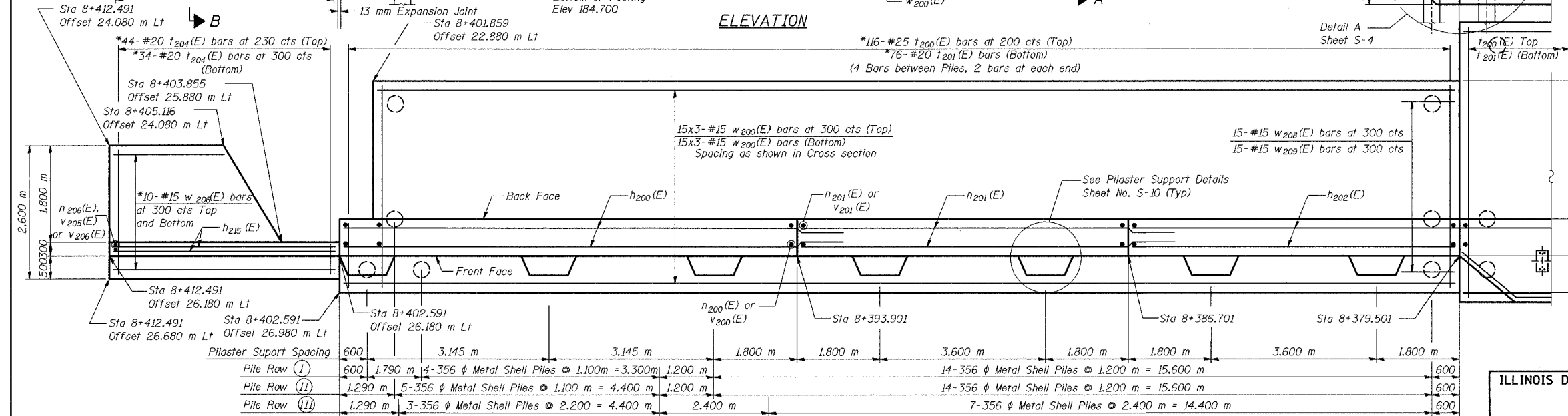


ROUTE NO.	SECTION	COUNTY	SHEET	SHEET NO. S-3
I-80/94	2626.2-R-2	LAKE COUNTY, INDIANA	1207	863
PROJECT		CONTRACT NO. 62114 INDOT DES. NO. 0100987		
SHEET		20 SHEETS		



ELEVATION



FOOTING PLAN

MINIMUM BAR LAPS

#15 bars = 640
#20 bars = 790

LEGEND

BF = Back Face
FF = Front Face
EF = Each Face

DESIGNED	KFA
CHECKED	BPS
DRAWN	MJB
CHECKED	GSP

NOTES:

See Sheet S-10 for Section A-A and Section B-B.
See Sheet S-11 for Expansion Joint Detail and Bill of Material.
See Sheet S-12 for Rustication details.
Stations are referenced to \odot I-80/94.
Reinforcement bars designated (E) shall be epoxy coated.

All dimensions are in millimeters (mm) except as noted.
Bars indicated thus 20 x 3-#15 etc. indicates 20 lines of bars with 3 lengths per line.
* Cut to Fit

ILLINOIS DEPARTMENT OF TRANSPORTATION
I-80/94/US 6
KINGERY-BORMAN EXPRESSWAY
BURNHAM ROAD TO US 41

PLAN AND ELEVATION (1 OF 7)
SECTION 2626.2-R-2
LAKE COUNTY, INDIANA
STATION 8+235.100 TO STATION 8+412.491
STRUCTURE NO. 016-W858

DATE 09/05

AMERICAN
CONSULTING ENGINEERS