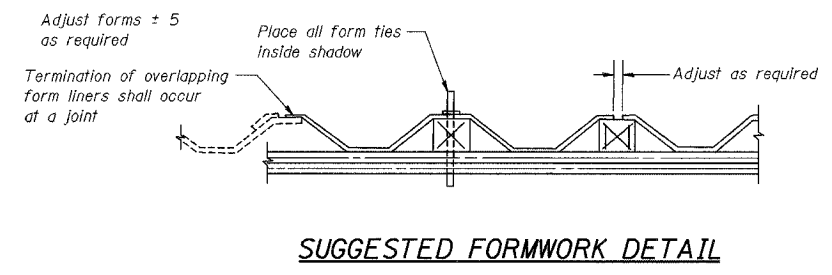
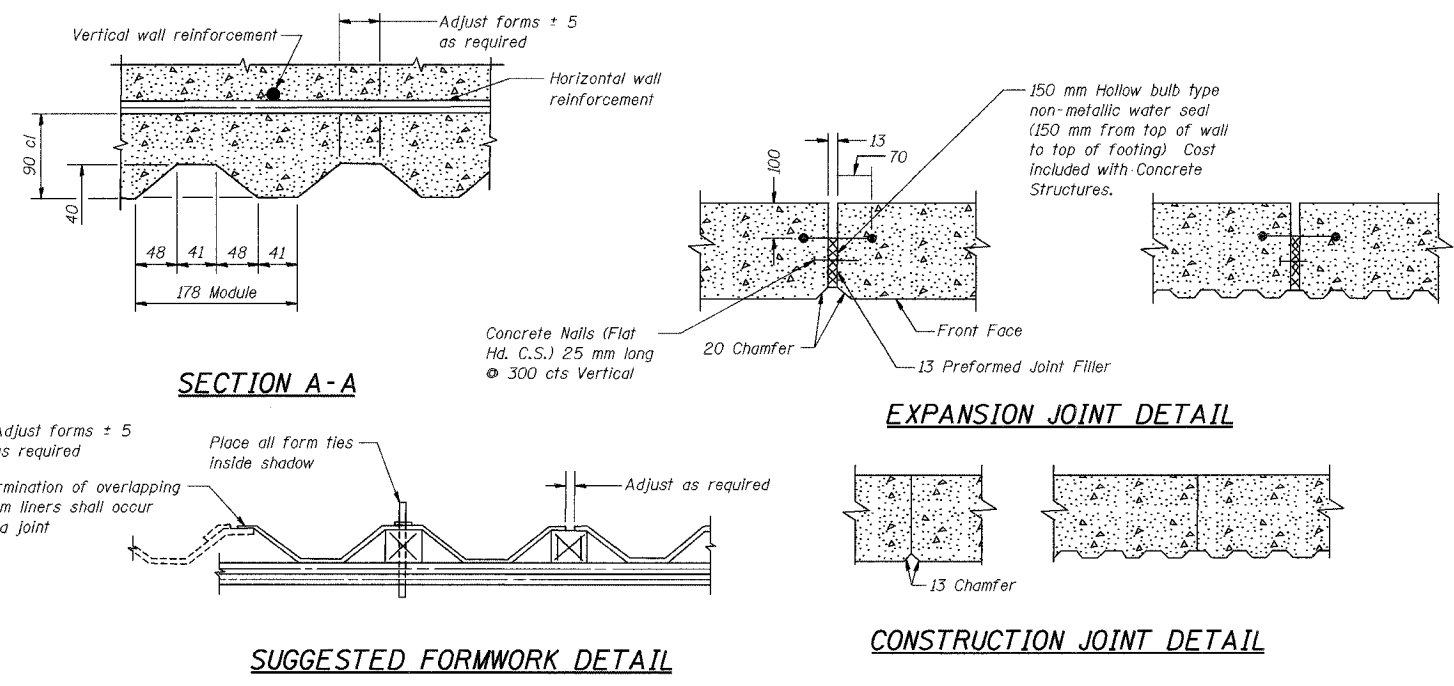


RUSTICATION LIMITS

STATION	TOP OF WALL ELEVATION	BOTTOM OF RUSTICATION ELEVATION
8+235.100	183.050	182.500
8+240.900	187.312	182.500
8+242.700	187.312	182.500
8+242.700	188.753	182.800
8+250.401	188.925	182.800
8+257.601	189.077	182.800
8+264.801	189.228	182.800
8+264.801	189.228	183.700
8+271.501	189.368	183.700
8+278.701	189.519	183.700
8+285.901	189.665	183.700
8+285.901	189.665	184.200
8+293.101	189.806	184.200
8+300.301	189.944	184.200
8+307.501	190.072	184.200
8+307.501	190.072	184.900
8+314.701	190.195	184.900
8+321.901	190.313	184.900
8+329.101	190.426	184.900
8+329.101	190.426	184.900
8+336.301	190.533	184.900
8+343.501	190.636	184.900
8+350.701	190.733	184.900
8+350.701	190.733	185.500
8+357.901	190.827	185.500
8+365.101	190.924	185.500
8+372.301	191.015	185.500
8+379.501	191.094	185.500
8+379.501	191.094	185.900
8+386.701	191.166	185.900
8+393.901	191.222	185.900
8+402.591	191.288	185.900
8+402.591	189.474	186.500
8+404.591	189.474	186.500
8+412.491	187.050	186.500



DESIGNED	KFA
CHECKED	BPS
DRAWN	MJB
CHECKED	GSP

BILL OF MATERIAL

Item	Unit	Total
Rustication Finish	m ²	959

Note: All dimensions are in millimeters (mm) unless otherwise noted.

ILLINOIS DEPARTMENT OF TRANSPORTATION
 I-80/94/US 6
 KINGERY-BORMAN EXPRESSWAY
 BURNHAM ROAD TO US 41

RUSTICATION FINISH DETAILS
 SECTION 2626.2-R-2
 LAKE COUNTY, INDIANA
 STATION 8+235.100 TO STATION 8+412.491
 STRUCTURE NO. 016-W858

DATE 09/05

AMERICAN
 CONSULTING ENGINEERS