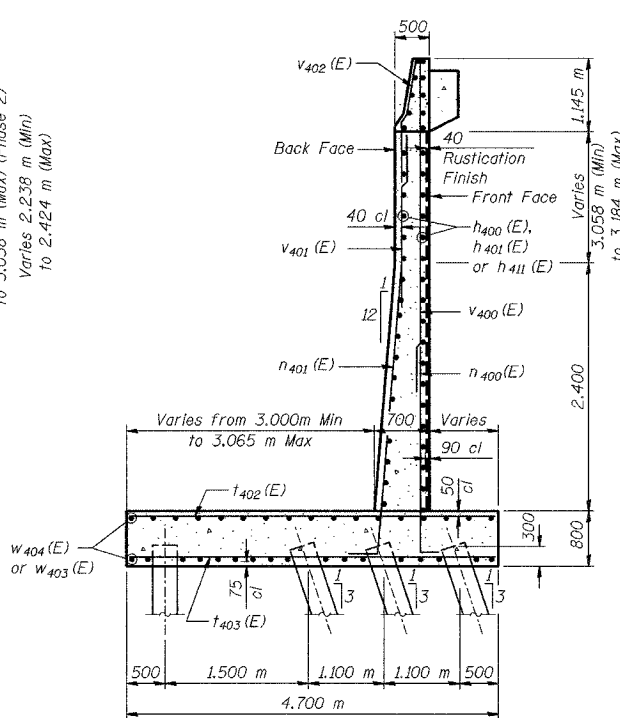
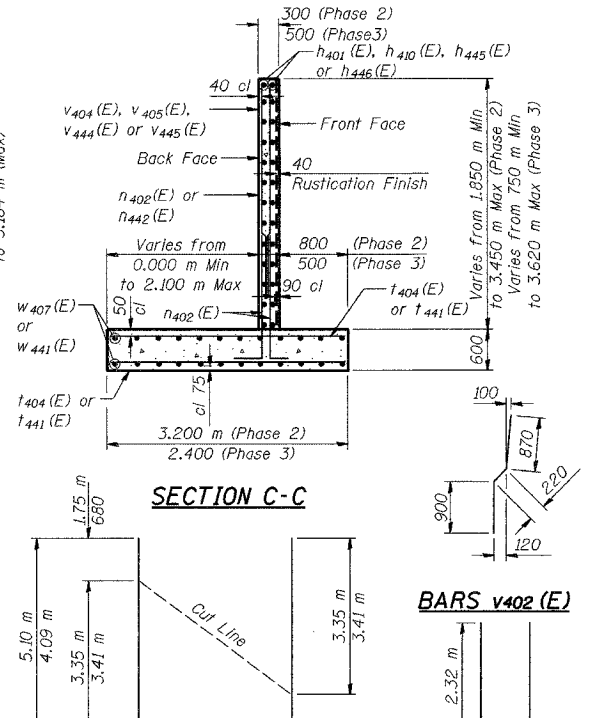


SECTION A-A

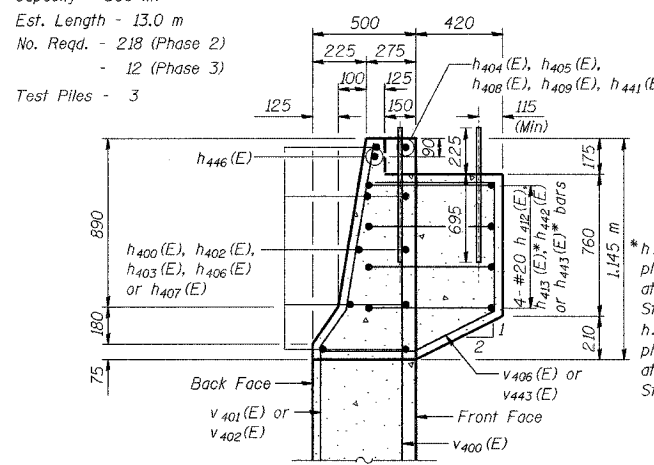


SECTION B-B

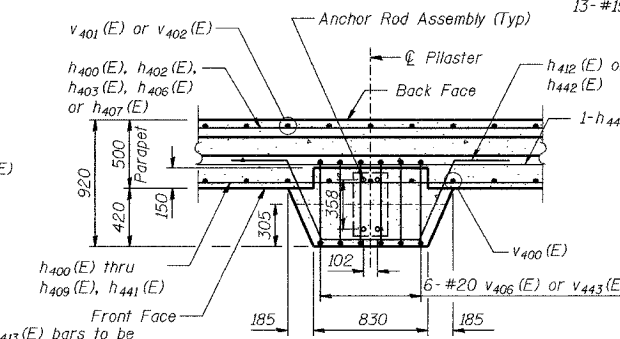


SECTION C-C

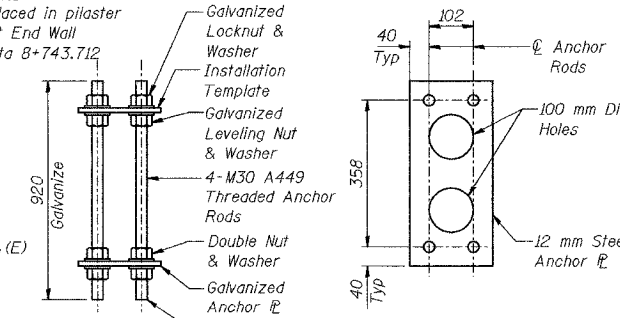
PILE DATA
 Type - 356 φ Metal Shell
 Capacity - 500 kN
 Est. Length - 13.0 m
 No. Req'd. - 218 (Phase 2)
 - 12 (Phase 3)
 Test Piles - 3



SECTION THRU PARAPET

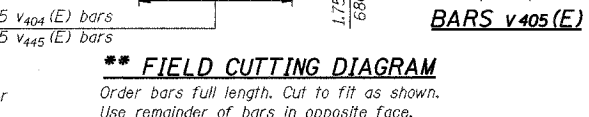


PILASTER SUPPORT - PLAN VIEW

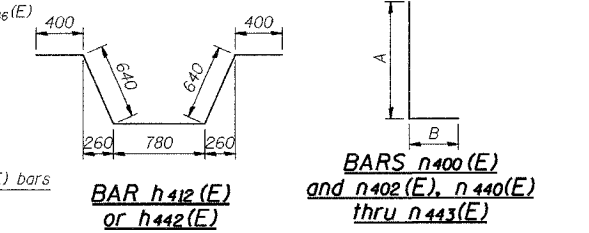


ELEVATION PLAN

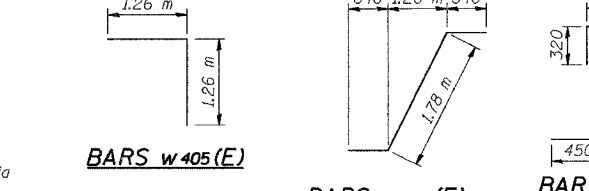
NOISE ABATEMENT WALL ANCHOR ROD ASSEMBLY
 (37 Req'd Phase 2)
 (3 Req'd Phase 3)



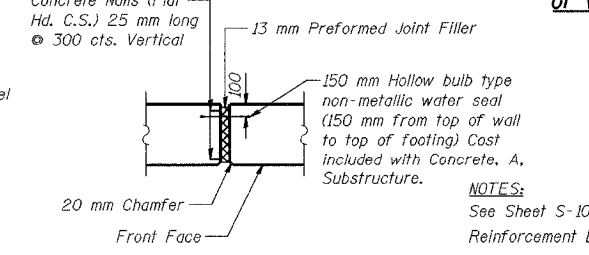
FIELD CUTTING DIAGRAM



BARS n400(E) and n402(E), n440(E) thru n443(E)



BARS w405(E) and w406(E)



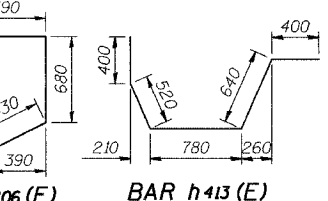
13 MM EXPANSION JOINT DETAIL

(PHASE 3) BILL OF MATERIAL

Bar	No.	Size	Length (m)	Shape
h440(E)	43	#15	8.15	—
h441(E)	2	#15	1.85	—
h442(E)	8	#20	2.86	—
h443(E)	4	#20	2.74	—
h444(E)	26	#15	5.50	—
h445(E)	2	#15	4.69	—
h446(E)	3	#15	2.11	—
n440(E)	29	#15	3.78	—
n441(E)	57	#20	3.84	—
n442(E)	40	#15	1.47	—
t440(E)	79	#20	3.80	—
t441(E)	40	#20	2.30	—
v440(E)	29	#15	3.76	—
v441(E)	29	#20	2.77	—
v442(E)	29	#20	1.99	—
v443(E)	18	#20	2.47	—
v444(E)	14	#15	3.42	—
v445(E)	13	#15	4.09	—
w440(E)	28	#20	7.24	—
w441(E)	18	#15	5.50	—

Excavation, Foundation, Unclassified	m ³	213.7
Concrete, A, Substructure	m ³	64.8
Reinforcing Bars, Epoxy Coated	kg	3,980
Surface Seal	L Sum	0.01
Pile, Concrete, Steel Shell Encased, 6.35 mm, 356 mm	m	156.0
Geocomposite Wall Drain	m ²	47
Pipe, Underdrain, Perf. 1.63 mm, 150 mm	m	14.0
Noise Abatement Wall Anchor Rod Assembly	Each	3
B Borrow	m ³	24.2
Structural Backfill	m ³	203.7
Masonry Coating	L Sum	0.03

The estimated Phase 3 Masonry Coating area is 222.0 m²
 The estimated Phase 3 Surface Seal area is 15.0 m²



BAR DIMENSIONS

Bar	A	B
n400(E)	3.20 m	260
n401(E)	3.20 m	400
n402(E)	2.33 m	260
n440(E)	3.52 m	260
n441(E)	3.52 m	320
n442(E)	1.21 m	260

(PHASE 2) BILL OF MATERIAL

Bar	No.	Size	Length (m)	Shape
h400(E)	174	#15	5.30	—
h401(E)	26	#15	5.00	—
h402(E)	409	#15	7.84	—
h403(E)	274	#15	7.10	—
h404(E)	28	#15	2.30	—
h405(E)	11	#15	1.10	—
h406(E)	9	#15	7.90	—
h407(E)	47	#15	7.04	—
h408(E)	2	#15	2.15	—
h409(E)	1	#15	1.90	—
h410(E)	2	#15	3.58	—
h411(E)	78	#20	7.90	—
h412(E)	144	#20	2.86	—
h413(E)	4	#20	2.74	—
n400(E)	452	#15	3.46	—
n401(E)	666	#25	3.60	—
n402(E)	46	#15	2.59	—
t400(E)	461	#25	3.80	—
t401(E)	541	#20	3.80	—
t402(E)	86	#25	4.60	—
t403(E)	56	#20	4.60	—
t404(E)	44	#20	3.10	—
v400(E)	457	#15	3.71	—
v401(E)	677	#20	3.86	—
v402(E)	677	#20	1.99	—
v403(E)	16	#15	3.35	—
v404(E)	16	#15	5.10	—
v405(E)	11	#20	5.04	—
v406(E)	222	#20	2.47	—
w400(E)	196	#15	8.76	—
w401(E)	140	#15	9.29	—
w402(E)	56	#15	7.85	—
w403(E)	34	#15	5.90	—
w404(E)	68	#15	4.98	—
w405(E)	28	#15	2.52	—
w406(E)	28	#15	3.06	—
w407(E)	48	#15	2.82	—

Excavation, Foundation, Unclassified	m ³	1,801
Concrete, A, Substructure	m ³	849.1
Reinforcing Bars, Epoxy Coated	kg	59,570
Surface Seal	L Sum	0.06
Pile, Concrete, Steel Shell Encased, 6.35 mm, 356 mm	m	2,834.0
Geocomposite Wall Drain	m ²	620
Pipe, Underdrain, Perf. 1.63 mm, 150 mm	m	145.0
Noise Abatement Wall Anchor Rod Assembly	Each	37

The estimated Phase 2 Surface Seal area is 207 m²

DESIGNED	KFA
CHECKED	BPS
DRAWN	MJB
CHECKED	GSP

CONSTRUCTION JOINT DETAIL

ILLINOIS DEPARTMENT OF TRANSPORTATION
 I-80/94/US 6
 KINGERY-BORMAN EXPRESSWAY
 BURNHAM ROAD TO US 41
WALL SECTIONS AND DETAILS
 SECTION 2626.2-R-1
 LAKE COUNTY, INDIANA
 STATION 8 + 735.576 TO STATION 8 + 748.936
 STRUCTURE NO. 016-W859
 DATE 09/05
AMERICAN
 CONSULTING ENGINEERS