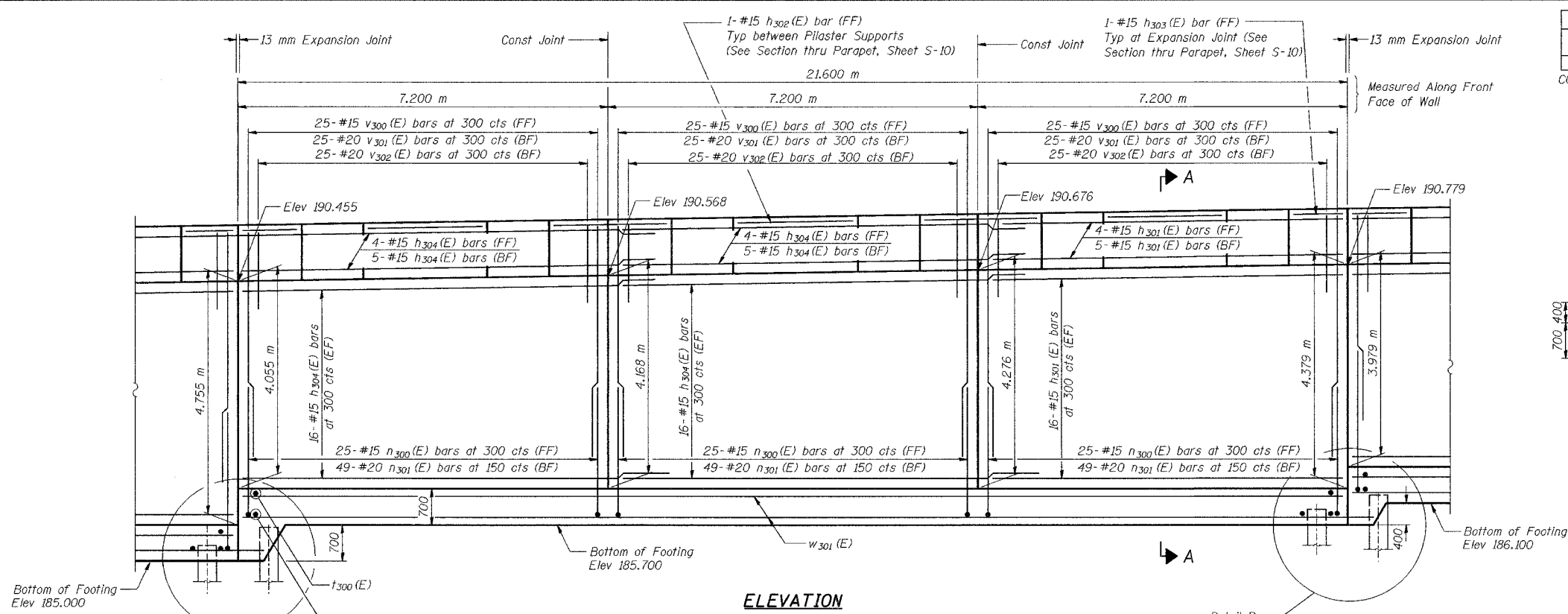
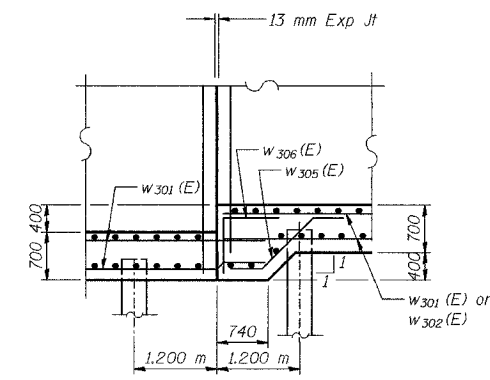


ROUTE NO.	SECTION	COUNTY	SHEET NO.	SHEET	SHEET NO. S-6 19 SHEETS
F.A.S. NO./A	ENGINEER	LAKE COUNTY, INDIANA	1207	903	
S.L. NUMBER		PROJECT			

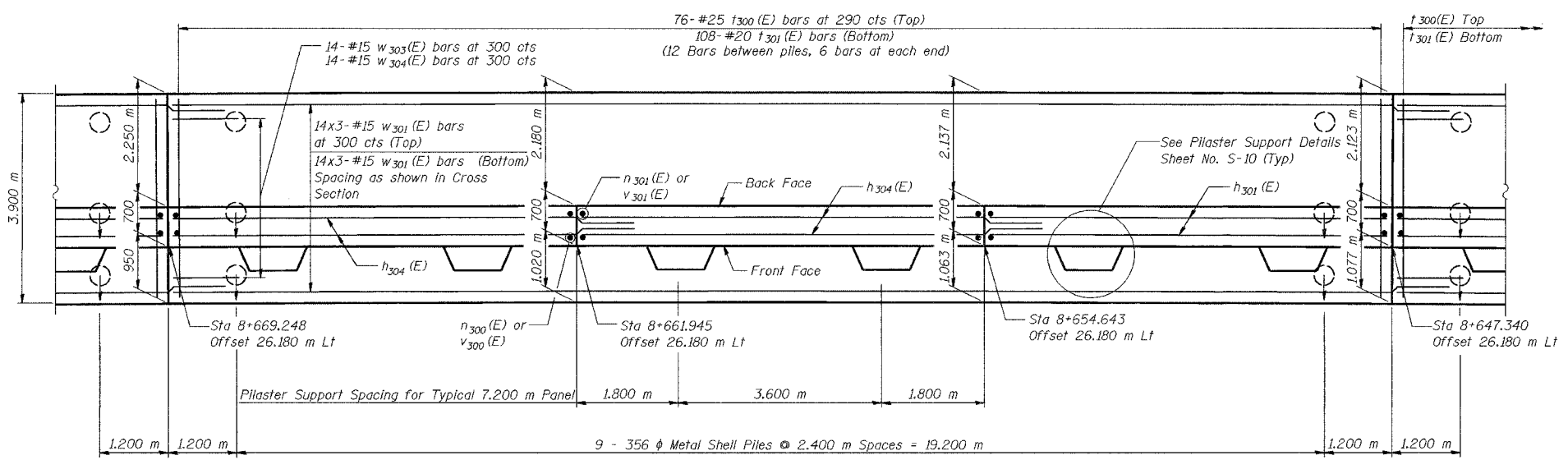
CONTRACT NO. 62114 INDOT DES. NO. 0100987



ELEVATION



DETAIL B



FOOTING PLAN

NOTES:
 See Sheet S-10 for Section A-A.
 See Sheet S-11 for Expansion Joint Detail and Bill of Material.
 See Sheet S-12 for Rustication details.
 Stations are referenced to \odot I-80/94.
 Reinforcement bars designated (E) shall be epoxy coated.
 All dimensions are in millimeters (mm) except as noted.
 Bars indicated thus 20 x 3-#15 etc. indicates 20 lines of bars with 3 lengths per line.

DESIGNED	KFA
CHECKED	BPS
DRAWN	MJB
CHECKED	GSP

MINIMUM BAR LAPS
 #15 bars = 640
 #20 bars = 790

LEGEND
 BF = Back Face
 FF = Front Face
 EF = Each Face

ILLINOIS DEPARTMENT OF TRANSPORTATION
 I-80/94/US 6
 KINGERY-BORMAN EXPRESSWAY
 BURNHAM ROAD TO US 41

PLAN AND ELEVATION (4 OF 7)
SECTION 2626.2-R-2
LAKE COUNTY, INDIANA
STATION 8+581.326 TO STATION 8+733.961
STRUCTURE NO. 016-W860

DATE 09/05

AMERICAN
 CONSULTING ENGINEERS