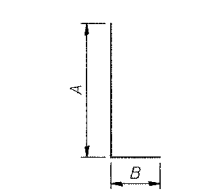
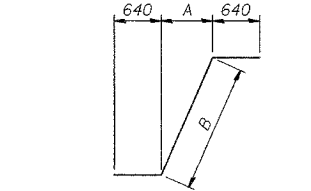


BAR h508(E)

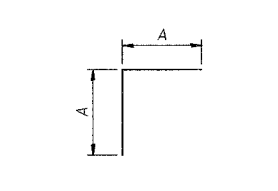
BAR h509(E)



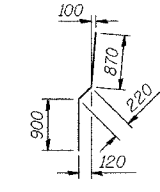
BARS n500(E) thru n510(E), t504(E) or v516(E)



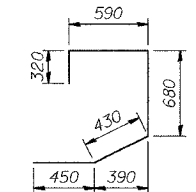
BARS w504(E), w506(E), w508(E), w510(E) or w512(E)



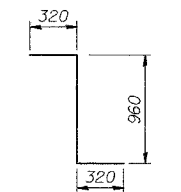
BARS w505(E), w507(E), w509(E), w511(E) or w513(E)



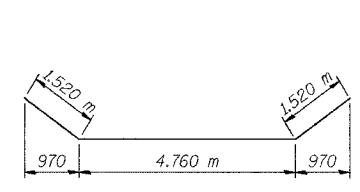
BARS v502(E)



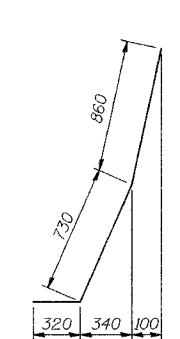
BAR v511(E)



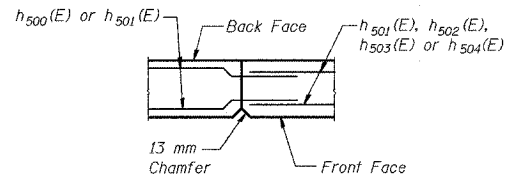
BAR v515(E)



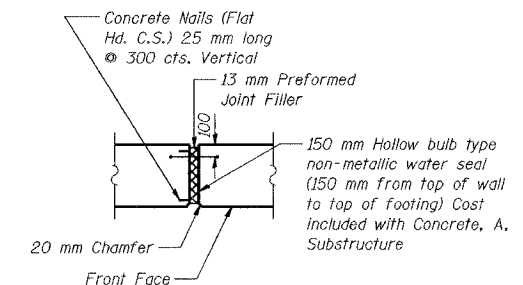
BAR h516(E)



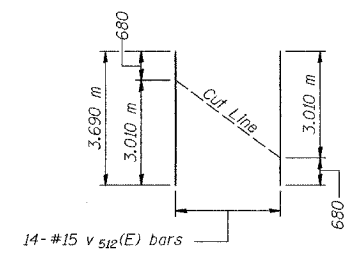
BAR v517(E)



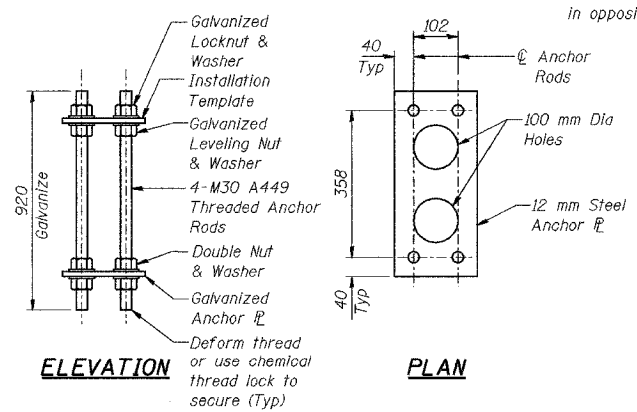
CONSTRUCTION JOINT DETAIL



13 MM EXPANSION JOINT DETAIL



FIELD CUTTING DIAGRAM



ELEVATION

PLAN

NOISE ABATEMENT WALL ANCHOR ROD ASSEMBLY

(43 Req'd)

DESIGNED	KFA
CHECKED	BPS
DRAWN	MJB
CHECKED	GSP

BAR DIMENSIONS

Bar	A	B
n500(E)	3.86 m	260
n501(E)	3.86 m	400
n502(E)	2.44 m	260
n503(E)	2.44 m	400
n504(E)	2.66 m	260
n505(E)	2.66 m	320
n506(E)	1.75 m	260
n507(E)	1.75 m	320
n508(E)	1.57 m	260
n509(E)	1.57 m	320
n510(E)	1.21 m	260
t504(E)	3.40 m	320
v516(E)	1.51 m	260
w504(E)	870	1.23 m
w505(E)	870	-
w506(E)	770	1.09 m
w507(E)	770	-
w508(E)	1.07 m	1.51 m
w509(E)	1.07 m	-
w510(E)	970	1.37 m
w511(E)	970	-
w512(E)	1.27 m	1.80 m
w513(E)	1.27 m	-

BILL OF MATERIAL

Bar	No.	Size	Length (m)	Shape
h500(E)	43	#15	8.35	—
h501(E)	783	#15	7.84	—
h502(E)	391	#15	7.10	—
h503(E)	30	#15	4.24	—
h504(E)	24	#15	5.37	—
h505(E)	33	#15	2.30	—
h506(E)	13	#15	1.10	—
h507(E)	3	#15	1.67	—
h508(E)	168	#20	2.86	—
h509(E)	4	#20	2.74	—
h510(E)	2	#15	4.89	—
h512(E)	208	#15	9.64	—
h513(E)	96	#15	8.90	—
h514(E)	16	#15	6.98	—
h515(E)	32	#15	0.60	—
h516(E)	16	#15	7.80	—
h517(E)	43	#15	2.11	—
n500(E)	227	#15	4.12	—
n501(E)	445	#25	4.26	—
n502(E)	300	#15	2.70	—
n503(E)	300	#25	2.84	—
n504(E)	241	#15	2.92	—
n505(E)	472	#20	2.98	—
n506(E)	125	#15	2.01	—
n507(E)	125	#20	2.07	—
n508(E)	69	#15	1.83	—
n509(E)	69	#20	1.89	—
n510(E)	42	#15	1.47	—
t500(E)	1253	#20	3.80	—
t501(E)	855	#25	3.80	—
t502(E)	403	#20	3.20	—
t503(E)	42	#20	2.20	—
t504(E)	1207	#20	3.72	—
t505(E)	614	#20	3.40	—
v500(E)	227	#15	3.33	—
v501(E)	227	#20	2.34	—
v502(E)	962	#20	1.99	—
v503(E)	300	#15	3.40	—
v504(E)	300	#20	2.40	—
v505(E)	241	#15	3.09	—
v506(E)	241	#20	2.09	—
v507(E)	125	#15	2.70	—
v508(E)	125	#20	1.71	—
v509(E)	69	#15	2.42	—
v510(E)	69	#20	1.42	—
v511(E)	318	#20	2.47	—
v512(E)	14	#15	3.69	—
v513(E)	14	#15	3.16	—
v514(E)	614	#15	1.24	—
v515(E)	614	#20	1.60	—
v516(E)	614	#15	1.77	—

ROUTE NO.	SECTION	COUNTY	SHEET	SHEET NO. S-20
2626.2-R-2	LAKE COUNTY, INDIANA	1207	936	29 SHEETS

CONTRACT NO. 62114 INDOT DES. NO. 0100987

Bar	No.	Size	Length (m)	Shape
v517(E)	614	#15	1.91	—
w500(E)	140	#15	9.24	—
w501(E)	420	#15	7.85	—
w502(E)	224	#15	8.39	—
w503(E)	168	#15	8.62	—
w504(E)	28	#15	2.51	—
w505(E)	28	#15	1.74	—
w506(E)	14	#15	2.37	—
w507(E)	14	#15	1.54	—
w508(E)	14	#15	2.79	—
w509(E)	14	#15	2.14	—
w510(E)	14	#15	2.65	—
w511(E)	14	#15	1.94	—
w512(E)	14	#15	3.08	—
w513(E)	14	#15	2.54	—
w514(E)	18	#15	5.90	—
w515(E)	338	#15	9.64	—
w516(E)	156	#15	8.90	—
w517(E)	26	#15	6.98	—
w518(E)	28	#15	7.10	—

Test Pile, 356 mm	Each	3
Excavation, Foundation, Unclassified	m ³	1,879.3
Concrete, A, Substructure	m ³	1,635.6
Reinforcing Bars, Epoxy Coated	kg	127,720
Surface Seal	L Sum	0.08
Pile, Concrete, Steel Shell Encased, 6.35 mm, 356 mm	m	1,421.5
Geocomposite Wall Drain	m ²	700
Pipe, Underdrain, Perf, 1.63 mm, 150 mm	m	282.7
Noise Abatement Wall Anchor Rod Assembly	Each	43
Overhead Sign Structure - Span, Anchor Rod Assembly	Each	2
B Borrow	m ³	620.3
Structural Backfill	m ³	1997.7
Masonry Coating	L Sum	0.20

The estimated Surface Seal area is 1304.1 m²
The estimated Masonry Coating area is 1304.1 m²

NOTES:
See Sheet S-19 for Wall and Parapet Sections
See Sheet S-21 for Rustication details.
Reinforcement bars designated (E) shall be epoxy coated.
All dimensions are in millimeters (mm) except as noted.
See Typical Section on Sheet S-2 for Drainage Details and Surface Seal Limits.

ILLINOIS DEPARTMENT OF TRANSPORTATION
I-80/94/US 6
KINGERY-BORMAN EXPRESSWAY
BURNHAM ROAD TO US 41
WALL SECTIONS AND DETAILS (2 OF 2)
SECTION 2626.2-R-2
LAKE COUNTY, INDIANA
STATION 8+774.073 TO STATION 9+227.203
STRUCTURE NO. 016-W861
DATE 09/05
AMERICAN
CONSULTING ENGINEERS