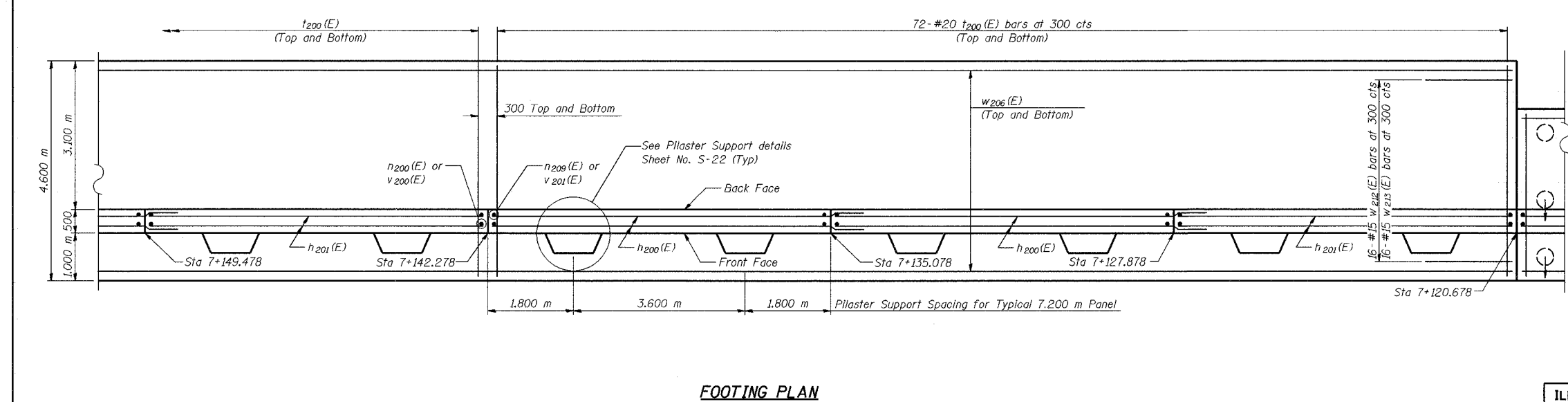
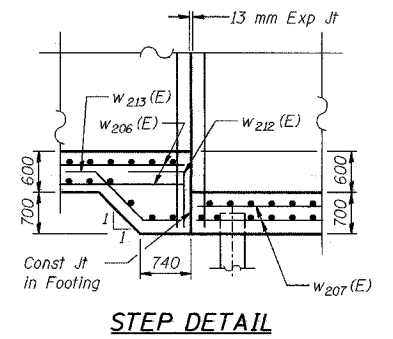
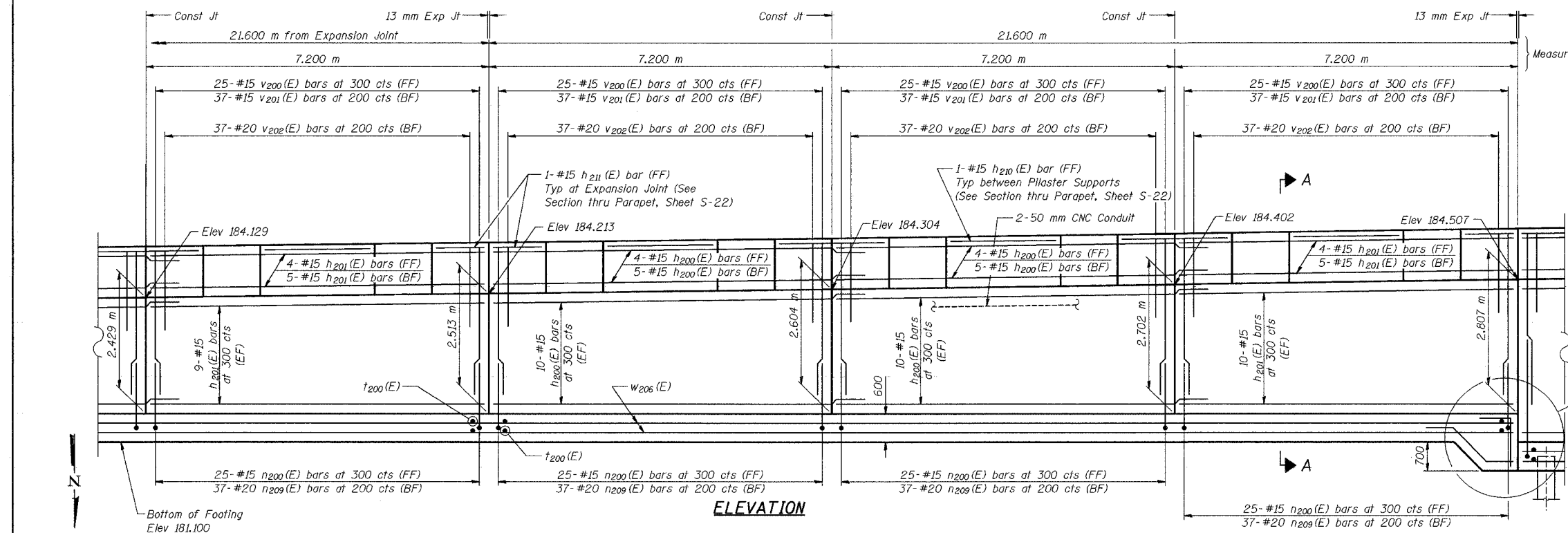


| | | | | |
|--------------------|-----------|--------|-----------|-------|
| ROUTE NO. | SECTION | COUNTY | SHEET NO. | SHEET |
| F.A.I. 80/94 | 2001-167R | COOK | 1207 | 993 |
| SHEET NO. S-11 | | | | |
| 35 SHEETS | | | | |
| CONTRACT No. 62114 | | | | |



NOTES:

See Sheet S-22 for Section A-A, Pilaster Support details, and Bill of Material.

See Sheet S-23 for Rustication details and Expansion Joint Detail.

Stations are referenced to @ I-80/94.

Reinforcement bars designated (E) shall be epoxy coated.

All dimensions are in millimeters (mm) except as noted.

See Electrical Drawings for Junction Box and Conduit Details.

| | |
|----------|-----|
| DESIGNED | BHS |
| CHECKED | KFA |
| DRAWN | MJB |
| CHECKED | GSP |

MINIMUM BAR LAPS

#15 bars = 640
#20 bars = 790
#25 bars = 1320

LEGEND

BF = Back Face
FF = Front Face
EF = Each Face

ILLINOIS DEPARTMENT OF TRANSPORTATION
F.A.I. ROUTE 80/94 AND U.S. ROUTE 6
LOCAL ROAD RECONSTRUCTION

PLAN AND ELEVATION (9 OF 19)
SECTION 2001-167R
COOK COUNTY
STATION 6+850.000 to STATION 7+379.000
STRUCTURE NO. 016-W874

DATE 07/05

AMERICAN
CONSULTING ENGINEERS

FOR INFORMATION ONLY