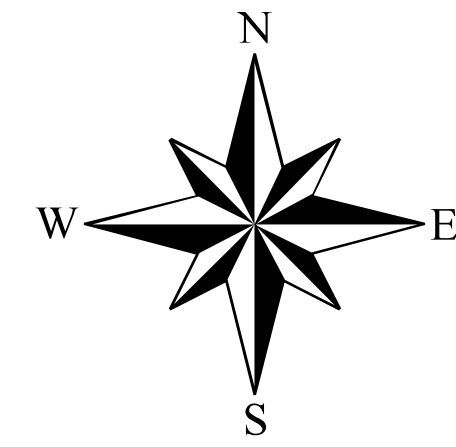


**GENERAL HIGHWAY MAP**  
**Coe Township**  
 Rock Island County  
 ILLINOIS



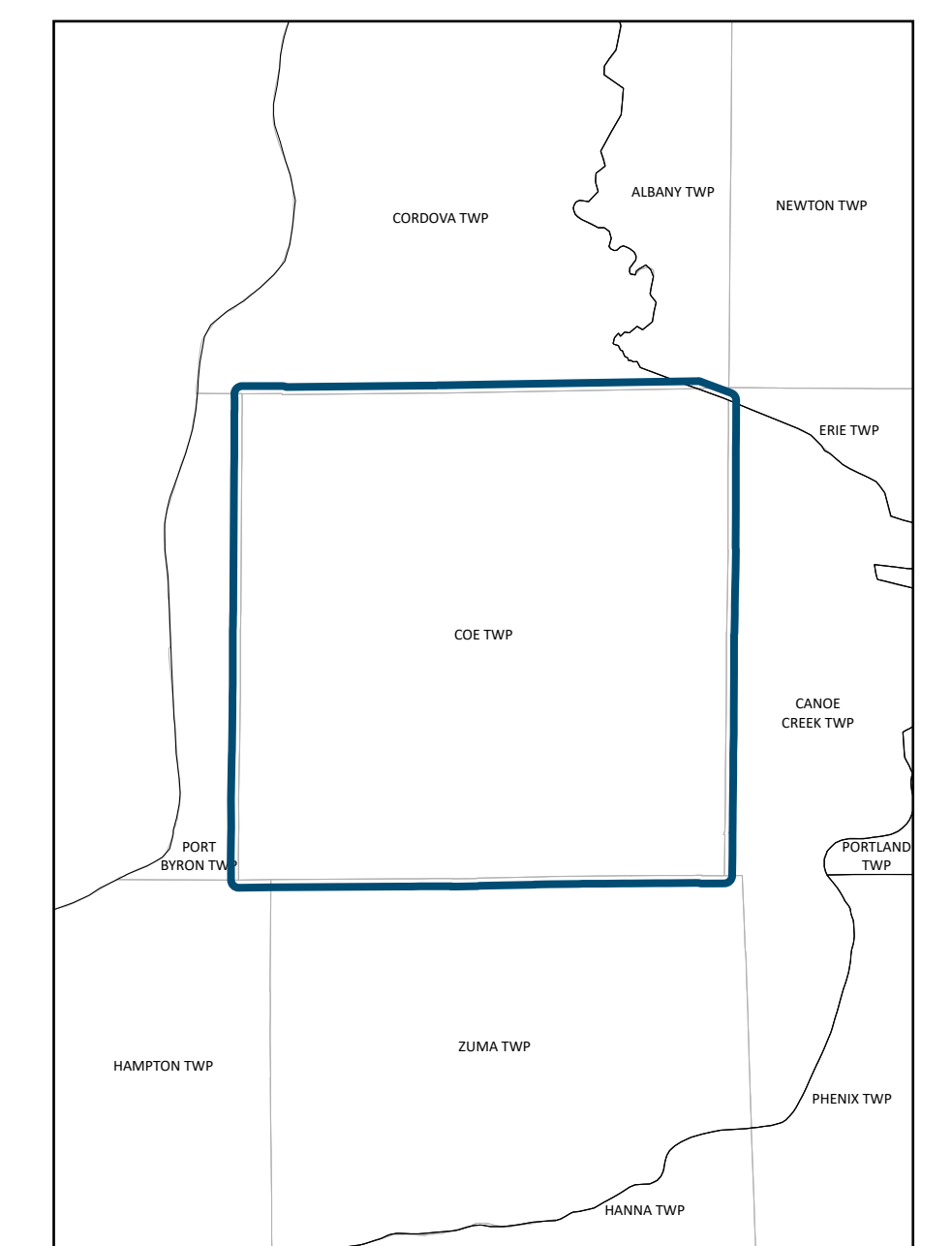
PREPARED BY THE  
 ILLINOIS DEPARTMENT OF TRANSPORTATION  
 OFFICE OF PLANNING AND PROGRAMMING

IN COOPERATION WITH  
 U.S. DEPARTMENT OF TRANSPORTATION  
 FEDERAL HIGHWAY ADMINISTRATION



**Legend**

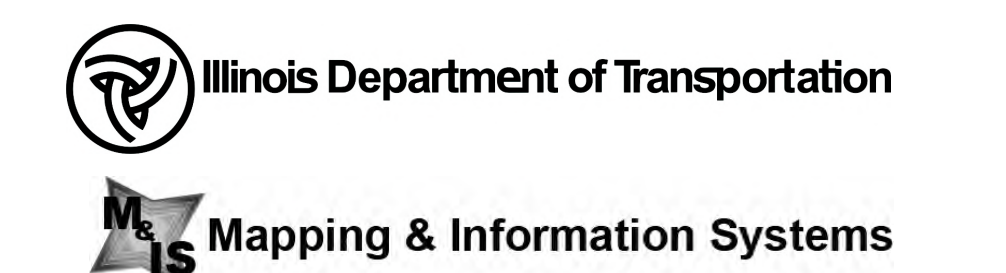
- Incorporated City / Town / Village
- Water
- Structure
- Interstate, U.S. State Route
- County Highway Route
- Paved (Undivided)
- Bituminous (High Type)
- Bituminous (Low Type)
- Gravel and Stone
- All Other Roads
- Railroad
- State Boundary
- County Boundary
- Towns Boundary
- Meridian Baseline
- Section Line
- Civil Township or Road District
- Survey Township



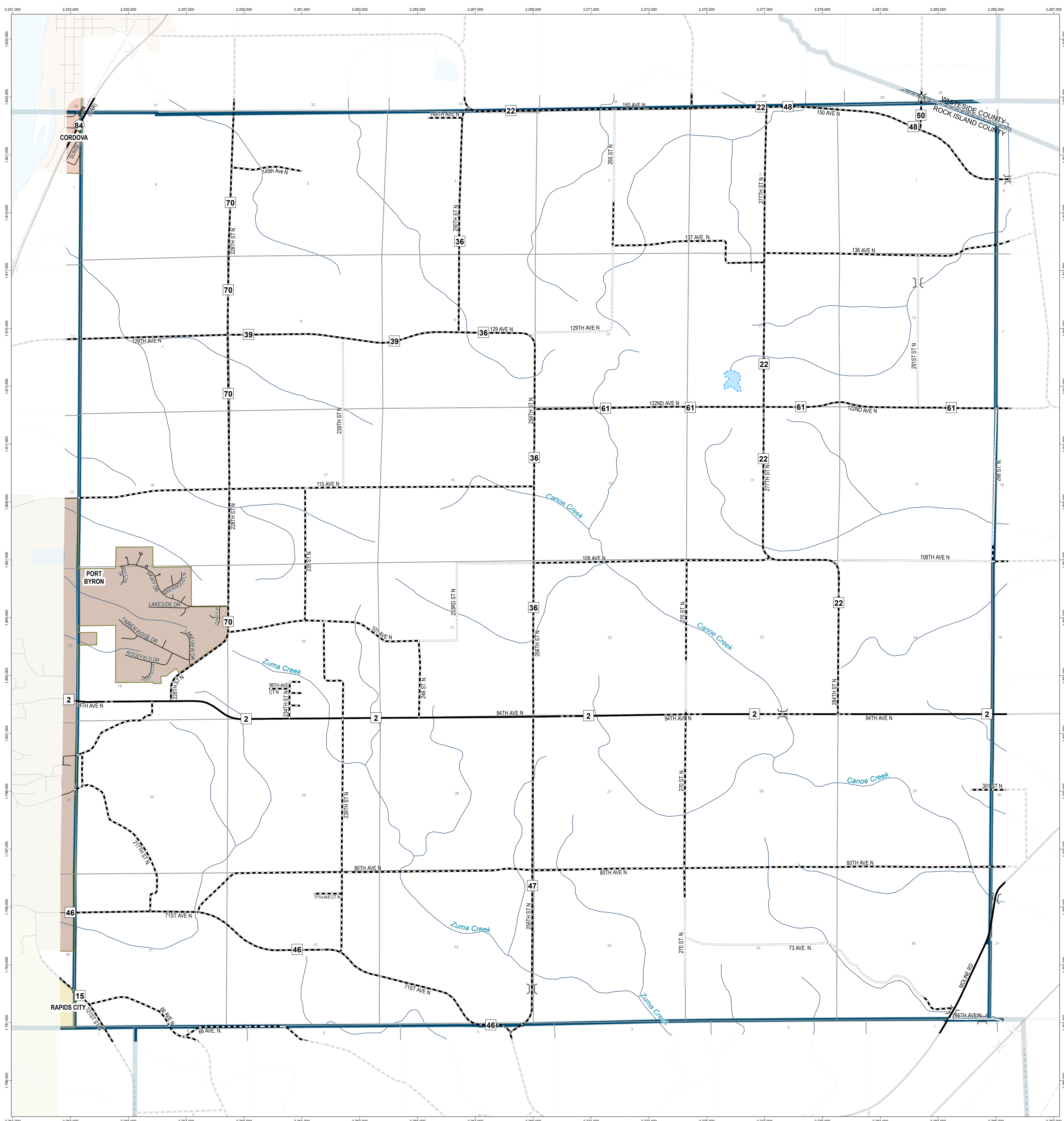
**Data Sources:**

- Illinois Department of Transportation
- Illinois State Tollway Authority
- Illinois Department of Natural Resources
- Illinois Commerce Commission
- Illinois Department of Revenue
- Illinois State Geological Survey
- Illinois State Police
- United States Department of Agriculture
- United States Department of Transportation
- United States Geological Survey

THE ILLINOIS DEPARTMENT OF TRANSPORTATION'S MAPS USE DATA FROM EXTERNAL ELECTRONIC SOURCES THAT ARE NOT CONTROLLED BY THE ILLINOIS DEPARTMENT OF TRANSPORTATION. THE DEPARTMENT TAKES NO RESPONSIBILITY FOR THE VIEWS, CONTENT, OR ACCURACY FOR ANY SUCH INFORMATION PROVIDED FROM SUCH EXTERNAL SOURCES. THIS PRODUCT IS FOR REFERENCE PURPOSES ONLY AND IS NOT TO BE CONSTRUED AS A LEGAL DOCUMENT OR SURVEY INSTRUMENT. THE MAPS AND DATA CONTAINED HEREIN ARE TO BE CONSTRUED AS IS WITHOUT WARRANTIES OF ANY KIND, EITHER EXPRESSED OR IMPLIED, INCLUDING BUT NOT LIMITED TO WARRANTIES OF SUITABILITY TO A PARTICULAR PURPOSE OR USE. ANY RELIANCE ON THE INFORMATION CONTAINED HEREIN IS AT THE USER'S OWN RISK. THE ILLINOIS DEPARTMENT OF TRANSPORTATION CAN NOT BE HELD LIABLE FOR ANY SPECIAL, INDIRECT, OR CONSEQUENTIAL DAMAGES OR ANY DAMAGES WHATSOEVER RESULTING FROM LOSS OF USE, DATA, PROFITS, WHETHER IN AN ACTION OF CONTRACT, NEGLIGENCE, OR OTHER ACTION, ARISING OUT OF OR IN CONNECTION WITH THE USE OF THE INFORMATION HEREIN PROVIDED.



Last Revised: 7/5/2023 2:31 PM



Polyconic Projection 5,000 foot grid based on Illinois State Plane Coordinates (West Zone) and grid coordinates based on WGS84