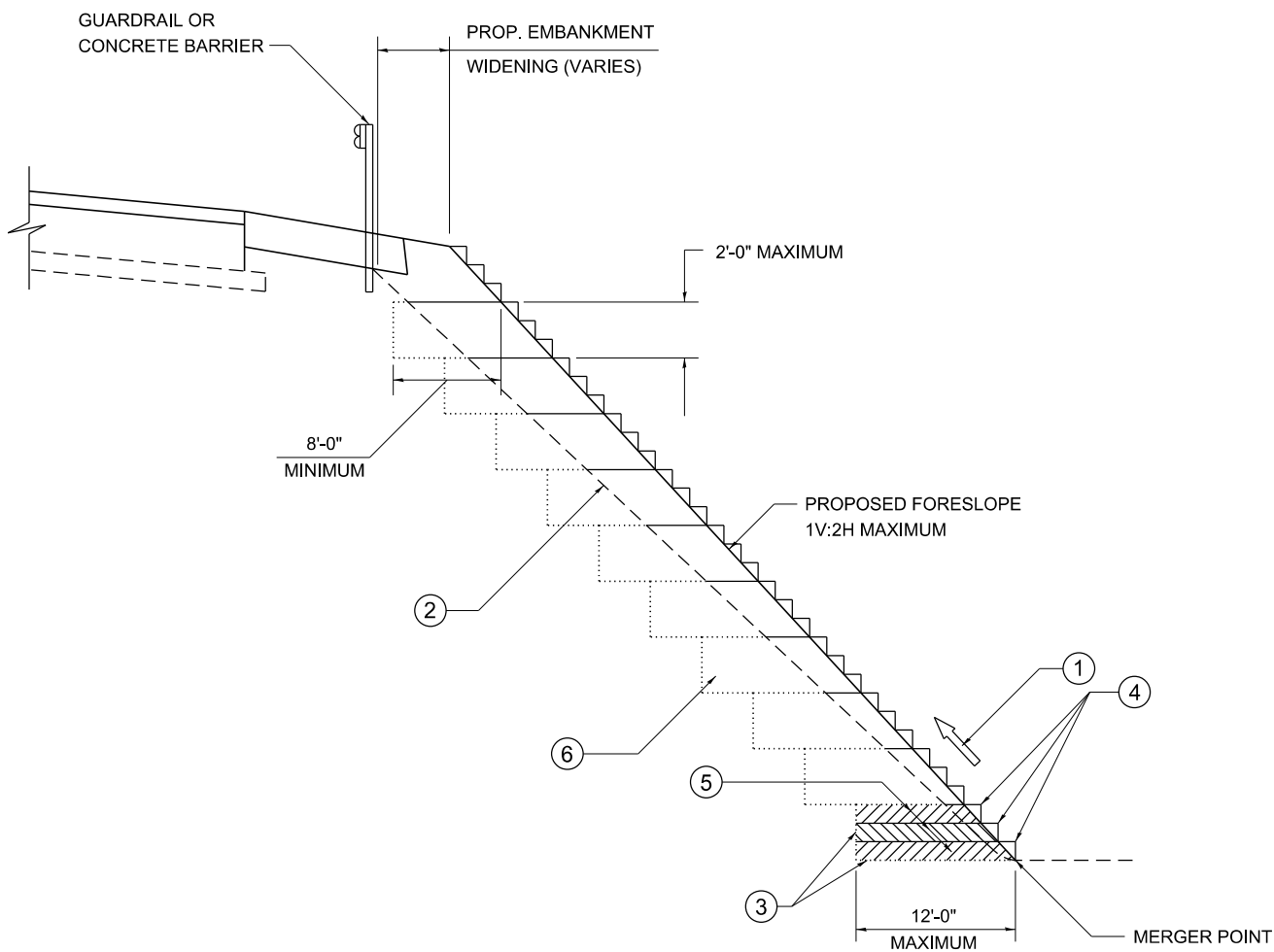


SETTLEMENT PLATFORM DETAIL

204-1

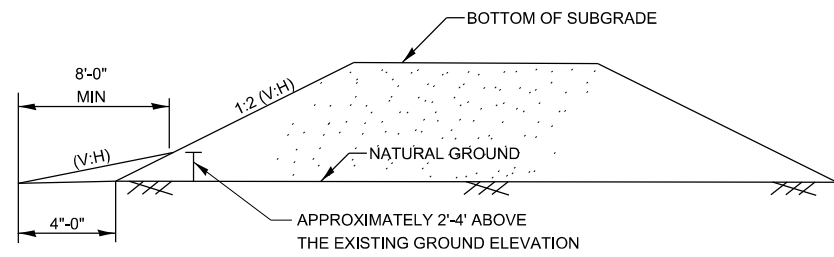


TYPICAL BENCHING DETAIL FOR EMBANKMENT

NOTES:

- ① CONSTRUCT SUCCEEDING BENCH CUTS AND EMBANKMENT PLACEMENT AND COMPACTION FROM BOTTOM TO TOP IN STAIRSTEP FASHION.
- ② EXISTING FORESLOPE PREPARED IN ACCORDANCE WITH ARTICLE 205.03 OF THE STANDARD SPECIFICATIONS.
- ③ BENCH CUT EXISTING SLOPE TYPICAL FOR EACH STEP.
- ④ TRIM TO FINAL SLOPE.
- ⑤ EQUAL 8-INCH LIFTS OF EMBANKMENT COMPACTED IN ACCORDANCE WITH ARTICLE 205.05 OF THE STANDARD SPECIFICATIONS.
- ⑥ EXCAVATION OF BENCH CUTS WITHIN EXISTING EMBANKMENT WILL BE INCLUDED IN THE COST OF FURNISHED EXCAVATION.
- ⑦ SLOPES SHALL BE BENCHED ACCORDING TO THIS DETAIL WHEN THE SLOPE IS STEEPER THAN 1V:4H AND THE HEIGHT IS GREATER THAN 5'.

ALL DIMENSIONS ARE IN INCHES UNLESS OTHERWISE SHOWN.



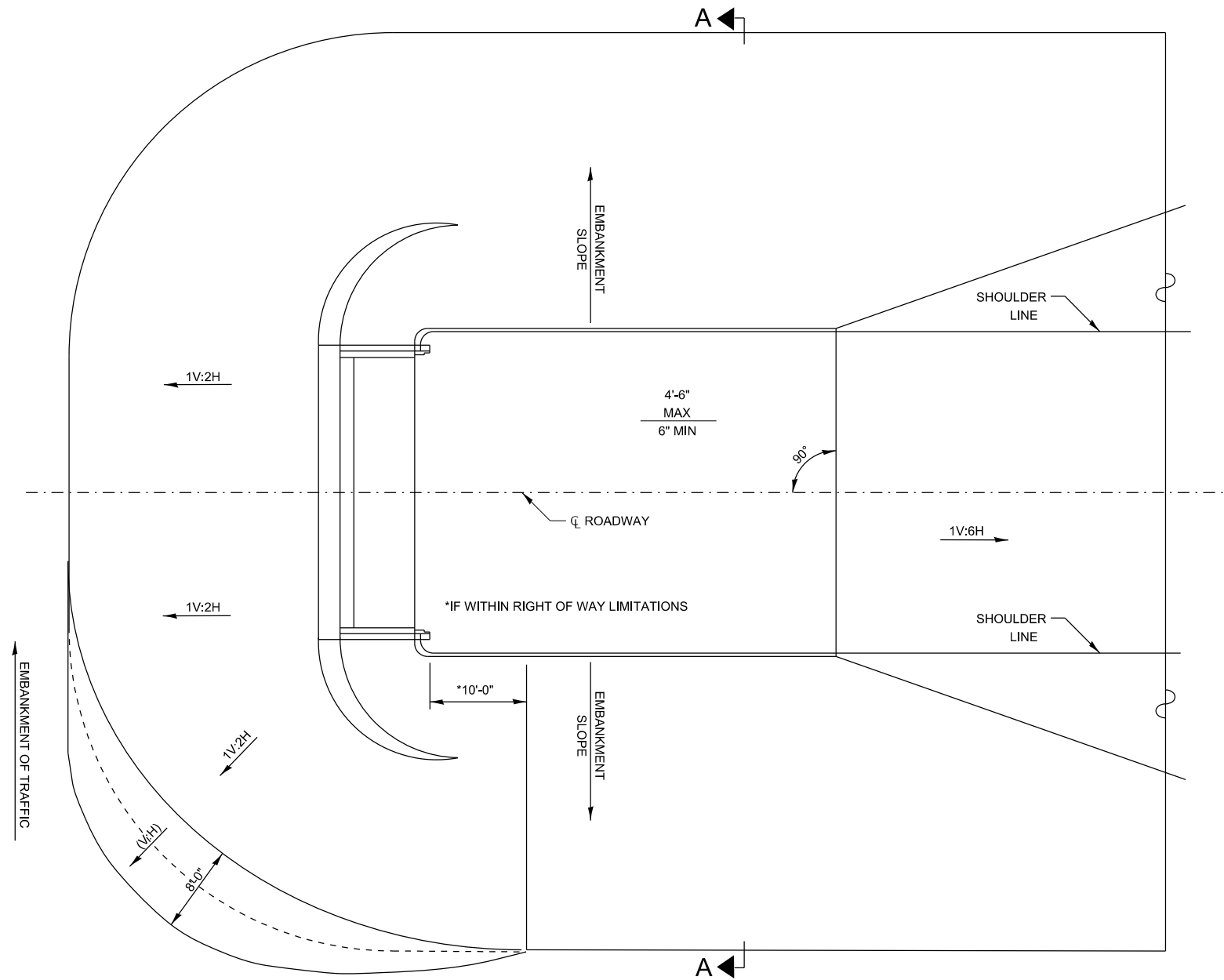
SECTION A-A

NOTES:

- APPLIES TO STRAIGHT OR SKEWED SINGLE STRUCTURES.
- UNDER RESTRICTIVE CONDITIONS, A 1:4 CAN BE USED FOR ANY FACILITY TYPE. SEE FIGURES 3.14.1-1 AND 3.14.1-2 OF THE BRIDGE MANUAL.
- PER BDE 38-4.C, THE RECOMMENDED TRANSVERSE SLOPES ARE AS FOLLOWS.

TYPE OF FACILITY	DESIRABLE (V:H)	ACCEPTABLE (V:H)
FREEWAYS	1:10	1:6
RURAL NON-FREEWAYS*	1:10	1:6
URBAN NON-FREEWAYS*	1:6	1:4
URBAN NON-FREEWAYS**	1:6	1:4

* DESIGN SPEED (V) GREATER THAN OR EQUAL TO 50 MPH.
 ** DESIGN SPEED (V) LESS THAN OR EQUAL TO 45 MPH.



EMBANKMENT CONE DETAIL

205-5

MODEL det 3 details
 FILE Name: p:\illinois\paw.bentley.com\PI\DOT\Documents\DOT Offices\District 3\Standards - District 3\DETAILS\DISTRICT 3 STANDARD DETAILS.DGN\200-209 EARTHWORK - LANDSCAPING - EROSION.dgn

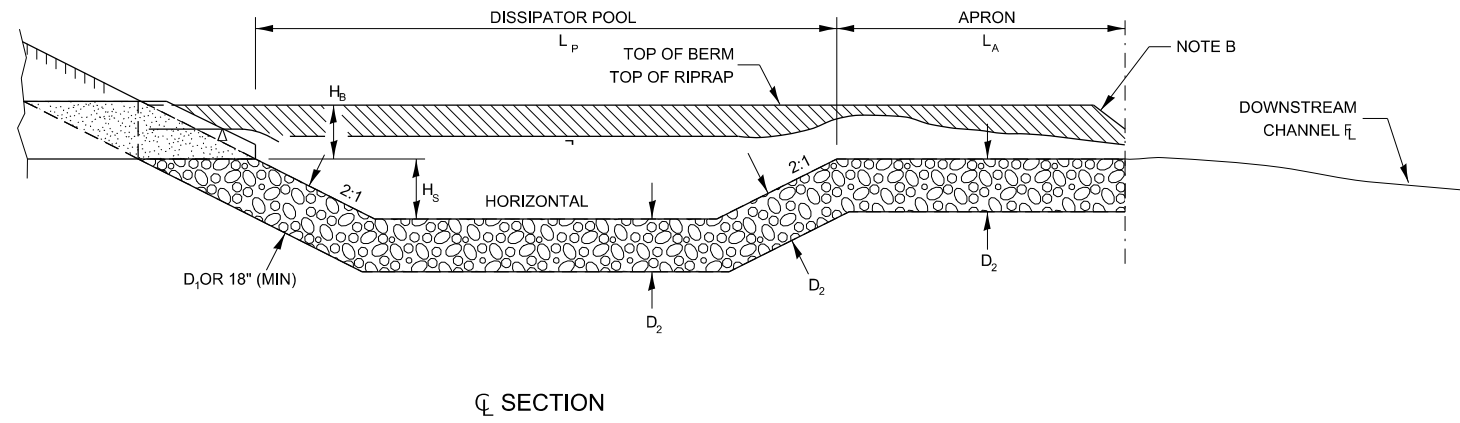
USER NAME = ronald.pohar	DESIGNED -	REVISED -
	DRAWN -	REVISED -
PLOT SCALE = 100,000 ' / in.	CHECKED -	REVISED -
PLOT DATE = 3/14/2024	DATE -	REVISED -

STATE OF ILLINOIS
 DEPARTMENT OF TRANSPORTATION

SCALE: SHEET OF SHEETS STA. TO STA.

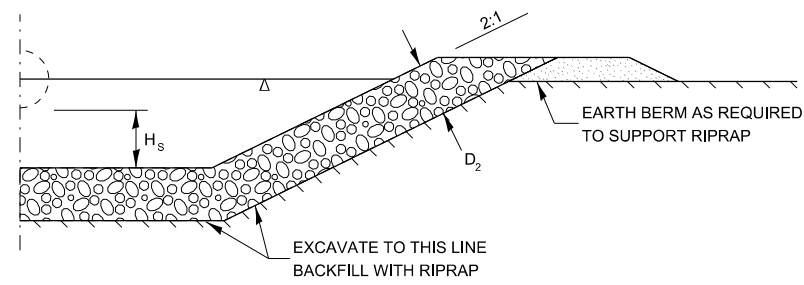
F.A. RTE.	SECTION	COUNTY	TOTAL SHEETS	SHEET NO.
CONTRACT NO.				
ILLINOIS FED. AID PROJECT				

MODEL det 3 details
 FILE Name: p:\illinois\paw.bentley.com\PI\DOT\Documents\DOT Offices\District 3\Standards - District 3\DETAILS\DISTRICT 3 STANDARD DETAILS.DGN\200-299 EARTHWORK - LANDSCAPING - EROSION.dgn

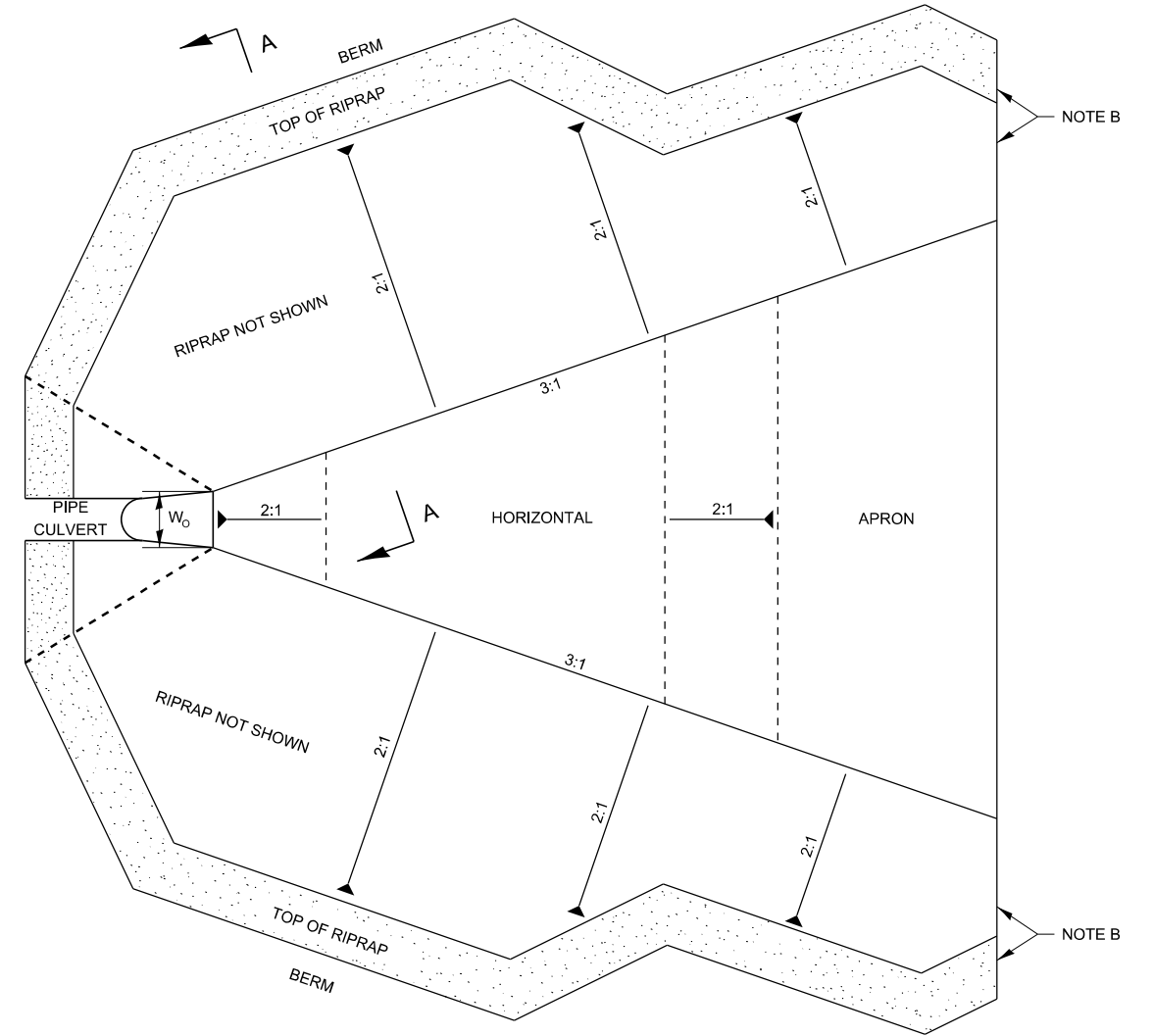


STATION	W ₀	L _P	L _A	H _S	H _B	D ₁	D ₂

NOTE B: WARP BASIN TO CONFORM TO NATURAL STREAM CHANNEL.



SECTION A-A



TOP VIEW

RIPWRAPPED CULVERT ENERGY BASIN DETAIL

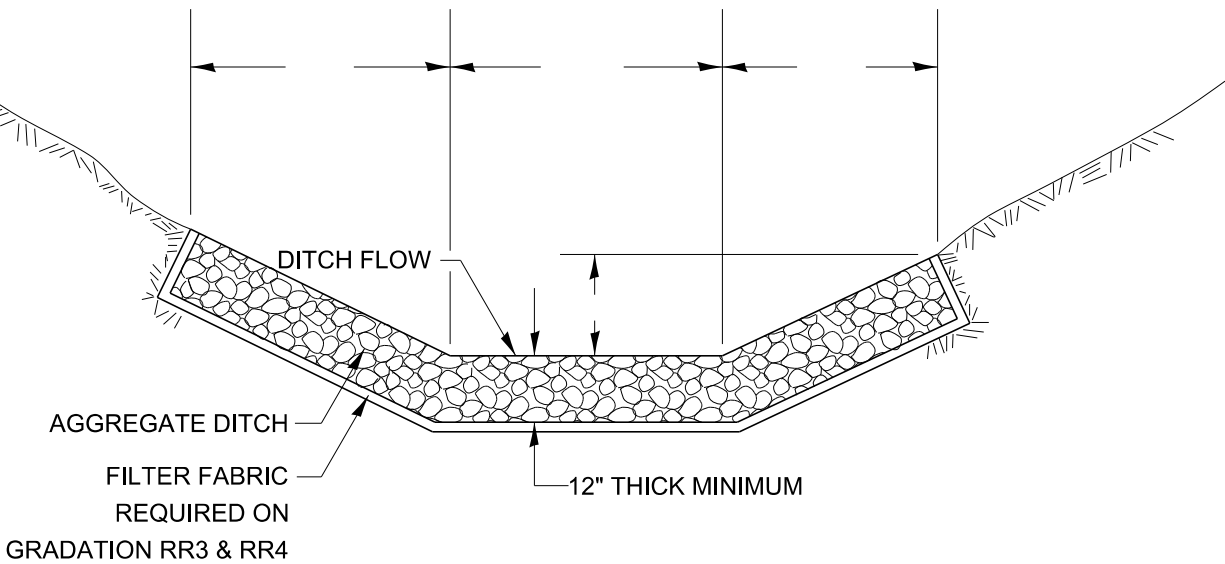
281-1

USER NAME = ronald.pohar	DESIGNED -	REVISED -
	DRAWN -	REVISED -
PLOT SCALE = 100,000 ' / in.	CHECKED -	REVISED -
PLOT DATE = 3/14/2024	DATE -	REVISED -

STATE OF ILLINOIS
DEPARTMENT OF TRANSPORTATION

SCALE: SHEET OF SHEETS STA. TO STA.

F.A. RTE.	SECTION	COUNTY	TOTAL SHEETS	SHEET NO.
CONTRACT NO.				
ILLINOIS FED. AID PROJECT				



CLASS WILL BE REQUIRED ON THIS PROJECT AT THE LOCATION SHOWN ON THE PLANS.

AGGREGATE DITCH FOR FLEXIBLE DITCH LINING

DESIGNER NOTES:

- 1) CLASS A3 OR A4 CAN BE USED FOR DITCH LINING. USE A4 FOR VELOCITIES GREATER THAN 12 FPS. A3 MAY BE USED AS AN ALTERNATE TO FIBERMAT.
- 2) INCLUDE PAY ITEM FOR FILTER FABRIC FOR USE WITH RIPRAP. NOTE THE SPECIFICATION BOOK DOES NOT REQUIRE FABRIC ON A3 BUT INCLUDE IT WHEN USING THIS STANDARD.
- 3) EXAMPLE: CLASS A4 MEANS A QUALITY AND GRADATION RR 3. SEE ARTICLE 1005.01 FOR SIZE.
- 4) REMEMBER TO FILL IN THE DIMENSIONS ON THE DITCH SECTION ABOVE.
- 5) ADD THE CLASS A3 OR A4 TO THE NOTE ON THE BOTTOM RIGHT.