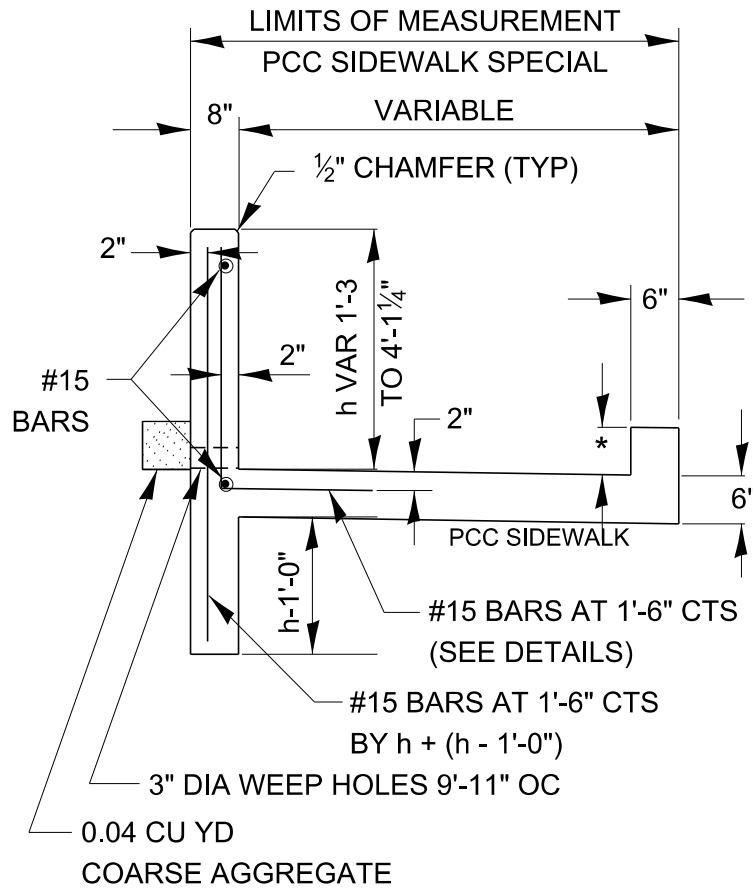


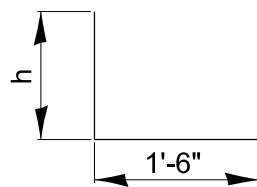
TYPE 1

APPLIED AT LOCATIONS WHERE WALL
HEIGHT VARIES FROM 6" TO 1'-3"



TYPE 2

APPLIED AT LOCATIONS WHERE WALL
HEIGHT VARIES FROM 1'-3" TO 4'-1 1/4"



BENT BAR DETAIL

* HEIGHT VARIES AS PER STANDARD 424001.

NOTE: PREFORMED EXPANSION JOINT FILLER SHALL BE PLACED ALONG THE ENTIRE JOINT AT LOCATIONS WHERE THE PCC SIDEWALK SPECIAL CHANGES FROM TYPE 1 TO TYPE 2. PREFORMED EXPANSION JOINT FILLER SHALL COMPLY WITH SECTION 1051 OF THE STANDARD SPECIFICATIONS. COST INCIDENTAL TO PCC SIDEWALK 6" SPECIAL.

PCC SIDEWALK SPECIAL WITH RETAINING WALL

424-31