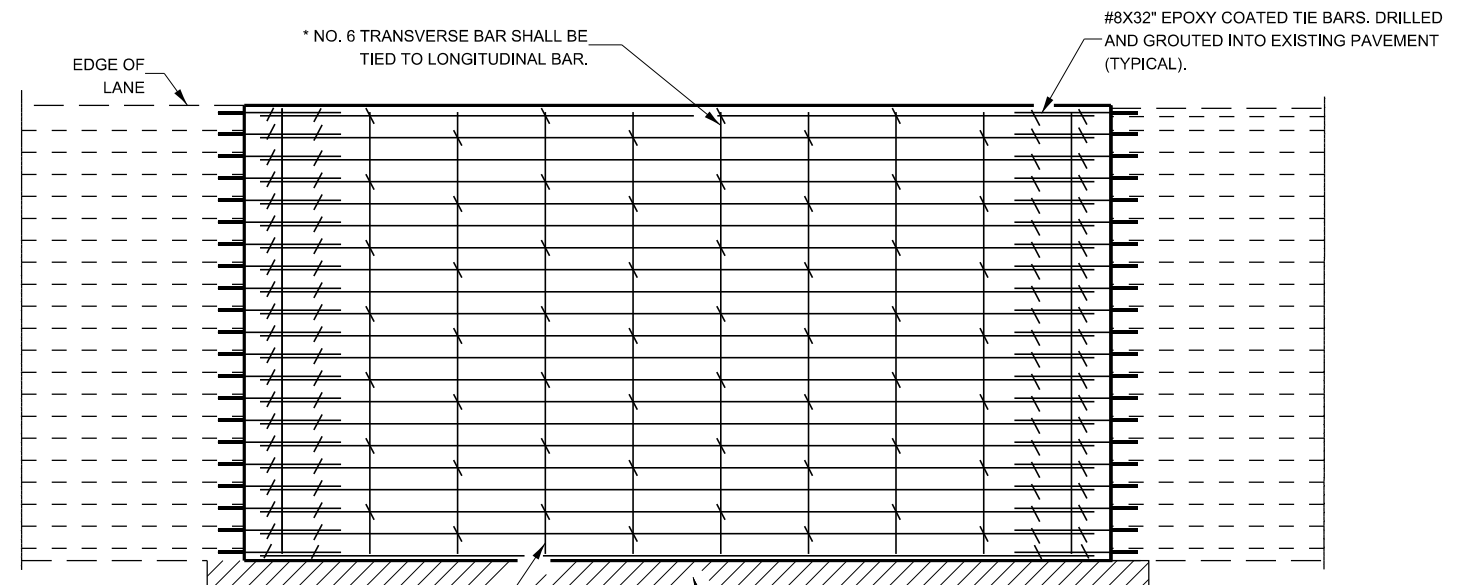
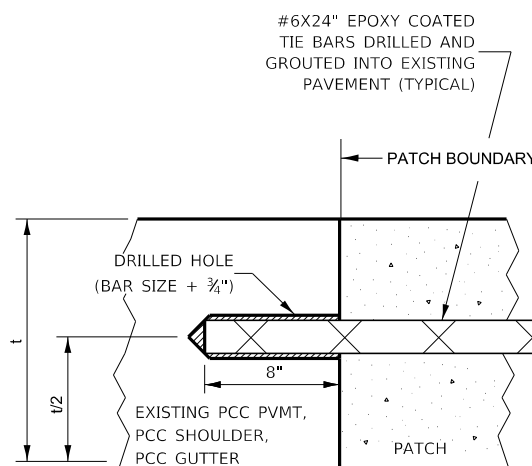


PAVEMENT SAWING DETAIL FOR CLASS A PATCHING (CRC PAVEMENT)



TRANSVERSE REBAR SHALL EXTEND TO OUTER LONGITUDINAL REBAR WHILE PROVIDING A MINIMUM 3" CLEARANCE FROM EXISTING PAVEMENT EDGE

PAVEMENT REINFORCEMENT DETAIL



LONGITUDINAL CONSTRUCTION JOINT

PATCHES MORE THAN 20' IN LENGTH SHALL BE TIED TO ADJACENT PAVEMENT, PCC SHOULDERS OR PCC CURB AND GUTTER WITH #6X24" EPOXY COATED TIE BARS AT 36" CENTERS.

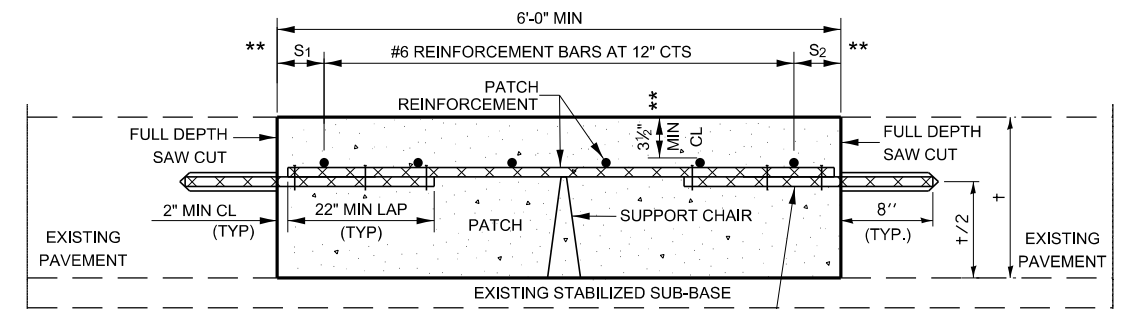
NOTES:

EXISTING LONGITUDINAL REINFORCEMENT SPACING; ±6".

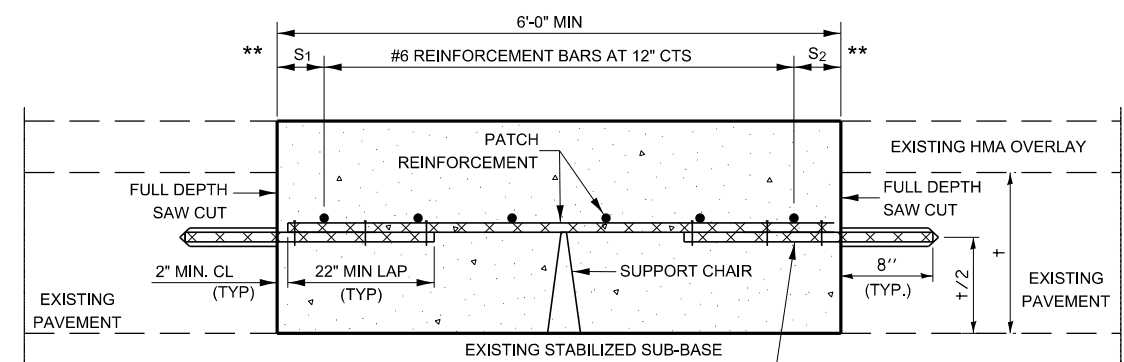
SPACING OF NEW LONGITUDINAL REINFORCEMENT AND NEW LONGITUDINAL TIE BARS SHALL MATCH SPACING OF EXISTING REINFORCEMENT AND SHALL BE TIED TOGETHER WITH A MINIMUM OF TWO TIES PER BAR.

* EVERY THIRD INTERSECTION MUST BE TIED. WHEN THE MINIMUM CLEARANCE CANNOT BE OBTAINED WITH THE TRANSVERSE REBAR ON TOP, THEN THE TRANSVERSE REBAR SHALL BE TIED TO THE BOTTOM OF THE LONGITUDINAL REBAR.

** VARIABLE: WHERE S₁ AND S₂ ARE 2 1/2" MIN. AND 12" MAX.



WITHOUT HMA OVERLAY



WITH HMA OVERLAY

PATCHING DETAIL FOR CLASS A PATCHING (CRC PAVEMENT)

442-2
SHEET 1 OF 2

STATE OF ILLINOIS
DEPARTMENT OF TRANSPORTATION

CLASS A PATCHING DETAILS

SCALE: SHEET OF SHEETS STA. TO STA.

| | | | | |
|---------------------------|---------|--------|--------------|-----------|
| F.A. RTE. | SECTION | COUNTY | TOTAL SHEETS | SHEET NO. |
| | | | | |
| CONTRACT NO. | | | | |
| ILLINOIS FED. AID PROJECT | | | | |

| | | |
|------------------------------|------------|-----------|
| USER NAME = Anthony.Grunstad | DESIGNED - | REVISED - |
| | DRAWN - | REVISED - |
| PLOT SCALE = 100,000 ' / in. | CHECKED - | REVISED - |
| PLOT DATE = 9/27/23 | DATE - | REVISED - |

MODEL det 3 dwt.tbl
FILE Name: pav\illinois\pav\bechtel.com\INDOT\Documents\DOT Office\Druid: 3\Projects\3-Darcy Detail\Revisions 2023\00-199 SURF CSE PAVT REHAB & SHLD.DGN