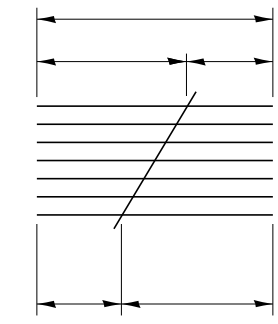


**HALF LONG SECTION**

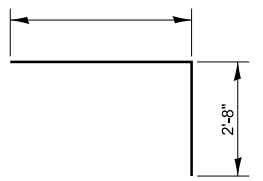
**HALF ELEVATION**

**DIMENSIONS AT RT. ∠'S TO C ROADWAY**

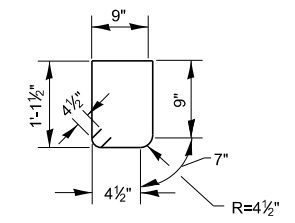


**BAR CUTTING DIAGRAM**

**BARS h & h1**

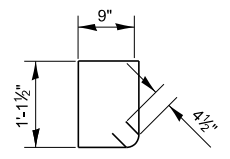


**BAR z**



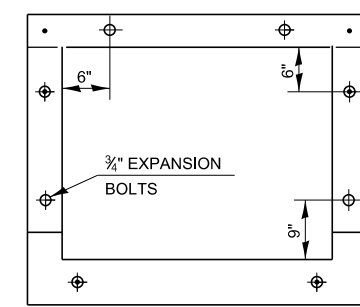
**BAR s**

(UPSTREAM)



**BAR s1**

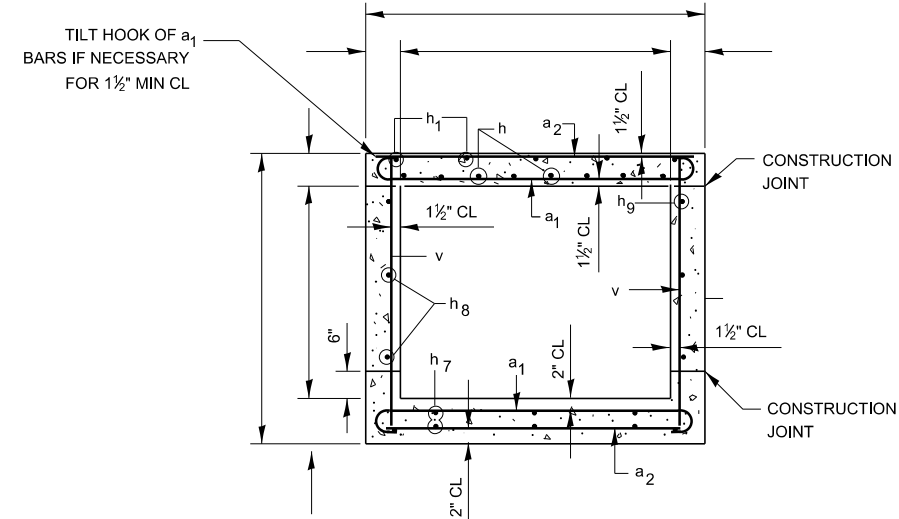
(DOWNSTREAM)



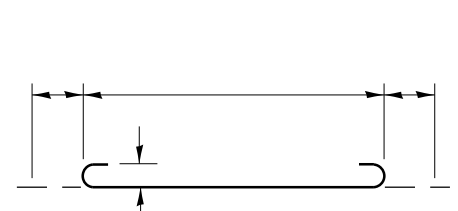
SIDEWALLS @ " CTS  
TOP & BOTTOM @ " CTS

**EXPANSION BOLT LOCATION**

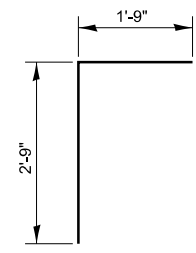
NOTE: EXPANSION BOLTS SHALL CONSIST OF SELF DRILL EXPANSION SHIELDS AND 3/8" DIAMETER HOOKED BOLTS. HOOKED BOLTS SHALL EXTEND A MINIMUM OF 9" INTO NEW CONCRETE. MINIMUM CERTIFIED PROOF LOAD = 4,080 LBS.



**SECTION THRU BARREL**



**BAR a1**



**BAR d**

**BILL OF MATERIAL**

BAR	NO.	SIZE	LENGTH
a1			
a2		#4	
a3			
d			
h			
h1			
h3			
h4			
h5			
h6			
h7			
h8			
h9			
h10		#6	
h11			
s			
s1			
v			
v 1(E)			
v 2(E)			
v 3(E)			
v 4(E)			
v 5(E)			
v 6(E)			
v 7(E)			
v 8(E)			
w		#5	
w1		#5	
z			
CONCRETE			CU YD
BOX CULVERTS			
REINFORCEMENT BARS			LBS
REIN BARS (EPOXY CTD)			LBS
CONCRETE REMOVAL			CU YD
EXPANSION BOLTS			EACH

540-2B

MODEL: det 3 det.tbl  
FILE: \\paw.bentley.com\PROJECTS\DOT\Office\Drawings\3\Projects\Carry Detail\Revisions 2023\500-599 STRUCTURES.dgn

USER NAME = Anthony.Grunstad	DESIGNED -	REVISED -
PLOT SCALE = 100,000 ' / in.	DRAWN -	REVISED -
PLOT DATE = 9/27/23	CHECKED -	REVISED -
	DATE -	REVISED -

**STATE OF ILLINOIS  
DEPARTMENT OF TRANSPORTATION**

**BOX CULVERT EXTENSION STATION**

SCALE: SHEET OF SHEETS STA. TO STA.

F.A. RTE.	SECTION	COUNTY	TOTAL SHEETS	SHEET NO.
CONTRACT NO.				
ILLINOIS FED. AID PROJECT				