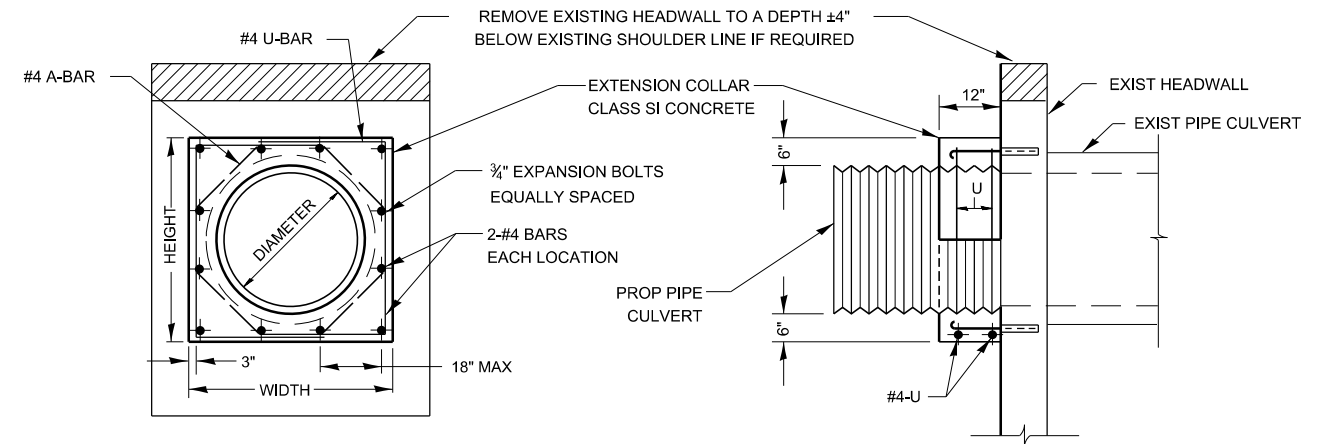
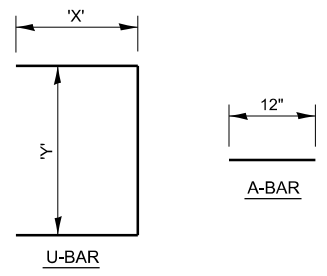


MODEL det 3 details  
 FILE Name: p:\uillscw\benley.com\PIV\DOT\Documents\DOT Offices\DH\dte\_3\Projects-Carcy Details\03\_Detail\_Revision\2023\500-599\_STRUCTURES.dgn



REMOVE EXISTING HEADWALL TO A DEPTH ±4"  
 BELOW EXISTING SHOULDER LINE IF REQUIRED  
 EXTENSION COLLAR  
 CLASS SI CONCRETE  
 3/4" EXPANSION BOLTS  
 EQUALLY SPACED  
 2-#4 BARS  
 EACH LOCATION  
 PROP PIPE  
 CULVERT  
 #4-U  
 EXIST HEADWALL  
 EXIST PIPE CULVERT  
 12"  
 6"  
 6"  
 18" MAX  
 3"  
 WIDTH  
 HEIGHT  
 DIAMETER

EXPANSION BOLTS SHALL CONSIST OF SELF DRILLING EXPANSION SHIELDS  
 AND 3/4" DIA HOOKED BOLTS. HOOKED BOLTS SHALL EXTEND A MINIMUM  
 OF 9" INTO NEW CONCRETE.  
 MINIMUM CERTIFIED PROOF LOAD = 4,080 LBS



LOCATION	EXISTING CULVERT SIZE	PIPE DIMENSION	PIPE AREA	EXTENSION COLLAR		A-BAR			U-BAR			QUANTITIES ARE FOR ONE SIDE ONLY						
				WIDTH IN	HEIGHT IN	12 IN	'X' IN	'Y' IN	CLASS SI CONC COLLAR	REINFORCEMENT BARS	3/4" DIA EXPANSION BOLTS	CU YD	POUND	EACH				
	DIA IN	DIA IN	SQ FT															

**COLLAR DETAILS (CMP EXTENSION OF PIPE CULVERT)**

USER NAME = Anthony.Grunstad	DESIGNED -	REVISED -
	DRAWN -	REVISED -
PLOT SCALE = 100,000 ' / in.	CHECKED -	REVISED -
PLOT DATE = 9/27/23	DATE -	REVISED -

**STATE OF ILLINOIS**  
**DEPARTMENT OF TRANSPORTATION**

SCALE:	SHEET	OF	SHEETS	STA.	TO	STA.
--------	-------	----	--------	------	----	------

F.A. RTE.	SECTION	COUNTY	TOTAL SHEETS	SHEET NO.
CONTRACT NO.				
ILLINOIS FED. AID PROJECT				