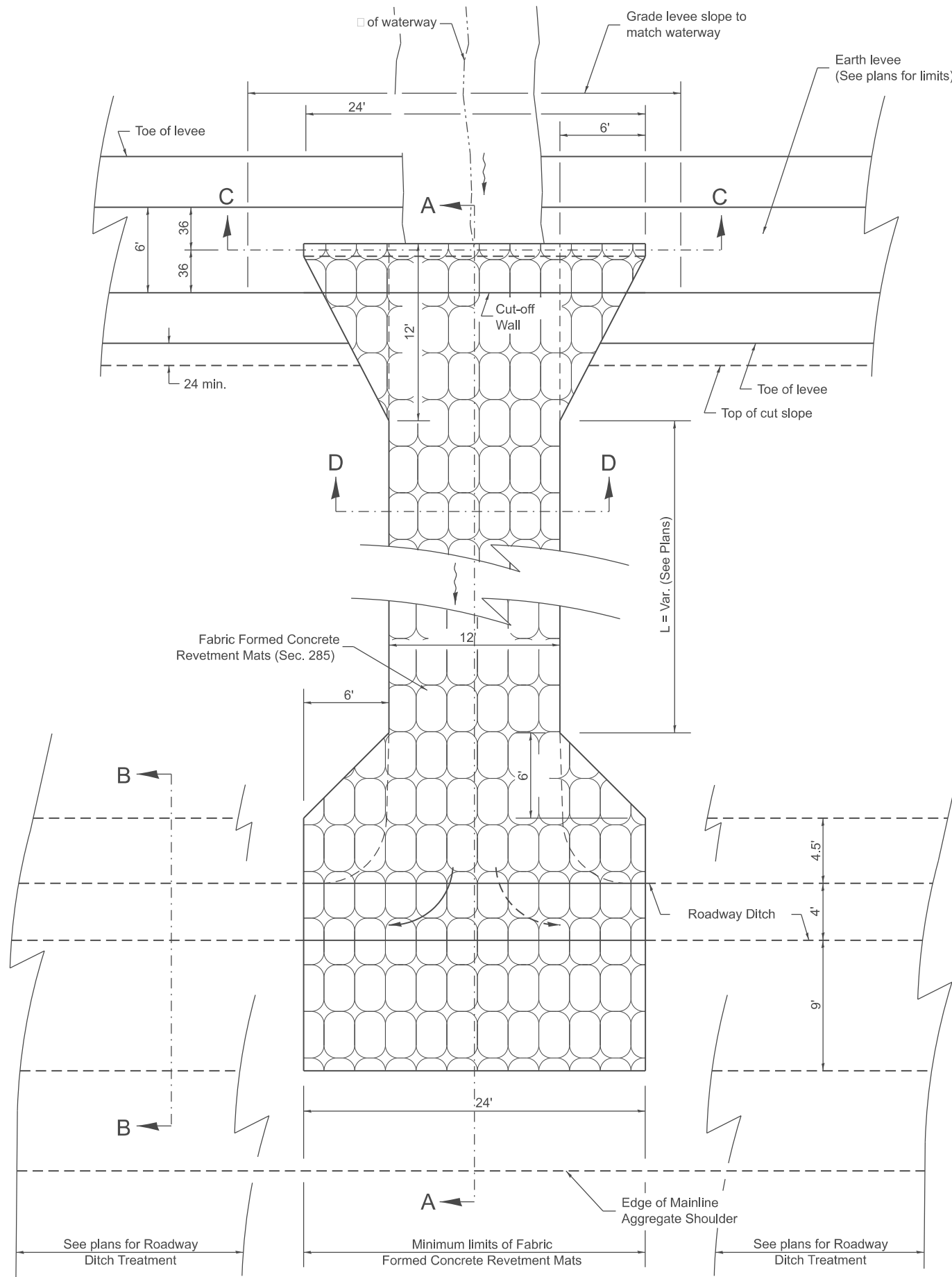
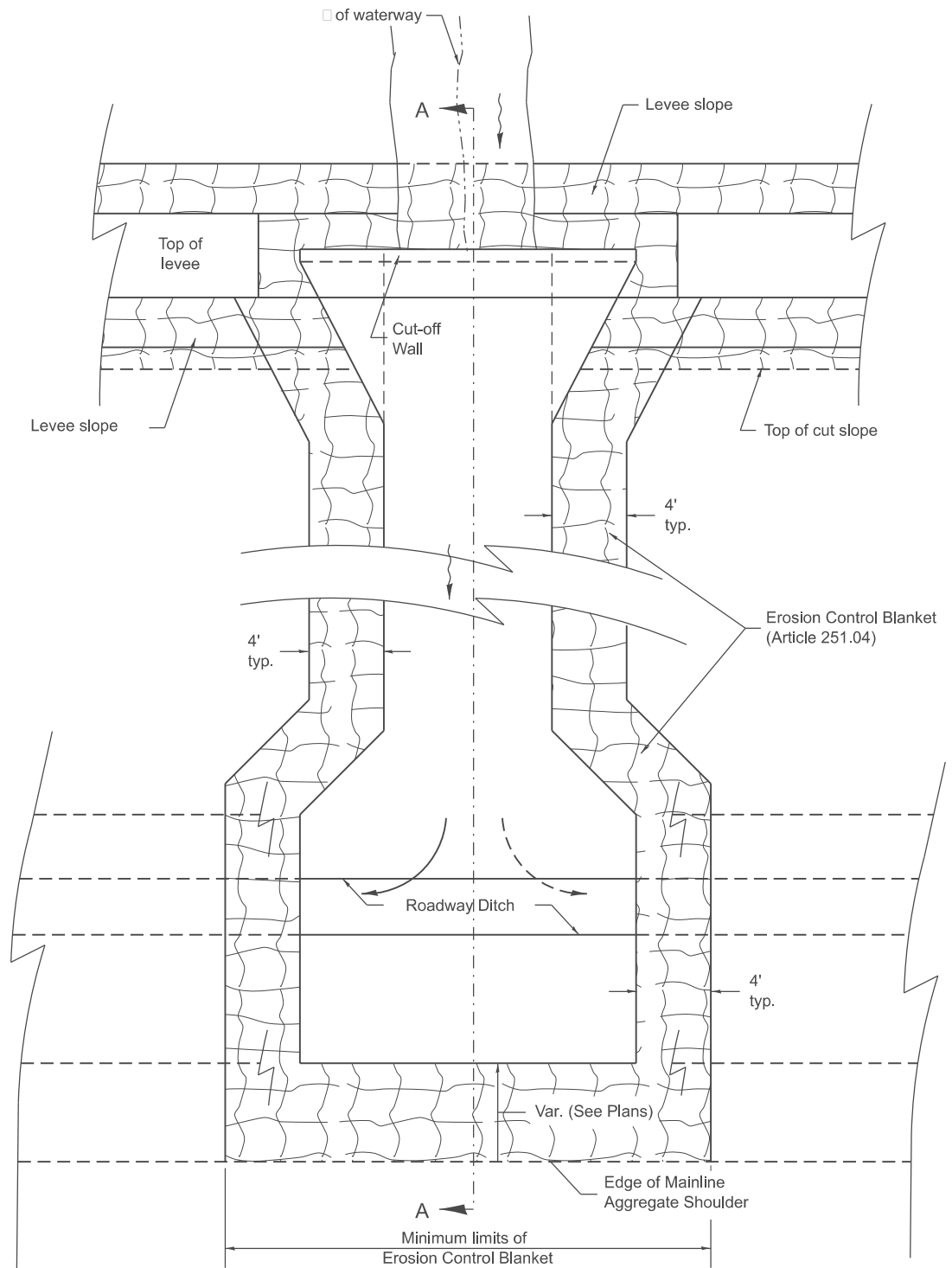


Designer Notes:  
 1. Designer to modify this Special Detail sheet, as needed, for inclusion in plans.  
 2. Include District CADD Detail for Fabric Formed Concrete Revetment Mats.

MODEL: SHT\_PLAN  
 FILE NAME: C:\Bentley\CONNECT101\Organization\ChilIDOT\_Standards\CallIDOT\_Sheets.cad



PLAN



EROSION CONTROL BLANKET DETAILS

General Notes:

1. Fabric Formed Concrete Revetment Mats shall conform to SECTION 285.
2. Erosion Control Blanket shall conform to Article 251.04.

All dimensions are in inches unless otherwise noted.

USER NAME = Eric.Thomas	DESIGNED -	REVISED -
	DRAWN -	REVISED -
	CHECKED -	REVISED -
PLOT DATE = 12/7/2022	DATE -	REVISED -

STATE OF ILLINOIS  
 DEPARTMENT OF TRANSPORTATION

WATERWAY EROSION CONTROL, UPSTREAM TREATMENT,  
 FABRIC FORMED CONCRETE REVETMENT MATS

SCALE: NOT TO SCALE SHEET 1 OF 2 SHEETS STA. TO STA.

F.A. RTE.	SECTION	COUNTY	TOTAL SHEETS	SHEET NO.
DISTRICT 4 DETAIL NO. 285101		CONTRACT NO.		
ILLINOIS FED. AID PROJECT				