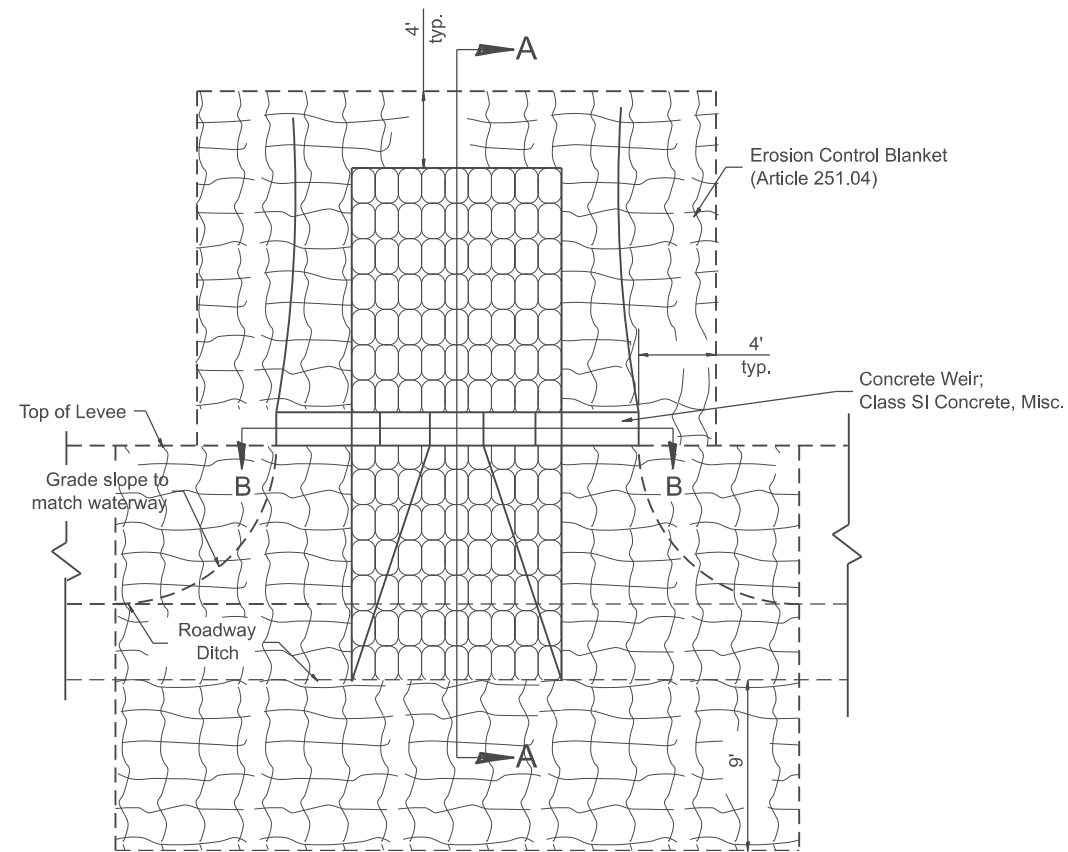
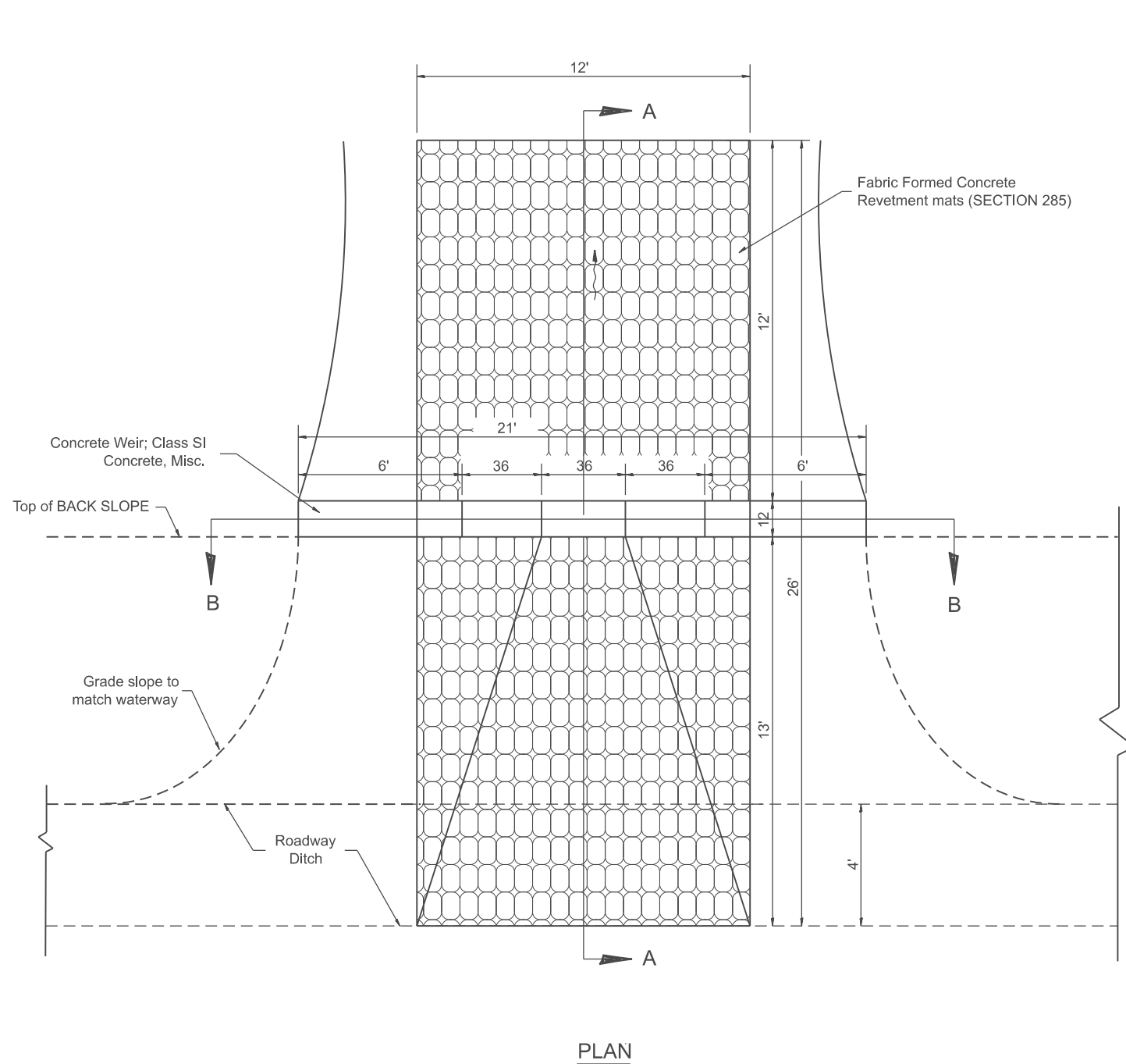


Designer Notes:

1. Designer to modify this Special Detail sheet, as needed, for inclusion in plans.
2. This treatment is recommended for small waterways; < 30' in width.
3. Include District CADD Detail for Fabric Formed Concrete Revetment mats.
4. Designer to add Drainage Structure Details as needed. The CULVERT flowline should be located such that CULVERT siltation is minimized.

MODEL: SHT_PLAN
FILE NAME: C:\Bentley\CONNECT10110\Organization\Chil\IDOT_Standards\Civil\IDOT_Sheets.dwg



GENERAL NOTES

1. Fabric Formed Concrete Revetment Mats shall conform to Section 285.
2. Erosion Control Blanket shall conform to Article 251.04.
3. Class SI Concrete shall conform to Section 503.

All dimensions are in inches unless otherwise noted.

USER NAME = Eric.Thomas	DESIGNED -	REVISED -
	DRAWN -	REVISED -
	CHECKED -	REVISED -
PLOT DATE = 12/7/2022	DATE -	REVISED -

**STATE OF ILLINOIS
DEPARTMENT OF TRANSPORTATION**

**WATERWAY EROSION CONTROL,
DOWNSTREAM TREATMENT, CONCRETE WEIR**

SCALE: NOT TO SCALE SHEET 1 OF 2 SHEETS STA. TO STA.

F.A. RTE.	SECTION	COUNTY	TOTAL SHEETS	SHEET NO.
DISTRICT 4 DETAIL NO. 285116		CONTRACT NO.		
ILLINOIS FED. AID PROJECT				