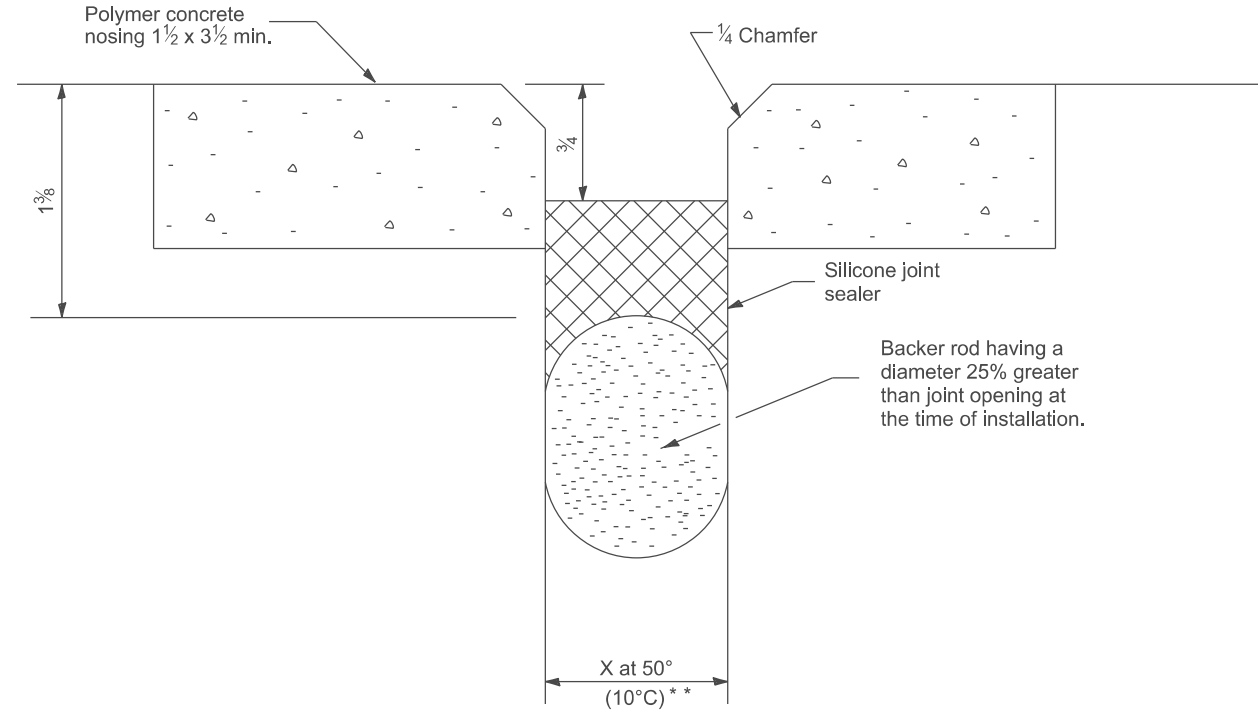
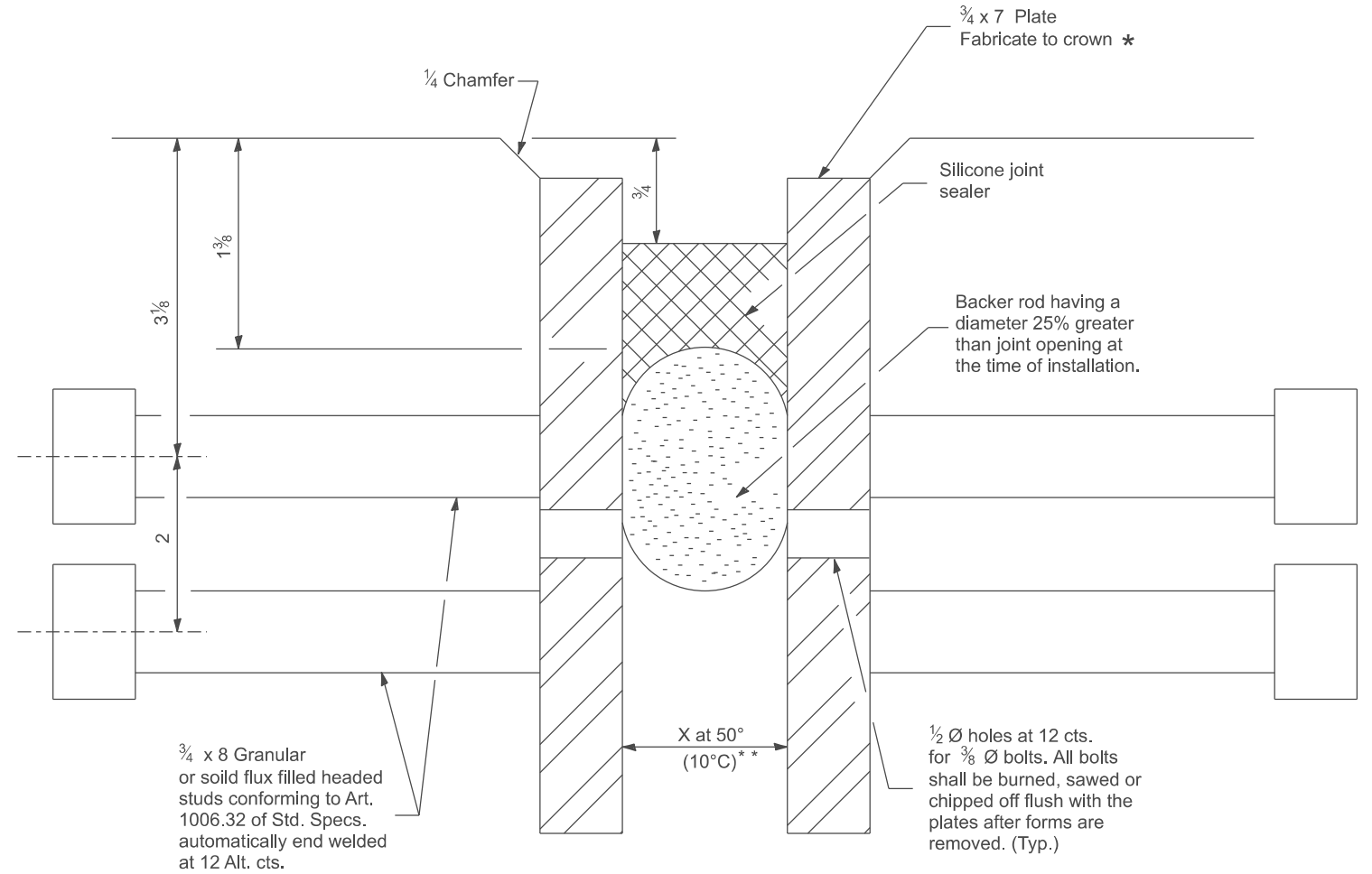


DESIGNER NOTES: CHECK GBSP
 1. Include Special Provision's for Silicone Bridge Joint Sealer and Recurring Special (Check Sht. 17) 'Polymer Concrete' (If using Concrete Detail).

MODEL: SHT_PLAN
 FILE NAME: C:\Bentley\CONNECT101\Organizer\Chil\DOT_Standards\Call\DOT_Sheets.dwg



**SILICONE JOINT SEAL
(CONCRETE DETAILS)**



- * Furnish in segments of 20' maximum length. Maximum space between installed segments shall be 1/4. Seal space with Silicone Sealant suitable for Structural Steel.
- ** See Silicone Joint Seal Design Chart for Joint Opening (X).

**SILICONE JOINT SEAL
(STEEL DETAILS)**

SILICONE JOINT SEAL DESIGN CHART			
Joint Opening at 50° F. (10° C)		Length Contributing to Expansion	
inch	mm	feet	meter
1	25	0 - 40	0 - 12
1 1/2	38	40 - 80	12 - 24
2	51	80 - 120	24 - 37
2 1/2	64	120 - 160	37 - 49

All dimensions are in inches unless otherwise noted.

USER NAME = Eric.Thomas	DESIGNED -	REVISED -
	DRAWN -	REVISED -
	CHECKED -	REVISED -
PLOT DATE = 12/7/2022	DATE -	REVISED -

**STATE OF ILLINOIS
DEPARTMENT OF TRANSPORTATION**

SILICONE JOINT SEAL

SCALE: NOT TO SCALE SHEET OF SHEETS STA. TO STA.

F.A. RTE.	SECTION	COUNTY	TOTAL SHEETS	SHEET NO.
DISTRICT 4 DETAIL NO. 503301		CONTRACT NO.		
ILLINOIS FED. AID PROJECT				