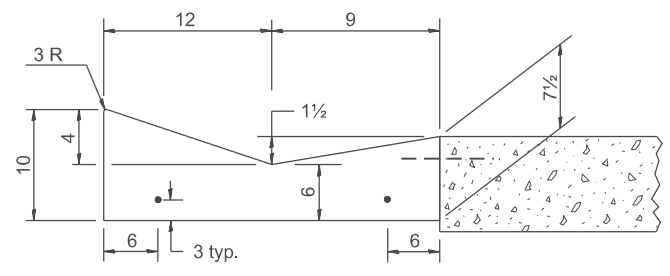


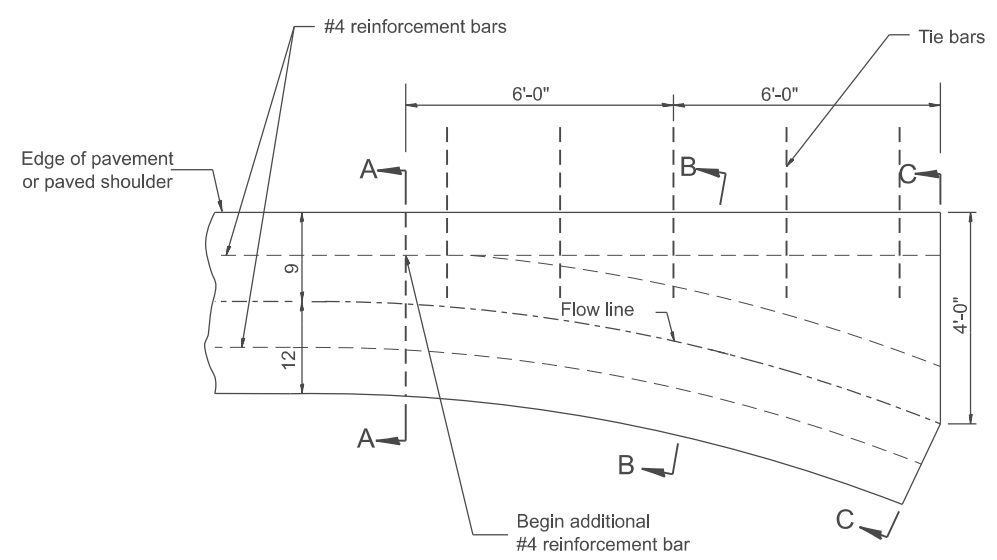
SHOULDER EDGE GUTTER

PAVEMENT EDGE GUTTER

CONCRETE GUTTER, TYPE B, (SPECIAL)



SECTION A-A

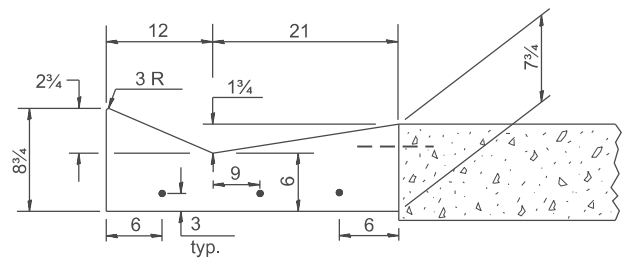


PLAN

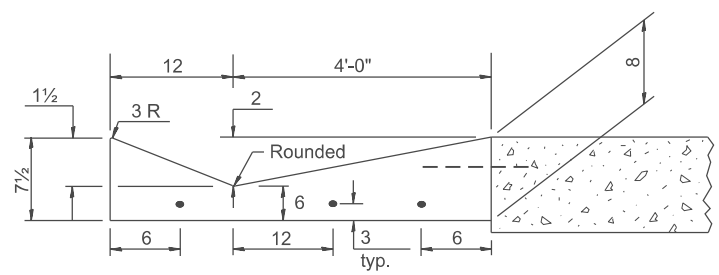
QUANTITY
Section C-C to A-A=
0.73 cu. yd. concrete.

GENERAL NOTES:

1. CONCRETE GUTTER, TYPE B (SPECIAL) shall conform to the applicable portions of Section 606.
2. Tie bars shall be No. 6x24 at 36" centers unless otherwise shown.
3. Gutter, gutter inlets, gutter outlets, and gutter entrances shall be tied to rigid pavement in accordance with details shown on Standard 420001.
4. Joints shall be constructed in accordance with Article 606.06.
5. Welded wire fabric shall conform to Article 1006.10(c)(1), and shall not be less than 58 lbs/100 sq.ft.



SECTION B-B



SECTION C-C

INLET

DESIGNER NOTES:
1. INCLUDE STATE std. 420001.
MODEL: SHT_PLAN
FILE NAME: C:\Bentley\CONNECT101\Organization\Chil\IDOT_Standards\Civil\IDOT_Sheets.dwg

QUANTITIES	
CALC. BY:	DATE:
CHECKED BY:	DATE:
QUANTITY CALCULATIONS ARE ON FILE AT THE DISTRICT 4 OFFICE; BUREAU OF PROJECT IMPLEMENTATION; DOCUMENTATION SECTION	

USER NAME = Eric.Thomas	DESIGNED -	REVISED -
	DRAWN -	REVISED -
	CHECKED -	REVISED -
PLOT DATE = 12/7/2022	DATE -	REVISED -

STATE OF ILLINOIS
DEPARTMENT OF TRANSPORTATION

**CONCRETE GUTTER, TYPE B, (SPECIAL)
(INLET, OUTLET & ENTRANCE)**

SCALE: NOT TO SCALE SHEET 1 OF 3 SHEETS STA. TO STA.

All dimensions are in inches unless otherwise noted.

F.A. RTE.	SECTION	COUNTY	TOTAL SHEETS	SHEET NO.
DISTRICT 4 DETAIL NO. 606201			CONTRACT NO.	
ILLINOIS FED. AID PROJECT				