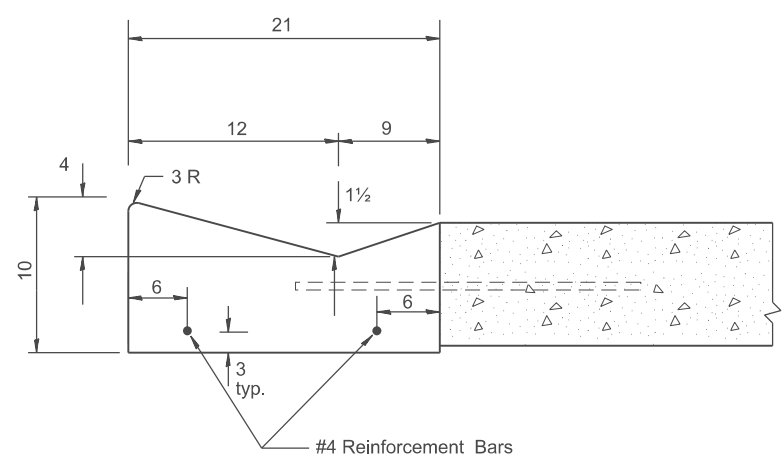
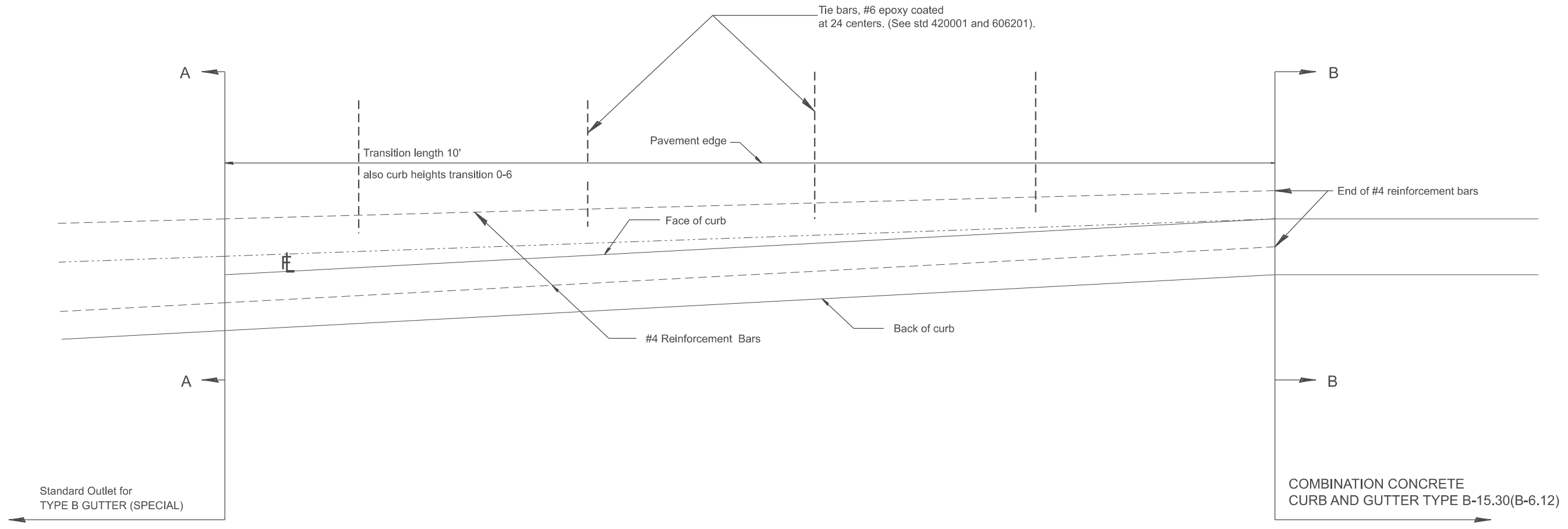
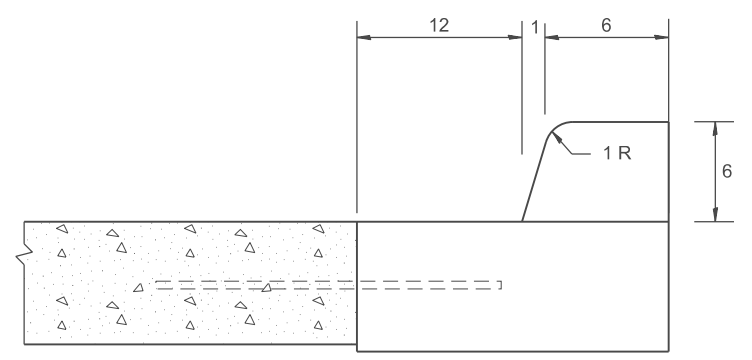


Designer Notes: 1. Use in conjunction with CAD DRAWING for Standard outlet for CONCRETE GUTTER, TYPE B, (SPECIAL)
 2. Include std 420001.
 3. Pay item for Transitions is 60603200, CONCRETE GUTTER TRANSITION (SPECIAL)

MODEL: D4-606206
 FILE NAME: c:\pwwork\project\illinois.gov\thomas.cox\110823\110823-0606206.dgn



SECTION A - A



SECTION B - B

GENERAL NOTES:

1. Tie bars shall be constructed in accordance with details for BULKHEAD LONGITUDINAL CONSTRUCTION JOINT shown on Standard 420001.
2. Adjacent to sound existing p.c.c. pavement, tie bars shall installed in drilled holes in accordance with article 420.10(b).
3. Construction and expansion joints shall be installed in prolongation with joints in the pavement. Joint shall be constructed in accordance with the applicable portion of Art. 606.06 of the Standard Specifications.

All dimensions are in inches unless otherwise noted.

USER NAME = thomas.cox	DESIGNED -	REVISED -
	DRAWN -	REVISED -
	CHECKED -	REVISED -
PLOT DATE = 11/11/2024	DATE -	REVISED -

STATE OF ILLINOIS
 DEPARTMENT OF TRANSPORTATION

TRANSITION FROM CONCRETE CURB AND GUTTER TYPE B-6.12
 TO OUTLET FOR TYPE B GUTTER (SPECIAL)

SCALE: NOT TO SCALE SHEET 000 OF SHEETS STA. TO STA.

F.A. RTE.	SECTION	COUNTY	TOTAL SHEETS	SHEET NO.
				0
DISTRICT 4 DETAIL NO. 606206		CONTRACT NO.		
ILLINOIS FED. AID PROJECT				