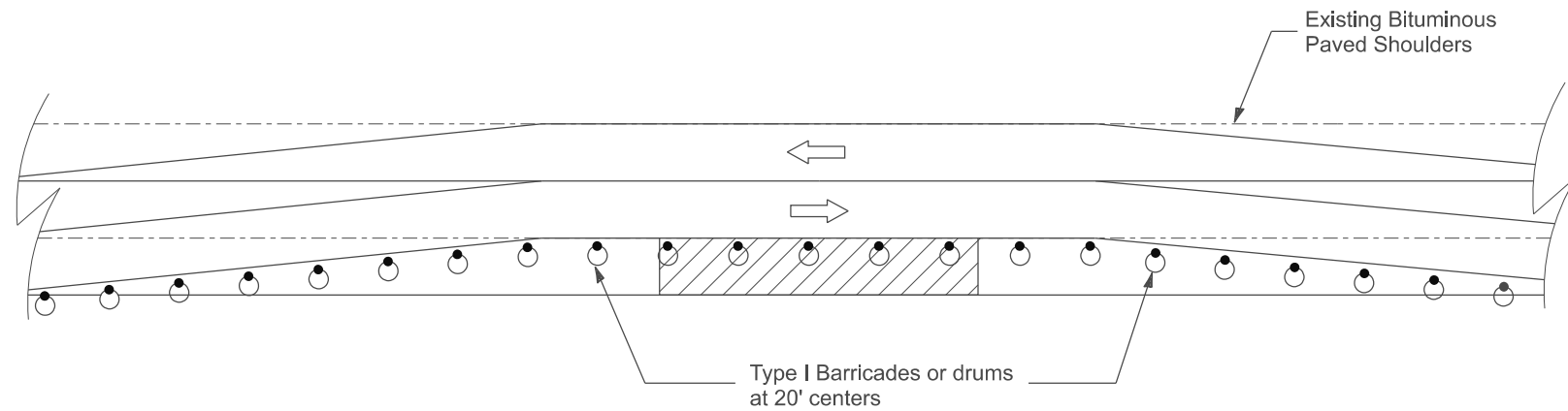
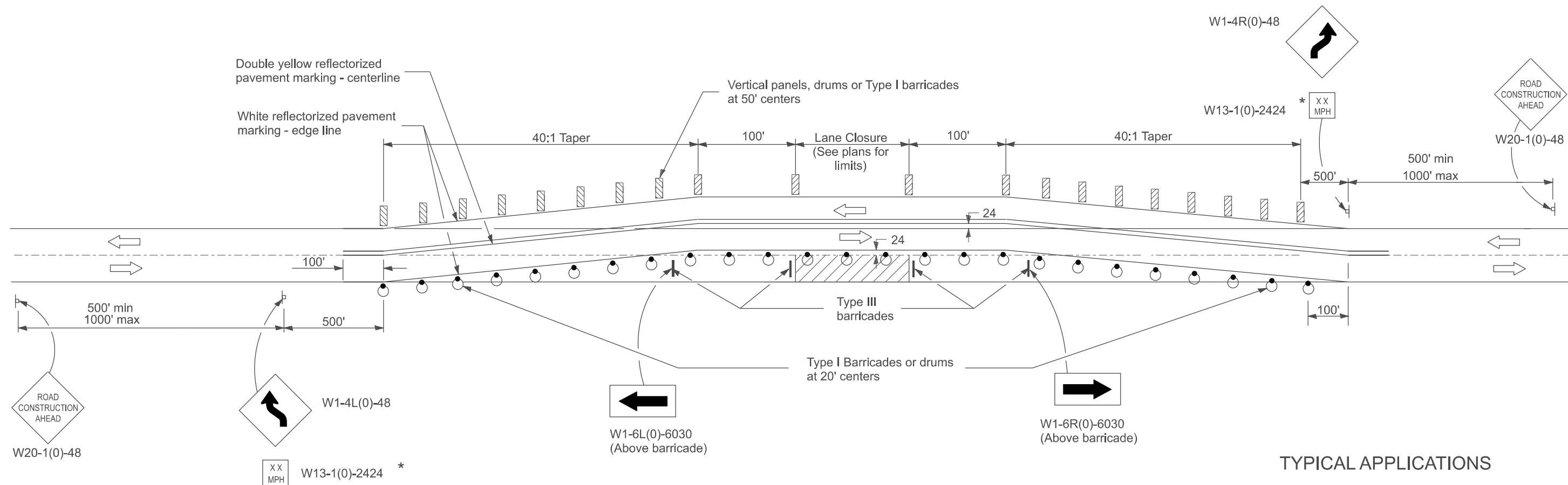


DESIGNER NOTES:

1. Include State Standard 701331.
2. Review treatments with District Traffic Control Engineer (Technician).
3. Include District Special Provision.

MODEL: SHT_PLAN
FILE NAME: C:\Bentley\CONNECT10110\paw\station\chm\DOT_Standards\701331_Spec.dwg



OPTIONAL TREATMENT WITH EXISTING HMA PAVED SHOULDERS

SYMBOLS

- Work area
- Sign
- Barricade or drum with monodirectional steady burning light
- Vertical panel, drum or Type I barricade
- Type III barricade

TYPICAL APPLICATIONS

1. Connection of relocated pavements to existing pavements.
2. Emergency pavement repairs.

GENERAL NOTES

1. This Standard is used where at any time, any vehicle, equipment, workers or their activities require the closure of a single lane and a temporary run-around is constructed adjacent to the existing pavement.
- *2. The advisory speed to be shown below the reverse curve (turn) signs shall be determined at the site and approved by the Engineer.
3. Type III reflectorized pavement marking tape shall be used for marking the edge lines and centerline on the existing pavement. Type III reflectorized pavement marking tape shall also be used for markings on the paved run-arounds. Type III reflectorized pavement marking tape will be paid for in accordance with Article 703.07 of the Standard Specifications

All dimensions are in inches unless otherwise noted.

USER NAME = Eric.Thomas	DESIGNED -	REVISED -
	DRAWN -	REVISED -
	CHECKED -	REVISED -
PLOT DATE = 12/7/2022	DATE -	REVISED -

**STATE OF ILLINOIS
DEPARTMENT OF TRANSPORTATION**

LANE CLOSURE, 2L, 2W WITH RUNAROUND ADJACENT TO EXISTING PAVEMENT FOR SPEEDS ≥45MPH (STANDARD 701331, SPECIAL)			
SCALE: NOT TO SCALE	SHEET	OF SHEETS	STA. TO STA.

F.A. RTE.	SECTION	COUNTY	TOTAL SHEETS	SHEET NO.
DISTRICT 4 DETAIL NO. 701331		CONTRACT NO.		
ILLINOIS		FED. AID PROJECT		