

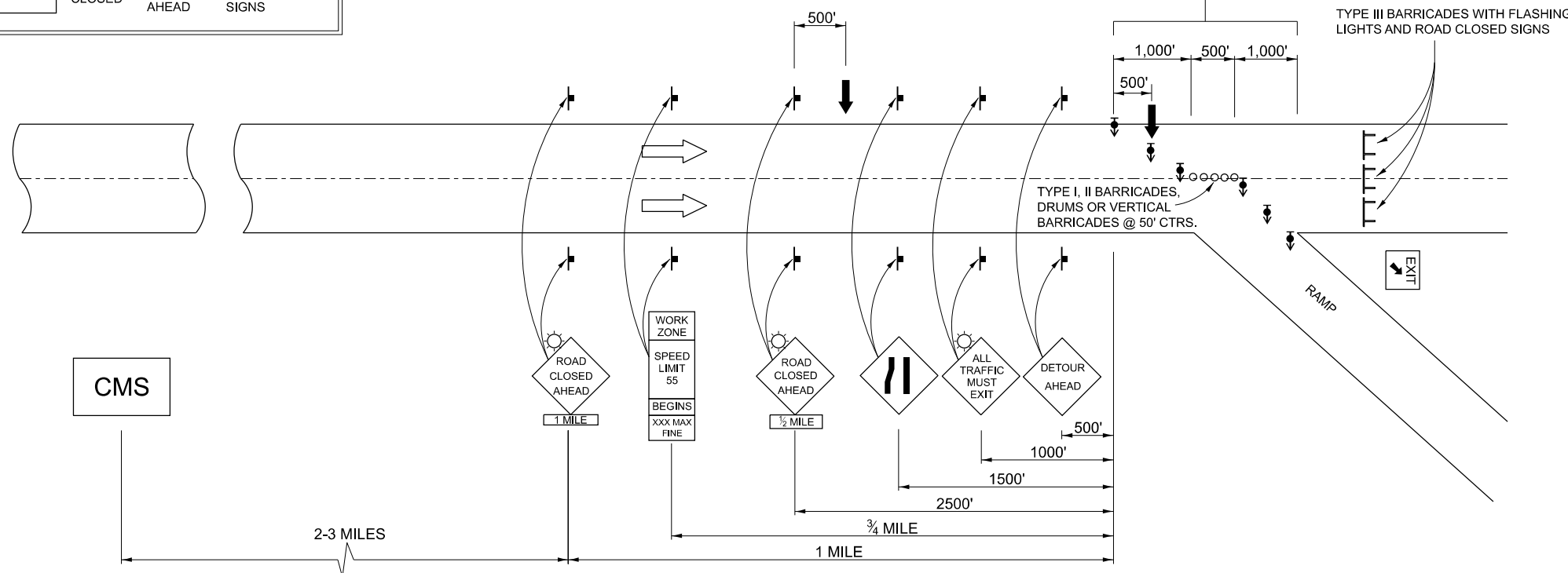
# INTERSTATE DETOUR USING ENTRANCE AND EXIT RAMP

A CHANGEABLE MESSAGE SIGN SHALL BE USED IN ADVANCE OF SIGNING TO WARN OF CLOSURE

**CMS** ROAD CLOSED 2-3 MILES AHEAD FOLLOW DETOUR SIGNS

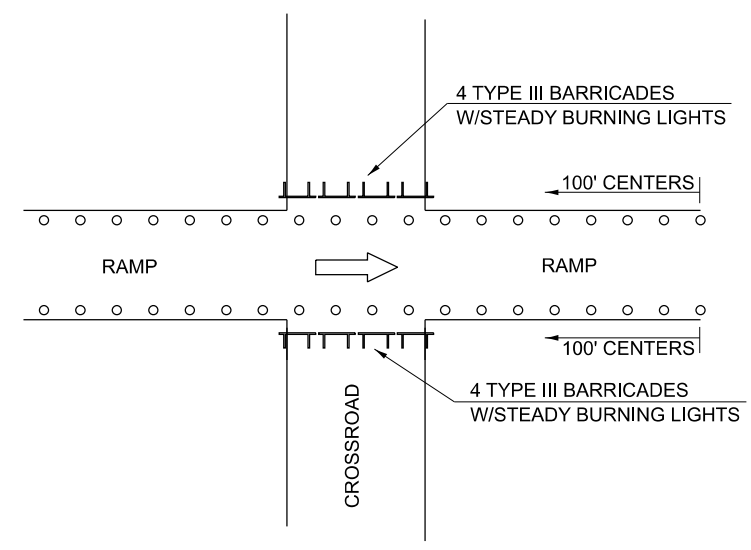
DIRECTIONAL BARRICADES WITH STEADY BURNING LIGHTS AT 50' (15 m) CTS. IN TAPER. DRUMS WITH STEADY BURNING LIGHTS IN TANGENT (BETWEEN TAPERS) AT 100' (30 m) CTS.

FOR OFF PEAK CLOSURES LESS THAN 24 HOURS, THE TANGENT SECTION MAY BE OMITTED BY APPROVAL OF THE ENGINEER.

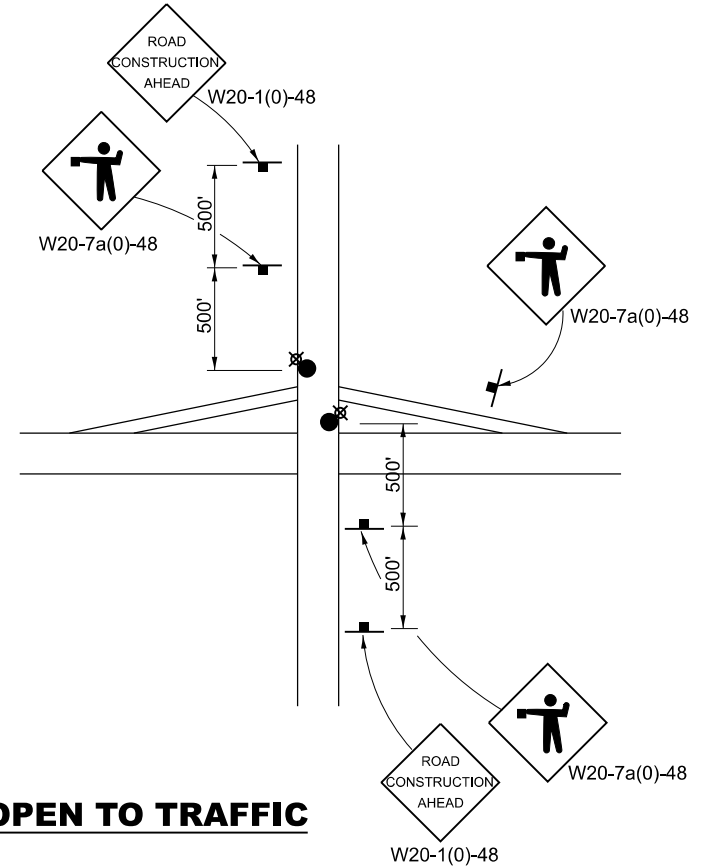


SYMBOLS	
	ARROW BOARD
	SIGN
	DRUM W/STEADY BURNING LIGHT
	TYPE III BARRICADE
	DIRECTIONAL BARRICADE W/STEADY BURNING LIGHT
	LIGHTED FLAGGER STATIONS

**CMS**



## CROSSROAD CLOSED TO TRAFFIC



## CROSSROAD OPEN TO TRAFFIC

Note: All dimensions are in INCHES (millimeters) unless otherwise shown.

### DISTRICT 5 DETAIL NO. X7011005

MODEL: X7011005  
FILE NAME: c:\pwworking\autocad\cadd\0872377\05\###\Sh-Detail\_X7011005.dgn

USER NAME = Bridgette.Pierson	DESIGNED -	REVISED - 12/06
	DRAWN -	REVISED - 01/10
PLOT SCALE = \$\$SCALE\$	CHECKED -	REVISED -
PLOT DATE = 4/26/2024	DATE -	REVISED -

STATE OF ILLINOIS  
DEPARTMENT OF TRANSPORTATION

### TRAFFIC CONTROL AND PROTECTION FOR TEMPORARY DETOUR

SCALE: SHEET 1 OF 1 SHEETS STA. TO STA.

F.A. RTE.	SECTION	COUNTY	TOTAL SHEETS	SHEET NO.
CONTRACT NO.				
ILLINOIS FED. AID PROJECT				